



Worldwide Occurrence of Integrative Conjugative Element Encoding Multidrug Resistance Determinants in Epidemic *Vibrio cholerae* O1

Michel A. Marin*, Erica L. Fonseca, Bruno N. Andrade, Adriana C. Cabral, Ana Carolina P. Vicente

Laboratory of Molecular Genetics of Microorganisms, Oswaldo Cruz Institute (IOC) - Oswaldo Cruz Foundation (FIOCRUZ), Rio de Janeiro, Brazil

Abstract

In the last decades, there has been an increase of cholera epidemics caused by multidrug resistant strains. Particularly, the integrative and conjugative element (ICE) seems to play a major role in the emergence of multidrug resistant *Vibrio cholerae*. This study fully characterized, by whole genome sequencing, new ICEs carried by multidrug resistant *V. cholerae* O1 strains from Nigeria (2010) (ICEVchNig1) and Nepal (1994) (ICEVchNep1). The gene content and gene order of these two ICEs are the same, and identical to ICEVchInd5, ICEVchBan5 and ICEVchHai1 previously identified in multidrug resistant *V. cholerae* O1. This ICE is characterized by *dfrA1*, *sul2*, *strAB* and *floR* antimicrobial resistance genes, and by unique gene content in HS4 and HS5 ICE regions. Screening for ICEs, in publicly available *V. cholerae* genomes, revealed the occurrence and widespread distribution of this ICE among *V. cholerae* O1. Metagenomic analysis found segments of this ICE in marine environments far from the direct influence of the cholera epidemic. Therefore, this study revealed the epidemiology of a spatio-temporal prevalent ICE in *V. cholerae* O1. Its occurrence and dispersion in *V. cholerae* O1 strains from different continents throughout more than two decades can be indicative of its role in the fitness of the current pandemic lineage.

Citation: Marin MA, Fonseca EL, Andrade BN, Cabral AC, Vicente ACP (2014) Worldwide Occurrence of Integrative Conjugative Element Encoding Multidrug Resistance Determinants in Epidemic *Vibrio cholerae* O1. PLoS ONE 9(9): e108728. doi:10.1371/journal.pone.0108728

Editor: Axel Cloeckert, Institut National de la Recherche Agronomique, France

Received: July 14, 2014; **Accepted:** September 2, 2014; **Published:** September 29, 2014

Copyright: © 2014 Marin et al. This is an open-access article distributed under the terms of the Creative Commons Attribution License, which permits unrestricted use, distribution, and reproduction in any medium, provided the original author and source are credited.

Data Availability: The authors confirm that all data underlying the findings are fully available without restriction. All relevant data are within the paper and its Supporting Information files.

Funding: This work was supported by Instituto Oswaldo Cruz grant (PROEP), FAPERJ, CAPES, CAPES-PNPD, CNPq and FIOCRUZ fellowships. The funders had no role in study design, data collection and analysis, decision to publish, or preparation of the manuscript.

Competing Interests: The authors have declared that no competing interests exist.

* Email: mfabanto@ioc.fiocruz.br

Background

The burden of cholera has grown strikingly during the last years, and has spread to countries previously spared of this disease. An increasing number of multidrug resistant *Vibrio cholerae* strains have been reported in recent cholera outbreaks [1], and this resistance phenotype is mainly associated with the presence of mobile and mobilized elements, such as integrative and conjugative elements (ICEs). ICEs are self-transmissible mobile elements, able to integrate into the host bacterial chromosome, excise and transfer to a new host genome through conjugation [2]. To date, a dozen related ICEs belonging to the SXT/R391 family have been identified, which are characterized by a SXT integrase gene (*int_{SXT}*) that enables site-specific integration of the ICE into the 5' end of *pfC* gene. There are 52 core genes present in all SXT/R391 ICEs required for integration/excision, conjugative transfer, regulation, as well as many genes of unknown function. There are five regions considered hotspots (HS) for insertion of foreign DNA that afford specific characteristics to the bacterial host [3][4][5]. The HS content is variable but some ICEs occasionally share these contents. Additional variable DNA inserts (named variable regions) outside the HS are also present [5]. Differences in the HS and variable regions are responsible for ICE size variation, but mainly for specific traits, such as antimicrobial resistance [5] and fitness [6], that characterize the distinct SXT/R391 ICEs.

According to Mutreja et al [7], the 7th cholera pandemic spread from the Bay of Bengal in three independent waves of global transmission, in which waves 2 and 3 were characterized by the acquisition of SXT/R391 ICEs.

The *V. cholerae* O1 lineage, responsible for the Haitian cholera epidemic in 2010, harbored an ICE (ICEVchHai1) characterized by the antimicrobial resistance genes *dfrA1* (trimethoprim), *sul2* (sulfamethoxazole), *strAB* (streptomycin) and *floR* (chloramphenicol) [8]. *V. cholerae* O1 strains harboring ICEs with this same set of antimicrobial resistance genes have also been reported in India (ICEVchInd5, 1994–2005) [9][5] and Bangladesh (ICEVchBan5, 1998) [5].

Here, we fully characterized, by whole genome sequencing, new ICEs carried by multidrug resistant *V. cholerae* O1 strains from Nigeria (2010) (ICEVchNig1) and Nepal (1994) (ICEVchNep1). It was demonstrated that these two ICEs shared the same gene content and gene order with ICEs (ICEVchInd5, ICEVchBan5, ICEVchHai1) previously found in a set of multidrug resistant *V. cholerae* O1 strains isolated in different countries throughout more than two decades. These elements corresponded to a single ICE type, named here group 1, characterized by *dfrA1*, *sul2*, *strAB* and *floR* antimicrobial resistance genes, and by unique gene content in HS4 and HS5 regions. Segments of this ICE were found in marine metagenome datasets. Therefore, here, we compiled their genomic information, revealing the real scenario

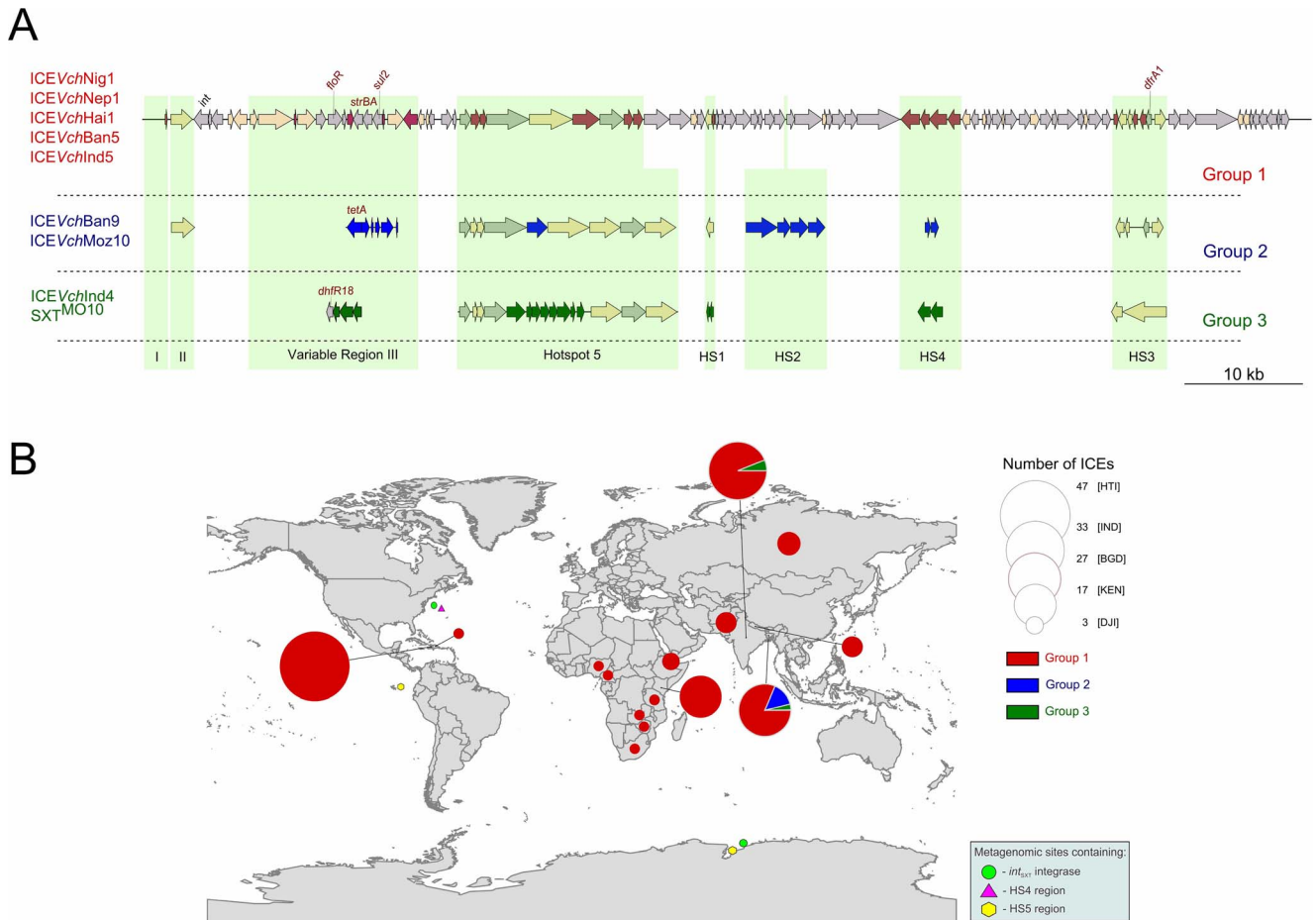


Figure 1. Structure and worldwide distribution of Integrative and Conjugative Elements (ICEs) in epidemic *V. cholerae* strains. (A) The upper line represents the genetic organization of the 2010 Nigeria *V. cholerae* O1 ICE (Group 1). Regions of variability among previously sequenced ICEs (variable regions), and previously identified hotspots of homologous recombination (HS1–HS5) are indicated in light green shading. The core and dispensable genes are indicated by gray and cream arrows, respectively. Unique genes of type 1, 2 and 3 groups are indicated in red, blue and green arrows, respectively. Genes associated with antimicrobial drug resistance *floR* (chloramphenicol), *strAB* (streptomycin), *sul2* (sulfamethoxazole), and *dfrA1/dhfr18* (trimethoprim) are written in red. The ICE group 1 have the same structure and gene content in ICEVchInd5, ICEVchBan5, ICEVchNig1 and ICEVchNep1; similar occurs with group 2 (including ICEVchBan9 and ICEVchMoz10), and group 3 (including ICEVchInd4 and SXT^{MO10}) have the same gene content and structure. (B) Spatial distribution of ICEs siblings found in epidemic *V. cholerae*. The circles are proportional to abundance found in epidemic *V. cholerae* genomes and the colors are accord to ICE group. The metagenome sites where were obtained BLAST hits are depicted.

doi:10.1371/journal.pone.0108728.g001

of this ICE group distribution, and proposed that HS4 and HS5 regions would be useful to trace the group 1 ICE.

Results and Discussion

Using whole genome sequencing, ICEs were identified and characterized in multidrug-resistant *V. cholerae* O1 clinical strains from Nigeria (2010) and Nepal (1994). Surprisingly, comparing their entire genomic content and structure, we concluded that they are siblings of ICEVchHai1, ICEVchInd5 and ICEVchBan5, which were previously identified and characterized in multidrug-resistant strains causing outbreaks/epidemics in Haiti [8][10], India [9] and Bangladesh [5], respectively. Moreover, searches in publicly available *V. cholerae* genomes revealed the widespread presence of this sibling ICE in strains from cholera outbreaks/epidemics in three continents over a period of more than two decades. We also identified *int*_{SXT}, HS4 and HS5 sequences, belonging to these ICEs, in marine metagenome datasets.

ICEs characterization

Thirteen multidrug-resistant strains from cholera outbreaks in Nigeria (n = 12, 2009–2010) and a strain from Nepal (n = 1, 1994) were identified harboring ICEs (Table S1). *V. cholerae* O1 strains from Nigeria (n = 12, 2009–2010) and Nepal (n = 1, 1994) showed susceptibility to tetracycline (MIC 1 mg/L) and florfenicol (MIC ≤ 8 mg/L), reduced susceptibility to chloramphenicol (MIC 6–8 mg/L), and resistance to both streptomycin (MIC > 1024 mg/L) and trimethoprim/sulfamethoxazole (MIC > 32 mg/L), which represents an increased resistance profile compared with early seventh-pandemic isolates and resembles a resistance phenotype encoded by some ICEs, such as the one harbored by epidemic *V. cholerae* O1 lineage from Haiti [8][11]. These resistant strains carried the *int*_{SXT} gene, indicating the presence of an ICE. Class 1 and class 2 integrons were not found in the strains carrying ICE and mutations in *gyrA* and *parC*, associated with resistance to quinolones, have been previously observed only in the strains from Nigeria [12].

Table 1. Groups of integrative and conjugative elements with similar gene content found in epidemic *V. cholerae* O1.

ICE name	Host strain	Country and year of isolation	Resistance profile	Accession	References
Group 1					
ICEVchNig1	VC833, O1	Nigeria, 2010	<i>floR, strAB, sul2, dfrA1</i>	KC886258	This study
ICEVchNep1	VC504, O1	Nepal, 1994	<i>floR, strAB, sul2, dfrA1</i>	KC886257	This study
ICEVchInd5	Ind5, O1	India, 1994	<i>floR, strAB, sul2, dfrA1</i>	GQ463142	[5]
ICEVchBan5	Ban5, O1	Bangladesh, 1998	<i>floR, strAB, sul2, dfrA1</i>	GQ463140	[5]
ICEVchHai1	2010EL-1786,O1	Haiti, 2010	<i>floR, strAB, sul2, dfrA1</i>	JN648379	[8]
Group 2					
ICEVchBan9	MJ1236, O1	Bangladesh, 1994	<i>floR, strAB, sul2, dfrA1^a,tet(A)</i>	CP001485	[5]
ICEVchMoz10	B33, O1	Mozambique, 2004	<i>floR, strAB, sul2, tet(A)</i>	ACHZ00000000	[5]
Group 3					
SXT ^{MO10}	MO10, O139	India, (1992) 2002	<i>dfrA18^b, floR, strAB, sul2</i>	AY055428	[25]
ICEVchInd4	Ind4, O139	India, 1997	<i>floR, strAB, sul2</i>	GQ463141	[5]

^a*dfrA1* is absent in ICEVchMoz10;

^b*dfrA18* is absent in ICEVchInd4;

NA, not available.

doi:10.1371/journal.pone.0108728.t001

A strain from Nigeria (VC833) and a strain from Nepal (VC504) were selected for ICE characterization by the whole genome sequencing approach. In general the ICEs have been named based on the species and country where they were identified [4] therefore, the ICEs characterized here were named ICEVchNig1 and ICEVchNep1. They represent the first ICEs characterized in *V. cholerae* O1 strains from these countries, where cholera has been epidemic and endemic for decades [12][13].

The ICEVchNig1 and ICEVchNep1 contained the same set of 94 open reading frames (ORFs), including the core genes, the five HS and variable regions. These ICEs differed from ICEVchHai1 by only two (ICEVchNig1) and eight (ICEVchNep1) single-nucleotide polymorphism along the entire sequence. Such SNPs occurred in the intergenic regions, except by one that corresponds to a silent mutation in the *pol* gene coding for a DNA polymerase V. Therefore, these polymorphisms did not impact the transmissibility of these ICEs.

Aiming to access the gene content and diversity of the complete ICE sequences, a comparative genomic analysis of ICEVchNig1 and ICEVchNep1 with all ICE sequences available (db-mml.sjtu.edu.cn/ICEberg/) was performed. Considering the ICEs structure and gene content, three groups were observed distributed within epidemic *V. cholerae* O1 strains. The ICEs within each of these groups had similar gene content and organization (Figure 1A). There are 58 ICEs described in *V. cholerae* but only eight have a complete sequence available (db-mml.sjtu.edu.cn/ICEberg/). Since ICEVchBan8 does not encode an *int*_{SXT} orthologous, it is not considered a member of the SXT/R391 family [5] and was not included in our analysis.

Most of the ICEs (ICEVchNig1, Nep1, Hai1, Ban5 and Ind5) belong to group 1; the group 2 and group3 contain two other ICEs each. These groups are distinguished by different gene content in the variable regions (VR) I, II and III as well as in the HS 1–5 (Figure 1A). The variable region III and HS3 tend to accumulate most of the antimicrobial resistance genes harbored by these ICEs. The ICEs from group 1 contain in the VR-III the *floR*; *strAB*; *sul2* antimicrobial resistance genes. The ICEs from group 2 and

group 3 contain this same set of genes in addition to *tet(A)* and *dfrA18*, respectively (Table 1). ICEs from group 1 contain a *dfrA1* gene in the HS3 region (Figure 1A). BLASTN searches were performed against the GenBank and this analysis revealed that the HS4 and HS5 nucleotide region is unique and characteristic of group 1 ICEs. The HS4 and HS5 gene content are represented by four ORFs (~5.4 kb) and nine ORFs (15 kb), respectively and assigned by RAST [14] and PGAAP [15] mainly as hypothetical proteins. These regions could be used as markers to identify, specifically, ICEs from group 1 distribution.

ICEs distribution

Most studies infer the presence of ICEs just by the antimicrobial resistance profile and identification of the *int*_{SXT} gene [16][17][18][19] without showing the complete ICE gene content, which actually characterizes an ICE. In order to establish the scenario of the distribution of group 1, 2 and 3 ICEs, we performed a screening of 206 *V. cholerae* genomes (GenBank, Mutreja et al [7] and Hendriksen et al [20] using as queries the *int*_{SXT} sequence (marker of SXT/R391 ICEs), and group 1 HS4 and HS5 regions.

We identified 140 *V. cholerae* O1 genomes harboring the entire sequence of group 1 ICE (Table S2). So far, the group 1 ICEs are composed by the siblings: ICEVchInd5 (India, 1994–2005) [9][5], ICEVchBan5 (Bangladesh, 1998) [5], ICEVchHai1 (Haiti, 2010) [8], ICEVchNig1 (Nigeria, 2010) and ICEVchNep1 (Nepal,1994) (this study).

The 140 group 1 ICEs are distributed among strains from India (1984–2009), Bangladesh (1991–2011), Nepal (1994–2010), Zimbabwe (2003), Zambia (2004), Kenya (2005–2009), Russia (2005–2012), Djibouti (2007), Tanzania (2009), South Africa (2009), Pakistan (2009–2010), Cameroon (2010), Nigeria (2010), Haiti (2010–2011) and the Dominican Republic (2011) (Figure 1B, Table S2), showing a widespread distribution as well as their persistence.

Of note, recently, Valia et al, 2013 [21] suggested that siblings of ICEVchInd5, prevalent in altered *V. cholerae* O1 strains causing

Table 2. BLAST search results using HS4 and HS5 ORFs from the group 1 ICE in metagenomic datasets.

Hotspot	ORF	Length (bp)	Function	Metagenomic project	Metagenomic site	No. of hits	Hit size (bp)	Identity (%)	E-value
HS5	1	801	hypothetical protein	AAM ^a	Station 365 (Antartic)	1	233	96	10 ⁻¹⁰⁰
	2	549	hypothetical protein	-	-	-	-	-	-
	3	3690	FIG00912888: hypothetical protein	AAM	Station 354 (Antartic)	3	364	96	10 ⁻¹⁵⁷
					Station 365 (Antartic)		348	93	10 ⁻¹³³
					Station 365 (Antartic)		530		
	4	3741	putative type II restriction enzyme methylase subunit	AAM	Station 236 (Antartic)	2	251	94	10 ⁻¹⁰²
					Station 365 (Antartic)		530		
					Fernandina Island (Galapagos)	1	930	85	0.0
HS4	5	2304	hypothetical protein	GOS ^b	Fernandina Island (Galapagos)	1	930	85	0.0
	6	2043	ATP-dependent protease La	GOS	Fernandina Island (Galapagos)	1	996	83	0.0
	7	771	hypothetical protein	-	-	-	-	-	-
					-	-	-	-	-
	8	816	hypothetical protein	-	-	-	-	-	-
					-	-	-	-	-
	1	1617	ATPase involved in DNA repair	-	-	-	-	-	-
	2	762	Transposase ISTB	GOS	Sargasso Station 11	1	756	97	0.0
3	1455	Transposase istA	GOS	Sargasso Station 11	1	1017	99	0.0	
4	1080	ATPase involved in DNA repair	-	-	-	-	-	-	

^aAAM, Antartic Aquatic Metagenome.^bGOS, Global Ocean Sampling Expedition.
doi:10.1371/journal.pone.0108728.t002

epidemics in the Indian subcontinent and Haiti had spread to Africa, once they identified ICE Vch Ang3, sibling of ICE Vch Ind5, in two *V. cholerae* O1 from Angola (2006) [21]. Herein, the identification of ICE Vch Nig1, sibling of ICE Vch Ind5, ICE Vch Ang3 and ICE Vch Hai1, in epidemic *V. cholerae* O1 from Nigeria (2009–2010) shows that, in fact, West Africa is resembling the scenario that has been occurring in the Indian subcontinent and in East African countries [9][22].

One notable factor in the ongoing evolution of pandemic cholera was the acquisition of the SXT/R391 ICE family [7]. Although the genetic relatedness of some of these ICEs were previously inferred [5][8], our results showed a dispersion of siblings of group 1 ICE over three continents and their persistence for more than two decades. Their persistence and widespread distribution could be due to their presence in a *V. cholerae* O1 lineage and/or because this mobile element can easily be transferred and maintained by positive selection among *V. cholerae* populations. Therefore, we speculate that beyond their multidrug resistance conferred by a set of antimicrobial resistance genes, several hypothetical proteins, encoded in the HS4 and HS5 regions, could have a role in the fitness of the strains.

Metagenomic analyzes

In order to gain insights into the possible origin of HS4 and HS5 sequences, unique and exclusive regions of siblings of group 1 ICE, we searched for their presence in environmental metagenomic datasets. Hits were obtained for HS4 and HS5 ORFs as well as the *int*_{SXT} gene in the Sargasso sea, a mangrove in the Fernandina Island (Galapagos) and in the Ace Lake Vestfold Hills (Antarctic) (Figure 1B and Table 2). These hits could be due to the presence of epidemic *V. cholerae* O1 harboring this group 1 ICEs. To test this hypothesis, we searched for the presence of the major virulence determinants of epidemic *V. cholerae* O1 (CTX Φ and TCP) in these environmental metagenomic datasets and no hits were obtained. Thus, SXT/R391 ICEs, HS4 and HS5 are present in marine environments away from the direct influence of a cholera pandemic area.

Conclusions

In the present study, the complete sequences of ICEs from Nigeria and Nepal were determined and compared to other complete ICEs from *V. cholerae* O1 strains. We identified three types of ICEs within epidemic *V. cholerae* O1, which had a similar gene content. In the further analysis, performing BLASTn searches against *V. cholerae* O1 genomes, we found that a type of ICEs showed widespread distribution and persistence over two decades.

There is a spatio-temporal prevalence of ICE in *V. cholerae* O1, carrying a set of antimicrobial resistance determinants and exclusive gene content. This element had already been identified and addressed in *V. cholerae* strains from four countries but our study revealed its presence in strains from more ten countries. The prevalence and dispersion of this ICE can be indicative of its role in the fitness of the current pandemic lineage. Moreover, this study revealed the scenario showing the occurrence of this ICE since the current *V. cholerae* ICE nomenclature is based on their geographic origin not considering their gene content. Therefore, these sibling ICEs are in epidemic *V. cholerae* O1, lasting for more than two decades and spreading worldwide.

Materials and Methods

Forty-one clinical *V. cholerae* O1 strains from the Bacteria Culture Collection of Environment and Health at the Oswaldo Cruz Foundation, FIOCRUZ were included in this study. These strains were storage in MicroBank beads (ProLab Diagnostics) at -70°C . All of them were screened for the presence of genetic elements associated with antimicrobial resistance, such as ICEs, class 1 and class 2 integrons [12].

Susceptibility testing was performed by the disc diffusion method according to the CLSI guidelines [23] using the following commercial antibiotics: erythromycin (15 μg), gentamicin (10 μg), amikacin (30 μg), sulfonamide (300 μg), sulfamethoxazole (25 μg), trimethoprim/sulfamethoxazole (30 μg), trimethoprim (5 μg), chloramphenicol (30 μg), tetracycline (30 μg), ampicillin (10 μg), cefoxitin (30 μg), cefuroxime (30 μg), ceftazidime (30 μg), streptomycin (10 μg), spectinomycin (100 μg), azithromycin (15 μg), nalidixic acid (30 μg), ciprofloxacin (5 μg). The MICs of tetracycline, chloramphenicol, streptomycin and trimethoprim/sulfamethoxazole were also determined by using E-test Strips (BioMerieux). The MIC of florfenicol (Sigma) was addressed by using the agar dilution method [23] on Mueller-Hinton plates containing varying concentrations of this antibiotic ranging from 4 mg/L to 32 mg/L. In this test, the inoculum was brought to an optical density of 1.0 at a wavelength of 610 nm ($\sim 1 \times 10^8$ bacterial cells/ml) according to the McFarland scale. When no interpretive criteria for *V. cholerae* were available based on CLSI guidelines, breakpoints for enterobacteriaceae were applied.

The ICEs gene content and insertion site on the chromosome were determined based on the whole-genome sequencing of VC833 (Nigeria, 2009) and VC504 (Nepal, 1994) strains. Single-end 454 pyrosequencing (GS-Junior from Roche Diagnostics, USA) from the high-throughput platform of Oswaldo Cruz Institute/FIOCRUZ. The reads were assembled by using Newbler (Roche Diagnostics) and UGENE v1.9.8 [24] software. Custom primer walking by using Sanger sequencing closed the gaps of the ICE region. The recovered ICEs were annotated by RAST [14] and PGAAP software [15]. The nucleotide sequences of the identified ICEs were deposited in GenBank under accession numbers KC886258 and KC886257.

Complete ICE sequences were retrieved from the ICEberg database (db-mml.sjtu.edu.cn/ICEberg/), a web-based resource for integrative and conjugative elements found in bacteria. In the ICEberg site, there are 58 *V. cholerae* ICEs described, but only eight of these have entire ICE sequences. So, these eight ICE sequences were used for comparison with the ICE Vch Nig1 and ICE Vch Nep1. The ICE distribution was addressed using HS4, HS5 and *int*_{SXT} as queries in BLASTn searches against *V. cholerae* genomes from Genbank, Sequence Reads Archive (SRA) [20] and European Nucleotide Archive (ENA) [7]. Moreover, we performed searches against CAMERA metagenome database (camera.calit2.net/) with a similarity threshold based on an e-value below to $1e-20$ (April 2014).

Supporting Information

Table S1 *V. cholerae* O1 strains from the Bacteria Culture Collection of Environment and Health at the Oswaldo Cruz Foundation, FIOCRUZ screened in this study.
(DOC)

Table S2 *V. cholerae* O1 genomes harboring the group 1 ICE.
(DOC)

Author Contributions

Conceived and designed the experiments: MAM ACPV. Performed the experiments: MAM BNA. Analyzed the data: MAM BNA ELF ACC

ACPV. Contributed reagents/materials/analysis tools: MAM BNA ACPV. Wrote the paper: MAM BNA ELF ACC ACPV.

References

- Kitaoka M, Miyata ST, Unterweger D, Pukatzki S (2011) Antibiotic resistance mechanisms of *Vibrio cholerae*. *J Med Microbiol* 60: 397–407. Available: <http://www.ncbi.nlm.nih.gov/pubmed/21252269>. Accessed 4 July 2013.
- Burrus V, Waldor MK (2004) Shaping bacterial genomes with integrative and conjugative elements. *Res Microbiol* 155: 376–386. Available: <http://www.ncbi.nlm.nih.gov/pubmed/15207870>. Accessed 4 July 2013.
- Beaber JW, Burrus V, Hochhut B, Waldor MK (2002) Comparison of SXT and R391, two conjugative integrating elements: definition of a genetic backbone for the mobilization of resistance determinants. *Cell Mol Life Sci* 59: 2065–2070. Available: <http://www.ncbi.nlm.nih.gov/pubmed/12568332>. Accessed 4 July 2013.
- Burrus V, Marrero J, Waldor MK (2006) The current ICE age: biology and evolution of SXT-related integrating conjugative elements. *Plasmid* 55: 173–183. Available: <http://www.ncbi.nlm.nih.gov/pubmed/16530834>. Accessed 12 March 2013.
- Wozniak RAF, Fouts DE, Spagnoletti M, Colombo MM, Ceccarelli D, et al. (2009) Comparative ICE genomics: insights into the evolution of the SXT/R391 family of ICEs. *PLoS Genet* 5: e1000786. Available: <http://www.pubmedcentral.nih.gov/articlerender.fcgi?artid=2791158&tool=pmcentrez&rendertype=abstract>. Accessed 2 September 2010.
- Balado M, Lemos ML, Osorio CR (2013) Integrating conjugative elements of the SXT/R391 family from fish-isolated *Vibrios* encode restriction-modification systems that confer resistance to bacteriophages. *FEMS Microbiol Ecol* 83: 457–467. Available: <http://www.ncbi.nlm.nih.gov/pubmed/22974320>. Accessed 4 July 2013.
- Mutreja A, Kim DW, Thomson NR, Connor TR, Lee JH, et al. (2011) Evidence for several waves of global transmission in the seventh cholera pandemic. *Nature* 477: 462–465. Available: <http://www.nature.com/doi/10.1038/nature10392>. Accessed 18 February 2013.
- Sjölund-Karlsson M, Reimer A, Folster JP, Walker M, Dahourou GA, et al. (2011) Drug-resistance mechanisms in *Vibrio cholerae* O1 outbreak strain, Haiti, 2010. *Emerg Infect Dis* 17: 2151–2154. Available: <http://www.ncbi.nlm.nih.gov/pubmed/22141136>. Accessed 11 July 2012.
- Ceccarelli D, Spagnoletti M, Bacciu D, Danin-Poleg Y, Mendiratta DK, et al. (2011) ICEVchInd5 is prevalent in epidemic *Vibrio cholerae* O1 El Tor strains isolated in India. *Int J Med Microbiol IJMM* 301: 318–324. Available: <http://www.ncbi.nlm.nih.gov/pubmed/21276749>. Accessed 7 May 2013.
- Ceccarelli D, Spagnoletti M, Cappuccinelli P, Burrus V, Colombo MM (2011) Origin of *Vibrio cholerae* in Haiti. *Lancet Infect Dis* 11: 262. Available: <http://www.ncbi.nlm.nih.gov/pubmed/21453867>. Accessed 2011 Jul 18.
- Talkington D, Bopp C, Tarr C, Parsons MB, Dahourou G, et al. (2011) Characterization of Toxigenic *Vibrio cholerae* from Haiti, 2010–2011. *Emerg Infect Dis* 17: 2122–2129. Available: <http://www.ncbi.nlm.nih.gov/pubmed/22099116>.
- Marin MA, Thompson CC, Freitas FS, Fonseca EL, Aboderin A O, et al. (2013) Cholera outbreaks in Nigeria are associated with multidrug resistant atypical El Tor and non-O1/non-O139 *Vibrio cholerae*. *PLoS Negl Trop Dis* 7: e2049. Available: <http://dx.plos.org/10.1371/journal.pntd.0002049>. Accessed 2013 Apr 14.
- Reimer AR, Domselaar G Van, Stroika S, Walker M, Kent H, et al. (2011) Comparative Genomics of *Vibrio cholerae* from Haiti, Asia, and Africa. *Emerg Infect Dis* 17: 2113–2121. Available: <http://www.ncbi.nlm.nih.gov/pubmed/22099115>.
- Aziz RK, Bartels D, Best AA, DeJongh M, Disz T, et al. (2008) The RAST Server: rapid annotations using subsystems technology. *BMC Genomics* 9: 75. Available: <http://www.pubmedcentral.nih.gov/articlerender.fcgi?artid=2265698&tool=pmcentrez&rendertype=abstract>. Accessed 2013 Mar 6.
- Angiuoli S V, Gussman A, Klimke W, Cochrane G, Field D, et al. (2008) Toward an online repository of Standard Operating Procedures (SOPs) for (meta)genomic annotation. *OMICS* 12: 137–141. Available: <http://www.pubmedcentral.nih.gov/articlerender.fcgi?artid=3196215&tool=pmcentrez&rendertype=abstract>. Accessed 2013 Jun 4.
- Pugliese N, Maimone F, Scarscia M, Materu SF, Pazzani C (2009) SXT-related integrating conjugative element and IncC plasmids in *Vibrio cholerae* O1 strains in Eastern Africa. *J Antimicrob Chemother* 63: 438–442. Available: <http://www.ncbi.nlm.nih.gov/pubmed/19155226>. Accessed 2013 Jul 4.
- Opintan J a, Newman MJ, Nsiah-Poodoh OA, Okeke IN (2008) *Vibrio cholerae* O1 from Accra, Ghana carrying a class 2 integron and the SXT element. *J Antimicrob Chemother* 62: 929–933. Available: <http://www.pubmedcentral.nih.gov/articlerender.fcgi?artid=2566517&tool=pmcentrez&rendertype=abstract>. Accessed 2012 Apr 16.
- Amita Chowdhury SR, Thungapathra M, Ramamurthy T, Nair GB, et al. (2003) Class I integrons and SXT elements in El Tor strains isolated before and after 1992 *Vibrio cholerae* O139 outbreak, Calcutta, India. *Emerg Infect Dis* 9: 500–502. Available: <http://www.ncbi.nlm.nih.gov/pubmed/19763428>. Accessed 24 March 2014.
- Bani S, Mastromarino PN, Ceccarelli D, Le Van A, Salvia AM, et al. (2007) Molecular characterization of ICEVchVie0 and its disappearance in *Vibrio cholerae* O1 strains isolated in 2003 in Vietnam. *FEMS Microbiol Lett* 266: 42–48. Available: <http://www.ncbi.nlm.nih.gov/pubmed/17233716>. Accessed 2014 Mar 25.
- Hendriksen RS, Price LB, Schupp JM, Gillette JD, Kaas RS, et al. (2011) Population genetics of *Vibrio cholerae* from Nepal in 2010: evidence on the origin of the Haitian outbreak. *MBio* 2: e00157–11. Available: <http://mbio.asm.org/content/2/4/e00157-11.short>. Accessed 2013 Mar 17.
- Valia R, Taviani E, Spagnoletti M, Ceccarelli D, Cappuccinelli P, et al. (2013) *Vibrio cholerae* O1 epidemic variants in Angola: a retrospective study between 1992 and 2006. *Front Microbiol* 4: 354. Available: <http://www.pubmedcentral.nih.gov/articlerender.fcgi?artid=3842873&tool=pmcentrez&rendertype=abstract>. Accessed 2014 Jan 20.
- Piarroux R, Faucher B (2012) Cholera epidemics in 2010: respective roles of environment, strain changes, and human-driven dissemination. *Clin Microbiol Infect Off Publ Eur Soc Clin Microbiol Infect Dis* 18: 231–238. Available: <http://www.ncbi.nlm.nih.gov/pubmed/22288560>.
- Clinical and Laboratory Standards Institute (2012) Performance Standards for Antimicrobial Susceptibility Testing: Twenty-Second Informational Supplement. M100–S22. CLSI, Wayne, PA.
- Okonechnikov K, Golosova O, Fursov M (2012) Unipro UGENE: a unified bioinformatics toolkit. *Bioinformatics* 28: 1166–1167. Available: <http://www.ncbi.nlm.nih.gov/pubmed/22368248>. Accessed 2012 Dec 24.
- Waldor MK, Tschäpe H, Mekalanos JJ (1996) A new type of conjugative transposon encodes resistance to sulfamethoxazole, trimethoprim, and streptomycin in *Vibrio cholerae* O139. *J Bacteriol* 178: 4157–4165. Available: <http://www.pubmedcentral.nih.gov/articlerender.fcgi?artid=178173&tool=pmcentrez&rendertype=abstract>.