
Pygmy Rice Rat as Potential Host of Castelo dos Sonhos Hantavirus

**Elizabeth S. Travassos da Rosa,
Daniele B. A. Medeiros, Márcio R.T. Nunes,
Darlene B. Simith, Armando de Souza Pereira,
Mauro R. Elkhoury, Marília Lavocat,
Aparecido A.R. Marques, Alba Valéria Via,
Paulo D'Andrea, Cibele R. Bonvicino,
Elba Regina S. Lemos,
and Pedro F.C. Vasconcelos**

To study the dynamics of wild rodent populations and identify potential hosts for hantavirus, we conducted an eco-epidemiologic study in Campo Novo do Parecis, Mato Grosso State, Brazil. We detected and genetically characterized Castelo dos Sonhos virus found in a species of pygmy rice rat (*Oligoryzomys utiaritensis*).

Hantaviruses are RNA viruses (family *Bunyviridae*, genus *Hantavirus*) distributed worldwide. In nature, these viruses are maintained in persistently infected rodents without disease manifestation. Hantaviruses are transmitted to humans through a respiratory route, mainly by inhalation of aerosolized, virus-infected particles in rodent excreta, such as feces, saliva, or urine. Hantavirus pulmonary syndrome (HPS) was first recognized in 1993 after an outbreak of acute respiratory distress syndrome associated with Sin Nombre virus occurred in the southwestern United States (1). In the same year, another hantavirus (Jquitiba virus) was identified in association with HPS cases in the state of São Paulo in southeastern Brazil (2).

Since 1993, molecular techniques have been used to identify New World hantaviruses in samples obtained from humans suspected of having hantavirus infection

Author affiliations: Instituto Evandro Chagas, Ananindeua, Brazil (E.S. Travassos da Rosa, D.B.A. Medeiros, M.R.T. Nunes, D.B. Smith, A. de Souza Pereira, P.F.C. Vasconcelos); Fundação Nacional de Saúde, Brasília, Brazil (M.R. Elkhoury); Secretaria de Vigilância em Saúde, Brasília (M.R. Elkhoury, M. Lavocat); Secretaria de Saúde do Estado de Mato Grosso, Cuiabá, Brazil (A.A.R. Marques, A.V. Via); Fundação Oswaldo Cruz, Rio de Janeiro, Brazil (P. D'Andrea, C.R. Bonvicino, E.R.S. Lemos); Instituto Nacional de Câncer, Rio de Janeiro (C.R. Bonvicino); and Universidade do Estado do Pará, Belém, Brazil (P.F.C. Vasconcelos).

DOI: 10.3201/eid1708.101547

throughout the Americas and from captured rodents that test seropositive for hantavirus-specific immunoglobulin (Ig) G (3–5). Most known hantaviruses associated with rodent reservoir species have been identified in this way. However, for some hantaviruses, including Castelo dos Sonhos virus (CASV), the virus–host association remains unknown.

CASV was first identified in samples from a patient with HPS in 1995 and was the first hantavirus described in the Brazilian Amazon region (3). We report here data obtained during an eco-epidemiologic study conducted in the municipality of Campo Novo do Parecis, Mato Grosso State in central-western Brazil (Figure 1), including the identification of a possible rodent reservoir for CASV.

The Study

During 2005 through and 2007, research was conducted in the municipality of Campo Novo do Parecis (13°40'31''S 57°53'31''W) to study the dynamics of wild rodent populations and prevalence of hantavirus infection. Of 459 rodents captured during the project, 89 were classified as *Oligoryzomys utiaritensis* (a species of pygmy rice rat). Blood samples obtained from the rats were serologically screened by IgG-ELISA by using the Andes virus antigen as previously described (5).

DNA samples from the rats were isolated from liver preserved in ethanol. We amplified cytochrome *b* mitochondrial DNA (≈1,140 bp) with primers L14724 and Citb-rev by using standard PCR procedures and sequenced the samples with the same primers and an additional internal primer MVZ16 (6). Sequencing was performed with ABI 3130xl (Applied Biosystems, Foster City, CA, USA) automatic DNA sequencer. Kimura 2-parameter models were used for constructing neighbor-joining (NJ) dendrograms by using MEGA4 software (7). Confidence intervals for NJ trees were obtained by bootstrap analysis based on 2,000 replicates. Despite morphologic similarities between *O. nigripes* (black-footed pygmy rice rat) and *O. utiaritensis*, the NJ analysis showed that *O. utiaritensis* pygmy rice rats are more closely related to Moojen's pygmy rice rat (*O. moojeni*) (7.4% Kimura 2-parameter distance estimates) than to any other *Oligoryzomys* species (Figure 2, panel A). We deposited all animal carcasses in the National Museum, Rio de Janeiro, Brazil. The record of the 4 CASV-positive animals in the National Museum and other data are shown in Table 1.

For hantavirus detection, reverse transcription PCR was used to synthesize cDNA with generic hantavirus primers (3) as previously described (8). N gene partial nucleotide sequences were obtained by the Sanger method (9) by using the same primers. At least 3 amplicons per sample were sequenced in both directions to improve coverage and confidence on results. The obtained sequences

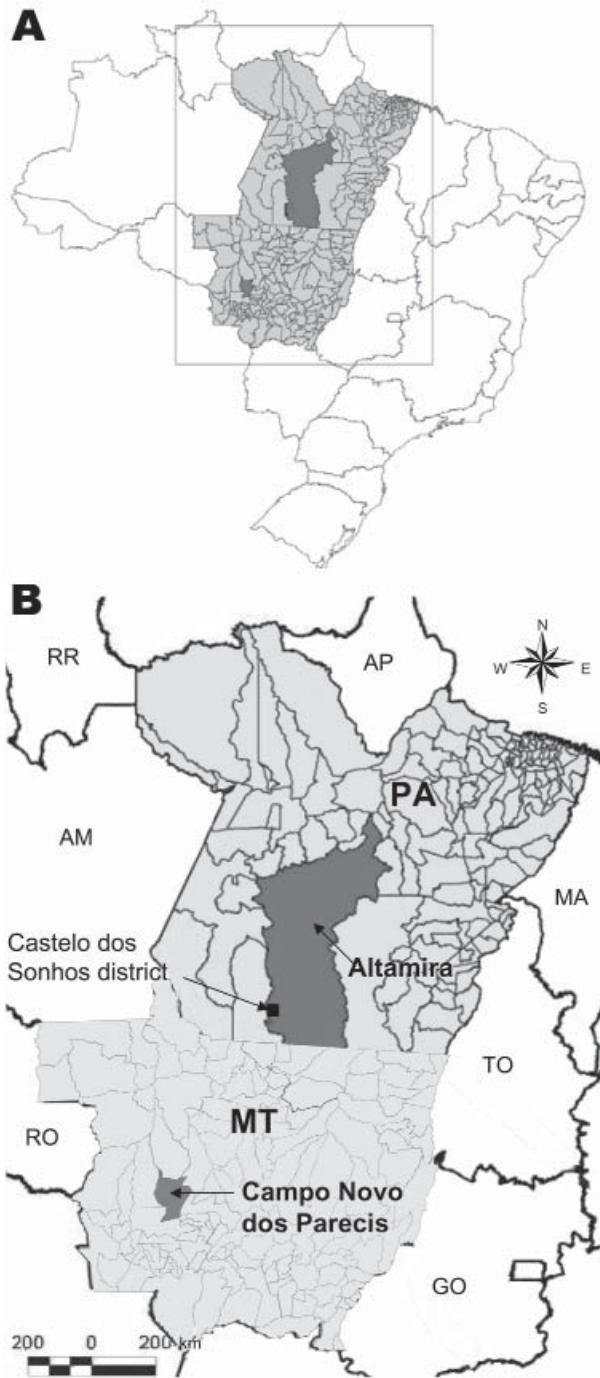


Figure 1. Location of Mato Grosso State, Brazil, showing the municipality of Campo Novo do Parecis where pygmy rice rats (*Oligoryzomys utiariensis*) were found infected with Castelo dos Sonhos virus and the Castelo dos Sonhos district in the municipality of Altamira, Pará State, both locations where hantavirus pulmonary syndrome cases caused by Castelo dos Sonhos virus have been frequently found. MT, Mato Grosso State; PA, Pará State; AP, Amapá State; AM, Amazonas State; MA, Maranhão State; TO, Tocantins State; RO, Rondônia State; GO, Goiás State. Source: Laboratório de Geoprocessamento do Instituto Evandro Chagas, Secretaria de Vigilância em Saúde do Ministério da Saúde.

were aligned with other hantavirus sequences available in GenBank (www.ncbi.nlm.nih.gov) with ClustalW software (www.clustal.org) in BioEdit 5.0 (www.mbio.ncsu.edu/BioEdit/biodoc.pdf). The maximum-likelihood and Bayesian methods were implemented in PHYML and MRBAYES version 3, respectively, and used for phylogenetic reconstructions (10,11). Modeltest version 3.7 was used to determine the best nucleotide substitution model (12).

Four of 89 pygmy rice rat samples tested were IgG positive (AN711258, AN717313, AN717307, and AN729965) (Table 1). Partial N gene nucleotide sequences (≈ 400 nt; nucleotide position from 30–450 related to the CASV N gene sequence; GenBank accession no. AF307324) were obtained from lung fragments of the 4 IgG-positive rodents. Obtained sequences showed high nucleotide and amino acid homology (92.4% and 100%, respectively) with other CASV sequences in GenBank. The rodent-related strains showed 0.6% nt divergence among them, 2.1% nt sequence divergence with HPS-related strains, and 7.6% nt sequence divergence with the CASV prototype strain. These results were also confirmed by phylogenetic analysis that grouped the studied strains based on the N gene partial sequence analysis together with CASV prototype strain and local strains recovered from patients with HPS (Table 2) in the area (Figure 2, panel B).

After its isolation in 1995 from 1 patient with HPS in the Castelo dos Sonhos district of Altamira in southeast Pará State, CASV has only occasionally been detected in Pará and neighboring Mato Grosso states in Brazil's Amazon region. However, a recent study performed among residents of 4 municipalities along interstate highway BR-163, which runs between southeastern Pará and northern Mato Grosso, has suggested continuous CASV circulation with occurrence of small outbreaks, sporadic HPS cases, and silent infections (13). In fact, between 1995 and 2010, a total of 72 HPS cases in southeastern Pará State were reported to the Brazilian Ministry of Health. Although eco-epidemiologic studies were conducted as part of case investigations, none of the captured rodent species were found to be reservoirs for CASV on the basis of molecular tests used to detect the hantavirus genome.

Among Brazilian states, Mato Grosso has the fourth highest number of reported HPS cases. Cases have been associated with agricultural activities, mainly cultivation of soybean and grains, and occasionally corn and other beans. Previous studies in Mato Grosso have demonstrated the circulation of the Laguna Negra virus in the region as associated with rodents belonging to the genus *Calomys* (14,15). However, the complexity of clinical outcomes observed for patients, as well as the high case-fatality rate reported in the state of Mato Grosso and Brazilian Amazon (43.3%), were not similar to data associated with

Laguna Negra infections in Paraguay (3), which suggests that 2 different hantaviruses related to HPS cases are co-circulating in this state.

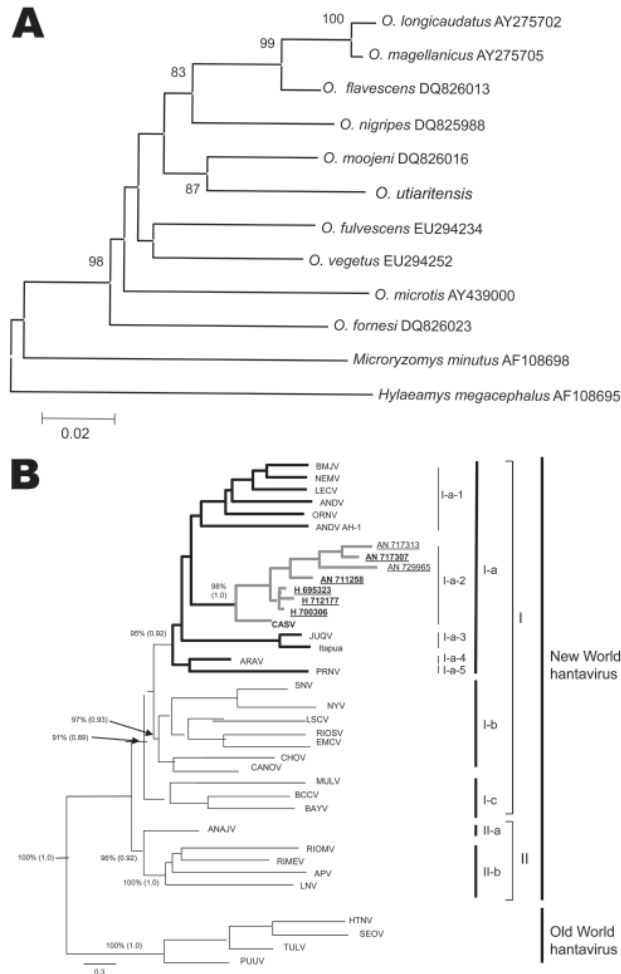


Figure 2. A) Phylogenetic tree constructed by using the neighbor-joining method for characterization of pygmy rice rats by using the cytochrome *b* DNA. Scale bar indicates nucleotide sequence divergence among the rodent species sequences. B) Phylogenetic tree using the maximum-likelihood (ML) and Bayesian methods based on partial nucleotide sequences of N gene obtained from pygmy rice rats captured in Campo Novo do Parecis, Mato Grosso State, Brazilian Amazon (New World major group, Group I, Clade Ia, Subclade Ia2, underlined strains and branches highlighted in **boldface**). Numbers at right indicate (left to right) subclades, clades, groups, and major groups. Green branch corresponds to Castelo dos Sonhos virus, including prototype strain, samples from pygmy rice rats, and hantavirus pulmonary syndrome-associated strains. Values over each main node placed outside and inside parentheses correspond to ML (bootstrap values) and Bayesian posterior probabilities (BPP), respectively. The arrows indicate the exact position for the bootstrap and BPP values over the main branch nodes. Scale bar indicates nucleotide sequence divergence among the hantavirus sequences. Complete definitions and GenBank accession numbers are available online (www.cdc.gov/EID/17/8/101547-F2.htm).

Table 1. Pygmy rice rat (*Oligoryzomys utiaritensis*) samples from which Castelo dos Sonhos virus genome was amplified, sequenced, and phylogenetically analyzed, Brazil*

IEC no.	SVS no.	MN no.	GenBank accession no.
AN 711258	328	MN 74939	HQ719472
AN 717307	33	MN 75063	HQ719471
AN 717313	39	MN 74965	HQ719470
AN 729965	183	MN 75064	HQ719469

*IEC, Instituto Evandro Chagas; SVS, Secretaria de Vigilância em Saúde; MN, Museu Nacional.

Table 2. Human samples from which Castelo dos Sonhos virus genome was amplified, sequenced, and phylogenetically analyzed, Brazil*

IEC number	Patient age, y/sex	Place of infection†	GenBank accession no.
H 695323	24/M	Castelo dos Sonhos	HQ719468
H 700306	30/M	Castelo dos Sonhos	HQ719466
H 712177	36/M	Cachoeira da Serra	HQ719467

*IEC, Instituto Evandro Chagas.

†All located in Pará State, Brazil.

Conclusions

The study of dynamics of rodent populations during the period identified the rodent population that naturally occurs in the rural zone of the municipality of Campo Novo do Parecis in Mato Grosso. Lung samples from 4 pygmy rice rats showed anti-hantavirus antibodies, yielding hantavirus RNA amplification. Sequencing and phylogenetic analysis indicated those rodents were infected by CASV, suggesting this species of pygmy rice rat as a potential host of CASV. Furthermore, this rodent species was previously unknown in the Amazon region. Pygmy rice rats may be a reservoir for CASV, and this hantavirus may be responsible for HPS cases in Campo Novo do Parecis and in neighboring municipalities located in the midwestern region of Mato Grosso state in central Brazil, near the border with Pará state, and also in the Castelo dos Sonhos district of Pará state.

Acknowledgments

We are grateful to staff members of the Health Department of Campo Novo do Parecis and the Mato Grosso State Health Department for logistical support, Osvaldo Vaz and Mario Ferro for their field work support, the LabGeo at Instituto Evandro Chagas for help with Figure 1, and Brendan Flannery for his critical review of the manuscript.

This study was partially supported by Conselho Nacional para o Desenvolvimento Científico e Tecnológico (grants 301641/2010-2 8 and 302987/2008-8), Conselho Nacional para o Desenvolvimento Científico e Tecnológico/Fundação de Amparo à Pesquisa do Estado do Pará/Coordenação de Aperfeiçoamento de Pessoal de Nível Superior grant 573739/2008-0 (Instituto Nacional de Ciência e Tecnologia para Febres Hemorrágicas Virais), Secretaria de Ciência e Tecnologia (Secretaria de Ciência

e Tecnologia /Fundo Estadual de Ciência e Tecnologia/EDITAL PPRH 2003 CT), and Instituto Evandro Chagas, Fundação Oswaldo Cruz, and Secretaria de Vigilância em Saúde.

Dr Travassos da Rosa is a senior researcher in the Department of Arbovirology and Hemorrhagic Fevers of the Instituto Evandro Chagas, Ananindeua, Brazil, where she is responsible for rabies and hantavirus laboratories. She is especially interested in diagnosis, epidemiology, and molecular epidemiology of arboviruses, hantaviruses, and rabies virus.

References

- Nichol ST, Spiropoulou CE, Morzunov S, Rollin PE, Ksiazek TG, Feldmann H, et al. Genetic identification of a hantavirus associated with an outbreak of acute respiratory illness. *Science*. 1993;262:914–7. doi:10.1126/science.8235615
- Iversson LB, Travassos da Rosa APA, Rosa MDB, Lomar AV, Sasaki MGM, Leduc JW. Infecção humana por hantavirus nas regiões Sul e Sudeste do Brasil. *Rev Assoc Med Bras*. 1994;40:85–92.
- Johnson AM, Souza LTM, Ferreira IB, Pereira LE, Ksiazek TG, Rollin PE, et al. Genetic investigation of novel hantaviruses causing fatal HPS in Brazil. *J Med Virol*. 1999;59:527–35. doi:10.1002/(SICI)1096-9071(199912)59:4<527::AID-JMV17>3.0.CO;2-Y
- Travassos da Rosa ES, Mills JM, Padula PJ, Elkhoury MR, Ksiazek TG, Mendes WS, et al. Newly recognized hantaviruses associated with hantavirus pulmonary syndrome in northern Brazil: partial genetic characterization of viruses and serologic implication of likely reservoirs. *Vector Borne Zoonotic Dis*. 2005;5:11–9. doi:10.1089/vbz.2005.5.11
- Padula PJ, Rossi CM, Della Vale MO, Martínez PV, Colavecchia SB, Edelstein A, et al. Development and evaluation of a solid-phase enzyme immunoassay based on Andes hantavirus recombinant nucleoprotein. *J Med Microbiol*. 2000;49:149–55.
- Bonvicino CR, Moreira MAM. Molecular phylogeny of the genus *Oryzomys* (Rodentia: Sigmodontinae) based on cytochrome *b* DNA sequences. *Mol Phylogenet Evol*. 2001;18:282–92. doi:10.1006/mpev.2000.0878
- Tamura K, Dudley J, Nei M, Kumar S. MEGA4: Molecular Evolutionary Genetics Analysis (MEGA) software version 4.0. *Mol Biol Evol*. 2007;24:1596–9. doi:10.1093/molbev/msm092
- Travassos da Rosa ES, Lemos ERS, Medeiros DBA, Simith DB, Pereira AS, Elkhoury MR, et al. Hantaviruses and hantavirus pulmonary syndrome, Maranhão, Brazil. *Emerg Infect Dis*. 2010;16:1952–5.
- Sanger F, Nicklen S, Coulson AR. DNA sequencing with chain-terminating inhibitors. *Proc Natl Acad Sci U S A*. 1977;74:5463–7. doi:10.1073/pnas.74.12.5463
- Guindon S, Gascuel OA. Simple, fast, and accurate algorithm to estimate large phylogenies by maximum likelihood. *Syst Biol*. 2003;52:696–704. doi:10.1080/10635150390235520
- Ronquist F, Huelsenbeck JP. MRBAYES: Bayesian inference of phylogenetic trees 3. *Bioinformatics*. 2001;17:754–5. PubMed
- Posada D, Crandall KA. Modeltest: testing the model of DNA substitution. *Bioinformatics*. 1998;14:817–8. doi:10.1093/bioinformatics/14.9.817
- Medeiros DBA, Travassos da Rosa ES, Marques AAR, Simith DB, Carneiro AR, Chiang JO, et al. Circulation of hantaviruses in the influence area of the Cuiabá-Santarém highway. *Mem Inst Oswaldo Cruz*. 2010;105:665–71. doi:10.1590/S0074-02762010000500011
- Travassos da Rosa ES, Elba RS, Medeiros DBA, Nunes MRT, Simith DB, Silva OV, et al. Associação dos casos de síndrome cardiopulmonar por hantavirus na área de influência da BR 324 com o vírus Laguna Negra. In: Livro de Resumos II Workshop Nacional sobre pesquisas aplicadas em Hantavirus, 2008, Cuiabá. p. 11.
- Raboni SM, de Borba L, Hoffmann FG, de Noronha L, Azevedo ML, Carstensen S, et al. Evidence of circulation of Laguna Negra-like hantavirus in the central west of Brazil: case report. *J Clin Virol*. 2009;45:153–6. doi:10.1016/j.jcv.2009.03.015

Address for correspondence: Pedro F. C. Vasconcelos, Departamento de Arbovirologia e Febres Hemorrágicas, Instituto Evandro Chagas, Rodovia BR-316, Km 07, CEP 67030-000, Ananindeua, Pará, Brazil; email: pedrovasconcelos@iec.pa.gov.br

Find emerging infectious disease information on **facebook**
<http://www.facebook.com/>