

RESEARCH ARTICLE

Leishmania infection inhibits macrophage motility by altering F-actin dynamics and the expression of adhesion complex proteins

Juliana Perrone Bezerra de Menezes^{1,2} | Amrita Koushik¹ | Satarupa Das³ | Can Guven³ | Ariel Siegel¹ | Maria Fernanda Laranjeira-Silva¹ | Wolfgang Losert³ | Norma W. Andrews¹

¹Department of Cell Biology and Molecular Genetics, University of Maryland, Maryland, USA

²Laboratório de Patologia e Biointervenção, CPqGM, FIOCRUZ, Salvador, Bahia, Brazil

³Department of Physics, University of Maryland, Maryland, USA

Correspondence

Norma W. Andrews, Department of Cell Biology and Molecular Genetics, 2134 Bioscience Research Building, University of Maryland, College Park MD 20742-5815. Email: andrewsn@umd.edu

Funding Information

National Institutes of Health, R01 GM085574. National Institutes of Health, R01 AI67979.

Abstract

Leishmania is an intracellular protozoan parasite that causes a broad spectrum of clinical manifestations, ranging from self-healing skin lesions to fatal visceralizing disease. As the host cells of choice for all species of *Leishmania*, macrophages are critical for the establishment of infections. How macrophages contribute to parasite homing to specific tissues and how parasites modulate macrophage function are still poorly understood. In this study, we show that *Leishmania amazonensis* infection inhibits macrophage roaming motility. The reduction in macrophage speed is not dependent on particle load or on factors released by infected macrophages. *L. amazonensis*-infected macrophages also show reduced directional migration in response to the chemokine MCP-1. We found that infected macrophages have lower levels of total paxillin, phosphorylated paxillin, and phosphorylated focal adhesion kinase when compared to noninfected macrophages, indicating abnormalities in the formation of signaling adhesion complexes that regulate motility. Analysis of the dynamics of actin polymerization at peripheral sites also revealed a markedly enhanced F-actin turnover frequency in *L. amazonensis*-infected macrophages. Thus, *Leishmania* infection inhibits macrophage motility by altering actin dynamics and impairing the expression of proteins that function in plasma membrane–extracellular matrix interactions.

1 | INTRODUCTION

Leishmaniasis is a parasitic infection with a broad spectrum of clinical manifestations ranging from self-limiting cutaneous lesions to diffuse cutaneous, mucocutaneous, or visceral forms, which represent a serious public health challenge. An estimated 12 million people worldwide are currently infected with these parasites, with another 350 million at risk of infection. If untreated, the visceral form of the disease can cause high mortality. Leishmaniasis is initiated by inoculation of *Leishmania* promastigotes into the skin of a susceptible host, during the blood meal of an infected sand fly (Liew & O'Donnell, 1993). Thereafter, the parasites may remain at the inoculation site or disseminate into other host tissues. Within the mammalian host, *Leishmania* parasites can only survive and replicate intracellularly and are found predominantly inside acidic parasitophorous vacuoles (PV) of host macrophages (Antoine, Prina, Lang, & Courret, 1998). The detection of mononuclear phagocytes infected by *Leishmania* in the bloodstream (Liarte et al., 2001) is consistent with the possibility that infected macrophages migrate from the original infection site in the

skin, playing a role in dissemination of the disease. However, the mechanisms involved in *Leishmania* dissemination to different host tissues, homing, and persistence of infected cells in vivo are still poorly understood.

Infection with *Leishmania* has been shown to modulate phagocyte functions associated with cell migration such as signaling, spreading, and adhesion to the substrate (Bray, Heikal, Kaye, & Bray, 1983; De Almeida, Cardoso, & Barral-Netto, 2003; Carvalhal et al., 2004; Pinheiro, Hermida, Macedo, Mengel, & Bafica, 2006). Some of these studies suggested that *Leishmania*-induced defects in substrate adhesion might facilitate macrophage migration after infection, promoting parasite dissemination in vivo (Carvalhal et al., 2004; Pinheiro et al., 2006; Figueira et al., 2015). However, other authors have reached the opposite conclusion, proposing that infection with *Leishmania* impairs the ability of macrophages to migrate (Bray et al., 1983). In order to clarify this important aspect of the biology of *Leishmania* infections, it is important to consider that cell locomotion involves net protrusion at the front leading edge and retraction at the rear. This process is regulated through the dynamic reorganization of actin

microfilaments and tubulin-based microtubules and involves a number of different factors, including modulation of cell adhesion to the substrate (Rafelski & Theriot, 2004; Worthylake & Burridge, 2001).

The initial response of an isolated cell to a migration stimulus is to polarize and extend membrane protrusions, which define the direction of locomotion. These protrusions are formed as a result of actin polymerization and are stabilized by adhesion to the extracellular matrix—facilitated in many cases through integrin receptors that are linked to the actin cytoskeleton (de Fougères & Kotliansky, 2002; Huttenlocher & Horwitz, 2011; Verkhovskiy et al., 2003). The correct spatial and temporal control of adhesion sites and their disassembly at the leading and trailing edges of cells is critical for efficient cell migration. Thus, modulation of adhesion signaling via integrin receptors and the surrounding extracellular matrix plays an essential role in cell motility (Huvener & Danen, 2009). Upon integrin engagement, intracellular signaling is initiated through focal adhesion kinase (FAK) and Src family kinases, as well as scaffolding molecules such as talin, vinculin, and paxillin. Paxillin is a highly phosphorylated multidomain protein that localizes to focal adhesions through interactions with the cytoplasmic tails of integrins, providing multiple docking sites for an array of signaling and structural proteins. Importantly, paxillin provides a platform for protein tyrosine kinases such as FAK/Pyk2 and Src, which are activated as a result of adhesion or growth factor stimulation. Phosphorylation of paxillin by these activated kinases recruits effector molecules, which transduce external signals into changes in cell motility (Turner, 2000). Thus, paxillin is a key intracellular plasma membrane-associated molecule that coordinates adhesion signaling molecules, actin polymerization and cell migration (Huvener & Danen, 2009; Linder & Aepfelbacher, 2003; Turner, 2000). In this study, we examined the impact of *Leishmania* infection on macrophage motility and found that inhibition of this process is associated with reduced expression of paxillin and other components of the focal adhesion signaling complex and a markedly altered F-actin dynamics in lamellipodia.

2 | RESULTS

2.1 | Infection with *L. amazonensis* inhibits macrophage motility and migration

To evaluate the impact of *L. amazonensis* on the motility and migration of bone marrow-derived macrophages (BMDM), we analyzed their ability to migrate 6, 24, and 48 hr after infection using time-lapse video microscopy. Our real time movies showed that macrophages infected with *L. amazonensis* (identified by red fluorescent protein (RFP) expression) migrate less than uninfected macrophages (Figure 1a,b). Reduction in macrophage motility was observed as soon as 24 hr after infection, before the onset of parasite replication and full expansion of the PV (Figure 1a).

To further examine the migration properties of *L. amazonensis*-infected macrophages, we evaluated their ability to migrate directionally in response to monocyte chemoattractant protein-1 (MCP-1), a key chemokine that regulates migration and infiltration of monocytes and macrophages. Notably, following *L. amazonensis*

infection, macrophages migrated significantly less than uninfected macrophages towards the lower compartment of a Boyden chamber containing MCP-1 (Figure 1c). These findings indicate that *L. amazonensis* intracellular infection interferes with the ability of macrophages to move and directionally migrate.

2.2 | Inhibition of macrophage motility is not dependent on PV expansion, particle load or factors released from infected cells

The modulation of macrophage motility observed in *L. amazonensis*-infected macrophages might be directly induced by the parasites or represent an indirect consequence of other factors that interfere with the migration process. To investigate this issue, we evaluated whether the inhibition of macrophage motility induced by *L. amazonensis* was dependent on mechanical load factors or by molecules released into the medium by infected macrophages. First, we examined if phagocytosis of Zymosan particles (yeast cell wall) affected macrophage motility. The migration speed of macrophages containing or not Zymosan particles was very similar, while infection with *L. amazonensis* under the same conditions showed the expected reduction in motility (Fig. 2a). Zymosan uptake resulted in no reduction in motility even after macrophages were overloaded with the particles, through exposure to high Zymosan/BMDM ratios (results not shown). Next, we compared the motility of *L. amazonensis*-infected macrophages carrying increasing numbers of parasites. Our results suggest that the reduced macrophage motility caused by infection is not due to parasite load, because no significant difference was observed between macrophages infected with one, three or more parasites (Fig. 2b). To verify the influence of possible molecules released into the medium by infected macrophages on macrophage migration, we compared the motility of infected macrophages in a separate culture (control) with infected and noninfected macrophages present in the same culture. The motility of noninfected macrophages was not altered when they were in the vicinity of infected macrophages (Figure 2c). These results strongly support the hypothesis that *Leishmania*-induced inhibition of macrophage motility is not dependent solely on particle load or on soluble factors released from infected cells.

2.3 | Infection with *L. amazonensis* inhibits expression of adhesion complex proteins

We proceeded to investigate the molecular mechanisms involved in the inhibition of macrophage motility induced by *Leishmania*. Substrate adhesion is an important component of motility, required for cells to propel their leading edge forward (Huvener & Danen, 2009). In many cells, adhesion induces FAK autophosphorylation on tyrosine 397, which recruits Src to focal adhesions (Schaller et al., 1994). Subsequent Src-mediated phosphorylation of FAK at Y576/577 renders FAK fully active, followed by FAK–Src complex-mediated phosphorylation of multiple scaffolding and signaling proteins at focal adhesions. An important member of the group of FAK–Src-phosphorylated signaling proteins involved in adhesion dynamics and motility is paxillin, an essential focal adhesion-

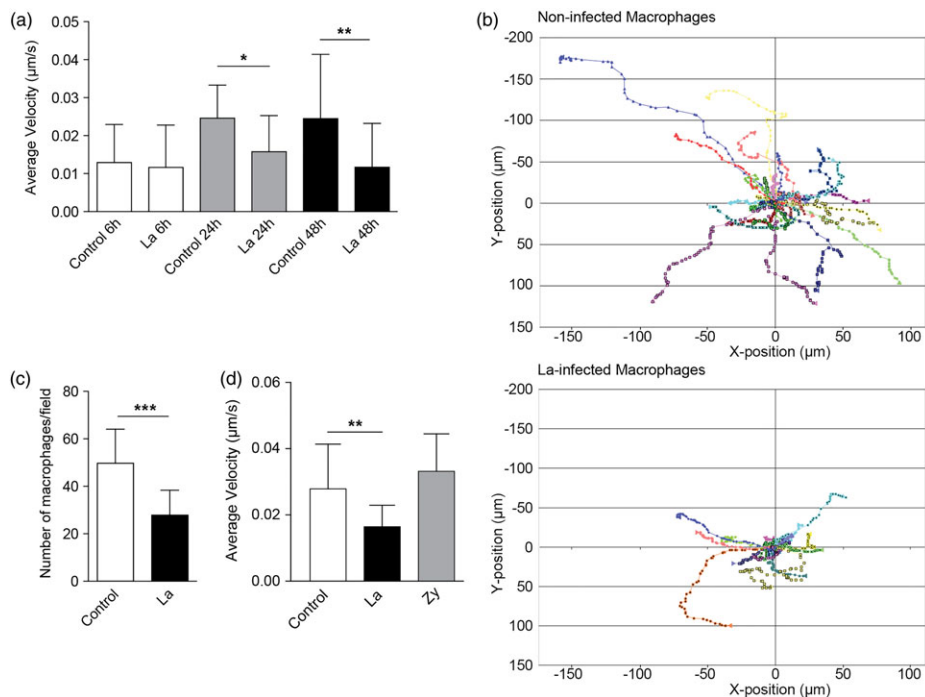


FIGURE 1 *Leishmania amazonensis* infection inhibits macrophage migration. Bone marrow-derived macrophages were infected (La) or not (control) with *L. amazonensis* axenic amastigotes for 1 hr. Bone marrow-derived macrophages were then washed to remove extracellular parasites, cultured at 34°C for another 6, 24, or 48 hr and assayed for their ability to migrate. For the Boyden chamber chemotaxis migration assays, macrophages were cultured at 34°C for another 5 hr. (a) Effect of *L. amazonensis* infection in the migration velocity of macrophages, measured by phase-contrast time-lapse imaging. The data are representative of nine independent experiments. (b) Tracks representing the migration of individual macrophages, noninfected or infected for 48 hr, derived from stacks of confocal images acquired every min for 1 hr. The results of nine independent experiments are shown for each condition. (c) Effect of *L. amazonensis* infection in macrophage migration through a Boyden chamber membrane containing MCP-1 in the lower chamber. The data are representative of three independent experiments. * $p < 0.05$, ** $p < 0.01$, *** $p < 0.001$ (Student's *t* test) compared with noninfected control

associated adaptor protein (Huttenlocher & Horwitz, 2011; Mitra & Schlaepfer, 2006; Playford & Schaller, 2004). In macrophages, substrate adhesion and extracellular matrix remodeling is mediated by podosomes, highly dynamic adhesion structures that share various molecular components with classical focal adhesions, including an intracellular protein complex containing paxillin and FAK family members (Linder & Aepfelbacher, 2003). Thus, to investigate adhesion complexes and their potential role in the reduced motility observed after *Leishmania* infection, we determined paxillin and pFAK levels in *L. amazonensis*-infected macrophages. We found that the total level of paxillin protein and the amount of its active, phosphorylated form was markedly decreased in BMDM infected with *L. amazonensis* (Figure 3a,b,c), and the same was observed with phosphorylated FAK (Figure 3d). Collectively, our findings indicate that *L. amazonensis* infection disrupts FAK and paxillin-dependent formation of adhesion complexes, providing an explanation for the altered macrophage motility.

2.4 | Macrophages infected with *L. amazonensis* show altered actin dynamics at the leading edge

An essential step in cell migration is reorganization of the actin cytoskeleton. Thus, we examined whether the reduction in motility observed after *L. amazonensis* infection was associated with alterations

in actin filament organization and dynamics, by staining infected BMDM with phalloidin that binds to filamentous actin (F-actin) bundles. The phalloidin staining pattern suggested that zones of active actin polymerization were present along the whole circumference of *Leishmania*-infected macrophages, instead of predominantly at the leading edge as seen in uninfected cells (Figure 3e). To understand the dynamic changes in actin polymerization underlying this altered F-actin pattern, we performed live time-lapse fluorescence video microscopy of BMDM isolated from Lifeact mice, which express the 17 amino acid peptide Lifeact fused to EGFP (Riedl et al., 2010), after infection with RFP-expressing *L. amazonensis* amastigotes. In uninfected macrophages, the videos revealed the expected localization of F-actin dynamics to sites of vigorous membrane ruffling, at leading edge protrusions (video S1, Figure 4 control). Infected BMDM, in contrast, showed a significantly less polarized pattern of actin polymerization, with undefined leading edges and a form of oscillating F-actin dynamics on the cell boundaries that was distributed to multiple regions around the whole circumference of *L. amazonensis*-containing macrophages (video S2, Figure 4 *L. amazonensis*). Image analysis was performed to examine actin filament turnover rates on lamellipodia formed at the periphery of infected or noninfected BMDM. Kymograph analysis revealed a markedly altered pattern of multiple actin polymerization regions that alternate in location in infected BMDM, in contrast to the steady, propagating actin polymerization waves formed at the leading edge of uninfected, migrating control

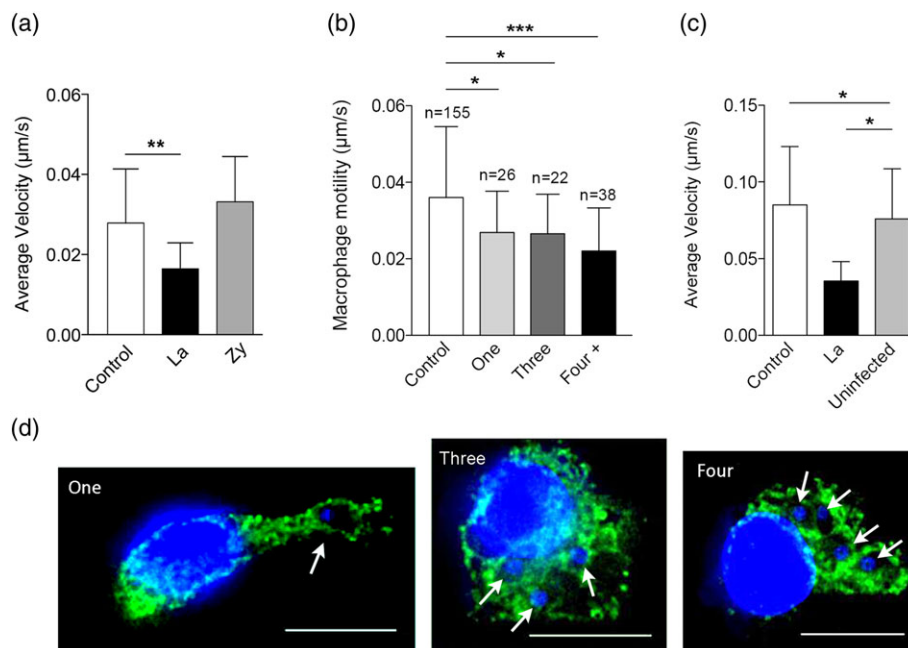


FIGURE 2 Inhibition of macrophage motility induced by *Leishmania amazonensis* is not dependent on parasitophorous vacuoles expansion, parasite load, or secreted factors. Bone marrow-derived macrophages (BMDM) were exposed or not to *L. amazonensis* axenic amastigotes or to Zymosan particles for 1 hr. BMDM were washed to remove extracellular parasites or particles, cultured at 34°C for another 24 or 48 hr and assayed for their ability to migrate using phase-contrast time-lapse imaging. (a) Velocity of macrophages 48 h after internalization of *L. amazonensis* (La) or Zymosan particles (Zy). Data are representative of three independent experiments. (b) Velocity of macrophages infected with *L. amazonensis* axenic amastigotes for 48 h carrying one, three, or more parasites. Data are representative of eight independent experiments. (c) Effect of factors released into the medium by BMDM infected with *L. amazonensis* axenic amastigotes on macrophage motility 24 hr after infection. Macrophage velocity was determined in noninfected macrophages in a separate culture (control) and in *L. amazonensis*-infected (La) and noninfected macrophages (uninfected) in the same culture. Data are representative of two independent experiments. (d) Images illustrating macrophages infected with one, three, or four *L. amazonensis* axenic amastigotes for 48 hr. Green, anti-Lamp1 antibodies; blue, DAPI DNA stain. Bars: 11 µm. * $p < 0.05$, ** $p < 0.01$, *** $p < 0.001$ (Student's *t* test) compared with noninfected control BMDM

macrophages (Figure 5a). Shape analysis showed significantly more circular actin polymerization features in *L. amazonensis*-infected macrophages, versus excentric actin polymerization features, located along the membrane, in control macrophages (Figure 5b,c). These results indicate that mouse macrophages infected with *L. amazonensis* have a significantly higher frequency of formation and turnover of the F-actin cytoskeleton when compared to noninfected macrophages.

3 | DISCUSSION

Using time-lapse video microscopy and image analysis as major experimental tools, we found that infection with *L. amazonensis* parasites reduces the motility of mouse macrophages, during random roaming and also directional migration driven by chemotaxis. Investigating the molecular mechanisms responsible for this effect, our study revealed a significant parasite-induced reduction in phosphorylated FAK and paxillin, components of key adhesion signaling complexes that control the ability of migrating cells to form adequate substrate anchorage, which is often important for propulsion of the leading edge (Blanchoin, Boujemaa-Paterski, Sykes, & Plastino, 2014; Huttenlocher & Horwitz, 2011). These changes were associated with marked changes in the dynamics of F-actin waves on lamellipodia, which we defined through quantitative analysis of shape dynamics.

Although the underlying molecular mechanisms involved were not elucidated, an earlier study reported reduced migration of

macrophages infected with *Leishmania mexicana mexicana*, in good agreement with our results using *L. amazonensis* (Bray et al., 1983). That study reported no changes in phagocytosis or lysosomal enzyme secretion in response to stimuli but interestingly found that infection enhanced macrophage pinocytosis and bactericidal ability (Bray et al., 1983). Also, consistent with our findings, *L. amazonensis* infection was reported to reduce the adherence of mouse peritoneal macrophages or human peripheral blood monocytes to inflamed connective tissue (Carvalho et al., 2004; Pinheiro et al., 2006). In a careful quantitative study, the same laboratory examined the effect of infection with *L. amazonensis* on the spreading of human monocytes on fibronectin-coated surfaces mediated by VLA-4, a $\beta 1$ integrin involved in leukocyte adhesion to fibronectin and found that infection shifted the median spreading area from 72 µm² to just 41 µm² (Figueira et al., 2015). Although macrophage motility was not examined in those studies, the authors suggested that the observed reduced substrate adherence could result in enhanced migration of the host cells, influencing parasite dissemination in vivo. Our study suggests that *L. amazonensis* infection may actually impair the ability of macrophages to leave sites of infection, consistent with the cutaneous and predominantly localized pattern of *L. amazonensis* lesions (McMahon-Pratt & Alexander, 2004). Reduced migration of infected dendritic cells is also likely to have an important impact on immune responses to *Leishmania*, and this possibility is emphasized by a recent study showing that *L. amazonensis* infection inhibits the migration of dendritic cells from inflammatory

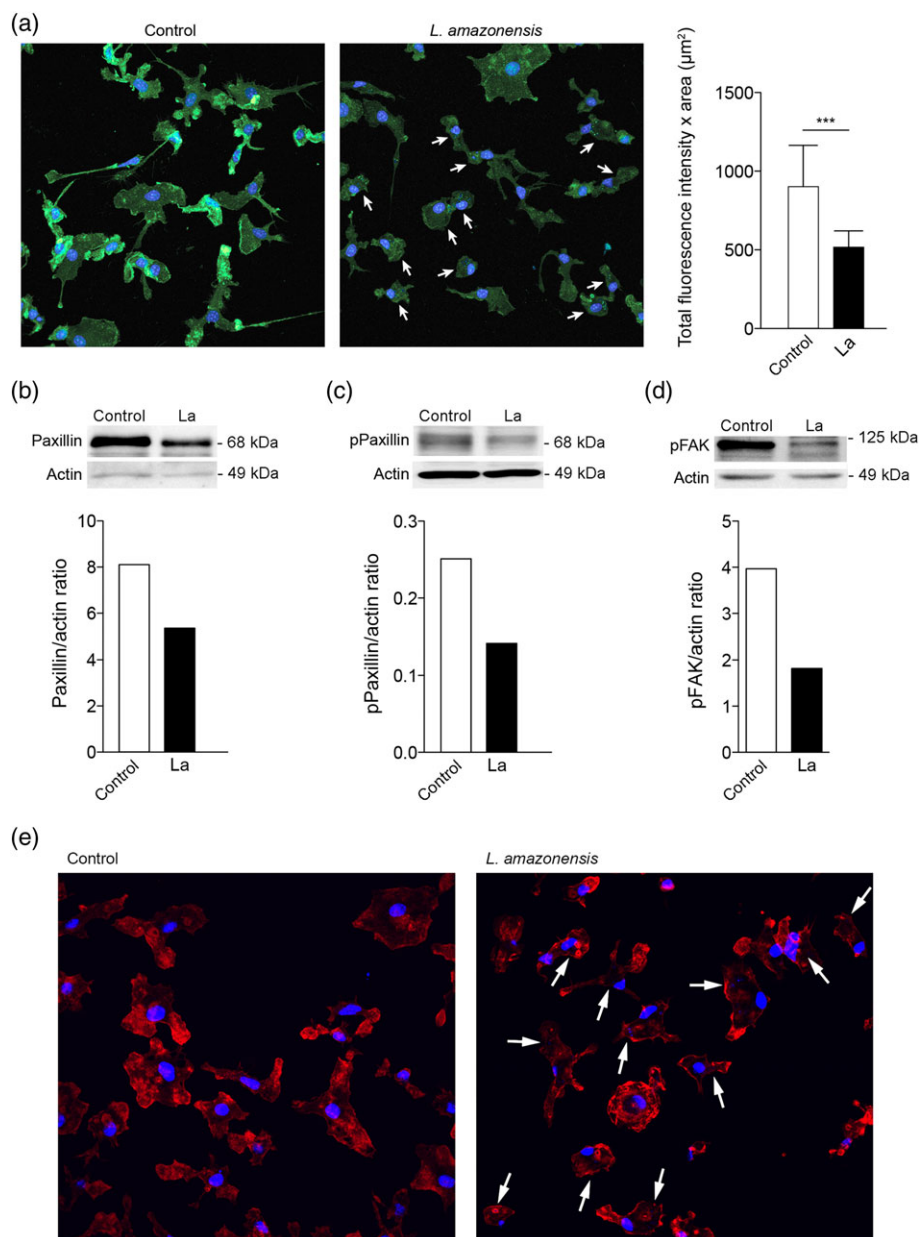


FIGURE 3 Infection with *Leishmania amazonensis* disrupts paxillin-dependent adhesion complex formation. (a) Effect of *L. amazonensis* infection on phosphorylated paxillin protein levels. Bone marrow-derived macrophages (BMDM) were infected or not with *L. amazonensis* axenic amastigotes for 1 hr. BMDM were washed to remove extracellular parasites, cultured at 34°C for another 24 hr, fixed, and stained with anti-phosphorylated paxillin antibodies. The arrows point to *L. amazonensis*-infected BMDM. On the right is shown the fluorescence intensity from 40 cells for each group quantified using Volocity software. ***, $p < 0.001$ (Student's *t* test) compared with noninfected control. Bar: 30 μm . (b) Effect of *L. amazonensis* infection on total paxillin protein levels. BMDM were infected or not with axenic *L. amazonensis* amastigotes (La) for 1 hr, washed and cultured at 34°C for another 24 hr, followed by quantification of total paxillin by Western blot. Anti-actin antibodies were used as loading controls. Phospho-paxillin/actin ratios were determined by densitometry. (c) Effect of *L. amazonensis* infection on phosphorylated paxillin protein levels. BMDM were infected or not with axenic *L. amazonensis* amastigotes (La) for 1 hr, washed and cultured at 34°C for another 24 hr, followed by quantification by Western blot with anti-phospho-paxillin antibodies. Anti-actin antibodies were used as loading controls. Phospho-paxillin/actin ratios were determined by densitometry. (d) Effect of *L. amazonensis* infection on phosphorylated FAK protein levels. BMDM were infected or not with axenic *L. amazonensis* amastigotes (La) for 1 hr, washed and cultured at 34°C for another 24 hr, followed by quantification by Western Blot with anti-phospho-FAK antibodies. Anti-actin antibodies were used as loading controls. Phospho-FAK/actin ratios were determined by densitometry. The results shown in a–d are representative of three independent experiments. (e) BMDM were infected or not with axenic *L. amazonensis* amastigotes (La) for 1 hr, washed and cultured at 34°C for another 24 hr, followed by staining with phalloidin. The arrows point to *L. amazonensis*-infected BMDM. The images shown are representative of two independent experiments

sites to draining lymph nodes (Hermida, Doria, Taguchi, Mengel, & dos-Santos, 2014).

Actin polymerization alone is known to generate forces that are sufficient to drive protrusions at the leading edge of migrating cells

(Keren et al., 2008; Mitchison & Cramer, 1996; Prass, Jacobson, Mogilner, & Radmacher, 2006; Rottner & Stradal, 2011). The role of cortical actin dynamics in cell migration on flat substrates has been a subject of intense investigation (Blanchoin et al., 2014), and recent

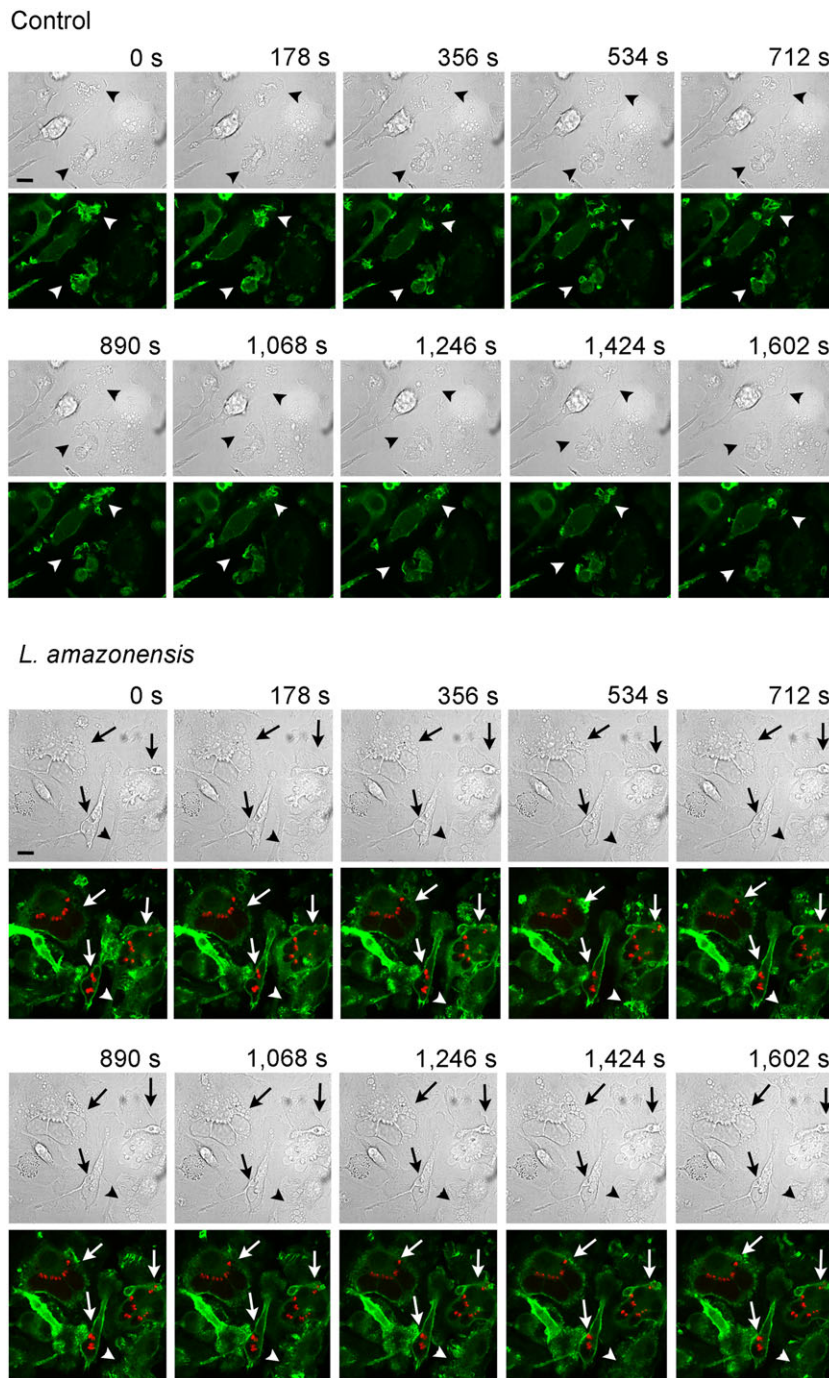


FIGURE 4 Differential actin filament dynamics during migration of macrophages infected with *Leishmania amazonensis*. Bone marrow-derived macrophages from Lifeact mice were infected or not (control) with *L. amazonensis* axenic amastigotes for 1 hr. Bone marrow-derived macrophages were then washed to remove extracellular parasites, cultured at 34°C for another 24 hr, followed by fluorescence time-lapse image acquisition for 26.7 min. Arrowheads: F-actin (green) dynamics at ruffling leading edges of macrophages. Arrows: infected macrophages showing altered F-actin propagating waves at cell boundaries. Bars: 10 μ m. See supplemental videos

studies found that fluorescent signals from the plasma membrane and the F-actin cortical cytoskeleton are highly correlated in all stages of cell protrusion and actin wave propagation (Driscoll, Losert, Jacobson, & Kapustina, 2015; Kapustina, Elston, & Jacobson, 2013). Our data showing reduction in the phosphorylated forms of FAK and paxilin suggest that *L. amazonensis* infection may impair the formation of adhesion signaling complexes at focal adhesions/podosomes on the plasma membrane, an effect likely to influence the dynamic changes that we observed in the cortical actin cytoskeleton (Gardel, Schneider, Aratyn-Schaus, & Waterman, 2010). Although additional studies are needed to strengthen this hypothesis, *Leishmania*-mediated impairment of adhesion complexes is supported by prior studies that specifically examined the substrate adhesion properties of mouse and human macrophages and detected a marked inhibition after infection with

L. amazonensis (Carvalho et al., 2004; Figueira et al., 2015). Thus, with this study, we advance the current understanding of the molecular mechanism underlying the reduced motility of *Leishmania*-infected macrophages, paving the way for future identification of the parasite factors that mediate this process.

4 | EXPERIMENTAL PROCEDURES

4.1 | Ethics statement

All animal work was conducted according to the National Institutes of Health guidelines for the housing and care of laboratory animals and performed under protocol # R-11-73 approved by the University of

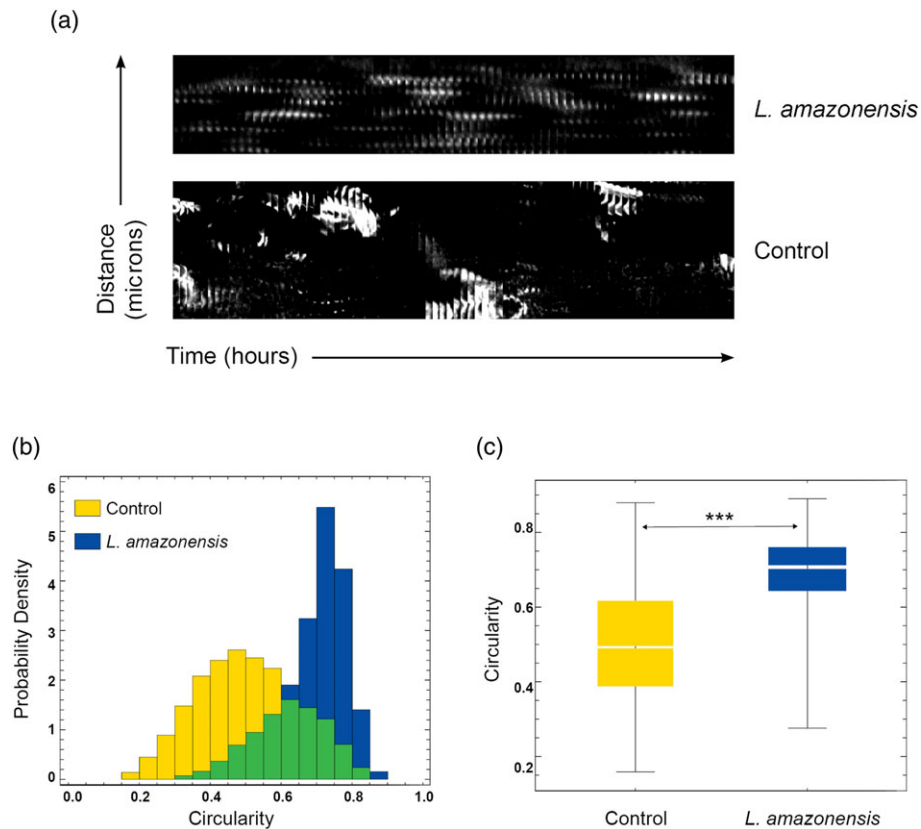


FIGURE 5 Actin filament dynamic properties are markedly altered in macrophages infected with *Leishmania amazonensis*. Bone marrow-derived macrophages from Lifeact mice were infected or not with *L. amazonensis* axenic amastigotes for 1 hr. Bone marrow-derived macrophages were then washed to remove extracellular parasites, cultured at 34°C for another 24 hr, followed by fluorescence time-lapse image acquisition. (a) Space/time plot of an actin propagating wave at the lamellipodia front over 200 frames indicating oscillating dotted actin polymerization waves in infected macrophages versus a propagating steady membrane wave front in an actively migrating control macrophage. The results shown are representative of four noninfected macrophages and five infected individual macrophages analyzed. (b) Shape dynamic analysis showing circular actin shape-like features in 25 infected macrophages versus line-like steady actin membranous features in 25 control macrophages. (c) Statistical analysis of the data in (b) indicating that infected macrophages show significantly more circular shape features compared to control macrophages. The boxes show the 50% confidence region from the median (black line). The bars cover a region with 99% confidence level from the median. *** $p < .01$, $n = 25$. The results shown are representative of two independent experiments

Maryland College Park Institutional Animal Care and Use Committee. The University of Maryland at College Park is a fully AAALAC-accredited institution.

4.2 | *Leishmania* parasites

Wild-type *L. amazonensis* (IFLA/BR/67/PH8 strain, expressing or not RFP) promastigotes were maintained in vitro at 26°C in M199 (Invitrogen), 40 mM HEPES, pH 7.4, 20% heat-inactivated FBS, 5% penicillin/streptomycin, 0.1% hemin (from a 25 mg/ml stock in 50% triethanolamine), 10 mM adenine, and 5 mM l-glutamine. To obtain *L. amazonensis* axenic amastigotes, stationary phase cultures rich in metacyclic promastigotes were incubated at 32°C in acidified media, as previously described (Flannery, Huynh, Mitra, Mortara, & Andrews, 2011), resuspended in BMDM medium and added to BMDM at a MOI = 5.

4.3 | Mouse bone marrow macrophages (bone marrow-derived macrophages)

Bone marrow-derived macrophages obtained from WT C57Bl/6 mice (The Jackson Laboratory) or Lifeact C57Bl/6 mice (expressing the 17

amino acid peptide Lifeact that specifically labels F-actin fused to EGFP (Riedl et al., 2010)) were cultured in RPMI 1640 containing 20% heat-inactivated endotoxin-free FBS, 100 units/ml penicillin and 100 µg/ml streptomycin and 50 ng/ml human Recombinant M-CSF (Peprotech). Mature, adherent BMDM were detached from dishes with PBS/1 mM EDTA, viability was determined with a trypan-blue exclusion test and incubated overnight at 37°C in a 5% CO₂ incubator prior to use in experiments.

4.4 | Bone marrow-derived macrophages infection

A total of 2×10^5 BMDMs were plated on Mattek dishes for motility experiments 24 hr prior to experiments and on transwell plates for migration assays 5 hr prior to experiments. To obtain protein extracts and for immunofluorescence assays, a total of 2×10^6 BMDMs per well were plated on a 6-well plate 24 hr prior to experiments. *L. amazonensis* axenic amastigotes were added to BMDM for 1 hr at 34°C at a MOI = 5, washed in PBS to remove non-internalized parasites and reincubated for 24 or 48 hr at 34°C, for the motility experiments and for western blot experiments.

4.5 | Zymosan phagocytosis

Bone marrow-derived macrophages plated as described above were incubated with Zymosan A from *Saccharomyces cerevisiae* (Sigma-Aldrich) at a ratio of 5,10, and 20 particles per BMDM for 1 hr at 34°C, washed in PBS to remove non-internalized particles and reincubated for 48 hr prior to the motility analysis.

4.6 | Cell motility

Time-lapse imaging of macrophages was carried out using an UltraView Vox spinning disk confocal system (Perkin Elmer) equipped with an incubation chamber where cells were kept at 37°C in 5% CO₂ atmosphere. Phase-contrast time-lapse images were acquired every minute for 1 hr using a 10× objective lens. Movements of individual cells were traced on the acquired digital images by tracking the position of cell nuclei using Volocity software. The velocity of each cell was calculated using Volocity software and results expressed as the mean of at least 10 cells per group.

4.7 | Macrophage migration

Chemotaxis was assayed in Boyden chambers with polycarbonate membranes (12 well, 5- μ m pores, Corning® Transwell® polycarbonate membrane cell culture inserts). Macrophages were starved in serum-free RPMI 1640 medium overnight and then seeded at a concentration of 2×10^5 macrophages per transwell insert in serum-free RPMI 1640 medium. After 1 hr of incubation at 37°C, macrophages were infected with *L. amazonensis* axenic amastigotes for 1 hr, washed and allowed to migrate toward RPMI containing 100 ng/ml MCP-1 in the lower compartment for 5 hr. The membranes were washed three times with PBS, fixed with 4% paraformaldehyde for 10 min, washed twice with PBS and incubated with 10 mg/ml DAPI for nuclear staining. The upper side of the filter was scrapped to remove residual non-migrating macrophages. Fifteen random fields were counted per well on the bottom side of the filter using a fluorescence microscope. The number of uninfected macrophages migrating to the lower chamber was compared with that of macrophages infected with *L. amazonensis* axenic amastigotes.

4.8 | Immunofluorescence

Macrophages infected or not with *L. amazonensis* axenic amastigotes were fixed with 4% paraformaldehyde for 15 min, washed with PBS three times and quenched with 15 mM NH₄Cl for 20 min. Coverslips were washed three times with PBS, incubated in blocking solution (3% bovine serum albumin [BSA] in PBS) for 1 hr, washed three times with PBS, permeabilized with 0.15% saponin-PBS for 15 min and incubated with 1:200 rabbit anti-paxillin (pY¹¹⁸) (Invitrogen) or 1:500 anti-Lamp1 hybridoma supernatant (1D4B, Developmental Studies Hybridoma Bank) diluted in PBS 1% BSA 0.15% saponin for 1 hr. This was followed by incubation with anti-rabbit or anti-rat IgG Alexa Fluor 488 for 1 hr, 10 mg/ml DAPI for nuclear staining, and mounting with ProLong Gold antifade reagent (Invitrogen). Secondary antibodies were purchased from Molecular Probes. Images were acquired through a Leica SPX5 confocal microscope using a 63×/1.4 objective and processed using Volocity Software (PerkinElmer).

4.9 | Protein extraction and Western blot

Macrophages infected or not with *L. amazonensis* axenic amastigotes were washed twice with cold PBS, scraped from the dish, collected by centrifugation (335 g) for 10 min at 4°C, lysed in 30 μ l RIPA buffer (50 mM Tris-HCl, pH 8.0, 150 mM NaCl, 1% Nonidet P-40, 0.50% sodium deoxycholate, 0.10% SDS) with protease inhibitors (Roche), and centrifuged at 14,000 g for 15 min at 4°C to remove insoluble material. Lysates were assayed for protein content (Pierce BSA Protein Assay kit), 60 μ g per sample were mixed with SDS sample buffer at room temperature for 30 min, separated by SDS-PAGE (without sample boiling) and transferred to a PVDF membrane (Millipore). Membranes were incubated overnight with 1:10,000 mouse anti-paxillin antibody (BD Transduction Laboratories), 1:1,000 rabbit anti-paxillin (pY¹¹⁸) (Invitrogen), 1:1,000 rabbit anti-FAK (pY³⁹⁷) (Abcam) or 1:5,000 anti-actin (Sigma-Aldrich) in blocking buffer (PBS 3% milk, 0.1% Tween), followed by horseradish peroxidase (HRP)-coupled anti-rabbit IgG or anti mouse IgG secondary antibodies (Amersham Biosciences). Blots were developed using Immuno-Star HRP Luminol Enhancer and peroxidase buffer (Bio-Rad) and detected with a Fuji LAS-3000 Imaging System and Image Reader LAS-3000 software. Digital quantifications of chemiluminescence were performed using Image J software.

4.10 | Actin dynamics videos, kymograph analysis, and shape dynamics analysis

Time-lapse imaging of Lifeact C57Bl/6 mouse macrophages infected or not with *L. amazonensis* axenic amastigotes was carried out using an UltraView Vox spinning disk confocal system (Perkin Elmer) equipped with an incubator chamber to maintain constant temperature and CO₂ levels. Fluorescence images were acquired every 15 s for 30 min using a 60× objective lens. The actin wave propagation speed in infected and control macrophages was measured using space/time plots (Driscoll, Sun, Guven, Fourkas, & Losert, 2014, Driscoll et al., 2015). Actin waves near the lamellipodia were cropped and resized into a single-pixel width using ImageJ software (NIH). The same processing was repeated on every cropped image in the time-lapse series. The resized actin waves were also montaged into a space/time plot. Actin wave propagation speed was obtained by dividing the distance that the wave front traveled by the time lapse. The circularity and the line shape features were quantified using the Matlab function Region Props to obtain area and perimeter values and the circularity formula $4\pi \cdot \text{area} / (\text{perimeter})^2$. Probability density function was then computed in order to show the relative strength of the circularity feature that is observed in the infected cells. The box plot was assembled from data of several different cells ($n = 25$).

5 | STATISTICAL ANALYSIS

Data were analyzed by two-tailed Student's *t* test using GraphPad Prism software. A result was considered significant at a *p* value of $p < 0.05$.

ACKNOWLEDGMENTS

We thank A. Beaven (University of Maryland) and the Department of Cell Biology and Molecular Genetics Imaging Core for assistance with confocal microscopy, Drs. W. Song and H. Miller (U. Maryland) for Lifeact mice, Dr. Matthias Corrotte for help with video assembly, and members of the Andrews laboratory for helpful discussions. This work was supported by National Institutes of Health grant R01 AI67979 to NWA. WL and SD were supported by National Institutes of Health grant R01 GM085574. JPBN was supported by a Ciências sem Fronteiras fellowship (CNPq).

REFERENCES

- Antoine, J. C., Prina, E., Lang, T., & Courret, N. (1998). The biogenesis and properties of the parasitophorous vacuoles that harbour *Leishmania* in murine macrophages. *Trends in Microbiology*, 6, 392–401.
- Blanchoin, L., Boujemaa-Paterski, R., Sykes, C., & Plastino, J. (2014). Actin dynamics, architecture, and mechanics in cell motility. *Physiological Reviews*, 94, 235–263.
- Bray, R. S., Heikal, B., Kaye, P. M., & Bray, M. A. (1983). The effect of parasitization by *Leishmania mexicana mexicana* on macrophage function in vitro. *Acta Tropica*, 40, 29–38.
- Carvalho, D. G., Barbosa, A. Jr., D'El-Rei Hermida, M., Clarencio, J., Pinheiro, N. F. Jr., Veras, P. S., & dos-Santos, W. L. (2004). The modeling of mononuclear phagocyte-connective tissue adhesion in vitro: Application to disclose a specific inhibitory effect of *Leishmania* infection. *Experimental Parasitology*, 107, 189–199.
- De Almeida, M. C., Cardoso, S. A., & Barral-Netto, M. (2003). *Leishmania* (*Leishmania*) *chagasi* infection alters the expression of cell adhesion and costimulatory molecules on human monocyte and macrophage. *International Journal for Parasitology*, 33, 153–162.
- de Fougerolles, A. R., & Kotliansky, V. E. (2002). Regulation of monocyte gene expression by the extracellular matrix and its functional implications. *Immunological Reviews*, 186, 208–220.
- Driscoll, M. K., Sun, X., Guven, C., Fourkas, J. T., & Losert, W. (2014). Cellular contact guidance through dynamic sensing of nanotopography. *ACS Nano*, 8, 3546–3555.
- Driscoll, M. K., Losert, W., Jacobson, K., & Kapustina, M. (2015). Spatiotemporal relationships between the cell shape and the actomyosin cortex of periodically protruding cells. *Cytoskeleton*, 72, 268–281.
- Figueira, C. P., Carvalho, D. G., Almeida, R. A., Hermida, M., Touchard, D., Robert, P., ... dos-Santos, W. L. (2015). *Leishmania* infection modulates beta-1 integrin activation and alters the kinetics of monocyte spreading over fibronectin. *Scientific Reports*, 5, 12862.
- Flannery, A. R., Huynh, C., Mittra, B., Mortara, R. A., & Andrews, N. W. (2011). LFR1 ferric iron reductase of *Leishmania amazonensis* is essential for the generation of infective parasite forms. *The Journal of Biological Chemistry*, 286, 23266–23279.
- Gardel, M. L., Schneider, I. C., Aratyn-Schaus, Y., & Waterman, C. M. (2010). Mechanical integration of actin and adhesion dynamics in cell migration. *Annual Review of Cell and Developmental Biology*, 26, 315–333.
- Hermida, M. D., Doria, P. G., Taguchi, A. M., Mengel, J. O., & dos-Santos, W. (2014). *Leishmania amazonensis* infection impairs dendritic cell migration from the inflammatory site to the draining lymph node. *BMC Infectious Diseases*, 14, 450.
- Huttenlocher, A., & Horwitz, A. R. (2011). Integrins in cell migration. *Cold Spring Harbor Perspectives in Biology*, 3, a005074.
- Huvneers, S., & Danen, E. H. (2009). Adhesion signaling—crosstalk between integrins, Src and Rho. *Journal of Cell Science*, 122, 1059–1069.
- Kapustina, M., Elston, T. C., & Jacobson, K. (2013). Compression and dilation of the membrane-cortex layer generates rapid changes in cell shape. *The Journal of Cell Biology*, 200, 95–108.
- Keren, K., Pincus, Z., Allen, G. M., Barnhart, E. L., Marriott, G., Mogilner, A., & Theriot, J. A. (2008). Mechanism of shape determination in motile cells. *Nature*, 453, 475–480.
- Liarte, D. B., Mendonca, I. L., Luz, F. C., Abreu, E. A., Mello, G. W., Farias, T. J., ... Costa, C. H. (2001). QBC for the diagnosis of human and canine american visceral leishmaniasis: Preliminary data. *Revista da Sociedade Brasileira de Medicina Tropical*, 34, 577–581.
- Liew, F. Y., & O'Donnell, C. A. (1993). Immunology of Leishmaniasis. *Advances in Parasitology*, 32, 161–259.
- Linder, S., & Aepfelbacher, M. (2003). Podosomes: Adhesion hot-spots of invasive cells. *Trends in Cell Biology*, 13, 376–385.
- McMahon-Pratt, D., & Alexander, J. (2004). Does the *Leishmania* major paradigm of pathogenesis and protection hold for New World cutaneous leishmaniasis or the visceral disease? *Immunological Reviews*, 201, 206–224.
- Mitchison, T. J., & Cramer, L. P. (1996). Actin-based cell motility and cell locomotion. *Cell*, 84, 371–379.
- Mitra, S. K., & Schlaepfer, D. D. (2006). Integrin-regulated FAK-Src signaling in normal and cancer cells. *Current Opinion in Cell Biology*, 18, 516–523.
- Pinheiro, N.F., Jr., Hermida, M.D., Macedo, M.P., Mengel, J., Bafica, A. and dos-Santos, W.L. (2006). *Leishmania* infection impairs beta 1-integrin function and chemokine receptor expression in mononuclear phagocytes. *Infection and Immunity* 74, 3912–3921.
- Playford, M. P., & Schaller, M. D. (2004). The interplay between Src and integrins in normal and tumor biology. *Oncogene*, 23, 7928–7946.
- Prass, M., Jacobson, K., Mogilner, A., & Radmacher, M. (2006). Direct measurement of the lamellipodial protrusive force in a migrating cell. *The Journal of Cell Biology*, 174, 767–772.
- Rafelski, S. M., & Theriot, J. A. (2004). Crawling toward a unified model of cell mobility: Spatial and temporal regulation of actin dynamics. *Annual Review of Biochemistry*, 73, 209–239.
- Riedl, J., Flynn, K. C., Raducanu, A., Gartner, F., Beck, G., Bosl, M., ... Wedlich-Söldner, R. (2010). Lifeact mice for studying F-actin dynamics. *Nature Methods*, 7, 168–169.
- Rottner, K., & Stradal, T. E. (2011). Actin dynamics and turnover in cell motility. *Current Opinion in Cell Biology*, 23, 569–578.
- Schaller, M. D., Hildebrand, J. D., Shannon, J. D., Fox, J. W., Vines, R. R., & Parsons, J. T. (1994). Autophosphorylation of the focal adhesion kinase, pp125FAK, directs SH2-dependent binding of pp60src. *Molecular and Cellular Biology*, 14, 1680–1688.
- Turner, C. E. (2000). Paxillin interactions. *Journal of Cell Science*, 113(Pt 23), 4139–4140.
- Verkhovskiy, A. B., Chaga, O. Y., Schaub, S., Svitkina, T. M., Meister, J. J., & Borisy, G. G. (2003). Orientational order of the lamellipodial actin network as demonstrated in living motile cells. *Molecular Biology of the Cell*, 14, 4667–4675.
- Worthylake, R. A., & Burridge, K. (2001). Leukocyte transendothelial migration: Orchestrating the underlying molecular machinery. *Current Opinion in Cell Biology*, 13, 569–577.

SUPPORTING INFORMATION

Additional Supporting Information may be found online in the supporting information tab for this article.

How to cite this article: de Menezes JPB, Koushik A, Das S, et al. *Leishmania* infection inhibits macrophage motility by altering F-actin dynamics and the expression of adhesion complex proteins. *Cell. Microbiol.* 2017;19:e12668. <https://doi.org/10.1111/cmi.12668>