



Unbalanced production of LTB₄/PGE₂ driven by diabetes increases susceptibility to cutaneous leishmaniasis

Icaro Bonyek-Silva , Sara Nunes , Reinan L. Santos , Filipe R. Lima ,
Alexsandro Lago , Juliana Silva , Lucas P. Carvalho , Sergio M. Arruda ,
Henrique C. Serezani , Edgar M. Carvalho , Claudia I. Brodskyn & Natalia M.
Tavares

To cite this article: Icaro Bonyek-Silva , Sara Nunes , Reinan L. Santos , Filipe R. Lima ,
Alexsandro Lago , Juliana Silva , Lucas P. Carvalho , Sergio M. Arruda , Henrique C. Serezani ,
Edgar M. Carvalho , Claudia I. Brodskyn & Natalia M. Tavares (2020) Unbalanced production
of LTB₄/PGE₂ driven by diabetes increases susceptibility to cutaneous leishmaniasis, Emerging
Microbes & Infections, 9:1, 1275-1286, DOI: [10.1080/22221751.2020.1773744](https://doi.org/10.1080/22221751.2020.1773744)

To link to this article: <https://doi.org/10.1080/22221751.2020.1773744>



© 2020 The Author(s). Published by Informa UK Limited, trading as Taylor & Francis Group, on behalf of Shanghai Shangyixun Cultural Communication Co., Ltd



Published online: 11 Jun 2020.



Submit your article to this journal [↗](#)



Article views: 620



View related articles [↗](#)



View Crossmark data [↗](#)

Unbalanced production of LTB₄/PGE₂ driven by diabetes increases susceptibility to cutaneous leishmaniasis

Icaro Bonyek-Silva^{a,b}, Sara Nunes^{a,b}, Reinan L. Santos^{a,b}, Filipe R. Lima^{a,b}, Alexsandro Lago^b, Juliana Silva^b, Lucas P. Carvalho^{a,b}, Sergio M. Arruda^{a,b}, Henrique C. Serezani^c, Edgar M. Carvalho^{a,b,d}, Claudia I. Brodskyn^{a,b,e} and Natalia M. Tavares^{a,b,e}

^aGonçalo Moniz Institute, Oswaldo Cruz Foundation (FIOCRUZ), Salvador, Brazil; ^bFederal University of Bahia (UFBA), Salvador, Brazil; ^cDivision of Infectious Diseases, Department of Medicine, Vanderbilt University Medical Center, Nashville, TN, USA; ^dNational Institute of Science and Technology (INCT) in Tropical Diseases, Salvador, Brazil; ^eNational Institute of Science and Technology (INCT), Institute of Investigation in Immunology (iii), São Paulo, Brazil

ABSTRACT

Poorly controlled diabetes mellitus leads to several comorbidities, including susceptibility to infections. Hyperglycemia increases phagocyte responsiveness, however immune cells from people with diabetes show inadequate antimicrobial functions. We and others have shown that aberrant production of leukotriene B₄ (LTB₄) is detrimental to host defense in models of bacterial infection. Here, we will unveil the consequences of high glucose in the outcome of *Leishmania braziliensis* skin infection in people with diabetes and determine the role of LTB₄ in human phagocytes. We show that diabetes leads to higher systemic levels of LTB₄, IL-6 and TNF-α in cutaneous leishmaniasis. Only LTB₄ correlated with blood glucose levels and healing time in diabetes comorbidity. Skin lesions of people with leishmaniasis and diabetes exhibit increased neutrophil and amastigote numbers. Monocyte-derived macrophages from these individuals showed higher *L. braziliensis* loads, reduced production of Reactive Oxygen Species and unbalanced LTB₄/PGE₂ ratio. Our data reveal a systemic inflammation driven by diabetes comorbidity in opposition to a local reduced capacity to resolve *L. braziliensis* infection and a worse disease outcome.

ARTICLE HISTORY Received 24 March 2020; Revised 19 May 2020; Accepted 20 May 2020

KEYWORDS Diabetes; human leishmaniasis; *Leishmania braziliensis*; lipid mediators; LTB₄; PGE₂



Introduction

Diabetes mellitus is a metabolic disorder characterized by hyperglycemia, which occurs when insulin is not produced (Type 1) or inefficiently recognized (Type 2) [1,2]. Both types of diabetes are associated with secondary complications, such as cardiovascular diseases, retinopathy, nephropathy, neuropathy, reduced wound healing and increased susceptibility to infections, particularly in the skin [1–7]. The recent increase in the burden of diabetes [8,9] and reports of abnormal cases of cutaneous leishmaniasis (CL) in individuals with diabetes [10,11] led us to investigate the consequences of association of these diseases. The main goal of this study is to evaluate the influence of diabetes and its inflammatory mediators in the outcome of *Leishmania braziliensis* skin infection.

Hyperglycemia is thought to cause a state called sterile inflammation, characterized by a low-grade inflammatory response [12]. Although inflammation is crucial to clear pathogens and to induce tissue repair, chronic and sustained inflammatory responses cause

tissue damage, leading to immunopathology and worse disease outcome. The tissue damage results from increased production of TNF-α, Interleukin-1β, metalloproteases and recently, we have shown that lipid mediators, such as leukotrienes (LTB₄), when produced in abundance, increases susceptibility to skin infection in experimental models of diabetes [13–15]. These inflammatory mediators are also involved in CL caused by *Leishmania braziliensis*, the causative agent of CL in Brazil, resulting in skin ulcerative lesions [16]. Histological analysis of CL ulcers revealed rare presence of parasites and an intense inflammatory infiltrate, which can lead to a delayed healing process and chronic lesions [17]. In this context, we and others also have shown the participation of lipid inflammatory mediators, including LTB₄ and Prostaglandin E₂ (PGE₂) in phagocyte antimicrobial effector functions upon infection of different pathogens, including *Leishmania* spp. [18–21].

Lipid mediators are produced from the metabolism of arachidonic acid (AA) present in the cell membrane

CONTACT Natalia M. Tavares  natalia.tavares@fiocruz.br  Oswaldo Cruz Foundation, Gonçalo Moniz Institute, LaIPHE, Rua Waldemar Falcão, 121, Candeal - Salvador, BA, Brazil

 Supplemental data for this article can be accessed <https://doi.org/10.1080/22221751.2020.1773744>

© 2020 The Author(s). Published by Informa UK Limited, trading as Taylor & Francis Group, on behalf of Shanghai Shangyixun Cultural Communication Co., Ltd This is an Open Access article distributed under the terms of the Creative Commons Attribution License (<http://creativecommons.org/licenses/by/4.0/>), which permits unrestricted use, distribution, and reproduction in any medium, provided the original work is properly cited.

in response to several stimuli, such as antigens, microbes, cytokines and osmotic challenge [22]. After AA metabolism, leukotrienes (LTs) and prostaglandins (PGs) are produced from lipoxygenase (LO) or cyclooxygenase (COX), respectively [22,23]. Recognition of LTB_4 through its cognate receptor Type 1 (BLT1) enhances antimicrobial effector functions and production of cytokines in phagocytic cells [22,24]. Moreover, LTB_4 acts as a phagocyte chemoattractant and a trigger of chronic inflammation [24,25]. However, when produced in high amounts, LTB_4 can be detrimental to host defense [15]. We and others have shown that aberrant LTB_4 production also exacerbate the inflammatory response, promote insulin resistance and delays skin wound healing [13,14,26].

On the other hand, PG elicits a wide range of biological effects associated with inflammation [23]. The synthesis of PGE_2 is upregulated and it may signal through four different primary receptors. The concentrations of PGE_2 and specific receptor signaling are crucial to induce proinflammatory or regulatory immune responses [23]. Several studies showed that PGE_2 impairs the function of innate phagocytes, rendering the host more susceptible to bacterial, fungal, viral infections and protozoan parasites [20,27–29]. Regarding parasite infections, PGE_2 has been implicated in the downregulation of ROS production from phagocytes, compromising a protective host response against *Leishmania* [20,30]. In an opposite way, LTB_4 potentiates phagocytes leishmanicidal activity, through increased secretion of ROS [18,19]. As an intracellular parasite, the control of *Leishmania* infection relies on the balance between LTB_4 and PGE_2 production by phagocytes. Thus, unbalanced levels of inflammatory lipid mediators can be detrimental to host response, compromising the elimination of the parasite and influencing disease outcome.

Here, we hypothesize that the low-grade inflammation observed in patients with diabetes increases susceptibility to skin infections and compromises the response to treatment. We assessed CL subjects with diabetes and we found that LTB_4 correlates with delayed healing time. In addition, macrophages from individuals with diabetes are more susceptible to *L. braziliensis* infection, due to an unbalanced LTB_4 / PGE_2 production, resulting in inefficient ROS release. Together, our data show that diabetes induces a systemic inflammatory environment causing an inefficient local immune response against *L. braziliensis*, rendering subjects with diabetes more prone to this infection with a worse prognosis.

Materials and methods

Ethics statement

The Institutional Board for Ethics in Human Research at the Gonçalo Moniz Institute (Oswaldo Cruz

Foundation-IGM-FIOCRUZ, Salvador, Bahia-Brazil), approved this study (protocol number: CAAE 95996618.8.0000.0040). Moreover, all data and samples had the consent of the participants.

Study area

The present cross-sectional cohort study was conducted in the Corte de Pedra district, an endemic area for cutaneous leishmaniasis caused by *Leishmania braziliensis*, located in the municipality of Tancredo Neves (state of Bahia) in northeastern Brazil. The recruitment was conducted between the years 2015–2018, with biweekly visits of our team of physicians to the endemic area.

Sample collection

Prior to therapy, blood and skin biopsy samples were obtained from CL subjects with diabetes (CL + DM) or not (CL). For cell culturing and inflammatory mediator quantification, blood samples (20 mL) were drawn by venipuncture using tubes with Heparin, centrifuged for obtaining of the plasma and Peripheral Blood Mononuclear Cells (PBMCs) using HISTOPAQUE® 1077 (Sigma Aldrich, St Louis, MO). For histopathological analysis, skin biopsies were obtained using a 4 mm punch at borders of topical lesions.

Study population and disease diagnosis

The primary outcome variable was blood glucose levels in individuals with CL. A convenience sample of eight subjects with confirmed CL and 12 individuals with diabetes and CL were enrolled from the Municipal Health Clinic located in Corte de Pedra (CSCP). The statistical power was estimated using Epi info™ software. This approach was carried out considering a 95% confidence interval (two-sided). The power estimated for each parameter measured in this study was above 80%.

The groups were paired through age and sex. CL diagnosis was performed from clinical analyzes, PCR for parasite DNA detection in lesion biopsies and Montenegro skin test. Fasting glucose levels were used to determine diabetes status: glucose levels ≥ 126 mg/dL were considered with diabetes (CL + DM), while values under this cutoff were considered without diabetes (CL). Exclusion criteria: pregnant women, children under 15 years old and PCR negative for parasite detection. All samples were collected after the diagnosis of leishmaniasis and before starting the treatment. As recommended by the guidelines of the Brazilian Ministry of Health, the treatment of CL was performed with Glucantime cycles and patients with diabetes were also treated with Metformin. Clinical and epidemiological information was also obtained from all included

individuals, e.g. gender, age, lesion size, number and time to healing (see electronic supplementary Table S1).

Detection of inflammatory mediators

Cytokines TNF- α (Invitrogen, San Diego, CA), IL-1 β , IL-6 and IL-10 (all from eBioscience, San Diego, CA) were quantified using sandwich enzyme-linked immunosorbent assays in accordance with the manufacturer's instructions. To measure LTB₄ and PGE₂ levels, competitive assays were used (Leukotriene B₄ ELISA Kit and Prostaglandin E₂, both from Cayman Chemical, Ann Arbor, MI), following the manufacturer's instructions.

Gene expression in the lesion

The relative expression of Arachidonate 5-Lipoxygenase (ALOX5) and Prostaglandin-Endoperoxide Synthase 2 (PTGS2) was assessed in biopsies of seven patients with CL and four patients with CL + DM available in RNAlater (Thermo Fisher Scientific, IL, USA), for this approach. The tissues were lysed using TRIzol reagent (Invitrogen, San Diego, USA). Subsequently, phenol–chloroform extraction and quantification of total RNA were performed. cDNA was synthesized by mRNA reverse transcription (RT) using a SuperScript[®] III Reverse Transcriptase kit (Invitrogen, San Diego, CA, USA). Then, cDNA was amplified by quantitative real time PCR (RT-qPCR) using SYBR Green PCR Master Mix (Thermo Fisher Scientific, IL, USA). The fold change of expression between CL and CL + DM patients was calculated using the $2^{-\Delta\Delta CT}$ method after normalization with the housekeeping gene β -actin. Specific primers for ALOX5 (Hs.PT.56a.28007202.g), PTGS2 (Hs.PT.58.77266) and ACTB (Hs.PT.39a.22214847) were purchased from IDT (Illinois, USA).

Histopathological analysis

Skin biopsies were stained with Hematoxylin and Eosin (H&E) to analyze cell infiltrate and the presence of parasites. Images from five randomly selected fields were captured and scanned using an Olympus Scanner under 40x magnification. Within the software, 50% digital magnification was made to better visualize. The quantification of neutrophils and amastigotes was performed manually using blinded counts, with aid of ImageJ 1.52a software (National Institutes of Health, USA).

Culturing of human macrophages

PBMCs from CL and CL + DM were plated (2×10^6) on 24-well tissue culture plates (TPP, Trasadingen,

Switzerland) using 13 mm round glass coverslips (Perfecta). Plates were incubated at 37°C under 5% CO₂ for 30 min. Non-adherent cells were removed by washing and adherent cells were cultured in RPMI 1640 medium (LGC Biotecnologia, São Paulo, Brazil) with 10% autologous serum, 2 mM L-glutamine, 100 U/mL penicillin, 100 mg/mL streptomycin and 50 ng/mL M-CSF for 7 days. Glucose was added to cell cultures at the identical concentrations measured in the blood of each patient.

Leishmania braziliensis and macrophages infection

L. braziliensis (MHOM/BR/01/BA788) promastigotes were cultured at 24°C in Schneider's Insect medium (Sigma Aldrich, St Louis, MO) supplemented with 10% FBS, 2 mM L-glutamine, 100 U/mL penicillin and 100 mg/mL streptomycin. Cultured macrophages were infected for 4 h with stationary-phase *L. braziliensis* at a parasite/cell ratio of 10:1. The cells were fixed, stained using the Quick Panoptic (LB Laborclin, Paraná, Brazil) and analyzed by light microscopy under an objective (Nikon) at 100x to determine infection rate and the presence of amastigotes by blinded counts.

Reactive oxygen species production

ROS production was measured following the infection of monocyte-derived macrophages. Cells were incubated for 30 min with 5 μ M of CellROX[™] Green Reagent (Thermo fisher Scientific, IL, USA) at 37°C under 5% CO₂. Next, cells were washed three times with 1x PBS (Gibco), fixed and stained with DAPI and ProLong Gold antifade reagent (Thermo fisher Scientific, IL, USA). Images were captured under a fluorescence microscope (Leica DMi8) with 485/520 excitation. Corrected Total Cell Fluorescence (CTCF) was calculated based on an average of 24 cells (eight randomly selected cells per field) for each individual using ImageJ 1.52a software (National Institutes of Health, USA).

Statistical analysis

The Mann–Whitney test was used to compare groups with unpaired samples, such as systemic inflammatory mediators (LTB₄, PGE₂, TNF- α , IL-6, IL-1 β and IL-10), histological analysis, gene expression and infection rate. Kruskal–Wallis with Dunn's post-test was used to compare more than two groups (non-infected, infected, CL and CL + DM). For comparisons involving paired samples, such as ROS production, LTB₄ and PGE₂ from culture supernatant, Wilcoxon's test was used. Trend analysis was performed using the Chi-squared test for amastigotes number in the lesion.

Correlation analysis was employed considering clinical parameters, such as blood glucose, lesion size, healing time and inflammatory mediator levels, obtained from Spearman's rank test. One individual with missing data (healing time) is shown in electronic supplementary Table S1. All statistical analyses were performed using GraphPad Prism 7.0 (GraphPad, San Diego, CA). Differences were considered statistically significant when $p < 0.05$.

Results

CL + DM individuals present increased systemic levels of inflammatory mediators

People with diabetes exhibit increased systemic inflammatory cytokines that might be involved in different comorbidities [2,12]. Initially, we obtained plasma samples from individuals with CL and CL + DM to measure systemic levels of inflammatory mediators. CL + DM individuals presented elevated plasma levels of LTB₄ (Figure 1(A)), TNF- α (Figure 1(C)) and IL-6 (Figure 1(D)) when compared to CL. However, no differences were found in PGE₂ (Figure 1(B)), IL-1 β and IL-10 (levels below the detection limit, data not shown) between CL + DM and CL individuals. These findings suggest that diabetes induces an exacerbated and systemic inflammatory profile during CL.

Blood glucose positively correlates with inflammatory mediators, worsening the healing time in CL + DM

Next, we determined whether the abundance of inflammatory mediators correlate with clinical aspects, such as lesion size, wound healing time as well as blood glucose levels in all patients grouped together (both CL and CL + DM). Despite clinical parameters are statistically similar between CL and CL + DM groups (except plasma glucose levels – see electronic supplementary Table S1), the role of inflammatory mediators could be specific for each condition (with or without

diabetes). The matrix summarizes the statistically significant correlations found between these parameters (Figure 2(A)). As shown in Figure 2, the graphs detail all significant correlation found between the parameters, such as blood glucose levels and LTB₄ ($r = 0.5$) (Figure 2(B)), as well as TNF- α ($r = 0.8$) (Figure 2(C)) regardless of diabetes status in subjects with CL. Furthermore, our results showed that LTB₄ production was positively correlated with IL-6 ($r = 0.5$) (Figure 2(D)). Therefore, these results indicate that glycemic levels and serum LTB₄ could contribute to systemic inflammation.

To understand the influence of diabetes on CL, we sought for correlations in CL and CL + DM groups separately (Figure 3(A)). As shown in Figure 3(A), no correlation was observed in CL subjects (dashed line). However, only CL + DM individuals (full line) show a positive correlation of LTB₄ production with blood glucose ($r = 0.7$) (Figure 3(B)) and healing time ($r = 0.6$) (Figure 3(C)). We further confirmed that these correlations are not present in CL individuals (see electronic supplementary Figure S1). These results suggest that hyperglycemia-induced LTB₄ could drive the delayed healing time in CL + DM individuals, but other mediators might also play a role.

We further performed a Receiver Operating Characteristic curve (ROC) analysis to evaluate the role of systemic LTB₄ levels in the lesion outcome (healing time) between CL (Figure 3(D)) and CL + DM (Figure 3(E)) individuals. The results showed that LTB₄ systemic levels above 164.8 pg/mL (specificity 100% and sensitivity 85.71%) influence the healing time of CL subjects (Figure 3(D)). On the other hand, for CL + DM individuals, these levels were above 138.6 pg/mL (specificity and sensitivity 100%) (Figure 3(E)).

These findings suggest that the threshold of systemic LTB₄ levels in CL + DM individuals is lower than CL subjects to delay the healing time. We can hypothesize that individuals with diabetes are more responsive to LTB₄ effects, but further studies with prospective cohorts are necessary to confirm these results.

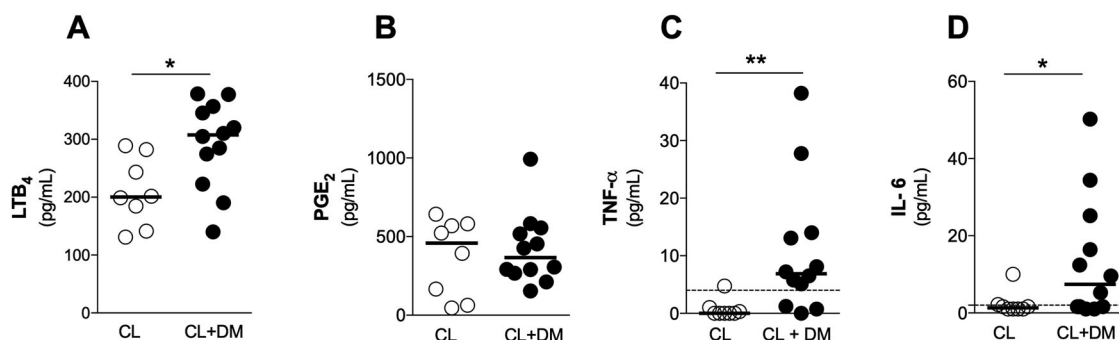


Figure 1. DM increases systemic levels of inflammatory mediators in CL individuals. (A) LTB₄, (B) PGE₂, (C) TNF- α and (D) IL-6 levels in plasma of individuals with Cutaneous Leishmaniasis, without diabetes (CL) or with diabetes (CL + DM) measured by ELISA. CL, n = 8; CL + DM, n = 12. Data shown in median. Mann-Whitney test. * $p < 0.05$; ** $p < 0.01$.

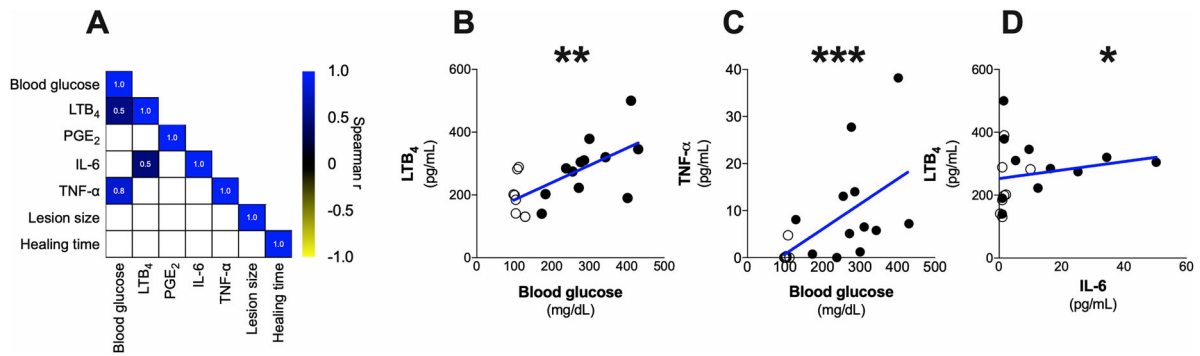


Figure 2. Blood glucose positively correlates with inflammatory mediators in CL individuals regardless of diabetes. (A) Correlation matrix of the data obtained from CL (open circles) and CL + DM (full circles) individuals grouped together. Detailed correlation between blood glucose and LTB₄ (B), TNF-α (C) and between LTB₄ and IL-6 (D). Spearman correlation. * $p < 0.05$; ** $p < 0.01$; *** $p < 0.001$.

Lesions from CL + DM individuals present a neutrophilic infiltrate and reduced 5-LO expression

Next, we sought to locally identify the inflammatory profile in CL and CL + DM lesions, since the production of lipid mediators and the cellular infiltrate could define susceptibility to *Leishmania* spp. [20,31]. Representative images of CL lesions (Figure 4(A)) show the cellular infiltrate of CL subjects (left) and CL + DM individuals (right). We observed a significant

increase of neutrophil infiltrate in CL + DM compared with CL lesions (Figure 4(B)). Furthermore, we found a trend toward higher numbers of amastigotes per field in CL + DM lesions (Figure 4(C)). The gene expression of enzymes that produce inflammatory lipid mediators, such as LTB₄ (*ALOX5* encodes 5-LO enzyme) and PGE₂ (*PTGS2* encodes COX-2 enzyme), was assessed in these lesions. Surprisingly, the results revealed a reduction in the expression of *ALOX5* in CL + DM compared to CL (Figure 4(D)). On the other hand, *PTGS2* gene expression was not altered in patients

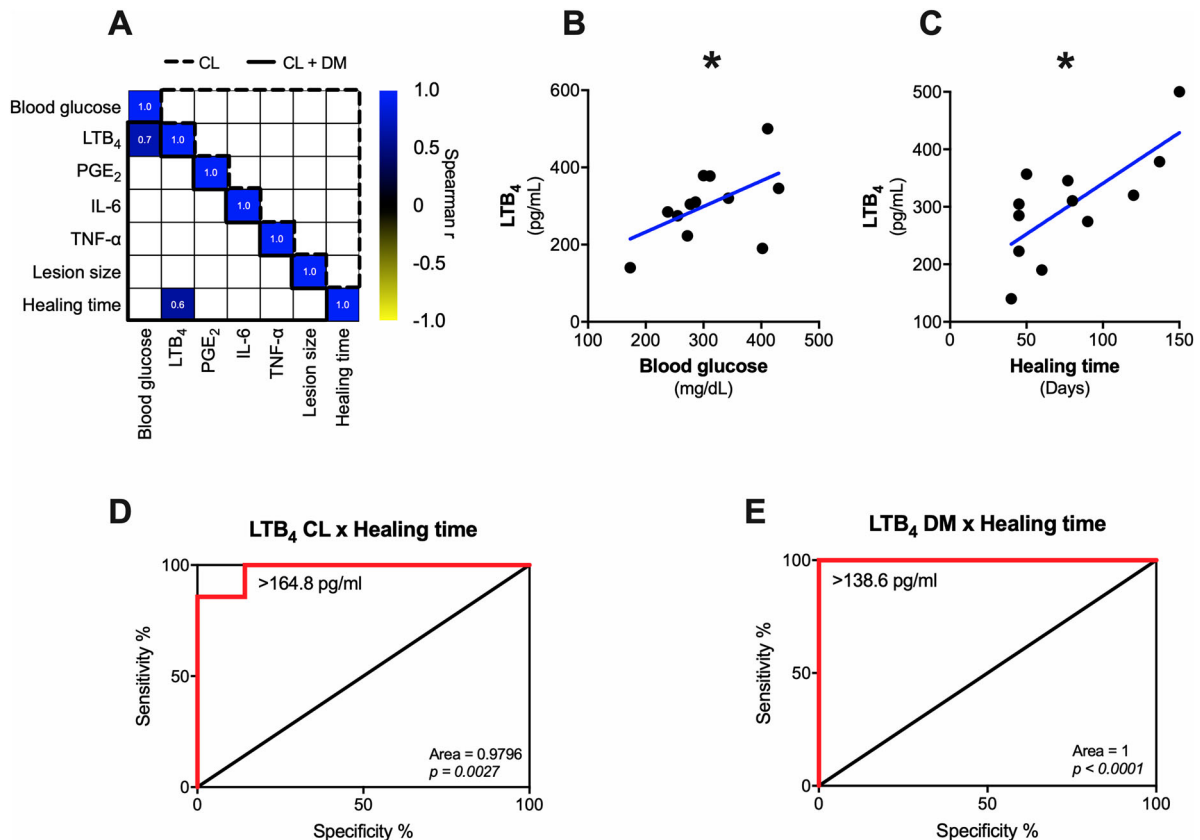


Figure 3. Only LTB₄ positively correlates with healing time and blood glucose in CL + DM individuals. (A) Correlation matrix of clinical data and inflammatory mediators in CL (dashed line) and CL + DM (full line) individuals separately. Detailed correlation between LTB₄ and blood glucose (B) and healing time (C) in CL + DM patients. Receiver operating characteristic (ROC) curve of LTB₄ participation in healing time of (D) CL and (E) CL + DM individuals. Spearman correlation (A-C). * $p < 0.05$.

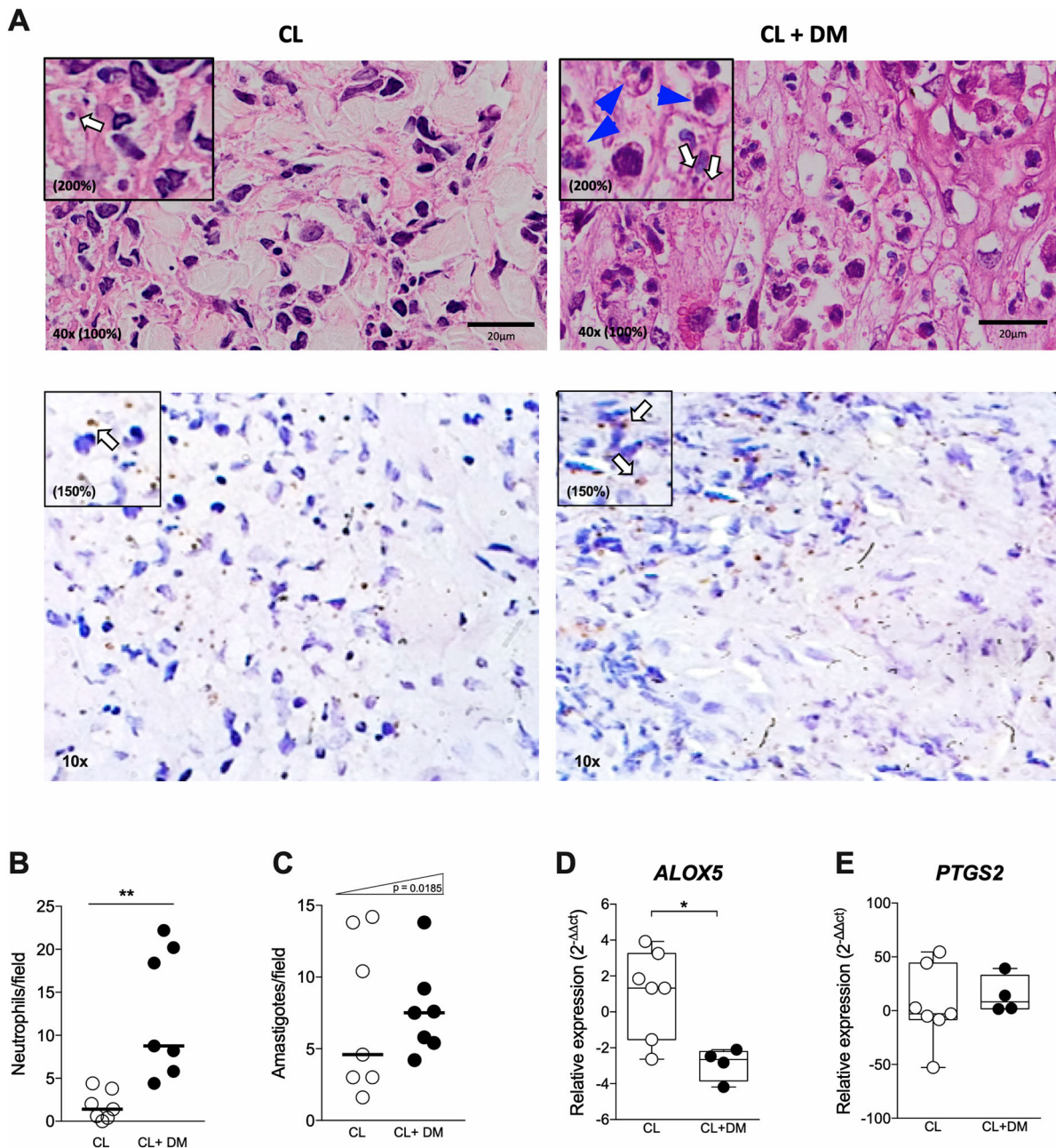


Figure 4. DM individuals are more prone to CL infection. (A) Histological images of a representative CL (left) and CL + DM (right) lesions in HE (above) and IHQ (below). Quantification of neutrophils (B) and amastigotes per field (C) in the lesions of CL and CL + DM individuals. Expression of *ALOX5* (D) and *PTGS2* (E) in the lesion of CL and CL + DM individuals detected by RT-qPCR. Blue arrows: neutrophils; white arrows: amastigotes. Scale bar: 20 µm. 40x objective with 200% digital magnification in HE and 150% in IHQ. Data shown in median (B,C). Box and whiskers with min to max (D,E). Mann-Whitney test (B,D). Chi-squared test for trend (C). * $p < 0.05$; ** $p < 0.01$.

with diabetes (Figure 4(E)). Together, these findings suggest that diabetes locally alters the inflammatory infiltrate with a reduction of 5-LO expression in the lesion and increased susceptibility to CL.

Macrophages from CL + DM individuals are more susceptible to *L. braziliensis* infection

Since we found an increased susceptibility to *L. braziliensis* in the lesions of CL + DM, we assessed the response of macrophages from these individuals *in vitro* (Figure 5(A)). It is well-established that

Leishmania parasites reside in macrophages, which control the infection through the production of reactive oxygen species (ROS), cytokines and chemokines [18]. We found an increased infection rate (Figure 5(B)), total number of intracellular amastigotes (Figure 5(C)) and amastigotes per macrophage (Figure 5(D)) in CL + DM compared to CL macrophages. Furthermore, a positive correlation was observed between blood glucose levels and infection rate of macrophages (Figure 5(E)), suggesting that hyperglycemia leads to susceptibility to *L. braziliensis* in macrophages.

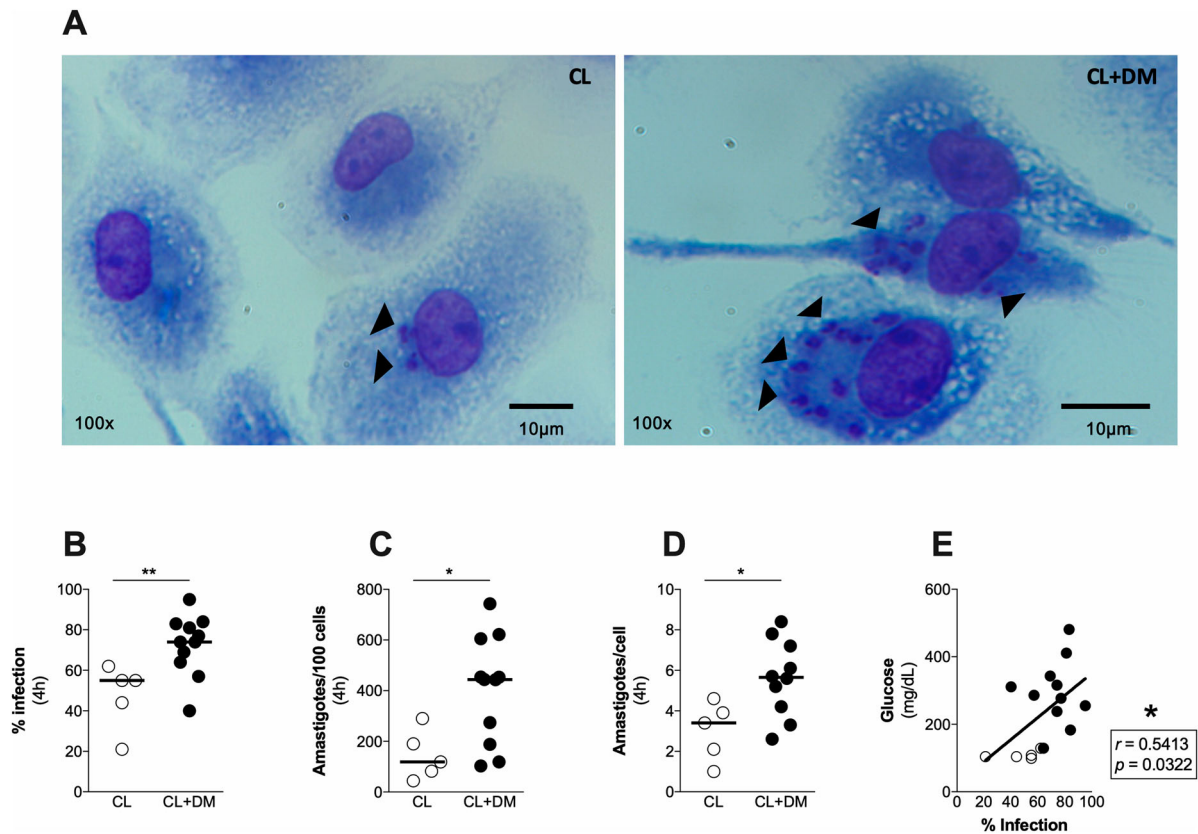


Figure 5. Monocyte-derived macrophages from individuals with CL + DM are more susceptible to *Leishmania braziliensis*. Representative images of cultured macrophages from CL and CL + DM individuals after *L. braziliensis* infection (A). Quantification of infection rate (B), amastigotes in 100 cells (C) and amastigotes per cell (D) in macrophages from CL and CL + DM individuals, after infection with *L. braziliensis*. (E) Spearman correlation between blood glucose levels and infection rate in the CL (open circles) and CL + DM (full circles). Arrows indicate the presence of amastigotes. Data shown in median. Mann-Whitney test (B-D). Spearman correlation (E). * $p < 0.05$; ** $p < 0.01$.

ROS production is unaltered by *L. braziliensis* infection in CL + DM macrophages

To investigate the mechanisms underlying the increased susceptibility of CL + DM macrophages to *L. braziliensis*, we measured the production of ROS. Representative images of cultured macrophages before and after *L. braziliensis* infection show ROS labelling in green (Figure 6(A)) comparing CL (left) and CL + DM (right). We found that ROS production of macrophages from CL + DM individuals (dark circles) is unaltered after *L. braziliensis* infection (Figure 6(B)). On the other hand, macrophages from CL (clear circles) subjects efficiently respond to the infection with increased ROS production. Moreover, the ratio of ROS production between infected and control macrophages revealed higher ROS production in CL subjects (Figure 6(C)). The production of ROS is also showed individually through Cubic spline analysis (Figure 6(D)), confirming that CL + DM macrophages do not alter its production after *L. braziliensis* infection. Taken together, these findings suggest that, under diabetes, macrophages exhibit a reduced capacity to produce ROS in response to *L. braziliensis* infection.

CL + DM macrophages produce more PGE₂ than LTB₄ in response to *L. braziliensis* infection

To investigate whether ROS release could be a consequence of lipid mediators production, we measured LTB₄ and PGE₂ in the culture of macrophages from CL and CL + DM individuals. It is well established that the balance between LTB₄ and PGE₂ can influence the outcome of *Leishmania* spp. infection [32]. Our findings revealed negligible levels of LTB₄ in CL + DM macrophages in response to *L. braziliensis* infection, while levels of LTB₄ in CL macrophages increased after infection (Figure 7(A)). By contrast, both CL + DM and CL macrophages produced increased levels of PGE₂ after infection (Figure 7(B)). To define the predominance of these mediators in the microenvironment, the ratio between PGE₂ and LTB₄ was calculated in both conditions, before and after infection. Interestingly, PGE₂ was the more predominant lipid mediator in CL + DM macrophages, regardless of infection status (Figure 7(C)). Together, these findings show that diabetes imbalances PGE₂/LTB₄ ratio locally produced from macrophages after *L. braziliensis* infection probably through a negative feedback from increased systemic inflammation.

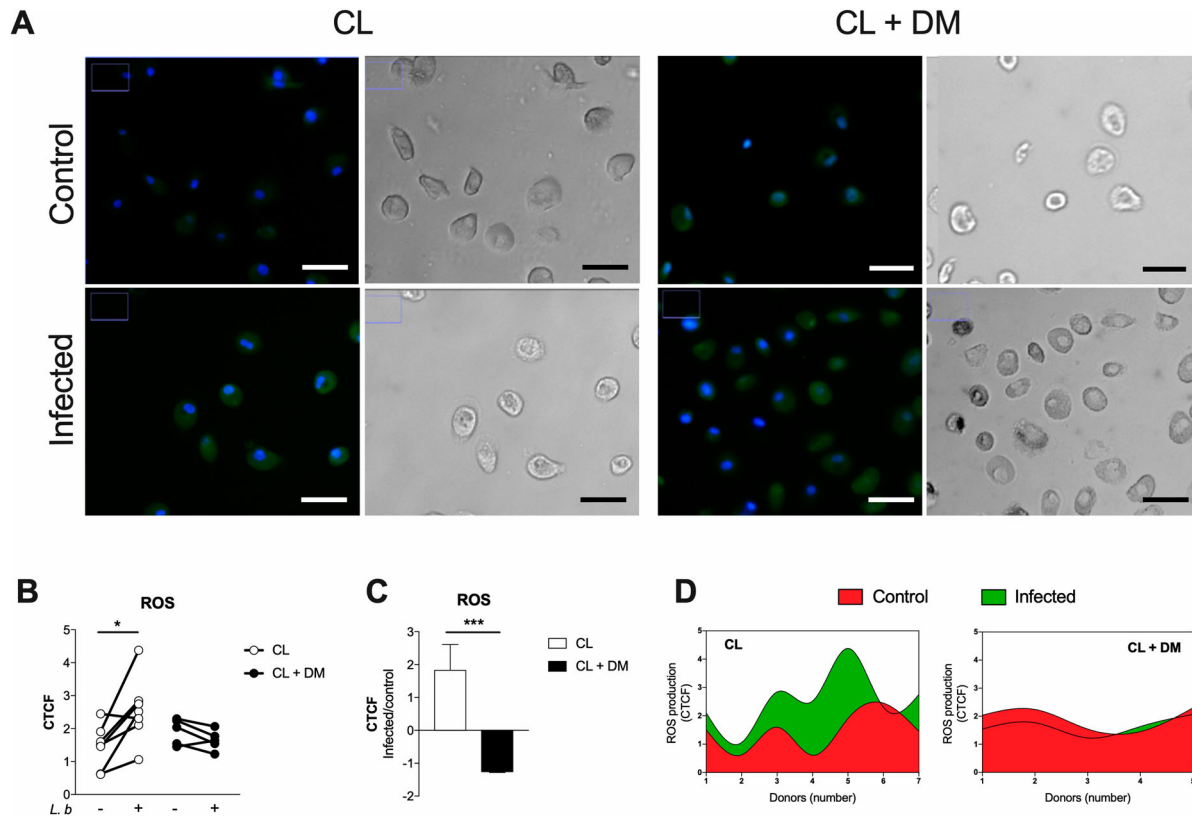


Figure 6. Unaltered production of ROS after *L. braziliensis* infection of monocyte-derived macrophages from CL + DM individuals. Representative images of ROS production in monocyte-derived macrophages from CL and CL + DM individuals, before (control) and after infection by *L. braziliensis* (infected) (A). Quantification of ROS production in monocyte-derived macrophages from CL (open circles) and CL + DM (full circles) individuals after *L. braziliensis* infection (B). Ratio of ROS production between infected and control samples of CL and CL + DM individuals (C). Cubic spline analysis of donor-specific ROS production in monocyte-derived macrophages before (red) and after (green) *L. braziliensis* infection from CL and CL + DM individuals. CTCF: Corrected Total Cell Fluorescence. Green: ROS production; blue: cell nucleus. 40x magnification. Scale bar = 10 μ m. Data represent individual values before and after infection (B). Data shown in median with interquartile range (C). Wilcoxon's test (B). Mann-Whitney test (C). * $p < 0.05$; *** $p < 0.001$.

In sum, this study assessed systemically and locally the effects of diabetes in CL outcome. We found basal levels of LTB_4 in the bloodstream of CL subjects and increased LTB_4 over PGE_2 production from macrophages after *L. braziliensis* infection, resulting in ROS release of and parasite killing. On the other hand, CL + DM individuals show increased levels of LTB_4 in the bloodstream. Furthermore, diabetes abolished LTB_4 production from their macrophages driving PGE_2/LTB_4 ratio toward PGE_2 predominance. This imbalance prevents the production of ROS, favouring parasite survival, increasing the number of neutrophils in the lesion and delays CL healing time (Figure 7(D)).

Discussion

In the current study, we show that diabetes induces a systemic inflammatory profile in individuals with CL. We found that glycemic status and LTB_4 levels directly affect the healing time of CL lesions. More importantly, macrophages obtained from CL + DM individuals are more susceptible to *L. braziliensis* infection.

Herein, we assessed circulating levels of inflammatory mediators in the blood of CL and CL + DM individuals. We found an increase in $TNF-\alpha$, IL-6 and LTB_4 systemic levels of CL + DM. It has been shown that LTB_4 is produced immediately in response to infections, and is one of those responsible for the production of proinflammatory cytokines in experimental model of diabetes [33–35]. Given that inflammatory lipid mediators, such as LTB_4 and PGE_2 , have been scarcely studied in human with diabetes, these findings represent an initial result of diabetes-induced LTB_4 production in response to a protozoan parasite in humans. Interestingly, although our data show an increased production of different inflammatory mediators in CL + DM individuals, only LTB_4 positively correlates with blood glucose levels and healing time of CL lesion. Similar results were described in an experimental model of diabetes, where LTB_4 was found to promote insulin resistance [33]. Accordingly, mice deficient for 5-lipoxygenase (5-LO), presented faster healing time of a sterile skin wound compared to wild type mice, indicating that LTB_4 may be an important target to improve cutaneous healing [36].

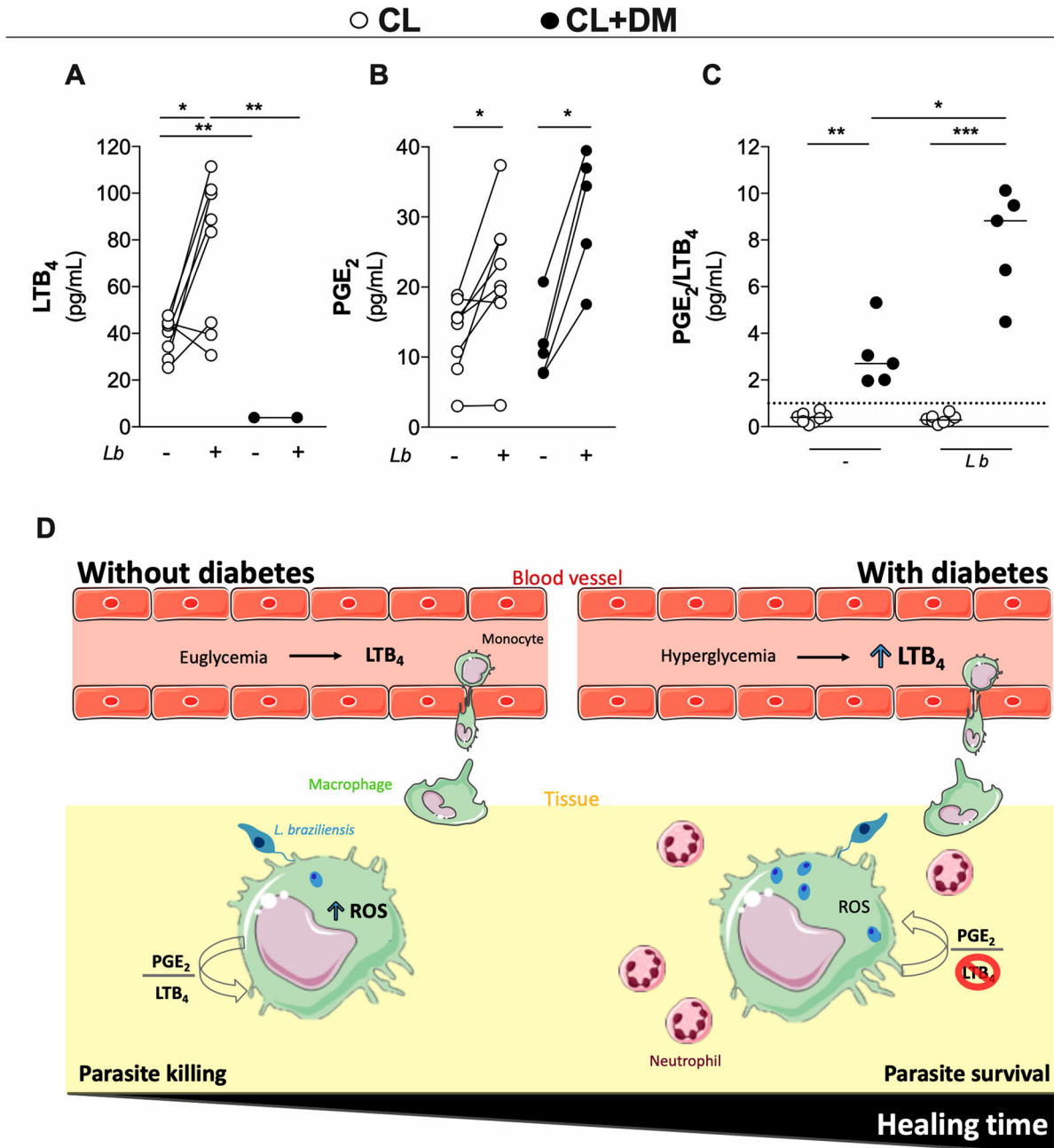


Figure 7. LTB₄ production of monocyte-derived macrophages from CL + DM individuals is abolished after *L. braziliensis* infection. Production of LTB₄ (A) and PGE₂ (B) in the supernatant of cultured macrophages from CL and CL + DM individuals after infection with *L. braziliensis*. Ratio between PGE₂ and LTB₄ production in the supernatant of uninfected or infected macrophages (C). Graphical abstract (D). Data represent individual values before and after infection. Wilcoxon's test and Kruskal-Wallis with Dunn's post-test. * $p < 0.05$; ** $p < 0.01$.

Moreover, a previous study demonstrated that exaggerated LTB₄ signaling correlated with larger nonhealing lesion areas and increased bacterial loads in diabetic mice infected with methicillin-resistant *Staphylococcus aureus* (MRSA) in the skin [15]. We therefore expanded these findings to humans, confirming that diabetes induces a systemic inflammatory profile and delayed healing of a skin lesion caused by an infectious agent.

The healing of an injured tissue is a complex process, involving several inflammatory mediators and immune cells, such as neutrophils, the first leukocytes

recruited, followed by monocytes and lymphocytes [15,36–38]. Enhanced neutrophil chemotaxis is dependent on complement fragments, chemokines and exogenous mediators produced by pathogens, as well as the presence of LTB₄. More specifically, LTB₄ signaling can increase actin polymerization and myosin phosphorylation, which are crucial to neutrophil migration [25,38]. Our findings indicate that diabetes induces an increased neutrophil infiltrate to the skin lesion caused by *L. braziliensis*. Similarly, high levels of LTB₄ were associated with a predominant neutrophil infiltrate toward a sterile injury in the skin of diabetic

mice [34]. Regarding skin lesions caused by an infectious agent, it was observed an inefficient abscess formation against *S. aureus* in an experimental model of diabetes, where LTB₄ was associated with altered neutrophil migration [15]. Taken together, these findings indicate that LTB₄ orchestrates an exaggerated systemic inflammatory response with neutrophil predominance in the infiltrate, which could be related with the delayed healing process observed in skin lesions of individuals with diabetes.

Diabetes is also known to promote susceptibility to infections by extracellular bacteria, fungus and mycobacteria [39–41]. However, the susceptibility to a parasitic infection remains poorly understood. Indeed, we found a trend towards higher numbers of amastigotes in the lesions of CL + DM individuals. With an increment in the number of lesion samples, we should detect statistically differences between the groups. In addition to the small number of patients included, our study is also limited by the lack of a molecular tool to quantify parasite burden in lesions in order to confirm increased susceptibility in CL + DM individuals. However, direct blinded counts of amastigotes in lesions stained with HE represents a reliable alternative approach. Further investigation will be necessary with increased sample sizes to quantify parasite load by molecular methods to confirm whether diabetes favours *L. braziliensis* survival.

In accordance with these findings in the lesion, locally expression of *ALOX* gene, which encodes 5-LO enzyme [22], is reduced in CL + DM individuals, compared to CL samples, indicating a local down-modulation of LTB₄ mediated response. It is important to consider that diabetes involves chronic low-grade inflammation, triggered by endogenous molecules [42]. The accumulation of metabolic products, such as glucose, can induce “sterile inflammation” through the engagement of TLRs [43] or inflammasome activation [44]. Despite the inflamed environment, this immunological dysfunction renders individuals with diabetes more prone toward infectious diseases [40]. Since the main pathogenic mechanism of increased susceptibility in diabetes is a hyperglycemic/inflamed systemic environment that reduces the production of mediators locally in response to infection, this implies the reduction of chemotaxis, phagocytic activity and immobilization of polymorphonuclear leukocytes [40].

We speculate that LTB₄ may be provoking a counterintuitive effect in the context of diabetes, i.e. the excessive production of this mediator is associated with a deficient phagocyte response to pathogens [13,15]. While the mechanisms involved in this association remain unclear, it is theoretically possible that chronic exposition to hyperglycemia could lead to alterations in epigenetic marks or to trained immunity, causing macrophages to respond to subsequent re-stimulation in a sensitized and non-specific manner [45].

During inflammation, the production of leukotrienes is increased, as already reported for diabetic mice, that exhibited high serum levels of LTB₄ [46]. However, the source of this increased systemic levels of LTB₄ is a matter of debate. The production of leukotrienes is largely confined to leukocytes, mainly neutrophils and monocytes/macrophages [22], but other cell types can take up products from arachidonic acid and metabolize it into bioactive leukotrienes through transcellular biosynthesis, such as endothelial cells and keratinocytes [26]. Considering that diabetes and CL are chronic diseases, these individuals probably produce LTB₄ in a constitutive manner [47]. Although we and others have studied LTB₄ production by macrophages [13], other cell types could be involved, such as neutrophils. The CL lesion is initially composed of neutrophils that are later replaced by an intense macrophage infiltrate. Nevertheless, the source of LTB₄ in diabetes and CL remains to be determined.

The main mechanism described to resolve *Leishmania* infection is through the production of ROS by different cell types, especially macrophages [18,20,32]. Surprisingly, we did not find increased ROS production by macrophages from CL + DM individuals after *in vitro* infection, despite their systemic inflammatory status. On the other hand, macrophages from CL subjects showed higher levels of ROS in response to the infection, resulting in parasite killing. Similarly, CL lesions have increased ROS production compared to healthy control skin [48]. Our results indicate that ROS production by macrophages is compromised during diabetes, rendering these individuals more susceptible to a parasite infection. However, phagocytes from diabetic conditions were shown to be able produce increased levels of ROS compared to non-diabetics [13], it was also reported that cells from diabetic patients with tuberculosis produce reduced levels of ROS [49]. Similarly, we showed that, after *L. braziliensis* infection, macrophages from CL + DM patients did not exhibit increased ROS production compared to cells from CL patients, yet basal levels (before infection) were similar. Our findings suggest that locally absent LTB₄ production by macrophages is reflective of reduced ROS production by these cells, since the LTB₄/PGE₂ balance is known to modulate ROS production [18–20].

Several studies have also demonstrated that ROS-dependent elimination of *Leishmania* spp. can be mediated by the lipid mediators LTB₄ and PGE₂ [18–20]. Accordingly, we found that macrophages from CL + DM individuals produce negligible levels of LTB₄ after *L. braziliensis* infection compared to CL macrophages. Moreover, PGE₂/LTB₄ ratio revealed the predominance of PGE₂ in CL + DM macrophages both before and after the infection. A similar study described that the balance between these inflammatory mediators dictates the state of susceptibility or resistance to different species of *Leishmania* [32]. In

addition, it has already been demonstrated that increased levels of PGE₂ produced by macrophages in comparison to LTB₄ impairs ROS production and *L. infantum* killing [20]. This has also been observed in autoimmune disease, such as rheumatoid arthritis [50] and atherosclerosis [51], even in the absence of an infective pathogen. In the context of diabetes, we suggest that systemic chronic low-grade inflammation creates a localized imbalance in eicosanoid production geared towards a predominance of PGE₂, which leads to unaltered ROS production and the survival of *L. braziliensis* parasites. Taken together, these results suggest that PGE₂/LTB₄ balance dictates the production of ROS and, consequently, the control of an infection.

In summary, the current study revealed that diabetes induces a systemic pro-inflammatory profile in individuals with CL, orchestrated by LTB₄, which correlates with impaired healing process and ability to eliminate parasites. These findings suggest that LTB₄ play a central role in the innate immune response against pathogens during diabetes. In particular, due to its capacity to induce ROS production, LTB₄ has significant influence in the disease outcome, defining a host as resistant or susceptible to *Leishmania*. Moreover, this point out LTB₄ as a potential target for future interventions designed to minimize the impact of leishmaniasis in the context of human with diabetes.

Acknowledgments

The authors thank all individuals who participated this study and all the clinical group that recruited eligible participants. We also thank C. P. Figueira, A. Lanfredi and M. F. Santos from the Microscopy facility – RPT (FIOCRUZ). A. K. Miranda and I. N. Coelho for secretariat assistance.

Disclosure statement

No potential conflict of interest was reported by the author(s).

Funding

This work was supported by [Fundação de Amparo à Pesquisa do Estado da Bahia (FAPESB) #1] under Grant [number PET0009/2016]; and [Coordenação de Aperfeiçoamento de Pessoal de Nível Superior – Brazil (CAPES) #2] under Finance [Code 001].

References

- [1] Katsarou A, Gudbjörnsdóttir S, Rawshani A, et al. Type 1 diabetes mellitus. *Nat Rev Dis Prim.* 2017;doi:10.1038/nrdp.2017.16.
- [2] Donath MY, Shoelson SE. Type 2 diabetes as an inflammatory disease. *Nat Rev Immunol.* 2011;11:98–107.
- [3] Bowling FL, Rashid ST, Boulton AJM. Preventing and treating foot complications associated with diabetes mellitus. *Nat Rev Endocrinol.* 2015;11:606–616.
- [4] Ezzati M. Cardiovascular disease, chronic kidney disease, and diabetes mortality burden of cardiometabolic risk factors from 1980 to 2010: a comparative risk assessment. *LANCET Diabetes Endocrinol.* 2014;2:634–647.
- [5] Golden SH, Anderson C, Bray GA, et al. Update on Prevention of cardiovascular disease in Adults With Type 2 diabetes mellitus in light of recent Evidence: A Scientific Statement from the American Heart Association and the American Diabetes Association. *Diabetes Care.* 2015;38:1777–1803.
- [6] Vincent AM, Callaghan BC, Smith AL, et al. Diabetic neuropathy: cellular mechanisms as therapeutic targets. *Nat Rev Neurol.* 2011;7:573–583.
- [7] Wu Y, Quan Y, Liu Y, et al. Hyperglycaemia inhibits REG3A expression to exacerbate TLR3-mediated skin inflammation in diabetes. *Nat Commun.* 2016;7:13393.
- [8] Federation ID. *IDF Diabetes Atlas - 2019.* 2019 doi:10.1289/image.ehp.v119.i03.
- [9] World Health Organization. Estimates for the year 2000 and projections for 2030. *World Health.* 2004;27:1047–1053.
- [10] Chiheb S, Oudrhiri L, Zouhair K, et al. Unusual clinical presentation of cutaneous leishmaniasis in three diabetic patients | Leishmanioses cutanées d'aspect clinique inhabituel chez trois patients diabétiques. *Ann Dermatol Venereol.* 2012;139:542–545.
- [11] Join-Lambert O, Fraitag S, Ribadeau-Dumas F, et al. Is granulomatous mastitis a localized form of hidradenitis suppurativa? *Eur J Dermatology.* 2009;19:513–514.
- [12] Kono H, Onda A, Yanagida T. Molecular determinants of sterile inflammation. *Curr Opin Immunol.* 2014;26:147–156.
- [13] Filgueiras LR, Brandt SL, Wang S, et al. Leukotriene B₄-mediated sterile inflammation favors susceptibility to sepsis in murine type 1 diabetes HHS Public Access. *Sci Signal.* 2015;8, doi:10.1126/scisignal.2005568.
- [14] Ramalho T, Filgueiras L, Silva-Jr IA, et al. Impaired wound healing in type 1 diabetes is dependent on 5-lipoxygenase products. *Sci Rep.* 2018;8:14164.
- [15] Brandt SL, Wang S, DeJani NN, et al. Excessive localized leukotriene B₄ levels dictate poor skin host defense in diabetic mice. *J Clin Invest.* 2018;3(17):1–16.
- [16] Maspi N, Abdoli A, Ghaffarifar F. Pro- and anti-inflammatory cytokines in cutaneous leishmaniasis: a review. *Pathog Glob Health.* 2016;110:247–260.
- [17] Saldanha MG, Queiroz A, Machado PRL, et al. Characterization of the histopathologic features in patients in the early and late phases of cutaneous leishmaniasis. *Am J Trop Med Hyg.* 2017;96:645–652.
- [18] Morato CI, da Silva IA, Borges AF, et al. Essential role of leukotriene B₄ on *Leishmania (Viannia) braziliensis* killing by human macrophages. *Microbes Infect.* 2014; doi:10.1016/j.micinf.2014.08.015.
- [19] Tavares N, Afonso L, Suarez M, et al. Degranulating neutrophils promote leukotriene B₄ production by infected macrophages To Kill *Leishmania amazonensis* parasites. *J Immunol.* 2016;196:1865–1873.
- [20] Araújo-Santos T, Prates DB, França-Costa J, et al. Prostaglandin E₂/leukotriene B₄ balance induced by *Lutzomyia longipalpis* saliva favors *Leishmania infantum* infection. *Parasites and Vectors.* 2014;7:1–8.
- [21] Chaves MM, Marques-da-Silva C, Monteiro APT, et al. Leukotriene B₄ Modulates P2X₇ receptor-mediated *Leishmania amazonensis* elimination in Murine macrophages. *J Immunol.* 2014;192:4765–4773.

- [22] Peters-golden M, Henderson WR. Leukotrienes. *N Engl J Med.* 2007;357:1841–1854.
- [23] Ricciotti E, Fitzgerald AG. [Eicosanoid neuroinflammation] prostaglandins and inflammation. *Arter Thromb Vasc Biol.* 2011;31:986–1000.
- [24] Serezani CH, Lewis C, Jancar S, et al. Leukotriene B4 amplifies NF- κ B activation in mouse macrophages by reducing SOCS1 inhibition of MyD88 expression. *J Clin Invest.* 2011. doi:10.1172/JCI43302.
- [25] Afonso P V, Janka-Junttila M, Lee YJ, et al. LTB4 is a signal-Relay Molecule during neutrophil chemotaxis. *Dev Cell.* 2012;22:1079–1091.
- [26] Brandt SL, Serezani CH. Too much of a good thing: How modulating LTB 4 actions restore host defense in homeostasis or disease. *Semin Immunol.* 2017;33:37–43.
- [27] Nataraj C, Thomas DW, Tilley SL, et al. Receptors for prostaglandin E2 that regulate cellular immune responses in the mouse. *J Clin Invest.* 2001;108:1229–1235.
- [28] Ogawa M, Suzuki J-I, Kosuge H, et al. The mechanism of Anti-inflammatory effects of Prostaglandin E2 receptor 4 activation in Murine Cardiac Transplantation. *Transplantation.* 2009;87:1645–1653.
- [29] Gill SK, Yao Y, Kay LJ, et al. The anti-inflammatory effects of PGE₂ on human lung macrophages are mediated by the EP₄ receptor. *Br J Pharmacol.* 2016;173:3099–3109.
- [30] Diaz-Gandarilla JA, Osorio-Trujillo C, Hernández-Ramírez VI, et al. PPAR activation induces m1 macrophage polarization via cPLA2- α inhibition, activating ROS production against *Leishmania mexicana*. *Biomed Res Int.* 2013;2013, doi:10.1155/2013/215283.
- [31] Amorim CF, Novais FO, Nguyen BT, et al. Variable gene expression and parasite load predict treatment outcome in cutaneous leishmaniasis. *Sci Transl Med.* 2019;4204:1–10.
- [32] Chaves MM, Canetti C, Coutinho-Silva R. Crosstalk between purinergic receptors and lipid mediators in leishmaniasis. *Parasit Vectors.* 2016;9:489.
- [33] Li P, Oh DY, Bandyopadhyay G, et al. LTB4 promotes insulin resistance in obese mice by acting on macrophages, hepatocytes and myocytes. *Nat Med.* 2015;21:239–247.
- [34] Saiwai H, Ohkawa Y. The LTB4-BLT1 Axis Mediates neutrophil infiltration and secondary injury in experimental Spinal Cord injury. *Am J Pathol.* 2010;176:2352–2366.
- [35] Serezani CH, Lewis C, Jancar S, et al. Leukotriene B 4 amplifies NF- κ B activation in mouse macrophages by reducing SOCS1 inhibition of MyD88 expression. *J Clin Invest.* 2011;121:671–682.
- [36] Guimarães FR, Sales-Campos H, Nardini V, et al. The inhibition of 5-lipoxygenase (5-LO) products leukotriene B4 (LTB4) and cysteinyl leukotrienes (cysLTs) modulates the inflammatory response and improves cutaneous wound healing. *Clin Immunol.* 2018;190:74–83.
- [37] Simpson DM, Ross R. The neutrophilic leukocyte in wound repair a study with antineutrophil serum. *J Clin Invest.* 1972;51:2009–2023.
- [38] McDonald B, Kuberski P. Chemokines: Sirens of neutrophil recruitment-but Is It Just One Song? *Immunity.* 2010;33:148–149.
- [39] Benfield T, Jensen JS, Nordestgaard BG. Influence of diabetes and hyperglycaemia on infectious disease hospitalisation and outcome. *Diabetologia.* 2007;50:549–554.
- [40] Alves C, Casqueiro J, Casqueiro J. Infections in patients with diabetes mellitus: A review of pathogenesis. *Indian J Endocrinol Metab.* 2012;16:27.
- [41] Neto AF, Dell'Armellina Rocha PR, Perez EC, et al. Diabetes mellitus increases the susceptibility to encephalitozoonosis in mice. *PLoS One.* 2017;12:1–18.
- [42] Robbins GR, Wen H, Ting JPY. Inflammasomes and metabolic disorders: Old genes in modern diseases. *Mol Cell.* 2014;54:297–308.
- [43] Lakhani CM. Toll-Like receptor 9 Promotes Steatohepatitis by Induction of Interleukin-1 β in mice. *Physiol Behav.* 2019;176:139–148.
- [44] Wen H, Gris D, Lei Y, et al. Fatty acid-induced NLRP3-ASC inflammasome activation interferes with insulin signaling. *Nat Immunol.* 2011;12:408–415.
- [45] Thiem K, Stienstra R, Riksen NP, et al. Trained immunity and diabetic vascular disease. *Clin Sci.* 2019;133:195–203.
- [46] Filgueiras LR, Brandt SL, Wang S, et al. Leukotriene B 4 – mediated sterile inflammation promotes susceptibility to sepsis in a mouse model of type 1 diabetes. *Sci Signal.* 2015;8:1–10.
- [47] Boizel R, Bruttman G, Benhamou PY, et al. Regulation of oxidative stress and inflammation by glycaemic control: Evidence for reversible activation of the 5-lipoxygenase pathway in type 1, but not in type 2 diabetes. *Diabetologia.* 2010;53:2068–2070.
- [48] Novais FO, Nguyen BT, Beiting DP, et al. Human Classical monocytes control the intracellular Stage of *Leishmania braziliensis* by reactive oxygen species. *J Infect Dis* 2014;209, doi:10.1093/infdis/jiu013.
- [49] Chao WC, Yen CL, Wu YH, et al. Increased resistin may suppress reactive oxygen species production and inflammasome activation in type 2 diabetic patients with pulmonary tuberculosis infection. *Microbes Infect.* 2015;17:195–204.
- [50] Zheng LX, Li KX, Hong FF, et al. Pain and bone damage in rheumatoid arthritis: role of leukotriene B4. *Clin Exp Rheumatol* 2019;37:872–878.
- [51] Geng S, Zhang Y, Lee C, et al. Novel reprogramming of neutrophils modulates inflammation resolution during atherosclerosis. *Sci Adv.* 2019;5, doi:10.1126/sciadv.aav2309.