


RESEARCH

Open Access



Frequency of detection and load of amastigotes in the pancreas of *Leishmania infantum*-seropositive dogs: clinical signs and histological changes

William de Oliveira Kost¹, Sandro Antonio Pereira¹, Fabiano Borges Figueiredo², Artur Augusto Velho Mendes Junior¹, Maria de Fátima Madeira³, Luciana de Freitas Campos Miranda³, Raquel de Vasconcellos Carvalhaes de Oliveira⁴, Luiz Cláudio Ferreira⁵, Fernanda Nazaré Morgado⁶ and Rodrigo Caldas Menezes^{1*} 

Abstract

Background: Zoonotic visceral leishmaniasis is caused by the protozoan *Leishmania infantum* and is highly lethal in humans and dogs if left untreated. The frequency of this parasite and associated histological changes in the pancreas of dogs are poorly studied. Therefore, the objectives of this study were to evaluate the frequency of detection and load of amastigotes in the pancreas of *L. infantum*-seropositive dogs and to identify the clinical signs and histological changes associated with parasitism of this organ.

Methods: One hundred forty-three dogs from an endemic area in Brazil that tested seropositive for *L. infantum* were studied. The dogs were clinically examined, killed, and necropsied between 2013 and 2014. One fragment of the pancreas was randomly collected for histopathology and immunohistochemistry, and spleen and bone marrow were collected for culture.

Results: *Leishmania* amastigotes were detected in the pancreas of 22 dogs (15.4%) by immunohistochemistry, all exhibiting *L. infantum* parasitism in the spleen and/or bone marrow. Poor body condition and cachexia were only associated with infection of the pancreas with *Leishmania* spp. ($p = 0.021$) and were found in 40.9% of dogs with pancreatic infection. Anorexia, vomiting, and/or diarrhea were observed in 9.2% of dogs with pancreatitis. The median parasite load in the pancreas was 1.4 infected macrophages/mm². Pancreatic histological changes and their frequencies were: granulomatous pancreatitis (28.0%), lymphoplasmacytic pancreatitis (23.8%), acinar cell degeneration (6.3%), fibrosis (5.6%), hemorrhage (2.1%), eosinophilic pancreatitis (0.7%), suppurative pancreatitis (0.7%), and necrosis (0.7%).

Conclusions: The present results demonstrate that *L. infantum* is one of the etiological agents of chronic pancreatitis in dogs; however, the frequency of detection and parasite load are low in this organ. The lack of an association of poor body condition and cachexia with pancreatitis and the low frequency of clinical signs commonly associated

*Correspondence: rodrigo.menezes@ini.fiocruz.br

¹ Laboratório de Pesquisa Clínica em Dermatozoonoses em Animais Domésticos, Instituto Nacional de Infectologia Evandro Chagas, Fundação Oswaldo Cruz, Av. Brasil, 4365, Rio de Janeiro, RJ 21040-360, Brazil
Full list of author information is available at the end of the article



with pancreatitis suggest that a significant portion of the organ is not affected by this parasite. On the other hand, the association of poor body condition and cachexia with concomitant infection of the pancreas, spleen, and/or bone marrow with this parasite suggests that these manifestations are the result of a more advanced stage of canine visceral leishmaniasis.

Keywords: Canine visceral leishmaniasis, Histopathology, Pancreatitis, Immunohistochemistry

Background

Zoonotic visceral leishmaniasis (ZVL) affects humans and domestic and wild mammals. This disease is caused by the protozoan *Leishmania infantum* (syn. *L. chagasi*), and the domestic dog (*Canis familiaris*) is the main reservoir of this parasite in urban areas [1]. In Brazil, the vectors responsible for the transmission of this protozoan are female sand flies of the species *Lutzomyia longipalpis* and *Lutzomyia cruzi* [2]. Zoonotic visceral leishmaniasis is spreading in Brazil and in the state of Rio de Janeiro [3, 4]. There were about 20,000 human cases of ZVL in Brazil between 2014 and 2019 [5]. In dogs infected with *L. infantum*, the multiplication of this parasite in macrophages causes the destruction of these cells and can induce an immune response of the Th1/Th2 type. This immune response leads to tissue damage in several organs mainly as a result of a granulomatous inflammatory reaction, the deposition of immune complexes, or the production of autoantibodies [6].

Inflammation of the pancreas or pancreatitis is a common alteration in dogs, which is classified as acute or chronic [7]. Acute and chronic pancreatitis is distinguished based not only on duration but also on histological changes. Unlike acute pancreatitis, which is characterized mainly by a predominance of neutrophils in the inflammatory infiltrate, edema, and necrosis, chronic pancreatitis is characterized by a predominantly mononuclear inflammatory infiltrate and irreversible changes such as atrophy and fibrosis [7, 8]. Depending on the degree of organ involvement, pancreatitis in dogs can vary from subclinical to clinical. The main clinical signs are anorexia, depression, abdominal pain, diarrhea, and vomiting, which can lead to death [8–10]. Chronic pancreatitis causes the progressive loss of exocrine and endocrine function, which can result in exocrine pancreatic insufficiency (EPI) and diabetes mellitus when > 80 to 90% of the exocrine or endocrine tissue is lost [7]. The main clinical signs of EPI are polyphagia, increased fecal volume, and weight loss that can progress to cachexia [7, 11]. Important etiologies of pancreatitis in dogs include dietary factors, hyperlipoproteinemia, drugs, toxins, hypercalcemia, pancreatic trauma, ischemia, and parasitosis, as well as idiopathic causes [7, 9, 12–14].

Reports of pancreatitis associated with *L. infantum* infection are rare. Carrasco et al. [12] reported the case of

a dog with visceral leishmaniasis showing signs of acute pancreatitis. The final diagnosis after histopathological examination of the pancreas was acute hemorrhagic pancreatitis associated with ZVL, although no amastigote forms were detected in this organ. Guerra et al. [15] found *Leishmania* amastigote forms in the pancreas of 22.6% of naturally infected dogs examined by immunohistochemistry (IHC). However, these authors did not describe pancreatic histological changes. Pancreatitis is an adverse effect of drugs used to treat ZVL in dogs and humans such as meglumine antimoniate, but the mechanisms underlying pancreatitis induced by these drugs in dogs and humans are unknown [13, 16, 17]. A marked increase of serum pancreatic lipase immunoreactivity (PLI) concentration has been reported in dogs with pancreatitis caused by the treatment of ZVL with meglumine antimoniate [13, 16].

Knowledge of pancreatic parasitism with *L. infantum* in dogs and the associated clinical signs and histological changes is important for a better understanding of the pathogenesis of this parasitosis as well as to provide information for future studies on adverse effects associated with anti-*Leishmania* drugs used for the treatment of ZVL. Therefore, the aims of this study were to assess the frequency of detection and load of amastigotes in the pancreas of *L. infantum*-seropositive dogs and to identify the clinical signs and histological changes associated with the parasite in this organ.

Methods

Sample

This is a retrospective study of a non-probabilistic sample of 143 pancreata obtained from dogs that tested seropositive for anti-*Leishmania* antibodies by the rapid dual-path platform assay (TR DPP[®]) [18] and by enzyme immunoassay (ELISA) [19]. Both serological tests are produced by BioManguinhos (Fiocruz, Rio de Janeiro, Brazil). These two serological tests and diagnostic criteria were used because they are accurate [20] and are recommended by the Brazilian Ministry of Health for classification of infection of dogs with *L. infantum* and for euthanasia of the animals as a control measure of canine visceral leishmaniasis [2]. All dogs included in the study had owners, were domiciled, and did not receive any treatment for ZVL. The serological tests were performed

by public health services participating in the ZVL surveillance and control program of the state of Rio de Janeiro, with permission of the owners. The samples were collected between 2012 and 2013 from dogs from the town of Barra Mansa (22°32′25.19″ S and 44°10′35.33″ W), located in the south of the state of Rio de Janeiro. This town is an endemic region for ZVL, including human and canine cases [21, 22]. Since the dogs tested positive, they were sent by the Municipal Health Department of Barra Mansa to be killed at the Evandro Chagas National Institute of Infectious Diseases (INI-Fiocruz).

At INI-Fiocruz, the dogs were examined clinically by inspecting the skin and mucous membranes (oral and ocular) and by palpation of the superficial lymph nodes and abdominal organs. The following clinical signs of ZVL in dogs were considered: skin changes (desquamation, dull hair coat, onychogryphosis, alopecia, and cutaneous ulcer), poor body condition, cachexia, lymphadenomegaly, splenomegaly, hepatomegaly, pale ocular or oral mucosae, and keratoconjunctivitis [23]. A poor body condition was classified when the dog had easily visible ribs, lumbar vertebrae, and pelvic bones, some evidence of other bony prominences, no palpable body fat, and absent or minimal to obvious loss of muscle mass. Cachexia was defined when the animal's ribs, lumbar vertebrae, pelvic bones, and all bony prominences were evident from a distance, with no discernible body fat and severe loss of muscle mass. The dogs were then euthanized with an intravenous overdose of sodium thiopental and potassium chloride in accordance with the recommendations of the national ZVL control program [2] and the guidelines of the Federal Council of Veterinary Medicine [24]. The frequencies of anorexia, vomiting, and/or diarrhea, which are commonly associated with pancreatitis in dogs, were obtained from the medical records of the Municipal Health Department of Barra Mansa.

During necropsy, the pancreas was examined macroscopically, and one fragment of this organ with a maximum length of 1.0 to 2.0 cm and 0.3 to 0.5 cm thick was randomly collected, fixed in 10% buffered formalin, and processed for paraffin embedding [25] for histopathology and IHC (detection of amastigote forms of *Leishmania* spp.). Additionally, fragments of spleen and bone marrow were collected aseptically and immersed in sterile saline solution containing antimicrobials for parasitological culture.

Histopathology and immunohistochemistry

Three serial 5- μ m histological sections were cut from paraffin blocks containing pancreatic tissue samples stored at the Pathological Anatomy Service of the Evandro Chagas National Institute of Infectious Diseases,

Oswaldo Cruz Foundation. Two sections were mounted on non-silanized slides for histopathology, and one section was mounted on silanized slides for IHC.

For histopathology, the tissues were stained with hematoxylin–eosin [25], and the inflammatory infiltrate was classified as follows: granulomatous, predominance of cells of the monocyte-macrophage system (activated macrophages, epithelioid macrophages, or multinucleate giant cells); lymphoplasmacytic, predominance of lymphocytes, and plasma cells; suppurative, predominance of neutrophils; eosinophilic, predominance of eosinophils. Pancreatitis was classified as acute to subacute if the inflammatory infiltrate exhibited a predominance of neutrophils or eosinophils, with or without edema and necrosis, and no irreversible changes (atrophy or fibrosis); chronic, if characterized by a predominantly mononuclear infiltrate (granulomatous or lymphoplasmacytic) with or without irreversible changes such as atrophy and fibrosis [7, 8].

For evaluation of the intensity of inflammation, cell types (macrophages, plasma cells, lymphocytes, eosinophils, and neutrophils) detected in the inflammatory infiltrate were analyzed semi-quantitatively under a light microscope using a 1-mm² optical grid and a manual cell counter. The number of cells was determined in one microscopic field at 400 \times magnification in the most cellular area of the histological section. The median number of cells was calculated for the entire inflammatory infiltrate (sum of all cell types found). The intensity of the inflammatory infiltrate was classified as absent, mild (1 to 250 inflammatory cells/mm²), moderate (>250 and \leq 450 inflammatory cells/mm²), and severe (>450 inflammatory cells/mm²).

For IHC aimed at detecting amastigote forms of *Leishmania* spp., the tissues were submitted to the steps of deparaffinization, rehydration, blocking of endogenous peroxidase, antigen retrieval, blockade of nonspecific protein binding, and incubation with polyclonal rabbit anti-*Leishmania* serum diluted 1:500, following a previously described protocol [26]. The polymer-based HiDef Detection HRPTM Polymer System (Cell Marque, Rocklin, CA, USA) was used for the detection of *Leishmania* amastigote forms according to manufacturer's recommendations. Histological sections of organs intensely parasitized with *Leishmania* amastigotes were incubated with non-immune homologous serum as negative control and with polyclonal rabbit anti-*Leishmania* serum as positive control.

For the evaluation of parasite load in the pancreas by IHC, macrophages parasitized with *Leishmania* amastigote forms were quantified as described for the quantification of inflammatory cells by histopathology. However, cells were counted in five fields at 400 \times magnification in

the most parasitized areas of the sections. The average number of parasitized macrophages was calculated, and the parasite load was classified as absent, low (0.2 to 10 parasitized macrophages/mm²), and moderate to intense (> 10 parasitized macrophages/mm²).

Parasitological culture and identification of *Leishmania* species

The fragments were cultured at 26–28°C in Novy-MacNeal-Nicolle medium plus Schneider's *Drosophila* medium (Sigma-Aldrich®, St. Louis, MO, USA) supplemented with 10% fetal bovine serum and penicillin and streptomycin as antibiotics [27]. Parasites isolated in culture were identified as *L. infantum* by multilocus enzyme electrophoresis [28].

Statistical analysis

For exploratory analysis, the relative frequencies of the categorical variables were calculated. For quantitative variables, medians and their interquartile range were used. The normality of the quantitative variables was rejected by the Shapiro-Wilk test. Pearson's chi-square test and Fisher's exact test in the case of expected counts < 5 or 2 × 2 tables were used to compare the occurrence of clinical signs of poor body condition and cachexia and the different histological changes as well as to associate the frequencies of histological changes with the results of IHC for the diagnosis of *Leishmania* spp. The Mann-Whitney test was used to compare the intensity of the inflammatory infiltrate (for all cells) between *Leishmania* spp.-positive and -negative pancreas. Spearman's correlation test was applied to verify the correlation between parasite load and the intensity of the inflammatory infiltrate in the pancreas, where values close to +1 indicate a positive correlation, close to -1 a negative correlation, and 0 no correlation.

The tests were considered significant at the 5% level. Despite criticism of the exclusive use of *p*-values and due to the small sample size in some groups, the theoretical relevance and a difference of at least 10 percentage points were also considered to be indicative of a potential difference between groups [29]. In addition, 95% confidence intervals (95% CI) were provided for proportions as a measure of uncertainty. The analysis was performed using the R software, version 3.5.1 [30].

Results

Of the 143 dogs evaluated, 75 (52.4%) were male and 118 (82.5%) were mongrel. Five of the 25 breed dogs were Labrador Retrievers, four were Pinschers, three were American Pit Bull Terriers, three were Dachshunds, two were Cocker Spaniels, two were Rottweilers, two were German Shepherds, one was a Dobermann, one

was a Canadian Shepherd, one was a Poodle, and one was a Cane Corso. The age of the dogs ranged from 1 to 7 years in 102 (71.3%) animals, 32 (22.4%) were older than 7 years, and nine (6.3%) were up to 12 months old. Eighty-two animals (57.3%) had at least one clinical sign compatible with ZVL, and 61 (42.7%) had no clinical signs compatible with ZVL. Anorexia, vomiting, and/or diarrhea were observed in nine (6.3%) dogs, three of them without clinical signs compatible with ZVL. The clinical signs observed are described in Table 1.

No gross changes were observed in the examined pancreas. However, this organ exhibited histological changes in 80 (55.9%) of the 143 dogs examined, and pancreatitis was observed in 76 (53.1%). Seventy-four (97%) of the 76 cases of pancreatitis were chronic (granulomatous or lymphoplasmacytic) (Fig. 1a–d), and 2 (3%) were acute to subacute (suppurative or eosinophilic) (Fig. 1e, f). Among the 80 dogs with histological changes in the pancreas, 4 (5%) did not have pancreatitis. Two of these four dogs had only vacuolar degeneration of acinar cells (Fig. 2a), and two had only fibrosis. The frequencies of the types of pancreatitis and other histological changes are shown in Table 2.

Amastigote forms of *Leishmania* spp. were detected by IHC in the pancreas of 22 dogs (15.4%) (Fig. 3). All six cases that tested positive for *Leishmania* spp. amastigote forms by histopathology were also positive by IHC, which detected an additional 16 cases.

Table 3 shows the dog breed, sex, and age according to the result of IHC for the diagnosis of *Leishmania* spp. in the pancreas. The four dog breeds that tested positive by IHC included two Labrador Retrievers, one Pinscher, and one Cocker Spaniel.

Among the 76 dogs with pancreatitis, 61 were mongrels (32 with granulomatous pancreatitis, 28 with lymphoplasmacytic pancreatitis, and 1 with eosinophilic pancreatitis), 4 were Labrador Retrievers (3 with

Table 1 Frequency of clinical signs in 143 dogs from the town of Barra Mansa, Rio de Janeiro, Brazil, that tested seropositive for anti-*Leishmania* spp. antibodies (2012 to 2013)

Clinical signs (n = 143)	n (%)
Skin changes	40 (28.0)
Hepato-/splenomegaly	40 (28.0)
Poor body condition/cachexia	30 (21.0)
Lymphadenomegaly	23 (16.1)
Keratoconjunctivitis	18 (12.6)
Diarrhea	9 (6.3)
Anorexia	5 (3.5)
Vomiting	3 (2.1)

n, number of dogs

granulomatous pancreatitis and 1 with lymphoplasmacytic pancreatitis), 3 were Pinschers (3 with granulomatous pancreatitis), 2 were American Pitbull Terriers (2 with granulomatous pancreatitis), 2 were Cocker Spaniels (1 with granulomatous pancreatitis and 1 with lymphoplasmacytic pancreatitis), 1 was a Rottweiler (with granulomatous pancreatitis), 1 was a German Shepherd (with granulomatous pancreatitis), 1 was a Canadian Shepherd (with granulomatous pancreatitis), and 1 was a Dachshund (with granulomatous pancreatitis). Thirty-six were males, and 40 were females. The frequencies of pancreatitis according to age were: 5 of 9 (55.6%) dogs up to 12 months old, 50 of 102 (49.0%) dogs between 1 and 7 years old, and 21 of 32 (65.6%) dogs older than 7 years. There was no statistically significant association of breed, age, or sex with the presence or absence of histological changes in the examined pancreas.

Histological changes were observed in 20 (90.9%) of the 22 pancreata that tested positive for amastigote forms of *Leishmania* spp. by IHC. Chronic pancreatitis was observed in 20 (90.9%) cases, and acute to subacute pancreatitis was absent (Table 4). Among the 121 pancreata that tested negative for *Leishmania* spp. amastigote forms by IHC, pancreatic histological changes were detected in 60 (49.6%). Chronic pancreatitis was observed in 54 (44.6%) cases, acute to subacute pancreatitis in 2 (1.6%), only degeneration of acinar cells in 2 (1.6%), and only fibrosis in 2 (1.6%) (Table 4).

Considering the cases of chronic pancreatitis, an interstitial inflammatory infiltrate mainly consisting of activated macrophages and a smaller number of plasma cells and lymphocytes (Fig. 1a, b) was observed in dogs with granulomatous pancreatitis ($n=40$). In six of these cases (15%), amastigote forms of *Leishmania* spp. were detected inside the parasitophorous vacuoles in the cytoplasm of macrophages located in the interstitial tissue (Fig. 1b) and in connective tissue around the interlobular ducts. A nematode larva was observed in the parenchyma of one male dog, a 12-month-old Canadian Shepherd (Fig. 1c). This case, which was negative for *Leishmania* spp. amastigotes in the pancreas, exhibited an inflammatory infiltrate with a predominance of macrophages

accompanied by many eosinophils, lymphocytes, and plasma cells as well as fibrosis (Fig. 1c). The intensity of the inflammatory infiltrate in the cases of granulomatous pancreatitis was mild in 32 (80%), moderate in 6 (15%), and severe in 2 (5%). Fibrosis (Fig. 2b) associated with an inflammatory infiltrate of moderate to severe intensity was observed in four cases. Additionally, there were two cases of hemorrhage associated with a mild inflammatory infiltrate and one case of degeneration of acinar cells associated with a moderate inflammatory infiltrate.

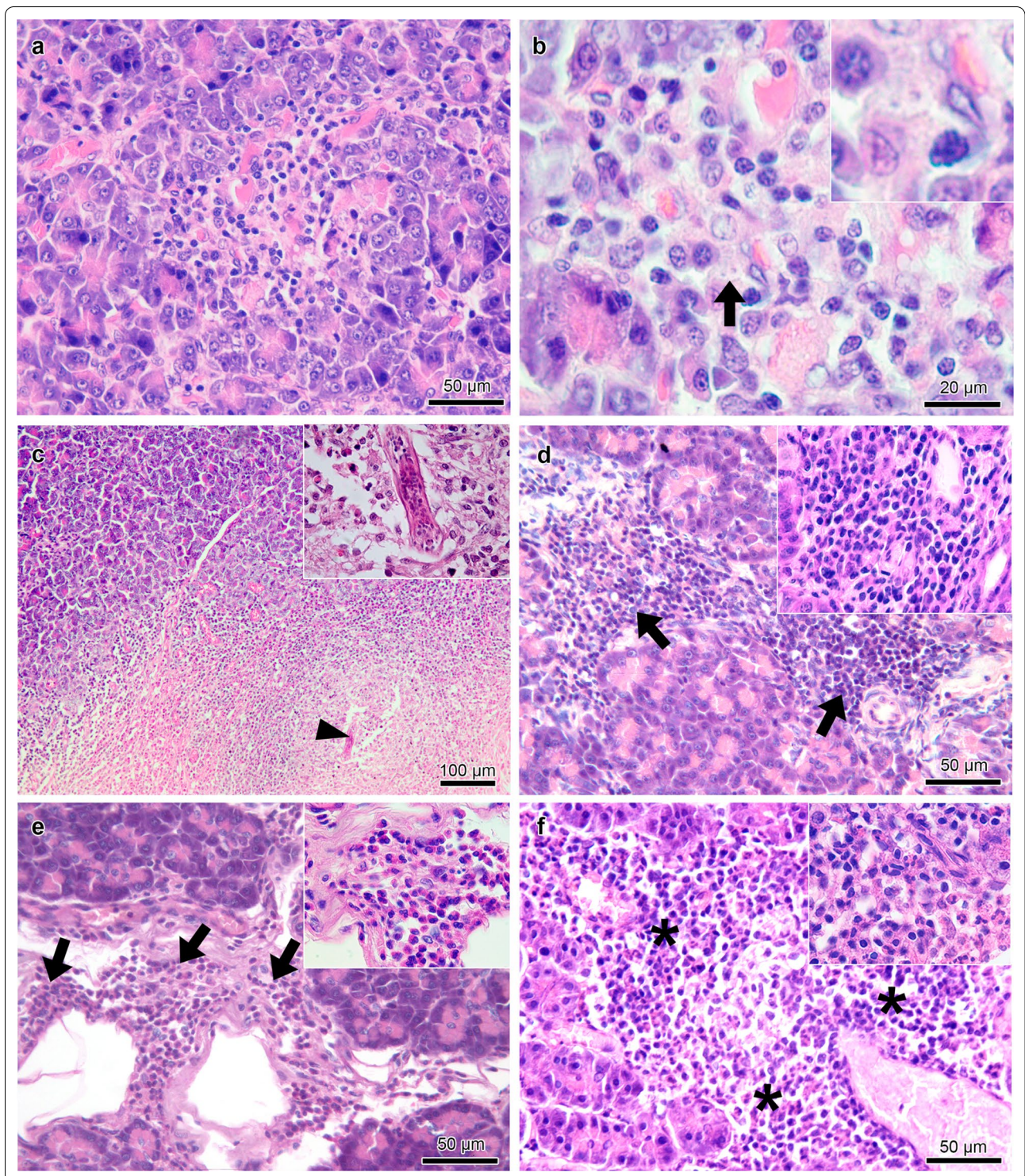
A predominantly perivascular multifocal inflammatory infiltrate was observed in the cases of lymphoplasmacytic pancreatitis ($n=34$), which consisted mainly of lymphocytes and plasma cells and a smaller number of macrophages (Fig. 1d). The intensity of the inflammatory infiltrate in cases of lymphoplasmacytic pancreatitis was mild in 21 (62%), moderate in 11 (32%), and severe in 2 (6%). Additionally, one case of hemorrhage (Fig. 2c) and one case of necrosis (Fig. 2d) associated with a moderate inflammatory infiltrate were observed as well as three cases of degeneration of acinar cells associated with a moderate to severe inflammatory infiltrate.

Among the cases of acute to subacute pancreatitis, there was a predominantly perivascular multifocal inflammatory infiltrate of moderate intensity in eosinophilic pancreatitis ($n=1$), which consisted mainly of eosinophils and a smaller number of lymphocytes and plasma cells (Fig. 1e). In suppurative pancreatitis ($n=1$), a predominantly perivascular multifocal inflammatory infiltrate of moderate intensity was observed, mostly consisting of neutrophils with many lymphocytes and plasma cells and few macrophages (Fig. 1f).

Among the 22 dogs whose pancreas was positive for *Leishmania* spp. amastigotes by IHC, 13 (59.1%) had at least one clinical sign compatible with ZVL and 2 (9.1%) had anorexia, vomiting, and/or diarrhea. On the other hand, among the 121 dogs whose pancreas tested negative for *Leishmania* spp. amastigotes by IHC, 69 (57.0%) showed clinical signs compatible with ZVL and 7 (5.8%) had anorexia, vomiting, and/or diarrhea. The clinical signs and their frequencies in these two groups of dogs are shown in Table 5.

(See figure on next page.)

Fig. 1 Histological changes in the pancreas of dogs seropositive for anti-*Leishmania infantum* antibodies with chronic (a–d) and acute to subacute (e–f) pancreatitis. **a** Moderate diffuse granulomatous pancreatitis composed mainly of macrophages, with a smaller number of plasma cells and lymphocytes. **b** Higher magnification of the previous figure showing many macrophages, with a smaller number of plasma cells and lymphocytes and *Leishmania* spp. amastigotes (arrow and inset) within the cytoplasm of a macrophage in the interstitial tissue amid the inflammatory infiltrate. **c** Severe granulomatous pancreatitis composed mainly of macrophages, with a smaller number of lymphocytes, plasma cells, and eosinophils. Fibrosis and a nematode larva (arrowhead and inset) are also seen in the parenchyma. **d** Severe interstitial lymphoplasmacytic pancreatitis (arrows and inset) consisting mainly of lymphocytes and plasma cells. **e** Severe perivascular eosinophilic pancreatitis (arrows and inset) composed mainly of eosinophils, with few lymphocytes and plasma cells. **f** Severe perivascular suppurative pancreatitis (asterisks and inset) consisting mainly of neutrophils, with many lymphocytes and plasma cells and few macrophages. Hematoxylin–eosin staining (a–f)



The frequency of pancreatitis (granulomatous, lymphoplasmacytic, eosinophilic, or suppurative) was 53.3% in dogs with poor body condition or cachexia and 53.1% in dogs without these clinical signs. There was no

statistically significant association between pancreatitis and poor body condition or cachexia ($p=1.000$).

Seven (9.2%) of the 76 dogs with pancreatitis had anorexia, vomiting, and/or diarrhea. In these seven

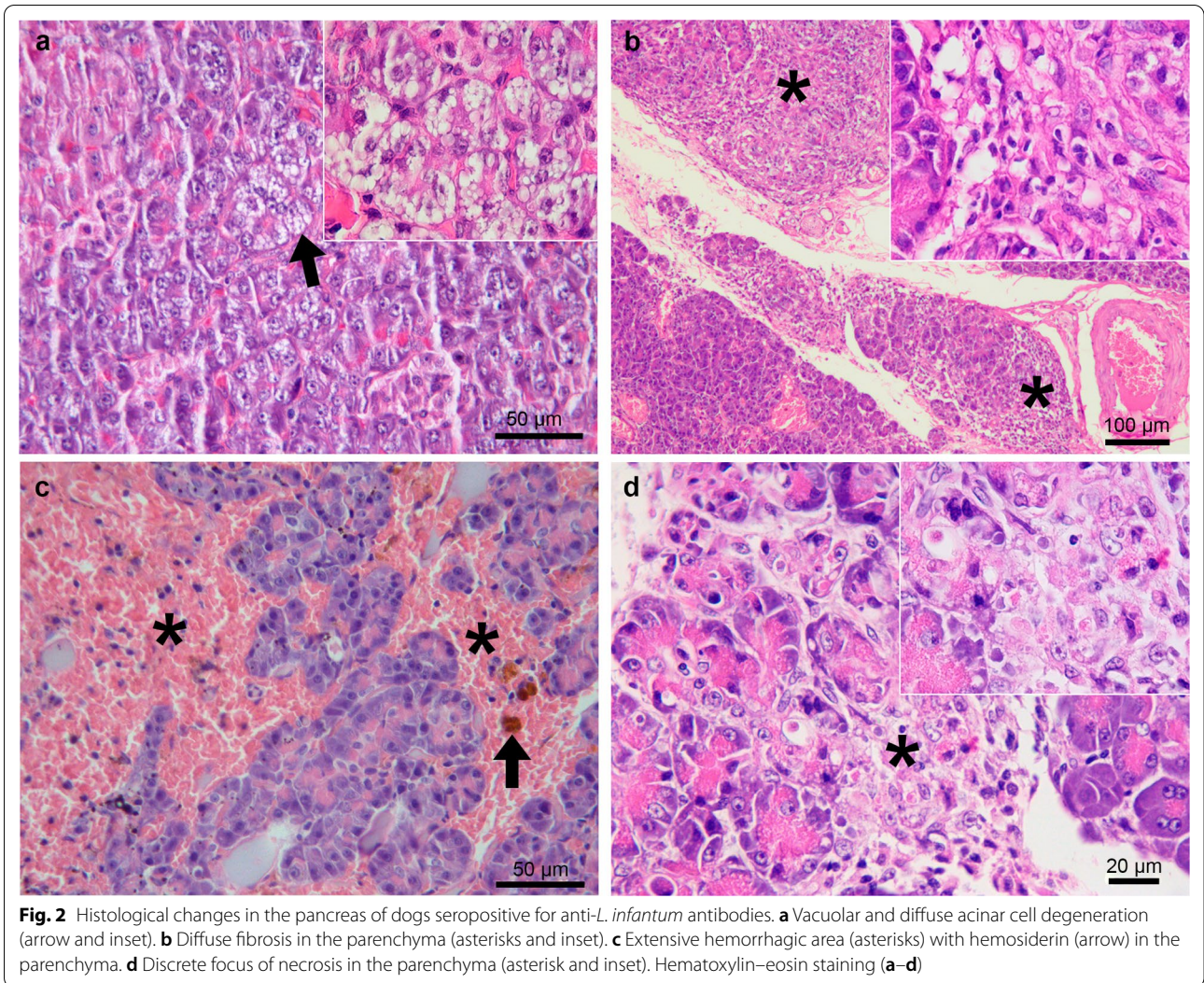


Table 2 Frequency of pancreatic histological changes observed in 143 dogs from the town of Barra Mansa, Rio de Janeiro, Brazil, that tested seropositive for anti-*Leishmania* antibodies (2012 to 2013)

Pancreatic histological changes (N = 143)	n	%
Granulomatous pancreatitis	40	28.0
Lymphoplasmacytic pancreatitis	34	23.8
Vacuolar degeneration of acinar cells	7	4.9
Fibrosis	6	4.2
Hemorrhage	3	2.1
Eosinophilic pancreatitis	1	0.7
Suppurative pancreatitis	1	0.7
Necrosis	1	0.7
No alterations	63	44.1

N, total number of examined dogs; n, number of dogs with each type of pancreatic histological alteration

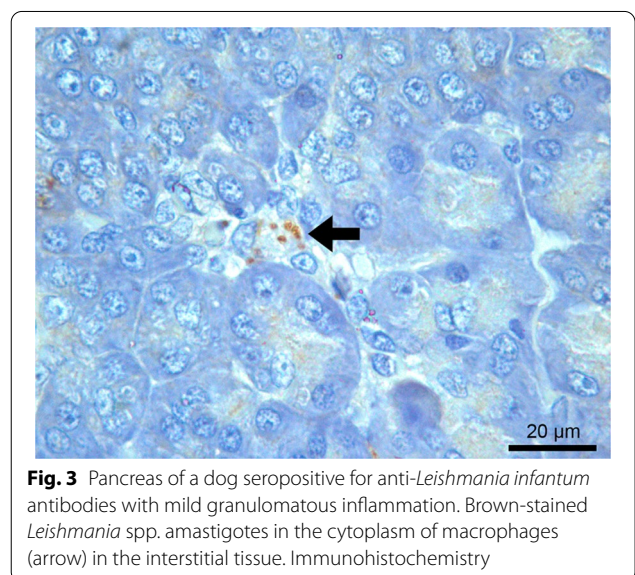


Table 3 Characteristics of dogs according to the result of IHC for the detection of *Leishmania* spp. amastigote forms in the pancreas of 143 dogs from the town of Barra Mansa, Rio de Janeiro (2012 to 2013)

Characteristics of dogs	IHC for detection of <i>Leishmania</i> amastigotes						p value
	Negative (N = 121)			Positive (N = 22)			
	n	%	95% CI (%)	n	%	95% CI (%)	
Mongrel	100	82.6	74.7–88.9	18	81.8	59.7–94.8	1.000
Breed	21	17.4	11.1–25.3	4	18.2	5.2–40.3	
Male	58	47.9	38.8–57.2	17	77.3	54.6–92.2	0.019 ^a
Female	63	52.1	42.8–61.2	5	22.7	7.8–45.4	
Up to 12 months old	8	6.6	2.9–12.6	1	4.5	0.1–22.8	0.846
1 to 7 years old	87	71.9	63.0–79.7	15	68.2	45.1–86.1	
Older than 7 years	26	21.5	14.5–29.9	6	27.3	10.7–50.2	

N number of dogs, n number of samples, IHC immunohistochemistry, 95% CI 95% confidence interval

^a Statistically significant difference at the 5% level

Table 4 Frequency of pancreatic histological changes according to the result of IHC for the detection of *Leishmania* spp. amastigote forms in 143 dogs from the town of Barra Mansa, Rio de Janeiro, Brazil (2012 to 2013)

Histological changes	IHC for detection of <i>Leishmania</i> amastigotes						p value
	Negative (N = 121)			Positive (N = 22)			
	n	%	95% CI (%)	n	%	95% CI (%)	
Granulomatous pancreatitis	23	19.0	12.4–27.1	17	77.3	54.6–92.2	0.007 ^a
Lymphoplasmacytic pancreatitis	31	25.6	18.1–34.3	3	13.6	2.9–34.9	0.004 ^a
Vacuolar degeneration of acinar cells	6	5.0	1.8–10.5	1	4.5	0.1–22.8	1.000
Fibrosis	4	3.3	0.9–8.2	2	9.1	1.1–29.5	0.248
Hemorrhage	2	1.6	0.2–7.4	1	4.5	0.1–22.8	1.000
Eosinophilic pancreatitis	1	0.8	0.0–4.5	0	0	–	– ^b
Suppurative pancreatitis	1	0.8	0.0–4.5	0	0	–	– ^b
Necrosis	1	0.8	0.0–4.5	0	0	–	– ^b
Absence of histological changes	61	50.4	41.2–59.6	2	9.1	1.1–29.2	0.009 ^a

N number of dogs, n number of samples, IHC immunohistochemistry, 95% CI 95% confidence interval

^a Statistically significant difference at the 5% level

^b Statistical analysis was not possible because of the absence of the histological change in one of the groups

dogs, two had mild granulomatous pancreatitis and five had mild ($n=3$) or severe ($n=2$) lymphoplasmacytic pancreatitis. Among the 67 dogs without pancreatitis, 2 (3.0%) had anorexia, vomiting, and/or diarrhea. Pancreatitis was not significantly associated with anorexia, vomiting, and/or diarrhea ($p=0.174$).

The median number of inflammatory cells/mm² was 175.0 (46 to 807) in dogs with pancreatitis ($n=76$). In dogs whose pancreas was positive for *Leishmania* spp. amastigotes by IHC and that simultaneously had pancreatitis ($n=20$), the median number of inflammatory cells/mm² was 167.5 (89 to 375). This number was 172 inflammatory cells/mm² (46 to 807) in dogs with pancreatitis and negative for amastigote forms of

Leishmania spp. by IHC ($n=56$). There was no statistically significant difference in the intensity of the inflammatory infiltrate between dogs with pancreatitis that tested positive and negative for *Leishmania* spp. amastigotes by IHC ($p=0.881$).

The load of *Leishmania* spp. amastigotes detected by IHC in the pancreas was classified as low, with a median number of 1.4 (0.4 to 7.2) infected macrophages/mm². The median parasite load was 2.0 (0.4 to 7.2) and 0.6 (0.4 to 7.0) infected macrophages/mm² in dogs with and without clinical signs, respectively ($p=0.412$). In dogs positive for *Leishmania* spp. by IHC, the median parasite load was 3.8 (0.6 to 7.2) infected macrophages/mm² in those with clinical signs of poor body condition or cachexia

Table 5 Frequency of clinical signs according to the result of IHC for the detection of *Leishmania* spp. amastigote forms in 143 dogs from the town of Barra Mansa, Rio de Janeiro, Brazil (2012 to 2013)

Clinical signs	IHC for detection of <i>Leishmania</i> amastigotes						p value
	Negative (N= 121)			Positive (N= 22)			
	n	%	95% CI (%)	n	%	95% CI (%)	
Poor body condition/cachexia	21	17.4	11.1–0.2	9	40.9	20.7–63.6	0.021 ^a
Skin changes	33	27.3	19.6–36.1	7	31.8	13.9–54.9	0.797
Hepato-/splenomegaly	34	28.1	20.3–37.0	6	27.3	10.7–50.2	1.000
Lymphadenomegaly	18	14.9	9.1–22.5	5	22.7	7.8–45.4	0.353
Keratoconjunctivitis	14	11.6	6.5–18.6	4	18.2	5.2–40.3	0.482
Diarrhea	7	5.8	2.3–11.6	2	9.1	1.1–29.2	0.629
Anorexia	4	3.3	0.9–8.2	1	4.5	0.1–22.8	0.572
Vomiting	3	2.5	0.5–7.1	0	0.0	0.0–15.5	– ^b
Absence of clinical signs	50	41.3	32.4–50.6	8	36.4	17.2–59.3	0.814

N number of dogs, n number of samples, IHC immunohistochemistry, 95% CI 95% confidence interval

^a Statistically significant difference at the 5% level

^b Statistical analysis was not possible because of the absence of vomiting in one of the groups

($n=9$) and 0.6 (0.6 to 7.0) infected macrophages/mm² in those without these clinical signs ($n=13$) ($p=0.272$).

Of the 143 dogs included in this study, 115 (80.4%) were positive for *L. infantum* in spleen and/or bone marrow by culture. The spleen and bone marrow were positive in 79 (68.7%) dogs, only the spleen in 22 (19.1%), and only bone marrow in 14 (12.2%). All 22 animals whose pancreas was positive for *Leishmania* sp. amastigote forms by IHC tested positive for *L. infantum* in the spleen and/or bone marrow by culture. Four (18.1%) of these 22 dogs tested positive by culture in the spleen and 18 (81.9%) in the spleen and bone marrow. Of the 121 dogs whose pancreas was negative for *Leishmania* spp. amastigote forms by IHC, 94 (77.7%) were positive for *L. infantum* in the spleen and/or bone marrow by culture. Analysis of the frequency of *L. infantum* culture positivity in spleen and/or bone marrow showed a difference of 30.9 percentage points between the group of 30 dogs with poor body condition or cachexia and the group of 113 dogs without these clinical signs (96.6% and 65.7%, respectively), although the test indicated no statistical significance ($p=0.441$).

Discussion

The frequency of *Leishmania* spp. amastigotes in the pancreas observed in the present study was slightly lower than the frequency of 22.6% reported by Guerra et al. [15] using IHC. However, this frequency was

much lower than that obtained by IHC in other organs of dogs that tested seropositive for anti-*L. infantum* antibodies by TR DPP[®] and ELISA, such as spleen (78.79 to 81.5%), bone marrow (64.6%), liver (73.6%), lymph node (76.9 to 81.5%), skin (45.6 to 65.4%), and genital tract (85.0 to 90.0%) [15, 26, 31]. Unlike organs of the mononuclear phagocyte system, skin, and genital tract, these results suggest the absence of tropism of *L. infantum* for the pancreas [15, 26, 31]. On the other hand, the frequency of pancreatic infection might be higher than that found in this study since the sensitivity of IHC for the diagnosis of *L. infantum* infection in tissues of dogs is lower than that of the polymerase chain reaction [32, 33]. Further studies using molecular techniques are needed to confirm this hypothesis.

The frequency of *Leishmania* spp. positivity in the pancreas by IHC was 54.6 percentage points higher in males compared to females. This result differs from that of other authors who found no sex predilection of infection with *L. infantum* [34–36]. Although the difference in pancreatic infection with *Leishmania* spp. between males and females was statistically significant, the small number of dogs with pancreatic infection may have influenced the result. Therefore, future studies involving a larger sample of dogs with a positive pancreas are necessary to confirm that males have a greater predisposition to pancreatic infection with *L. infantum*.

The frequency of chronic pancreatitis was high in the dogs studied, which was the most common alteration. In a retrospective study (2002–2007) of pancreatic diseases in 2832 necropsied dogs from the state of Rio Grande do Sul, Brazil, pancreatitis was also the most frequent disease [37]. However, the frequency of pancreatitis (2%) was much lower than that observed in the present study and acute pancreatitis (7%) was more common than chronic pancreatitis (5%) in dogs with pancreatic alterations [37]. A study conducted in Scotland on 200 dogs [38] also identified chronic pancreatitis as the most common alteration, but its frequency (25.5%) was half the value found in the present study. The dogs analyzed by Marcato et al. [37] and Watson et al. [38] were from regions where canine visceral leishmaniasis was not endemic, and the authors also did not report the presence of the parasite. Thus, the higher frequency of chronic pancreatitis in the present study and the fact that this alteration was more common in dogs whose pancreas tested positive for *Leishmania* spp. suggest the influence of this parasite on the occurrence of this histological alteration. However, only granulomatous pancreatitis was significantly associated with the presence of amastigote forms of *L. infantum*. This result corroborates the findings of other studies in which a granulomatous infiltrate was the type of inflammatory reaction associated with *L. infantum* infection in other organs such as skin, organs of the mononuclear phagocyte system, liver, genital tract, and central nervous system [6, 26, 39].

The results of the present study also suggest that lymphoplasmacytic pancreatitis may be associated with pancreatic infection caused by *L. infantum*. However, most cases of this type of pancreatitis, as well as the two cases of acute to subacute pancreatitis, occurred in the absence of this parasite, suggesting other causes of this alteration. Carrasco et al. [12] reported acute hemorrhagic pancreatitis in a dog with ZVL from Spain, suggesting that the lesions were due to vasculitis resulting from the deposition of immune complexes associated with *L. infantum* infection. These authors detected many *Leishmania* spp. amastigote forms in spleen and lymph nodes but not in the pancreas. Thus, despite the lack of detection of *Leishmania* spp. amastigotes in the pancreas of various cases of pancreatitis in the dogs studied here, the possibility that *Leishmania* spp. indirectly caused this alteration cannot be ruled out. In these cases of non-granulomatous pancreatitis and in the absence of detection of *Leishmania* spp., causes unrelated to ZVL and already described in dogs may have occurred. These possible causes include hemolytic anemia caused by babesiosis, dietary factors, hyperlipoproteinemia, ascending infection with intestinal bacteria, drug treatments, pancreatic duct obstruction,

toxins, hypercalcemia, pancreatic trauma, ischemia, and idiopathic causes [7, 9, 40, 41].

Poor body condition and cachexia were the only clinical signs that differed between *Leishmania*-seropositive dogs that tested positive and negative for the presence of *Leishmania* spp. amastigote forms in the pancreas. Cachexia is a common clinical sign in dogs with ZVL [39] but its etiology is not well understood. According to Koutinas and Koutinas [6], in dogs infected with *L. infantum*, cachexia would be a consequence of proteinuria caused by glomerulonephritis related to infection with this parasite. Additionally, Pearson et al. [42] linked cachexia in hamsters with experimental visceral leishmaniasis to decreased food intake and the secretion of catabolic cytokines by splenic macrophages. However, although associated with poor body condition/cachexia, pancreatic infection with *Leishmania* spp. was probably not a direct cause of these clinical signs in the present study because of the lack of association of pancreatitis and *Leishmania* spp. load in the pancreas with poor body condition/cachexia, the low frequency of clinical signs commonly associated with pancreatitis, the low parasite load in the pancreas, as well as the mild to moderate inflammatory infiltrate in 95% of cases of pancreatitis, absence of cases of atrophy, and the few cases of fibrosis, necrosis, and degeneration in the infected pancreas. These results suggest that a significant portion of the pancreas was not compromised; hence, no EPI was present. Impairment of > 80 to 90% of the secretory capacity of the pancreas would be necessary for the occurrence of EPI associated with clinical manifestations of poor body condition/cachexia [7, 43].

One limitation of this study is the fact that it was not possible to assess the extent and severity of pancreatitis throughout the pancreas because clinical examination and histopathology of only one fragment randomly selected from this organ were performed. Oliguria, renal azotemia, severely increased hepatic enzyme activities, hypocalcemia, hypoglycemia, severe hyperglycemia, hyperkalemia, leukocytosis, shock, and disseminated intravascular coagulation are considered indicators of severe pancreatitis [9, 44]. In addition, PLI assays are the most accurate serum marker for pancreatitis [44, 45]. Therefore, new studies investigating the consequences of pancreatic infection with *Leishmania* spp. in dogs submitted to necropsy should combine histopathological analysis of multiple fragments obtained from different regions of the pancreas (left lobe, right lobe, and body), physical examination, and evaluation of the dog's history together with serum PLI concentration, complete blood count, serum biochemistry profile, and urinalysis [44].

One possible explanation for the association of poor body condition and cachexia with *Leishmania* spp.

infection of the pancreas observed in the present study might be a more advanced stage of visceral leishmaniasis. The isolation of *L. infantum* by parasitological culture from the spleen and/or bone marrow of all dogs with pancreatic infection in this study suggests that the involvement of this organ is the result of an advanced stage of the disease characterized by the concomitant involvement of other viscera. Carrasco et al. [12] also observed infection of other viscera such as spleen, lymph nodes, and liver in a dog with acute pancreatitis associated with *Leishmania* spp. In the case of disseminated visceral leishmaniasis, other changes that can cause poor body condition and cachexia may have occurred, such as anorexia accompanied by malnutrition and kidney damage with loss of proteins in urine [6, 46]. As possible other indicators of a more advanced stage of visceral leishmaniasis, dogs with pancreatic infection exhibited a higher frequency of clinical signs, including dermatological and ophthalmic alterations and lymphadenomegaly. The hypothesis that chronic pancreatitis associated with *L. infantum* infection can compromise the function of this organ and progress to EPI accompanied by cachexia due to the progression of ZVL cannot be completely ruled out. This hypothesis is based on the observation that chronic pancreatitis caused by parasites is associated with cachexia in animals [47] and is generally progressive in dogs [7].

Considering that pancreatitis in dogs can be caused by infection with *L. infantum*, as demonstrated in the present study, and by some drugs used for the treatment of leishmaniasis such as meglumine antimoniate [13, 16], the pancreas should be evaluated before and during treatment of canine visceral leishmaniasis. Physical examination, evaluation of the dog's history, a complete blood count, serum biochemistry profile, and urinalysis, combined with the use of highly sensitive and specific tests such as serum PLI concentration and abdominal ultrasonography, are recommended for the diagnosis of pancreatitis in dogs [44]. If pancreatitis is detected, the use of antileishmanial drugs with no reported adverse effects in the pancreas of dogs, such as allopurinol, miltefosine, and aminosidine-allopurinol combination, reduction of the meglumine antimoniate dose, or the interruption of treatment should be considered [16, 17, 23, 48].

Conclusions

The present results demonstrate that *L. infantum* is one of the etiological agents of chronic pancreatitis in dogs, which is associated with a mild to moderate, predominantly granulomatous inflammatory infiltrate. The frequency of detection and load of this parasite are low in the pancreas. The lack of an association of poor body condition and cachexia with pancreatitis and the low

frequency of clinical signs commonly associated with pancreatitis suggest that a significant portion of the pancreas is not affected by this parasite. This result and the association of poor body condition and cachexia with a higher frequency of the parasite in the pancreas, as well as *L. infantum* parasitism in the spleen and/or bone marrow of all dogs with pancreatic infection, suggest that poor body condition and cachexia are the results of a more advanced stage of visceral leishmaniasis.

Abbreviations

ZVL: Zoonotic visceral leishmaniasis; TR DPP®: Rapid dual-path platform assay; ELISA: Enzyme-linked immunosorbent assay; IHC: Immunohistochemistry; EPI: Exocrine pancreatic insufficiency.

Acknowledgements

We thank the Municipal Health Department of Barra Mansa and the Central Laboratory of Public Health (LACEN) for their collaboration; Adilson Benedito de Almeida, Shanna Araújo dos Santos and Antonio Carlos da Silva from INI, Fiocruz, for technical assistance, and Ricardo Baptista Schmidt from the Oswaldo Cruz Institute (IOC), Fiocruz, for processing the figures. We are grateful for support from the Coordination for the Improvement of Higher Education Personnel (CAPES).

Authors' contributions

WdOK, RCM, and RVCO conceived and designed the study. WOK, RCM, AAVMJ, MdFM, LdFCM, and LCF performed the experiments. WdOK, RCM, and RVCO analyzed the data. WdOK, RCM, SAP, RVCO, FBF, and FNM wrote the manuscript. RCM, FBF, and SAP secured funding and resources. RCM supervised the study. All authors read and approved the final manuscript.

Funding

This study was supported by the state funding agency Fundação Carlos Chagas Filho de Amparo à Pesquisa do Estado do Rio de Janeiro (Grant: CNE E-26/203.069/2016 and TCT E-26/202.561/2017) and by Coordenação de Aperfeiçoamento de Pessoal de Nível Superior (CAPES), Brazil (Finance Code 001). FBF, SAP, and RCM are recipients of productivity fellowships from Conselho Nacional de Desenvolvimento Científico e Tecnológico (CNPq), Brazil. The funders had no role in study design, data collection and analysis, decision to publish, or preparation of the manuscript.

Availability of data and materials

Data supporting the conclusions of this article are included within the article.

Declarations

Ethics approval and consent to participate

This study was carried out in strict accordance with the recommendations of the Brazilian Ministry of Health and the Federal Council on Veterinary Medicine, with permission of the owners. The study protocol was approved by the Ethics Committee on Animal Use of the Oswaldo Cruz Foundation (CEUA/FIOCRUZ; Permit Numbers: LW-038/08 and LW-54/13).

Consent for publication

Not applicable.

Competing interests

The authors declare that they have no competing interest.

Author details

¹Laboratório de Pesquisa Clínica em Dermatozoonoses em Animais Domésticos, Instituto Nacional de Infectologia Evandro Chagas, Fundação Oswaldo Cruz, Av. Brasil, 4365, Rio de Janeiro, RJ 21040-360, Brazil. ²Instituto Carlos Chagas, Fundação Oswaldo Cruz, Rua Professor Algacyr Munhoz Mader, 3775, Curitiba, PR 81350-010, Brazil. ³Laboratório de Pesquisa Clínica e Vigilância em Leishmanioses, Instituto Nacional de Infectologia Evandro Chagas, Fundação

Oswaldo Cruz, Av. Brasil, 4365, Rio de Janeiro, RJ 21040-360, Brazil. ⁴Laboratório de Epidemiologia Clínica, Instituto Nacional de Infectologia Evandro Chagas, Fundação Oswaldo Cruz, Av. Brasil, 4036, Rio de Janeiro, RJ 21040-361, Brazil. ⁵Serviço de Anatomia Patológica, Instituto Nacional de Infectologia Evandro Chagas, Fundação Oswaldo Cruz, Av. Brasil, 4365, Rio de Janeiro, RJ 21040-360, Brazil. ⁶Laboratório de Imunoparasitologia, Instituto Oswaldo Cruz, Fundação Oswaldo Cruz, Av. Brasil, 4365, Rio de Janeiro, RJ 21040-360, Brazil.

Received: 25 February 2021 Accepted: 27 May 2021

Published online: 12 June 2021

References

- Ribeiro RR, Michalick MSM, Silva ME, Santos CCP, Frézard FJG, Silva SM. Canine leishmaniasis: an overview of the current status and strategies for control. *Biomed Res Int*. 2018. <https://doi.org/10.1155/2018/3296893>.
- Brasil. Ministério da Saúde. Secretaria de Vigilância em Saúde. Departamento de Vigilância das Doenças Transmissíveis. Manual de vigilância, prevenção e controle de zoonoses: normas técnicas e operacionais. Brasília: Ministério da Saúde; 2016.
- Silva DA, Madeira MF, Figueiredo FB. Geographical expansion of canine visceral leishmaniasis in Rio de Janeiro State, Brazil. *Rev Inst Med Trop Sao Paulo*. 2015;57:435–8.
- Menezes JA, Confalonieri U, Carvalho GML, Andrade-Filho JD, Margonari C. Visceral leishmaniasis: situation diagnosis from the perspective of disease control in Brazil. *J Microbiol Exp*. 2018;6:104–6.
- Brasil. Ministério da Saúde. Secretaria de Vigilância em Saúde. Casos confirmados de leishmaniose visceral, Brasil, grandes regiões e unidades federadas. 1990 a 2019. <https://antigo.saude.gov.br/images/pdf/2020/August/25/LV-Casos.pdf>. Accessed 4 January 2021.
- Koutinas AF, Koutinas CK. Pathologic mechanisms underlying the clinical findings in Canine Leishmaniosis due to *Leishmania infantum/chagasi*. *Vet Pathol*. 2014;51:527–38.
- Watson P. Pancreatitis in dogs and cats: definitions and pathophysiology. *J Small Anim Pract*. 2015;56:3–12.
- Watson P. Chronic pancreatitis in dogs. *Top Companion Anim Med*. 2012;27:133–9.
- Mansfield C. Acute pancreatitis in dogs: advances in understanding, diagnostics, and treatment. *Top Companion Anim Med*. 2012;27:123–32.
- Bostrom BM, Xenoulis PG, Newman SJ, Pool RR, Fosgate GT, Steiner JM. Chronic pancreatitis in dogs: a retrospective study of clinical clinicopathological, and histopathological findings in 61 cases. *Vet J*. 2013;195:73–9.
- German AJ. Exocrine pancreatic insufficiency in the dog: breed associations, nutritional considerations, and long-term outcome. *Top Companion Anim Med*. 2012;2012(27):104–8.
- Carrasco L, Chacón FML, Martín E, Hervás J, Molleda JM, Gómez-Villamanos JC, et al. Acute haemorrhagic pancreatitis associated with canine visceral leishmaniasis. *Vet Rec*. 1997;141:519–21.
- Aste G, Di Tommaso M, Steiner JM, Williams DA, Boari A. Pancreatitis associated with *N*-methyl-glucamine therapy in a dog with leishmaniasis. *Vet Res Commun*. 2005;29:269–72.
- Rodriguez JY, Lewis BC, Snowden KF. Distribution and characterization of *Heterobilharzia americana* in dogs in Texas. *Vet Parasitol*. 2014;203:35–42.
- Guerra JM, Fernandes NCCA, Kimura LM, Shirata NK, Magno JA, Abrantes MF, et al. Avaliação do exame imuno-histoquímico para o diagnóstico de *Leishmania* spp. em amostras de tecidos caninos. *Rev Inst Adolfo Lutz*. 2016;75:1686.
- Kasabalis D, Chatzis MK, Apostolidis K, Petanides T, Athanasiou LV, Xenoulis PG, et al. A randomized, blinded, controlled clinical trial comparing the efficacy of aminosidine (paromomycin)-allopurinol combination with the efficacy of meglumine antimoniate-allopurinol combination for the treatment of canine leishmaniosis due to *Leishmania infantum*. *Exp Parasitol*. 2020;214:107903.
- Lyra MR, Passos SRL, Pimentel MIF, Bedoya-Pacheco SJ, Valette-Rosalino CM, Vasconcellos ECF, et al. Pancreatic toxicity as an adverse effect induced by meglumine antimoniate therapy in a clinical trial for cutaneous leishmaniasis. *Rev Inst Med Trop Sao Paulo*. 2016;58:68.
- Schubach EYP, Figueiredo FB, Romero GAS. Accuracy and reproducibility of a rapid chromatographic immunoassay for the diagnosis of canine visceral leishmaniasis in Brazil. *Trans R Soc Trop Med Hyg*. 2014;108:568–74.
- Arruda MM, Figueiredo FB, Marcelino AP, Barbosa JR, Werneck GL, Noronha EF, et al. Sensitivity and specificity of parallel or serial serological testing for detection of canine *Leishmania* infection. *Mem Inst Oswaldo Cruz*. 2016;111:168–73.
- Ribeiro VM, Miranda JB, Marcelino AP, Andrade HM, Reis IA, Cardoso MS, et al. Performance of different serological tests in the diagnosis of natural infection by *Leishmania infantum* in dogs. *Vet Parasitol*. 2019;274:108920.
- Mello CX, Figueiredo FB, Mendes Junior AAV, Furtado MC, Miranda LFC, Madeira MF. Outbreak of canine visceral leishmaniasis in Barra Mansa, Rio de Janeiro, Brazil. *Rev Soc Bras Med Trop*. 2014;47:788–90.
- Pimentel MIF, Alves ELM, Silva MHFF, Moza PG, Almeida PMP, Cunha CS, et al. High visceral leishmaniasis mortality rate in Barra Mansa, a new area of visceral leishmaniasis transmission in the State of Rio de Janeiro, Brazil. *Rev Soc Bras Med Trop*. 2014;47:521–3.
- Sollano-Gallego L, Miró G, Koutinas A, Cardoso L, Pennisi MA, Ferrer L, et al. LeishVet guidelines for the practical management of canine leishmaniosis. *Parasit Vect*. 2011;4:86.
- Conselho Federal de Medicina Veterinária. Guia brasileiro de boas práticas para eutanásia em animais- conceitos e procedimentos recomendados. 2013. <http://portal.cfmv.gov.br/uploads/files/Guia%20de%20Boas%20Pr%C3%A1ticas%20para%20Eutanasia.pdf.pdf>. Accessed 25 June 2020.
- Carson FL, Cappellano CH. Histotechnology: a self-instructional text. 4th ed. Chicago: ASCP Press; 2015.
- Boechat VC, Mendes Junior AAV, Madeira MF, Ferreira LC, Figueiredo FB, Rodrigues FCC, et al. Occurrence of *Leishmania infantum* and associated histological alterations in the genital tract and mammary glands of naturally infected dogs. *Parasitol Res*. 2016;115:2371–9.
- Madeira MF, Figueiredo FB, Pinto AGS, Nascimento LD, Furtado M, Mouta-Confort E, et al. Parasitological diagnosis of canine visceral leishmaniasis: is intact skin a good target? *Res Vet Sci*. 2009;87:260–2.
- Cupolillo E, Grimaldi G Jr, Momen H. A general classification of New World *Leishmania* using numerical zymotaxonomy. *Am J Trop Med Hyg*. 1994;50:296–311.
- Wasserstein RL, Lazar NA. The ASA Statement on p-Values: context, process, and purpose. *Am Stat*. 2016;70:129–33.
- R Core Team. R: a language and environment for statistical computing. R Foundation for Statistical Computing, Vienna, Austria. 2018. <https://www.R-project.org/>. Accessed 20 Oct 2020.
- Furtado MC, Menezes RC, Kiupel M, Madeira MF, Oliveira RVC, Langohr IM, et al. Comparative study of in situ hybridization, immunohistochemistry and parasitological culture for the diagnosis of canine leishmaniosis. *Parasite Vectors*. 2015;8:620.
- Xavier SC, Andrade HM, Monte SJH, Chiarelli IM, Lima WG, Michalick MSM, et al. Comparison of paraffin-embedded skin biopsies from different anatomical regions as sampling methods for detection of *Leishmania* infection in dogs using histological, immunohistochemical and PCR methods. *BMC Vet Res*. 2006;2:17.
- Moreira MA, Luvizotto MC, Garcia JF, Corbett CE, Laurenti MD. Comparison of parasitological, immunological and molecular methods for the diagnosis of leishmaniasis in dogs with different clinical signs. *Vet Parasitol*. 2007;145:245–52.
- França-Silva JC, Costa RT, Siqueira AM, Machado-Coelho GLL, Costa CA, Mayrink W, et al. Epidemiology of canine visceral leishmaniosis in the endemic area of Montes Claros Municipality, Minas Gerais State, Brazil. *Vet Parasitol*. 2003;111:161–73.
- Gontijo CM, Melo MN. Visceral leishmaniasis in Brazil: current status, challenges and prospects. *Rev Bras Epidemiol*. 2004;7:1–12.
- Santos JML, Dantas-Torres F, Mattos MRF, Lino FRL, Andrade LSSA, Souza RCA, et al. Prevalência de anticorpos anti-*Leishmania* spp. em cães de Garanhuns, Agreste de Pernambuco. *Rev Soc Bras Med Trop*. 2010;43:41–5.
- Marcato JA, Sonne L, Tesser ES, Oliveira EC, Pavarini SP, Oliveira MB, et al. Estudo retrospectivo das doenças pancreáticas em cães necropsiados pelo Setor de Patologia Veterinária da UFRGS. In: Annals of the XIX Scientific Initiation Meeting; 2007 oct 21–26; Rio Grande do Sul, Brasil. Porto Alegre: Universidade Federal do Rio Grande do Sul. <http://hdl.handle.net/10183/35223>. Accessed 6 Apr 2021.
- Watson PJ, Roulois AJA, Sacace T, Johnston PEJ, Thompson H, Herrtage ME, et al. Prevalence and breed distribution of chronic pancreatitis at

- post-mortem examination in first-opinion dogs. *J Small Anim Pract.* 2003;44:306–12.
39. Oliveira VDC, Boechat VC, Mendes Junior AAV, Madeira MF, Ferreira LC, Figueiredo FB, et al. Occurrence of *Leishmania infantum* in the central nervous system of naturally infected dogs: parasite load, viability, co-infections and histological alterations. *PLoS ONE.* 2017;12:e0175588.
 40. Nelson RW, Maggiore AD. The exocrine pancreas. In: Nelson RW, Couto CG, editors. *Small animal internal medicine.* 6th ed. St. Louis: Elsevier; 2020. p. 805–56.
 41. Möhr AJ, Lobetti RG, Van Der Lugt JJ. Acute pancreatitis: a newly recognized potential complication of canine babesiosis. *J S Afr Vet Assoc.* 2000;71:232–9.
 42. Pearson RD, Cox G, Jeronimo SMB, Castracane J, Drew JS, Evans T, et al. Visceral leishmaniasis: a model for infection-induced cachexia. *Am J Trop Med Hyg.* 1992;47:8–15.
 43. Westermarck E, Wiberg M. Exocrine pancreatic insufficiency in dogs. *Vet Clin North Am Small Anim Pract.* 2003;33:1165–79.
 44. Xenoulis PG. Diagnosis of pancreatitis in dogs and cats. *J Small Anim Pract.* 2015;56:13–26.
 45. Trivedi S, Marks SL, Kass PH, Luff JA, Keller SM, Johnson EG, et al. Sensitivity and specificity of canine pancreas-specific lipase (cPL) and other markers for pancreatitis in 70 dogs with and without histopathologic evidence of pancreatitis. *J Vet Intern Med.* 2011;25:1241–7.
 46. Saridomichelakis MN. Advances in the pathogenesis of canine leishmaniasis: epidemiologic and diagnostic implications. *Vet Dermatol.* 1999;20:471–89.
 47. Rachid MA, Aquino Neto HM, Facury-Filho EJ, Carvalho AU, Valle GR, Vasconcelos AC. Chronic interstitial pancreatitis and chronic wasting disease caused by *Eurytrema coelomaticum* in Nelore cow. *Arq Bras Med Vet Zootec.* 2011;63:741–3.
 48. Oliva G, Roura X, Crotti A, Maroli M, Castagnaro M, Gradoni L, et al. Guidelines for treatment of leishmaniasis in dogs. *J Am Vet Med Assoc.* 2010;236:1192–8.

Publisher's Note

Springer Nature remains neutral with regard to jurisdictional claims in published maps and institutional affiliations.

Ready to submit your research? Choose BMC and benefit from:

- fast, convenient online submission
- thorough peer review by experienced researchers in your field
- rapid publication on acceptance
- support for research data, including large and complex data types
- gold Open Access which fosters wider collaboration and increased citations
- maximum visibility for your research: over 100M website views per year

At BMC, research is always in progress.

Learn more biomedcentral.com/submissions

