

Phlebotomine sand flies (Diptera, Psychodidae) from Rio de Janeiro State, Brazil: Species distribution and potential vectors of leishmaniasis

Bruno Moreira Carvalho^{1,3}, Cristina Maria Giordano Dias² & Elizabeth Ferreira Rangel¹

¹Laboratório de Transmissores de Leishmanioses, Instituto Oswaldo Cruz, Fundação Oswaldo Cruz. Avenida Brasil, 4365, Pavilhão Carlos Chagas, 5º andar, sala 43, Manguinhos, 21040-360 Rio de Janeiro-RJ, Brasil. brunomc@ioc.fiocruz.br; efrangel@ioc.fiocruz.br

²Centro de Estudos e Pesquisas em Antropozoonoses Máximo da Fonseca Filho, Secretaria de Estado de Saúde do Rio de Janeiro. Rua do Resende 118, sala 201 – Centro, 20231-092 Rio de Janeiro-RJ, Brasil. cristina.giordano@saude.rj.gov.br

³Corresponding author.

ABSTRACT. Phlebotomine sand flies (Diptera, Psychodidae) from Rio de Janeiro State, Brazil: Species distribution and potential vectors of leishmaniasis. Rio de Janeiro State, in Brazil, has endemic areas of both cutaneous and visceral leishmaniasis. In these areas, entomologic surveillance actions are highly recommended by Brazil's Ministry of Health. The present work describes the results of sand fly captures performed by the Health Department of Rio de Janeiro State between 2009 and 2011 in several municipalities. An updated species list and distribution of phlebotomine sand flies in the state are provided based on an extensive literature review. Currently, the sand fly fauna of Rio de Janeiro State has 65 species, belonging to the genera *Brumptomyia* (8 spp.) and *Lutzomyia* (57 spp.). Distribution maps of potential leishmaniasis vector species *Lutzomyia* (*Nyssomyia*) *intermedia*, *L. migonei*, *L. (N.) whitmani*, *L. (N.) flaviscutellata* and *L. (Lutzomyia) longipalpis* are provided and their epidemiological importance is discussed.

KEYWORDS. Insecta; monitoring; Phlebotominae; review; species list.

Brazil is the country with the highest estimated annual incidences of American Visceral Leishmaniasis (AVL) and American Cutaneous Leishmaniasis (ACL) (Alvar *et al.* 2012). Both AVL and ACL are widespread in the Brazilian territory, where their notification is mandatory (Brasil 2006, 2007). The current spread of these diseases in the country reveals a change in their epidemiological profiles, shifting from rural to periurban areas, with human cases recorded even in capital cities such as Campo Grande (Brazuna *et al.* 2012), Belo Horizonte (Passos *et al.* 1993) and Rio de Janeiro (Marzochi *et al.* 2009).

Back in 1912, Adolpho Lutz and Arthur Neiva described three sand fly species, speculating in their possible role as disease vectors (Lutz & Neiva 1912). Two of these species were captured in Rio de Janeiro State: i) *Lutzomyia* (*Lutzomyia*) *longipalpis* in Mangaratiba and Rio de Janeiro municipalities; ii) *Lutzomyia* (*Nyssomyia*) *intermedia* in Rio de Janeiro municipality, in the neighborhoods of Santa Teresa and Laranjeiras.

The earliest report of ACL human cases in Rio de Janeiro State was published by D'Utra e Silva (1915), but the first documented outbreak of the disease occurred later in 1921 in Rio de Janeiro municipality, with about 50 human cases recorded in "Santa Thereza Hill", an area that today corresponds to Laranjeiras, Cosme Velho and Santa Teresa neighborhoods (Cerqueira & Vasconcelos 1922). At the same time, Aragão (1922, 1927) noticed the high frequency of sand flies associated with areas of ACL human cases and demonstrated the importance of *L. (N.) intermedia* on the transmission of *Leishmania* (*Viannia*) *braziliensis*.

Other important ACL outbreaks occurred in 1974 in Jacarepaguá, also in Rio de Janeiro municipality (Lima *et al.* 1988), and in 1975 in Ilha Grande, in Angra dos Reis municipality (Araújo Filho & Coura 1981). Currently, ACL is widely spread in the state, with 1,951 autochthonous human cases recorded in the past 10 years (2002 to 2011) (Oliveira-Neto *et al.* 2000; Kawa & Sabroza 2002; Bustamante *et al.* 2009).

According to the literature, the main ACL vector in Rio de Janeiro State is *L. (N.) intermedia*, with *L. migonei* being considered as secondary vector, especially in Rio de Janeiro municipality (Araújo Filho *et al.* 1981; Rangel *et al.* 1986; Pita-Pereira *et al.* 2005). Other potential vector species have been registered in endemic areas of the state, such as *L. (N.) whitmani*, *L. (N.) flaviscutellata*, *L. (Pintomyia) fischeri* and *L. (P.) pessoai* (Araújo Filho *et al.* 1981; Rangel *et al.* 1984, 1986, 1990; Souza *et al.* 2002).

The number of human cases of AVL in the state is much lower than ACL cases. In the same 10-year period (2002 to 2011), 49 autochthonous human cases were recorded. It was in the late 1970s that the first AVL autochthonous case was recorded: a then deceased 55 year old man who lived in Bangu (Rio de Janeiro municipality) (Salazar *et al.* 1979). Currently, in the state, the disease has been registered in several municipalities, but most human cases are concentrated in Rio de Janeiro, around the Pedra Branca Massif, and in continental slopes of the Gericinó Massif, in Bangu, Senador Camará, Realengo, Campo Grande, Guaratiba, Barra de Guaratiba, Barra da Tijuca, Grumari, Vargem Grande, Camo-

rim, Curicica, Taquara and Gericinó neighborhoods (Marzochi *et al.* 2009). The main vector of *Leishmania (Leishmania) infantum chagasi* in Brazil, *L. (Lutzomyia) longipalpis*, was also already detected in Rio de Janeiro State on several studies (Araújo Filho *et al.* 1981; Souza *et al.* 1981, 2003a; Marzochi *et al.* 1985, 2009).

Brazil's Ministry of Health recommends that every leishmaniasis outbreak must be surveyed for occurrence of sand fly vectors (Brasil 2006, 2007). When planning an entomologic survey of a particular area, it is essential to know if the area has been surveyed before and which sand fly species have been detected there. Most recent studies on the distribution of sand flies from Brazil list 53 species occurring in Rio de Janeiro State (CIPA Group 1999; Aguiar & Medeiros 2003; Galati 2003). The last publication on the sand fly fauna from the state in a finer scale was Martins *et al.* (1978). Here, an updated sand fly species list and distribution in Rio de Janeiro State is provided, based on the entomologic surveillance activities of the Health Department of Rio de Janeiro State and an extensive literature review.

MATERIAL AND METHODS

Entomologic surveys have been done systematically by the Health Department of Rio de Janeiro State. Whenever a new human case of leishmaniasis is notified, sand fly captures are performed to survey the probable area of infection and detect potential vector species. Sand flies were captured with CDC (Sudia & Chamberlain 1962) or HP (Pugedo *et al.* 2005) light traps, following recommendations by Brazil's Ministry of Health (Brasil 2006, 2007). Species identification was based on the taxonomic key of Young & Duncan (1994).

Literature search was performed on the following online databases: Medline (<http://www.ncbi.nlm.nih.gov/pubmed/>), Scopus (<http://www.scopus.com>), Scielo (<http://www.scielo.org>), *Biblioteca Virtual em Saúde* (<http://regional.bvsalud.org>) and Google Scholar (<http://scholar.google.com>). Thesis databases from *Fundação Oswaldo Cruz* were also consulted (<http://www.arca.fiocruz.br>). Every reference that was not available online was searched on two libraries from *Fundação Oswaldo Cruz*: *Biblioteca de Ciências Biomédicas* (<http://www.fiocruz.br/bibcb>) and *Biblioteca de Saúde Pública* (<http://www.fiocruz.br/bibsp>). Each retrieved reference was carefully reviewed for sand fly records from Rio de Janeiro State, and a database was compiled with species records by municipality.

Distribution maps were created for potential vectors of *Leishmania* spp. and leishmaniasis human cases recorded by the Health Department of Rio de Janeiro State between years 2002 and 2011. Maps were designed with the municipality territorial division of IBGE (2010), in ArcGIS 10 software.

As expected, during this review, different species nomenclatures were found. In order to facilitate text comprehension, every sand fly species name was adapted to the nomenclature proposed by Young & Duncan (1994).

RESULTS

Between 2009 and 2011, 22 municipalities were surveyed by the Health Department of Rio de Janeiro: Armação dos Búzios, Barra Mansa, Cambuci, Campos dos Goytacazes, Cantagalo, Duas Barras, Itaguaí, Itaperuna, Itatiaia, Macaé, Miguel Pereira, Porciúncula, Porto Real, Rio Bonito, Rio de Janeiro, Santa Maria Madalena, São Fidélis, Trajano de Moraes, Três Rios, Valença, Vassouras and Volta Redonda. In these surveys, 25 sand fly species were detected: *Brumptomyia brumpti*, *B. nitzulescui*, *Lutzomyia (L.) longipalpis*, *L. (L.) ischyraantha*, *L. (L.) alencari*, *L. (S.) sordellii*, *L. edwardsi*, *L. migonei*, *L. sallesi*, *L. tupynambai*, *L. termitophila*, *L. firmatoi*, *L. walkeri*, *L. (P.) pessoai*, *L. (P.) fischeri*, *L. (P.) bianchigalatae*, *L. aragai*, *L. (T.) longispina*, *L. (N.) whitmani*, *L. (N.) intermedia*, *L. (P.) davisii*, *L. (P.) hirsuta hirsuta*, *L. (P.) ayrozai*, *L. quinquefer* and *L. oswaldoi*.

The literature review resulted in a database with 61 sand fly species from 70 references, including 64 published articles, 2 dissertations, 2 monographs, 1 research report and 1 book chapter.

Rio de Janeiro sand fly fauna consists of 65 species, from genus *Brumptomyia* (8 spp.) and *Lutzomyia* (57 spp.). The *Lutzomyia* species was represented by nine subgenus and five species groups, as well as two ungrouped species. Species list and distribution by municipality is provided next. New records for the state, when compared with previous distribution reviews (Martins *et al.* 1968; CIPA Group 1999; Aguiar & Medeiros 2003; Galati 2003) are marked with (*). Type localities are marked with (**) and doubtful records with (***)

Genus *Brumptomyia* França & Parrot, 1921 (8 spp.):

- B. avellari* (Costa Lima, 1932): Angra dos Reis (Rendeiro 2007), Bom Jesus do Itabapoana (Rezende *et al.* 2009), Cardoso Moreira (Mangabeira Filho 1942b; Martins *et al.* 1978), Itaguaí (Aguiar *et al.* 1996).
- B. brumpti* (Larrousse, 1920)*: Campos dos Goytacazes, Mangaratiba (Novo *et al.* 2013), Miguel Pereira, Petrópolis (Souza *et al.* 2002, 2005a), Rio de Janeiro (Gouveia *et al.* 2012), São Fidélis, Três Rios, Valença.
- B. cardosoi* (Barretto & Coutinho, 1941): Duque de Caxias (Martins *et al.* 1978), Magé (Aguiar *et al.* 1985c; Aguiar & Vilela 1987), Nova Iguaçu (Martins *et al.* 1978), Petrópolis (Souza *et al.* 2002, 2005a), Valença (Martins *et al.* 1978).
- B. cunhai* (Mangabeira, 1942): Angra dos Reis (Araújo Filho *et al.* 1981; Carvalho *et al.* 2013), Itaguaí (Aguiar *et al.* 1996), Maricá (Rodrigues *et al.* 2013), Niterói (Rodrigues *et al.* 2013), Nova Iguaçu (Martins *et al.* 1978), Rio de Janeiro (Souza *et al.* 2000), Saquarema (Brazil *et al.* 2011).
- B. guimaraesi* (Coutinho & Barretto, 1941): Angra dos Reis (Rendeiro 2007), Casimiro de Abreu (Souza *et al.* 2001), Itaguaí (Aguiar *et al.* 1996), Itatiaia (Afonso *et al.* 2007), Magé (Aguiar *et al.* 1985c; Aguiar & Vilela 1987), Mesquita (Oliveira-Neto *et al.* 2000; Meneses *et al.* 2002), Paraty (Carvalho *et al.* 1995, 2000), Petrópolis (Souza *et al.* 2002, 2005a), Rio de Janeiro (Cabrera *et al.* 2003), Saquarema (Brazil *et al.* 2011).
- B. nitzulescui* (Costa Lima, 1932): Angra dos Reis (Araújo Filho *et al.* 1981; Carvalho *et al.* 2013), Duque de Caxias (Martins *et al.* 1978), Itaguaí, Mesquita (Meneses *et al.* 2002), Niterói (Rodrigues *et al.* 2013), Nova Iguaçu (Martins *et al.* 1978), Rio de Janeiro (Gouveia *et al.* 2012), Valença (Martins *et al.* 1978).

- B. pintoi* (Costa Lima, 1932): Cardoso Moreira (Martins *et al.* 1978).
B. troglodytes (Lutz, 1922): Itatiaia (Afonso *et al.* 2007), Magé (Aguiar *et al.* 1985c; Aguiar & Vilela 1987), Nova Iguaçu (Martins *et al.* 1978).

Genus *Lutzomyia* França, 1924 (57 spp.):

Subgenus *L. (Lutzomyia)* França, 1924 (5 spp.):

- L. (L.) amarali* (Barretto & Coutinho, 1940): Bom Jesus do Itabapoana (Rezende *et al.* 2009), Itatiaia (Afonso *et al.* 2007), Magé (Aguiar *et al.* 1985c), Petrópolis (Martins *et al.* 1978; Souza *et al.* 2002, 2005a).
L. (L.) longipalpis (Lutz & Neiva, 1912): Angra dos Reis (Araújo Filho & Sherlock 1981; Araújo Filho *et al.* 1981; Carvalho *et al.* 2013), Armação dos Búzios, Barra Mansa, Casimiro de Abreu (Souza *et al.* 2001), Itaguaí (Aguiar *et al.* 1987, 1996), Macaé (Martins *et al.* 1978), Mangaratiba (Lutz & Neiva 1912; Novo *et al.* 2013), Mesquita (Rangel *et al.* 1990; Oliveira-Neto *et al.* 2000; Meneses *et al.* 2002), Niterói (Rodrigues *et al.* 2013), Paraty (Moutinho *et al.* 2010), Petrópolis (Souza *et al.* 2002), Rio Bonito (Brazil *et al.* 1989), Rio de Janeiro (Lutz & Neiva 1912; Fundação Oswaldo Cruz 1974; Martins *et al.* 1978; Lima *et al.* 1981; Souza *et al.* 1981, 2003b; Rangel *et al.* 1986; Cabrera *et al.* 2003; Brazil 2013), São Fidélis, Saquarema (Brazil *et al.* 2011, 2012), Valença, Volta Redonda.
*L. (L.) ischyracantha** Martins, Falcão & Silva, 1962: São Fidélis.
L. (L.) alencari Martins, Souza & Falcão, 1962: São Fidélis.
L. (L.) gasparviannai Martins, Godoy & Silva, 1962: Nova Iguaçu** (Martins *et al.* 1962b, 1978).

Subgenus *L. (Sciopemyia)* Barretto, 1962 (2 spp.):

- L. (S.) sordellii* (Shannon & Del Ponte, 1927): Armação dos Búzios, Macaé, Rio de Janeiro (Oliveira *et al.* 1995; Gouveia *et al.* 2012), Três Rios.
L. (S.) microps (Mangabeira, 1942): Angra dos Reis (Carvalho *et al.* 2013), Magé (Aguiar & Soucasaux 1984; Aguiar *et al.* 1985a; Aguiar & Vilela 1987), Mangaratiba (Martins *et al.* 1978), Niterói (Rodrigues *et al.* 2013), Nova Iguaçu** (Mangabeira Filho 1942a; Martins *et al.* 1978), Petrópolis (Martins *et al.* 1962a, 1978; Souza *et al.* 2002, 2005a).

Species Group *Migonei* Theodor, 1965 (11 spp.):

- L. lenti* (Mangabeira, 1938): Bom Jesus do Itabapoana (Rezende *et al.* 2009), Carmo (Alves 2007), Macaé (Martins *et al.* 1978), Rio de Janeiro (Oliveira *et al.* 1995).
L. edwardsi (Mangabeira, 1941): Angra dos Reis (Araújo Filho *et al.* 1981; Rendeiro 2007; Carvalho *et al.* 2013), Bom Jardim (Souza *et al.* 2003a), Duque de Caxias (Martins *et al.* 1978), Itaguaí (Aguiar *et al.* 1996), Itatiaia (Martins *et al.* 1978; Afonso *et al.* 2007), Magé (Aguiar *et al.* 1985c; Aguiar & Vilela 1987), Mangaratiba (Martins *et al.* 1978; Novo *et al.* 2013), Maricá (Rodrigues *et al.* 2013), Mesquita (Rangel *et al.* 1990), Niterói (Rodrigues *et al.* 2013), Nova Iguaçu** (Martins *et al.* 1978; Mangabeira Filho 1941), Paraty (Aguiar *et al.* 1993; Costa *et al.* 2004; Carvalho *et al.* 1995, 2000), Petrópolis (Martins *et al.* 1962a; Martins *et al.* 1978; Souza *et al.* 2002, 2005a), Rio de Janeiro (Cabrera *et al.* 2003; Souza *et al.* 2003b; Gouveia *et al.* 2012), Silva Jardim (Souza *et al.* 2001), Valença (Martins *et al.* 1978), Vassouras.
L. migonei (França, 1920): Angra dos Reis (Araújo Filho *et al.* 1981; Martins *et al.* 1978; Rendeiro 2007; Souza *et al.* 2009; Carvalho *et al.* 2013), Bom Jardim (Souza *et al.* 2003a), Bom Jesus do Itabapoana (Rezende *et al.* 2009), Cambuci, Cantagalo, Carmo (Alves 2007), Casimiro de Abreu (Souza *et al.* 2001), Duque de Caxias (Martins *et al.* 1978), Itaguaí (Aguiar *et al.* 1987, 1996), Itatiaia (Afonso *et al.* 2007), Macaé (Martins *et al.* 1978), Magé (Martins *et al.* 1978), Mangaratiba (Costa Lima 1932; Martins *et al.* 1978; Novo *et al.* 2013), Mesquita (Rangel *et al.* 1990; Oliveira-Neto *et al.* 2000; Meneses *et al.* 2002), Miguel Pereira, Niterói (Brazil *et al.* 1989; Brazil *et al.* 1991; Rodrigues *et al.* 2013), Nova Iguaçu (Martins *et al.* 1978), Paracambi (Santos 1998), Paraty (Aguiar *et al.* 1993; Carvalho *et al.* 1995, 2000; Costa *et al.* 2004; Moutinho *et al.* 2010), Petrópolis

- (Barretto & Zago Filho 1956; Martins *et al.* 1962a, 1978; Souza *et al.* 2002, 2005a), Resende (Martins *et al.* 1978), Rio Bonito (Martins *et al.* 1978; Brazil *et al.* 1989), Rio de Janeiro (Aragão 1927; Costa Lima 1932; Fundação Oswaldo Cruz 1974; Martins *et al.* 1978; Lima *et al.* 1981, 1988; Souza *et al.* 1981, 2000, 2003b; Rangel *et al.* 1986; Cabrera *et al.* 2003; Pita-Pereira *et al.* 2005; Gouveia *et al.* 2012), Santa Maria Madalena, São Fidélis, Saquarema (Brazil *et al.* 2011), Seropédica (Cardoso *et al.* 2009), Valença, Vassouras (Martins *et al.* 1978).

- L. cortezii* (Brêthes, 1923)*: Mangaratiba (Novo *et al.* 2013), Mesquita (Rangel *et al.* 1990), Niterói (Rodrigues *et al.* 2013), Nova Iguaçu (Santana 2003), Rio de Janeiro (Souza *et al.* 1981), Rio de Janeiro (Souza *et al.* 2003b).
L. sallesi (Galvão & Coutinho, 1939): Barra Mansa, Cambuci, Cantagalo, Itaperuna, Itatiaia (Afonso *et al.* 2007), Mesquita (Meneses *et al.* 2002), Niterói (Brazil *et al.* 1991), Nova Iguaçu (Santana 2003), Petrópolis (Martins *et al.* 1962a, 1978), Porciúncula, Resende (Martins *et al.* 1978), Rio de Janeiro (Oliveira *et al.* 1995; Souza *et al.* 2003b), São Fidélis, Valença.
L. tupynambai (Mangabeira, 1942): Angra dos Reis (Carvalho *et al.* 2013; Souza *et al.* 2009), Campos dos Goytacazes (Martins *et al.* 1978), Cardoso Moreira** (Mangabeira Filho 1942a), Itatiaia (Afonso *et al.* 2007), Mangaratiba (Martins *et al.* 1978), Maricá (Rodrigues *et al.* 2013), Niterói (Rodrigues *et al.* 2013), Paraty (Moutinho *et al.* 2010), Petrópolis (Martins *et al.* 1962a, 1978; Souza *et al.* 2002, 2005a), São Fidélis.
L. costalimai (Mangabeira, 1942): Bom Jardim (Souza *et al.* 2003a), Campos dos Goytacazes (Martins *et al.* 1978), Cardoso Moreira** (Mangabeira Filho 1942a), Mangaratiba (Martins *et al.* 1978), Petrópolis (Souza *et al.* 2002, 2005a), Rio de Janeiro (Souza *et al.* 2003b).
L. petropolitana Martins & Silva, 1968: Petrópolis** (Martins & Silva 1968; Martins *et al.* 1978).
L. termitophila Martins, Falcão & Silva, 1964: Angra dos Reis (Carvalho *et al.* 2013), Cambuci, Petrópolis (Souza *et al.* 2002), Petrópolis (Souza *et al.* 2005a), Rio de Janeiro (Oliveira *et al.* 1995).
L. firmatoi (Barretto, Martins & Pellegrino, 1956): Angra dos Reis (Carvalho *et al.* 2013), Bom Jardim (Souza *et al.* 2003a), Itaguaí (Aguiar *et al.* 1996), Mangaratiba (Novo *et al.* 2013), Mesquita (Rangel *et al.* 1990), Miguel Pereira, Niterói (Brazil *et al.* 1989), Nova Iguaçu (Martins *et al.* 1978), Paraty (Aguiar *et al.* 1993; Moutinho *et al.* 2010), Petrópolis (Souza *et al.* 2002, 2005a), Rio de Janeiro (Souza *et al.* 1981, 2000, 2003b; Rangel *et al.* 1986; Lima *et al.* 1988), São Pedro da Aldeia (Martins *et al.* 1978).
L. walkeri (Newstead, 1914)*: São Fidélis.

Species Group *Verrucarum* Theodor, 1965 (1 sp.):

- L. serrana* (Damasceno & Arouck, 1949): Mesquita (Meneses *et al.* 2002), Nova Iguaçu (Martins *et al.* 1978).

Subgenus *L. (Pintomyia)* Costa Lima, 1932 (3 spp.):

- L. (P.) pessoai* (Coutinho & Barretto, 1940): Angra dos Reis (Rendeiro 2007), Itaguaí (Aguiar *et al.* 1987, 1996), Itatiaia (Afonso *et al.* 2007), Magé (Aguiar & Soucasaux 1984; Aguiar *et al.* 1985a, 1985b; Aguiar & Vilela 1987), Mangaratiba (Martins *et al.* 1978), Niterói (Brazil *et al.* 1989, 1991), Paracambi (Santos 1998), Paraty (Aguiar *et al.* 1993), Petrópolis (Barretto & Zago Filho 1956; Martins *et al.* 1978; Souza *et al.* 2002, 2005a), Rio de Janeiro (Souza *et al.* 2000, 2003b), Saquarema (Brazil *et al.* 2011), Vassouras.
L. (P.) fischeri (Pinto, 1926): Angra dos Reis (Martins *et al.* 1978; Rendeiro 2007; Souza *et al.* 2009), Bom Jardim (Souza *et al.* 2003a), Bom Jesus do Itabapoana (Rezende *et al.* 2009), Cantagalo, Casimiro de Abreu (Souza *et al.* 2001), Duque de Caxias (Martins *et al.* 1978), Itaguaí (Aguiar *et al.* 1987, 1996), Magé (Martins *et al.* 1978; Aguiar & Soucasaux 1984; Aguiar *et al.* 1985a, 1985b, 1985c, 1986; Aguiar & Vilela 1987), Mangaratiba (Novo *et al.* 2013), Mesquita (Rangel *et al.* 1990), Niterói (Brazil *et al.* 1989, 1991), Nova Iguaçu (Martins *et al.*

1978), Paracambi (Santos 1998), Paraty (Aguiar *et al.* 1993; Carvalho *et al.* 1995, 2000; Costa *et al.* 2004; Moutinho *et al.* 2010), Petrópolis (Barretto & Zago Filho 1956; Martins *et al.* 1962a, 1978; Souza *et al.* 2002, 2005a), Resende (Martins *et al.* 1978), Rio Bonito (Brazil *et al.* 1989), Rio de Janeiro (Fundação Oswaldo Cruz 1974; Martins *et al.* 1978; Lima *et al.* 1981; Souza *et al.* 1981, 2000, 2003b; Rangel *et al.* 1986; Gouveia *et al.* 2012), Saquarema (Brazil *et al.* 2011), Valença, Vassouras (Martins *et al.* 1978).

L. (P.) bianchigalatae (Andrade-Filho, Aguiar, Dias & Falcão, 1999); Itaguaí (Andrade Filho *et al.* 1999); Itatiaia (Afonso *et al.* 2007); Magé (Andrade Filho *et al.* 1999); Mangaratiba (Novo *et al.* 2013); Mesquita (Meneses *et al.* 2002); Niterói (Rodrigues *et al.* 2013); Saquarema (Brazil *et al.* 2011), Valença.

Subgenus *L. (Pressatia)* Mangabeira, 1942 (1 sp.):

L. (P.) mamedei Oliveira, Afonso, Dias & Brazil, 1994: Paraty (Carvalho *et al.* 1995, 2000), Rio de Janeiro** (Oliveira *et al.* 1994, 1995).

Species Group *Rupicola* Lewis *et al.*, 1977 (1 sp.):

L. rupicola Martins, Godoy & Silva, 1962: Angra dos Reis (Carvalho *et al.* 2013), Itatiaia (Afonso *et al.* 2007), Magé (Aguiar *et al.* 1985c), Petrópolis** (Martins *et al.* 1962a, 1978).

Subgenus *L. (Psathyromyia)* Barretto, 1962 (2 spp.):

L. (P.) lutziana (Costa Lima, 1932): Cardoso Moreira (Martins *et al.* 1978), Macaé (Martins *et al.* 1978), Magé (Martins *et al.* 1978), Mesquita (Oliveira-Neto *et al.* 2000; Meneses *et al.* 2002), Nova Iguaçu (Martins *et al.* 1978), Paraty (Carvalho *et al.* 1995, 2000), Petrópolis (Souza *et al.* 2005a), Rio de Janeiro (Gouveia *et al.* 2012).

L. (P.) shannoni (Dyar, 1929): Angra dos Reis (Rendeiro 2007), Casimiro de Abreu (Souza *et al.* 2001), Itatiaia (Afonso *et al.* 2007), Magé (Aguiar & Soucasaux 1984; Aguiar *et al.* 1985a, 1985b, 1985c, 1986), Mesquita (Rangel *et al.* 1990), Nova Iguaçu (Martins *et al.* 1978), Paracambi (Santos 1998), Paraty (Aguiar *et al.* 1993), Petrópolis (Barretto & Zago Filho 1956), Petrópolis (Martins *et al.* 1962a, 1978; Souza *et al.* 2002, 2005a), Resende (Martins *et al.* 1978), Rio de Janeiro (Martins *et al.* 1978), Silva Jardim (Souza *et al.* 2001).

Species Group *Aragaoi* Theodor, 1965 (4 spp.):

L. barrettoii barrettoii (Mangabeira, 1942): Angra dos Reis (Rendeiro 2007), Casimiro de Abreu (Souza *et al.* 2001), Itaguaí (Aguiar *et al.* 1996), Magé (Aguiar *et al.* 1985c; Aguiar & Vilela 1987), Mesquita (Oliveira-Neto *et al.* 2000; Meneses *et al.* 2002), Petrópolis (Martins *et al.* 1962a, 1978; Souza *et al.* 2002, 2005a), Rio de Janeiro (Rangel *et al.* 1986), Silva Jardim (Souza *et al.* 2001).

L. pascalei (Coutinho & Barretto, 1940): Angra dos Reis (Araújo Filho *et al.* 1981; Carvalho *et al.* 2013), Itatiaia (Afonso *et al.* 2007), Mesquita (Meneses *et al.* 2002), Nova Iguaçu (Martins *et al.* 1978), Paraty (Aguiar *et al.* 1993).

L. aragaoi (Costa Lima, 1932): Angra dos Reis (Rendeiro 2007), Magé (Aguiar & Vilela 1987), Três Rios.

L. brasiliensis (Costa Lima, 1932): Cardoso Moreira (Martins *et al.* 1978).

Species Group *Lanei* Theodor, 1965 (2 spp.):

L. pelloni (Sherlock & Alencar, 1959): Angra dos Reis (Souza *et al.* 2009; Carvalho *et al.* 2013), Bom Jardim (Souza *et al.* 2003a), Duque de Caxias (Martins *et al.* 1978), Magé (Martins *et al.* 1978), Mangaratiba (Martins *et al.* 1978; Novo *et al.* 2013), Niterói (Brazil *et al.* 1989), Nova Iguaçu (Martins *et al.* 1978), Rio de Janeiro (Fundação Oswaldo Cruz 1974; Rangel *et al.* 1986; Lima *et al.* 1988; Souza *et al.* 2000, 2003b; Gouveia *et al.* 2012).

L. lanei (Barretto & Coutinho, 1941): Angra dos Reis (Araújo Filho *et al.* 1981), Itaguaí (Aguiar *et al.* 1996), Itatiaia (Afonso *et al.* 2007), Magé (Aguiar *et al.* 1985c), Mangaratiba (Martins *et al.* 1978), Maricá

(Rodrigues *et al.* 2013), Mesquita (Rangel *et al.* 1990; Meneses *et al.* 2002), Niterói (Rodrigues *et al.* 2013), Nova Iguaçu (Martins *et al.* 1978), Petrópolis (Barretto & Zago Filho 1956), Petrópolis (Martins *et al.* 1962a, 1978), Resende (Martins *et al.* 1978), Rio de Janeiro (Rangel *et al.* 1986).

Subgenus *L. (Trichopygomyia)* Barretto, 1962 (1 sp.):

L. (T.) longispina (Mangabeira, 1942)*: Valença.

Subgenus *L. (Nyssomyia)* Barretto, 1962 (3 spp.):

L. (N.) flaviscutellata (Mangabeira, 1942): Angra dos Reis (Araújo Filho *et al.* 1981; Carvalho *et al.* 2013), Nova Iguaçu (Martins *et al.* 1978), Petrópolis (Martins *et al.* 1962a, 1978).

L. (N.) whitmani (Antunes & Coutinho, 1939): Angra dos Reis (Rendeiro 2007), Bom Jardim (Souza *et al.* 2003a), Bom Jesus do Itabapoana (Rezende *et al.* 2009), Cantagalo, Carmo (Alves 2007), Casimiro de Abreu (Souza *et al.* 2001), Itaguaí (Aguiar *et al.* 1987, 1996), Itaperuna, Itatiaia, Mesquita (Rangel *et al.* 1990; Oliveira-Neto *et al.* 2000; Meneses *et al.* 2002), Miguel Pereira, Paracambi (Santos 1998), Paraty (Aguiar *et al.* 1993; Carvalho *et al.* 1995, 2000), Petrópolis (Souza *et al.* 2002, 2005a, 2005b), Rio de Janeiro (Lima *et al.* 1981; Rangel *et al.* 1986; Oliveira *et al.* 1995; Souza *et al.* 2000, 2003b; Cabrera *et al.* 2003), São Fidélis, Saquarema (Brazil *et al.* 2011), Seropédica (Cardoso *et al.* 2009), Silva Jardim (Souza *et al.* 2001), Três Rios, Valença, Volta Redonda.

L. (N.) intermedia (Lutz & Neiva, 1912): Angra dos Reis (Martins *et al.* 1978; Araújo Filho *et al.* 1981; Rendeiro 2007; Souza *et al.* 2009; Carvalho *et al.* 2013), Araruama (Martins *et al.* 1978), Bom Jardim (Souza *et al.* 2003a), Bom Jesus do Itabapoana (Rezende *et al.* 2009), Cambuci, Cantagalo, Carmo (Alves 2007), Casimiro de Abreu (Souza *et al.* 2001), Duas Barras, Itaboraí (Martins *et al.* 1978), Itaguaí (Aguiar *et al.* 1987, 1996), Itaperuna (Martins *et al.* 1978), Itaperuna, Itatiaia, Macaé (Martins *et al.* 1978), Magé (Nery-Guimarães & Bustamante 1954; Nery-Guimarães 1955; Martins *et al.* 1978), Mangaratiba (Martins *et al.* 1978; Novo *et al.* 2013), Mesquita (Rangel *et al.* 1990; Oliveira-Neto *et al.* 2000; Meneses *et al.* 2002, 2005; Afonso *et al.* 2005), Miguel Pereira, Niterói (Brazil *et al.* 1989, 1991; Rodrigues *et al.* 2013), Nova Iguaçu (Martins *et al.* 1978; Santana 2003), Paracambi (Santos 1998), Paraty (Aguiar *et al.* 1993; Santana 2003), Paracambi (Santos 1998), Paraty (Aguiar *et al.* 1993; Souza *et al.* 1995, 2000; Costa *et al.* 2004; Moutinho *et al.* 2010), Petrópolis (Barretto & Zago Filho 1956; Martins *et al.* 1962a, 1978; Souza *et al.* 2002, 2005a, 2005b), Porto Real, Resende (Martins *et al.* 1978), Rio Bonito (Martins *et al.* 1978; Brazil *et al.* 1989), Rio de Janeiro (Lutz & Neiva 1912; Aragão 1927; Costa Lima 1932; Fundação Oswaldo Cruz 1974; Martins *et al.* 1978; Lima *et al.* 1981, 1988; Souza *et al.* 1981, 2000, 2003b; Rangel *et al.* 1984, 1986; Oliveira-Neto *et al.* 1988; Oliveira *et al.* 1995; Cabrera *et al.* 2003; Pita-Pereira *et al.* 2005; Gouveia *et al.* 2012), Santa Maria Madalena, São Fidélis, Saquarema (Brazil *et al.* 2011), Seropédica (Cardoso *et al.* 2009), Silva Jardim (Souza *et al.* 2001), Trajano de Moraes, Três Rios, Valença (Martins *et al.* 1978), Vassouras (Martins *et al.* 1978), Volta Redonda.

Subgenus *L. (Psychodopygus)* Mangabeira, 1941 (10 spp.):

L. (P.) geniculata (Mangabeira, 1941): Paraty (Aguiar *et al.* 1993).

L. (P.) matosi (Barretto & Zago Filho, 1956): Itatiaia (Afonso *et al.* 2007), Petrópolis** (Barretto & Zago Filho 1956; Martins *et al.* 1978), Resende (Martins *et al.* 1978), Vassouras (Martins *et al.* 1978).

L. (P.) arthuri (Fonseca, 1936): Paraty (Aguiar *et al.* 1993), Petrópolis (Barretto & Zago Filho 1956; Martins *et al.* 1978).

L. (P.) lloydi (Antunes, 1937): Bom Jardim (Souza *et al.* 2003a), Petrópolis (Barretto & Zago Filho 1956; Souza *et al.* 2002, 2005a; Martins *et al.* 1978).

L. (P.) davisii (Root, 1934): Angra dos Reis (Souza *et al.* 2009); Duque de Caxias (Martins *et al.* 1978), Itatiaia (Afonso *et al.* 2007), Magé (Martins *et al.* 1978; Aguiar & Soucasaux 1984; Aguiar *et al.* 1985a, 1985b);

- Nova Iguaçu (Martins *et al.* 1978), Paraty (Carvalho *et al.* 1995, 2000), Valença, Vassouras (Martins *et al.* 1978).
- L. (P.) hirsuta hirsuta* (Mangabeira, 1942): Casimiro de Abreu (Souza *et al.* 2001), Itatiaia (Afonso *et al.* 2007), Magé (Aguiar & Soucasaux 1984; Aguiar *et al.* 1985a, 1985b, 1985c, 1986; Aguiar & Vilela 1987), Nova Iguaçu (Martins *et al.* 1978), Paracambi (Santos 1998), Petrópolis (Martins *et al.* 1962a, 1978), Rio de Janeiro (Souza *et al.* 2003b; Gouveia *et al.* 2012), Silva Jardim (Souza *et al.* 2001), Valença.
- L. (P.) paraensis* (Costa Lima, 1941)***: Bom Jardim (Souza *et al.* 2003a).
- L. (P.) ayrozai* (Barretto & Coutinho, 1940): Angra dos Reis (Souza *et al.* 2009; Rendeiro 2007; Carvalho *et al.* 2013), Carmo (Alves 2007), Duque de Caxias (Martins *et al.* 1978), Itatiaia (Afonso *et al.* 2007), Magé (Martins *et al.* 1978; Aguiar & Soucasaux 1984; Aguiar *et al.* 1985a, 1985b, 1985c, 1986; Aguiar & Vilela 1987), Mesquita (Meneses *et al.* 2002), Nova Iguaçu (Martins *et al.* 1978), Paraty (Aguiar *et al.* 1993), Petrópolis (Barretto & Zago Filho 1956; Martins *et al.* 1962a, 1978), Resende (Martins *et al.* 1978), Silva Jardim (Souza *et al.* 2001), Valença, Vassouras (Martins *et al.* 1978).
- L. (P.) carrerai carrerai* (Barretto, 1946): Itatiaia (Barretto 1955), Resende (Martins *et al.* 1978).
- L. (P.) fairchildi* Barretto, 1966: Itatiaia** (Barretto 1966, Martins *et al.* 1978).

Subgenus *L. (Micropygomyia)* Barretto, 1962 (3 spp.):

- L. (M.) minasensis* (Mangabeira, 1942)*: Petrópolis (Souza *et al.* 2002, 2005a).
- L. (M.) schreiberi* Martins, Falcão & Silva, 1975: Angra dos Reis (Araújo Filho *et al.* 1981; Souza *et al.* 2009; Carvalho *et al.* 2013), Duque de Caxias (Martins *et al.* 1978), Itaboraí (Martins *et al.* 1978), Itaguaí (Aguiar *et al.* 1987, 1996), Itaperuna (Martins *et al.* 1978), Macaé (Martins *et al.* 1978), Magé (Martins *et al.* 1978), Mangaratiba (Martins *et al.* 1978), Mangaratiba (Martins *et al.* 1978; Novo *et al.* 2013), Maricá (Rodrigues *et al.* 2013), Mesquita (Oliveira-Neto *et al.* 2000; Meneses *et al.* 2002), Niterói (Brazil *et al.* 1989), Niterói (Martins *et al.* 1978; Rodrigues *et al.* 2013), Nova Iguaçu (Martins *et al.* 1978), Paraty (Aguiar *et al.* 1993; Carvalho *et al.* 1995, 2000; Moutinho *et al.* 2010), Petrópolis (Martins *et al.* 1962a, cited as *L. micropygus*; Martins *et al.* 1978), Rio Bonito (Martins *et al.* 1978; Brazil *et al.* 1989), Rio de Janeiro (Martins *et al.* 1978; Rangel *et al.* 1986; Lima *et al.* 1988; Oliveira *et al.* 1995; Souza *et al.* 2000, 2003b; Cabrera *et al.* 2003; Gouveia *et al.* 2012), São Pedro da Aldeia (Martins *et al.* 1978), Teresópolis (Martins *et al.* 1978).
- L. (M.) micropyga* (Mangabeira, 1942)***: Rio de Janeiro (Fundação Oswaldo Cruz 1974; Souza *et al.* 1981).

Species Group *Oswaldoi* Theodor, 1965 (6 spp.):

- L. borgmeieri* Martins, Falcão & Silva, 1972: Itaboraí (J. D. Andrade Filho, personal communication).
- L. quinquefer* (Dyar, 1929): Angra dos Reis (Souza *et al.* 2009), Armação dos Búzios, Bom Jardim (Souza *et al.* 2003a), Bom Jesus do Itabapoana (Rezende *et al.* 2009), Cantagalo, Carmo (Alves 2007), Itaguaí (Aguiar *et al.* 1996), Itaperuna (Martins *et al.* 1978), Mangaratiba (Novo *et al.* 2013), Mesquita (Rangel *et al.* 1990; Oliveira-Neto *et al.* 2000; Meneses *et al.* 2002), Paraty (Aguiar *et al.* 1993), Petrópolis (Martins *et al.* 1978; Souza *et al.* 2002, 2005a), Rio de Janeiro (Cabrera *et al.* 2003; Souza *et al.* 2003b; Gouveia *et al.* 2012), Santa Maria Madalena, São Fidélis, Trajano de Moraes, Três Rios.
- L. longipennis* (Barretto, 1946)*: Bom Jardim (Souza *et al.* 2003a).
- L. peresi* (Mangabeira, 1942): Itatiaia (Afonso *et al.* 2007), Rio de Janeiro (Oliveira *et al.* 1995).
- L. capixaba* Dias, Falcão, Silva & Martins, 1987*: Mangaratiba (Novo *et al.* 2013).
- L. oswaldoi* (Mangabeira, 1942)*: Angra dos Reis (Souza *et al.* 2009), Bom Jardim (Souza *et al.* 2003a), Cambuci, Paraty (Carvalho *et al.* 1995, 2000), Rio de Janeiro (Souza *et al.* 2000, 2003b), Seropédica (Cardoso *et al.* 2009).

Ungrouped *Lutzomyia* Species (2 spp.):

- L. monticola* (Costa Lima, 1932): Angra dos Reis (Rendeiro 2007), Bom Jardim (Souza *et al.* 2003a), Casimiro de Abreu (Souza *et al.* 2001), Itaguaí (Aguiar *et al.* 1987, 1996), Itatiaia (Afonso *et al.* 2007), Magé (Aguiar & Soucasaux 1984; Aguiar *et al.* 1985a, 1985b, 1985c, 1986; Aguiar & Vilela 1987), Paracambi (Santos 1998), Paraty (Aguiar *et al.* 1993), Petrópolis (Barretto & Zago Filho 1956; Martins *et al.* 1978; Souza *et al.* 2002, 2005a), Resende (Martins *et al.* 1978), Rio de Janeiro (Rangel *et al.* 1986), Silva Jardim (Souza *et al.* 2001), Vassouras (Martins *et al.* 1978).
- L. misionensis* (Castro, 1959)*: Casimiro de Abreu (Souza *et al.* 2001), Itatiaia (Afonso *et al.* 2007).

Five species were considered potential leishmaniasis vectors in the state: *L. (N.) intermedia*, *L. migonei*, *L. (N.) whitmani*, *L. (N.) flaviscutellata* and *L. (L.) longipalpis*. Distribution maps of these species and leishmaniasis human cases by municipality are presented separately for ACL (Fig. 1) and AVL (Fig. 2).

DISCUSSION

Published lists of sand fly species from Brazil commonly demonstrate species distribution by state, such as studies by Aguiar & Medeiros (2003), the online database of CIPA Group (1999) and the taxonomic key of Galati (2003). Species distributions from each state are commonly published separately, like those from Minas Gerais (Andrade & Dantas-Torres 2010), São Paulo (Shimabukuro *et al.* 2010), Pernambuco (Dantas-Torres *et al.* 2010), Mato Grosso (Missawa & Maciel 2007) and Rio Grande do Norte (Ximenes *et al.* 2000). The present work is the first to summarize the distribution of sand fly species from Rio de Janeiro State.

Several epidemiological studies and entomologic surveys confirmed *L. (N.) intermedia* as the predominant species in peridomestic environment in many municipalities of Rio de Janeiro State, such as Angra dos Reis (Souza *et al.* 2009; Carvalho *et al.* 2013), Bom Jardim (Souza *et al.* 2003a), Bom Jesus do Itabapoana (Rezende *et al.* 2009), Carmo (Alves 2007), Casimiro de Abreu (Souza *et al.* 2001), Magé (Nery-Guimarães 1955), Mangaratiba (Novo *et al.* 2013), Niterói (Brazil *et al.* 1989), Paraty (Aguiar *et al.* 1993; Carvalho *et al.* 1995, 2000; Costa *et al.* 2004; Moutinho *et al.* 2010), Rio Bonito (Brazil *et al.* 1989), Rio de Janeiro (Lima *et al.* 1981; Souza *et al.* 2000; Gouveia *et al.* 2012), Saquarema (Brazil *et al.* 2011) and Seropédica (Cardoso *et al.* 2009). In addition to these cited references, the findings of naturally infected females of *L. (N.) intermedia* by *Leishmania (V.) braziliensis* (Rangel *et al.* 1984; Pita-Pereira *et al.* 2005; Rocha *et al.* 2010) and experimental infection by the same parasite (Rangel *et al.* 1992) reinforce the hypothesis that this sand fly species is the main ACL vector of Rio de Janeiro State.

Lutzomyia migonei is considered secondary vector of *Leishmania (V.) braziliensis* in Rio de Janeiro State. This was first suggested by Araújo Filho *et al.* (1981), who noticed it as the second most abundant species inside houses where ACL human cases had been recorded in Ilha Grande (Angra

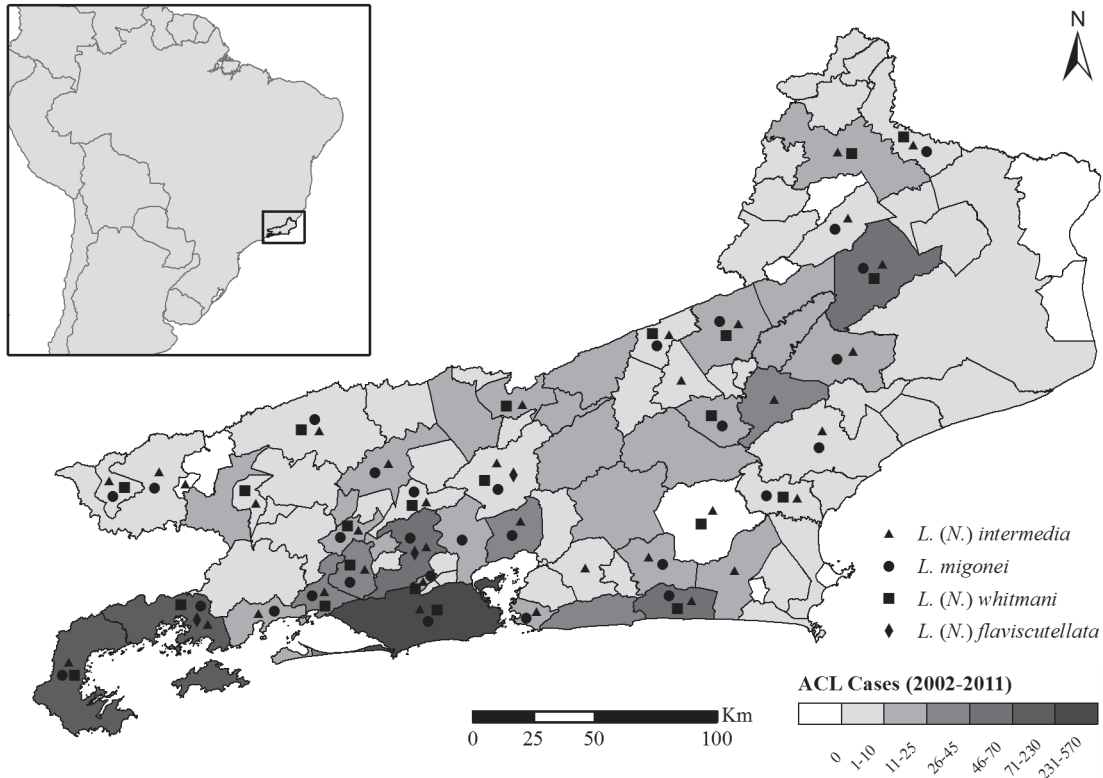


Fig. 1. Distribution of *Lutzomyia (Nyssomyia) intermedia*, *L. migonei*, *L. (N.) whitmani*, *L. (N.) flaviscutellata* and American Cutaneous Leishmaniasis (ACL) autochthonous human cases from Rio de Janeiro State, by municipality.

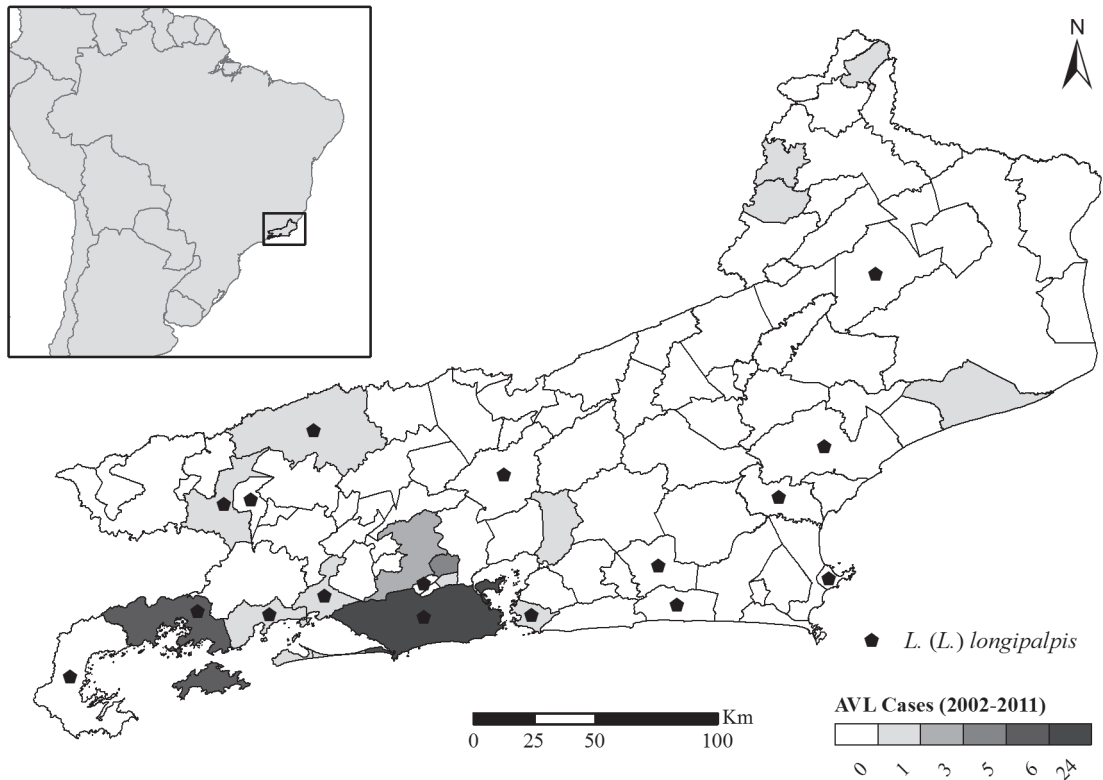


Fig. 2. Distribution of *Lutzomyia (Lutzomyia) longipalpis* and American Visceral Leishmaniasis (AVL) autochthonous human cases from Rio de Janeiro State, by municipality.

dos Reis). In Jacarepaguá (Rio de Janeiro), *L. migonei* showed high abundance and preference to feed on dogs, suggesting it would be maintaining the canine ACL cycle in the area (Rangel *et al.* 1986). In Itaguaí, Aguiar *et al.* (1996) compared the sand fly fauna of different altitude levels (100 and 300 m) and noticed that *L. migonei* had higher abundances than *L. (N.) intermedia* at 300 m, suggesting a possible involvement in ACL transmission. *Lutzomyia migonei* is commonly found in high abundances next to *L. (N.) intermedia*, as it was also shown in Rio de Janeiro (Lima *et al.* 1981; Gouveia *et al.* 2012), Mesquita (Rangel *et al.* 1990; Meneses *et al.* 2002) and Paraty (Aguiar *et al.* 1993; Carvalho *et al.* 1995, 2000; Moutinho *et al.* 2010). In the state, this species was also captured naturally infected by *Leishmania (V.) braziliensis* (Pita-Pereira *et al.* 2005).

Besides *L. (N.) intermedia* and *L. migonei*, other sand fly species found in Rio de Janeiro State show evidences of participation on ACL transmission cycles, such as *L. (N.) whitmani* (Forattini 1953; Souza *et al.* 2002; Costa *et al.* 2007), *L. (P.) fischeri* (Coutinho & Barreto 1941; Lainson 1983; Souza *et al.* 2002) and *L. (P.) pessoai* (Forattini 1954; Silva & Grunewald 1999), all of them with observed anthropophily and adaptability to domestic environments (Rangel & Lainson 2009). From these cited species, the ones that were already found naturally infected by *Leishmania (V.) braziliensis* in southeastern and southern Brazil are only *L. (N.) whitmani* and *L. (P.) fischeri* (Pita-Pereira *et al.* 2005, 2011; Rocha *et al.* 2010).

Although *L. (N.) whitmani* has been suggested as the most important vector of ACL in Brazil, being widespread in the country (Costa *et al.* 2007; Rangel & Lainson 2009), it is not very abundant in Rio de Janeiro State. Its role in the state's ACL transmission was further discussed by Souza *et al.* (2002, 2005a, 2005b) during studies in Petrópolis. The authors suggested that the two most frequent species, *L. (N.) intermedia* and *L. (N.) whitmani*, would be sharing ACL transmission throughout several months of the year, since both showed high anthropophily. In addition, *L. (N.) intermedia* was more predominant during the hotter months (December, January and February), while *L. (N.) whitmani* was more frequent during colder months (June, July and August). The authors also noticed that *L. (N.) whitmani* was more frequent in captures inside the forest and near banana plantations, while *L. (N.) intermedia* predominated in peridomestic environments.

Lutzomyia (Nyssomyia) flaviscutellata is the main vector of *Leishmania (L.) amazonensis*, causative agent of Diffuse Cutaneous Leishmaniasis (DCL) (Lainson & Shaw 1968; Ward *et al.* 1977; Lainson *et al.* 1987; Rangel & Lainson 2009). In 2007, Rio de Janeiro State's first autochthonous DCL human case was detected in Paraty (Azeredo-Coutinho *et al.* 2007). Until today, there are no records of other human cases in the state, although in São Paulo State, dogs and rodents (*Akodon* sp.) were detected infected with *Leishmania (L.) amazonensis* (Tolezano *et al.* 1988, 2007). *Lutzomyia (N.) flaviscutellata* is widespread in Brazil, and frequently associated with primary and secondary forests of Amazon, Atlantic Forest and Cerrado

biomes. It is strongly attracted to rodents, but not so much to humans (Shaw & Lainson 1968; Shaw *et al.* 1972; Rangel & Lainson 2009), explaining why captures with Disney traps (Disney 1966), using rodents as baits, are often more successful in capturing this species (Araújo Filho *et al.* 1981; Dorval *et al.* 2010). In Rio de Janeiro State, *L. (N.) flaviscutellata* was found only in Angra dos Reis (Araújo Filho *et al.* 1981; Carvalho *et al.* 2013), Nova Iguaçu (Martins *et al.* 1978) and Petrópolis (Martins *et al.* 1962a, 1978). Its real distribution and abundance is underestimated, probably because there is only one published study that used Disney traps to capture sand flies in the state (Araújo Filho *et al.* 1981). Even with its major occurrence on north and northeast Brazil, the species was also found in São Paulo State (Gomes & Galati 1989, Gomes 1994), in Atlantic Forest areas very similar to those in Rio de Janeiro State.

Lutzomyia (Lutzomyia) longipalpis is highly adaptable to man-modified environments, probably because it feeds on a wide variety of vertebrate hosts and is highly anthropophilic (Lainson & Rangel 2005; Afonso *et al.* 2012). The presence of this species in urban areas of Brazil is a determinant factor for AVL urbanization process (Rangel & Vilela 2008; Werneck 2008). In Rio de Janeiro State, this species have been recorded in low abundances on several studies, frequently in rural or periurban areas (Araújo Filho & Sherlock 1981; Araújo Filho *et al.* 1981; Rangel *et al.* 1986, 1990; Souza *et al.* 1981, 2001, 2002; Cabrera *et al.* 2003; Carvalho *et al.* 2013). Recently, *L. (L.) longipalpis* was detected in an urban area of Rio de Janeiro City (in the locality of Caju). This finding, coupled with the record of canine VL cases and one human AVL case, demonstrates the first AVL focus in an urban area of Rio de Janeiro City (Brazil 2013).

In some AVL areas of the state, *L. (L.) longipalpis* could not be found (Souza *et al.* 2000, 2009). In these areas, Souza *et al.* (2003b) hypothesized the possible epidemiologic importance of *L. migonei* in maintaining and expanding canine infection, based on its strong attraction to dogs. *Lutzomyia migonei* shows evidences of AVL transmission in Pernambuco State, where it was found naturally infected by *Leishmania (L.) infantum chagasi* in areas without records of *L. (L.) longipalpis* (Carvalho *et al.* 2010). Definitely more studies are necessary to test the hypothesis of this alternative AVL vector species in Rio de Janeiro State.

The records of *L. (P.) paraensis* and *L. (M.) micropyga* in Rio de Janeiro State should be interpreted with caution, since both are considered Amazonian species (Young & Duncan 1994).

The entomologic records from the Health Department of the State contributed with knowledge of the sand fly fauna from 22 municipalities. About 60% of these were not surveyed in scientific studies, such as São Fidélis. If this municipality had not been surveyed by the Health Department of the State, three sand fly species would not have been registered in Rio de Janeiro State: *Lutzomyia (L.) ischyraantha*, *L. (L.) alencari* and *L. walkeri*. This evidence reinforces the importance of collaboration between researchers and health department professionals, so that these data reach the scien-

tific literature. Leishmaniasis control actions are mainly based on entomologic surveillance, so it is fundamental that endemic areas be constantly surveyed.

This list shows records of 65 sand fly species from 46 municipalities. Since this corresponds to only 50% of the 92 municipalities of Rio de Janeiro State, some other species could certainly be found in other areas with future studies.

ACKNOWLEDGMENTS

To Patrícia Ganzenmüller Moza and Carlos Henrique Assis, from the Health Department of Rio de Janeiro State, for providing data on leishmaniasis human cases. To José Dilermando Andrade Filho, from *Centro de Pesquisas René Rachou, Fundação Oswaldo Cruz*, for giving information about specimens deposited in *Coleção de Referência Nacional e Internacional de Flebotomíneos* (CRNIF-CPqRR). To two anonymous reviewers, who made significant contributions to this manuscript. To Mariana Vale, from the Ecology Department of Federal University of Rio de Janeiro for English review. To *Coordenação de Aperfeiçoamento de Pessoal de Nível Superior* (CAPES) for funding.

REFERENCES

- Afonso, M.M.S., Costa, W.A., Azevedo, A.C.R., Costa, S.M., Vilela, M.L. & Rangel, E.F. 2007. Data on sand fly fauna (Diptera, Psychodidae, Phlebotominae) in Itatiaia National Park, Rio de Janeiro State, Brazil. *Cadernos de Saúde Pública* 23: 725–730.
- Afonso, M.M.S., Gomes, A.C., Meneses, C.R.V. & Rangel, E.F. 2005. Studies on the feeding habits of *Lutzomyia (N.) intermedia* (Diptera, Psychodidae), vector of cutaneous leishmaniasis in Brazil. *Cadernos de Saúde Pública* 21: 1816–1820.
- Afonso, M.M.S., Chaves, S.A.M. & Rangel, E.F. 2012. Evaluation of feeding habits of haematophagous insects, with emphasis on Phlebotominae (Diptera: Psychodidae), vectors of Leishmaniasis – Review. *Trends in Entomology* 8: 125–136.
- Aguiar, G.M. & Medeiros, W.M. 2003. Distribuição regional e habitats das espécies de flebotomíneos do Brasil, p. 207–255. In: Rangel, E.F. & Lainson, R. (eds). *Flebotomíneos do Brasil*. Rio de Janeiro, Editora Fiocruz, 368 p.
- Aguiar, G.M., Medeiros, W.M., De Marco, T.S., Santos, S.C. & Gambardella S. 1996. Ecologia dos flebotomíneos da Serra do Mar, Itaguaí, Estado do Rio de Janeiro, Brasil. I – A fauna flebotomínica e prevalência pelo local e tipo de captura (Diptera, Psychodidae, Phlebotominae). *Cadernos de Saúde Pública* 12: 195–206.
- Aguiar, G.M., Medeiros, W.M., Santos, T.G., Klein, A.F.L. & Ferreira, V.A. 1993. Ecology of the sandflies in a recent focus of cutaneous leishmaniasis in Paraty, littoral of Rio de Janeiro State (Diptera, Psychodidae, Phlebotominae). *Memórias do Instituto Oswaldo Cruz* 88: 339–340.
- Aguiar, G.M., Schuback, P.D., Vilela, M.L. & Azevedo, A.C.R. 1985a. Aspectos da ecologia dos flebotomos do Parque Nacional da Serra dos Órgãos, Rio de Janeiro. II. Distribuição vertical (Diptera, Psychodidae, Phlebotominae). *Memórias do Instituto Oswaldo Cruz* 80: 187–194.
- Aguiar, G.M. & Soucasaux, T. 1984. Aspectos da ecologia dos flebotomos do Parque Nacional da Serra dos Órgãos, Rio de Janeiro. I – Frequência mensal em isca humana (Diptera, Psychodidae, Phlebotominae). *Memórias do Instituto Oswaldo Cruz* 79: 197–209.
- Aguiar, G.M. & Vilela, M.L. 1987. Aspects of the ecology of sandflies at the Serra dos Órgãos National Park, State of Rio de Janeiro. VI. Shelters and breeding places (Diptera, Psychodidae, Phlebotominae). *Memórias do Instituto Oswaldo Cruz* 82: 585–586.
- Aguiar, G.M., Vilela, M.L. & Lima, R.B. 1987. Ecology of the sandflies of Itaguaí, an area of cutaneous leishmaniasis in the State of Rio de Janeiro. Food Preferences (Diptera, Psychodidae, Phlebotominae). *Memórias do Instituto Oswaldo Cruz* 82: 583–584.
- Aguiar, G.M., Vilela, M.L., Schuback, P., Soucasaux, T. & Azevedo, A.C.R. 1985b. Aspectos da ecologia dos flebotomos do Parque Nacional da Serra dos Órgãos, Rio de Janeiro. III. Frequência horária (Diptera, Psychodidae, Phlebotominae). *Memórias do Instituto Oswaldo Cruz* 80: 339–348.
- Aguiar, G.M., Vilela, M.L., Schuback, P.D.A., Soucasaux, T. & Azevedo, A.C.R. 1985c. Aspectos da ecologia dos flebotomos do Parque Nacional da Serra dos Órgãos, Rio de Janeiro. IV. Frequência mensal em armadilhas luminosas (Diptera, Psychodidae, Phlebotominae). *Memórias do Instituto Oswaldo Cruz* 80: 465–482.
- Aguiar, G.M., Vilela, M.L. & Soucasaux, T. 1986. Aspectos da ecologia dos flebotomos do Parque Nacional da Serra dos Órgãos, Rio de Janeiro. V – Preferências alimentares (Diptera, Psychodidae, Phlebotominae). *Memórias do Instituto Oswaldo Cruz* 81: 477–479.
- Alvar, J., Vélez, I.D., Bern, C., Herrero, M., Desjeux, P., Cano, J., Jannin, J. & Boer, M. 2012. Leishmaniasis worldwide and global estimates of its incidence. *PLoS ONE* 7: e35671.
- Alves, J.R.C. 2007. Espécies de *Lutzomyia* França (Diptera: Psychodidae, Phlebotominae) em área de leishmaniose tegumentar no município de Carmo, RJ. *Neotropical Entomology* 36: 593–596.
- Andrade, A.J. & Dantas-Torres, F. 2010. Phlebotomine sand flies (Diptera: Psychodidae) of the State of Minas Gerais, Brazil. *Neotropical Entomology* 39: 115–123.
- Andrade Filho, J.D., Aguiar, G.M., Dias, E.S. & Falcão, A.L. 1999. Description of *Lutzomyia bianchigalatae* n. sp. a sand fly within the subgenus *Pintomyia* Costa Lima 1932 (Diptera: Psychodidae). *Memórias do Instituto Oswaldo Cruz* 94: 757–762.
- Aragão, H.B. 1922. Transmissão da leishmaniose no Brasil pelo *Phlebotomus intermedius*. *Brasil Médico* 36: 129–130.
- Aragão, H.B. 1927. Leishmaniose tegumentar e sua transmissão pelos flebotomos. *Memórias do Instituto Oswaldo Cruz* 20: 177–186.
- Araújo Filho, N.A. & Coura, J.R. 1981. Leishmaniose tegumentar americana na Ilha Grande, Rio de Janeiro. I. Investigação epidemiológica clínica e laboratorial. *Revista da Sociedade Brasileira de Medicina Tropical* 14: 135–143.
- Araújo Filho, N.A. & Sherlock, I.A. 1981. Nota sobre a presença da *Lutzomyia longipalpis* (Lutz & Neiva, 1912) na Ilha Grande, Estado do Rio de Janeiro, Brasil. *Revista da Sociedade Brasileira de Medicina Tropical* 14: 81–83.
- Araújo Filho, N.A., Sherlock, I.A. & Coura, J.R. 1981. Leishmaniose tegumentar americana na Ilha Grande, Rio de Janeiro. V. Observações sobre a biologia dos transmissores em condições naturais. *Revista da Sociedade Brasileira de Medicina Tropical* 14: 171–183.
- Azeredo-Coutinho, R.B.G., Conceição-Silva, F., Schubach, A., Cupolillo, E., Quintela, L.P., Madeira, M.F., Pacheco, R.S., Valet-Rosalino, C.M. & Mendonça, S.C.F. 2007. First report of diffuse cutaneous leishmaniasis and *Leishmania amazonensis* infection in Rio de Janeiro State, Brazil. *Transactions of the Royal Society of Tropical Medicine and Hygiene* 101: 735–737.
- Barretto, M.P. 1955. Nova espécie de flebotomo do Brasil (Diptera, Psychodidae). *Revista do Hospital das Clínicas* 10: 247–249.
- Barretto, M.P. 1966. Estudos sobre flebotomíneos Americanos. I. Notas sobre espécies de *Lutzomyia* França, subgênero *Psychodopygus* Mangabeira, 1941, com a descrição de uma nova espécie (Diptera, Psychodidae). *Papéis Avulsos, São Paulo* 18: 133–146.
- Barretto, M.P. & Zago Filho, H. 1956. Flebotomos encontrados em Petrópolis, R. J., com a descrição de uma nova espécie (Diptera, Psychodidae). *Revista Brasileira de Entomologia* 5: 177–186.
- Brasil: Ministério da Saúde: Secretaria de Vigilância em Saúde. Departamento de Vigilância Epidemiológica. 2006. *Manual de vigilância e controle da leishmaniose visceral*. Brasília, Editora do Ministério da Saúde, 120 p.
- Brasil: Ministério da Saúde: Secretaria de Vigilância em Saúde. Departamento de Vigilância Epidemiológica. 2007. *Manual de vigilância*

- da leishmaniose tegumentar americana. 2ª. ed., Brasília, Editora do Ministério da Saúde, 182 p.
- Brazil, R.P. 2013. The dispersion of *Lutzomyia longipalpis* in urban areas. **Revista da Sociedade Brasileira de Medicina Tropical** 46: 263–264.
- Brazil, R.P., Brazil, B.G., Gouvea, M.C., Almeida, D.C., Oliveira, S.M.P. & Menezes, J.A. 1989. Epidemiological studies in cutaneous leishmaniasis in the State of Rio de Janeiro, Brazil. Domestic and peridomestic sandfly Fauna, p. 159–164. In: Hart, D.T. (ed.). **Leishmaniasis: The current status and new strategies for control**. New York, Plenum Press, 1041 p.
- Brazil, R.P., Almeida, D.C., Brazil, B.G. & Mamede, S.M.P.O. 1991. Chicken house as a resting site of sandflies in Rio de Janeiro, Brazil. **Parassitologia** 33 (Suppl. 1): 113–117.
- Brazil, R.P., Pontes, M.C.Q., Passos, W.L., Fuzari, A.A. & Brazil, B.G. 2012. *Lutzomyia longipalpis* (Diptera: Psychodidae: Phlebotominae) in the region of Saquarema: potential area of visceral leishmaniasis transmission in the State of Rio de Janeiro, Brazil. **Revista da Sociedade Brasileira de Medicina Tropical** 45: 120–121.
- Brazil, R.P., Pontes, M.C.Q., Passos, W.L., Rodrigues, A.A.F. & Brazil, B.G. 2011. The sand fly fauna (Psychodidae: Phlebotominae) in the region of Saquarema, State of Rio de Janeiro, Brazil, an endemic area of cutaneous leishmaniasis transmission. **Journal of Vector Ecology** 36 (Suppl. 1): S95–S98.
- Brazuna, J.C.M., Silva, E.A., Brazuna, J.M., Domingos, I.H., Chaves, N., Honer, M. R., Onselen, V.J. & Oliveira, A.L.L. 2012. Profile and geographic distribution of reported cases of visceral leishmaniasis in Campo Grande, State of Mato Grosso do Sul, Brazil, from 2002 to 2009. **Revista da Sociedade Brasileira de Medicina Tropical** 45: 601–606.
- Bustamante, M.C.F.S., Pereira, M.J.S., Schubach, A.O. & Fonseca, A.H. 2009. Epidemiological profile of cutaneous leishmaniasis in an endemic region in the State of Rio de Janeiro, Brazil. **Revista Brasileira de Parasitologia Veterinária** 18: 34–40.
- Cabrera, M.A.A., Paula, A.A., Camacho, L.A.B., Marzochi, M.C.A., Xavier, S.C., Silva, A.V.M. & Jansen, A.M. 2003. Canine visceral leishmaniasis in Barra de Guaratiba, Rio de Janeiro, Brazil: Assessment of risk factors. **Revista do Instituto de Medicina Tropical de São Paulo** 45: 79–83.
- Cardoso, P.G., Souza, M.B., Sanavria, A., Meira, A.M. & Meródio, J.C. 2009. Flebotomos de áreas com ocorrências de casos humanos de leishmaniose tegumentar americana no Município de Seropédica, Estado do Rio de Janeiro. **Revista da Sociedade Brasileira de Medicina Tropical** 42: 146–150.
- Carvalho, B.M., Maximo, M., Costa, W.A., Santana, A.L.F., Costa, S.M., Rego, T.A.N.C., Pita-Pereira, D., & Rangel E.F. 2013. Leishmaniasis transmission in an ecotourism area: potential vectors in Ilha Grande, Rio de Janeiro State, Brazil. **Parasites & Vectors** 6: 325.
- Carvalho, M.R., Valença, H.F., Silva, F.J., Pita-Pereira, D., Araújo Pereira, T., Britto, C., Brazil, R.P. & Brandão Filho, S.P. 2010. Natural *Leishmania infantum* infection in *Migonemyia migonei* (França, 1920) (Diptera: Psychodidae: Phlebotominae) the putative vector of visceral leishmaniasis in Pernambuco State, Brazil. **Acta Tropica** 116: 108–110.
- Carvalho, R.W., Serra-Freire, N.M. & Souza, M.B. 1995. Fauna de flebotomíneos da Ilha do Araújo, Município de Paraty-RJ. 1.- Diversidades e Aspectos do Comportamento. **Parasitologia al Dia** 19: 104–112.
- Carvalho, R.W., Souza, M.B., Serra-Freire, N.M., Pontes, C.S., Conceição, N.F., Almeida, A.B. & Campos, V.S. 2000. Flebotomíneos (Diptera: Psychodidae) da Ilha do Araújo, Município de Paraty, Estado do Rio de Janeiro, Brasil. 2- Comportamento da fauna frente a variação horária e ao ciclo lunar. **Entomologia y Vectores** 7: 143–153.
- Cerqueira, A.C. & Vasconcelos, A. 1922. A leishmaniose nesta capital. **Boletim Sanitário do Rio de Janeiro** 1: 35–47.
- CIPA Group. 1999. Computer-aided Identification of Phlebotomine Sandflies of America. Available at: <http://cipa.snvjussieu.fr/>. (accessed 17 January 2013).
- Costa, C.M., Moutinho, F.F.B. & Bruno, S.F. 2004. A experiência do município de Paraty (Rio de Janeiro, Brasil) na prevenção e controle da leishmaniose tegumentar americana. **Parasitologia Latinoamericana** 59: 110–114.
- Costa Lima, A. 1932. Sobre os phlebotomos americanos (Diptera: Psychodidae). **Memórias do Instituto Oswaldo Cruz** 26: 15–69.
- Costa, S.M., Cechinel, M., Bandeira, V., Zannuncio, J.C., Lainson, R. & Rangel, E.F. 2007. *Lutzomyia (Nyssomyia) whitmani* s.l. (Antunes & Coutinho, 1939) (Diptera: Psychodidae: Phlebotominae) geographical distribution and the epidemiology of American cutaneous leishmaniasis in Brazil. Mini review. **Memórias do Instituto Oswaldo Cruz** 102: 149–153.
- Coutinho, J.O. & Barretto, M.P. 1941. Dados bionômicos sobre o “*Phlebotomus fischeri*” Pinto, 1926 (Diptera, Psychodidae). **Revista Brasileira de Biologia** 1: 423–429.
- Dantas-Torres, F., Andrade, A.J., Tenório, K.E.R., Andrade Filho, J.D., Balbino, V.Q. & Brandão-Filho, S.P. 2010. Phlebotomine sand flies (Diptera: Psychodidae: Phlebotominae) in the State of Pernambuco. **Revista da Sociedade Brasileira de Medicina Tropical** 43: 733–736.
- Disney, R.H.L. 1966. A trap for phlebotomine sandflies attracted to rats. **Bulletin of Entomological Research** 56: 445–451.
- Dorval, M.E.C., Alves, T.P., Cristaldo, G., Rocha, H.C., Alves, M.A., Oshiro, E.T., Oliveira, A.G., Brazil, R.P., Galati, E.A.B. & Cunha, R.V. 2010. Sand fly captures with Disney traps in area of occurrence of *Leishmania (Leishmania) amazonensis* in the State of Mato Grosso do Sul, mid-western Brazil. **Revista da Sociedade Brasileira de Medicina Tropical** 43: 491–495.
- D’Utra e Silva, O. 1915. Sobre a leishmaniose tegumentar e seu tratamento. **Memórias do Instituto Oswaldo Cruz** 7: 213–248.
- Forattini, O.P. 1954. Nota sobre a biologia de *Phlebotomus* (Diptera: Psychodidae) em região da Bacia do Rio Paraná (Brasil). **Arquivos da Faculdade de Higiene e Saúde Pública da Universidade de São Paulo** 8: 15–136.
- Forattini, O.P. 1953. Nota sobre criadouros naturais de flebotomos em dependências peri-domiciliares no estado de São Paulo. **Arquivos da Faculdade de Higiene e Saúde Pública da Universidade de São Paulo** 7: 157–168.
- Fundação Oswaldo Cruz. 1974. Relatório do grupo de trabalho coordenador das atividades de estudo e controle da Leishmaniose Tegumentar Americana na área de atuação do posto Samuel Libânio, Jacarepaguá. Rio de Janeiro, Fundação Oswaldo Cruz, 25 p.
- Galati, E.A.B. 2003. Morfologia e taxonomia: classificação de Phlebotominae, p. 23–51. In: Rangel, E.F. & Lainson, R. (eds). **Flebotomíneos do Brasil**. Rio de Janeiro, Editora Fiocruz, 368 p.
- Gomes, A.C. 1994. Sand fly vectorial ecology in the State of São Paulo. **Memórias do Instituto Oswaldo Cruz** 89: 457–460.
- Gomes, A.C. & Galati, E.A.B. 1989. Aspectos ecológicos da leishmaniose tegumentar americana. 7. Capacidade vectorial flebotomínea em ambiente florestal primário do sistema da Serra do Mar, região do Vale do Ribeira, estado de São Paulo, Brasil. **Revista de Saúde Pública** 23: 136–142.
- Gouveia, C., Oliveira, R.M., Zwetsch, A., Motta-Silva, D., Carvalho, B.M., Santana, A.F. & Rangel, E.F. 2012. Integrated tools for American cutaneous leishmaniasis surveillance and control: Intervention in an endemic area in Rio de Janeiro, RJ, Brazil. **Interdisciplinary Perspectives on Infectious Diseases** 2012: 568312.
- IBGE: Instituto Brasileiro de Geografia e Estatística. 2010. Malha digital municipal 2010. Available from: <http://www.ibge.gov.br>. (accessed 4 Mar 2013).
- Kawa, H. & Sabroza, P.C. 2002. Especialização da leishmaniose tegumentar na cidade do Rio de Janeiro. **Cadernos de Saúde Pública** 18: 853–865.
- Lainson, R. 1983. The American leishmaniasis: some observation on their ecology and epidemiology. **Transactions of the Royal Society of Tropical Medicine and Hygiene** 77: 569–596.
- Lainson, R. & Rangel, E.F. 2005. *Lutzomyia longipalpis* and the eco-epidemiology of American visceral leishmaniasis, with particular reference to Brazil – A review. **Memórias do Instituto Oswaldo Cruz** 100: 811–827.
- Lainson, R., Ryan, L. & Shaw, J.J. 1987. Infective stages of *Leishmania* in the sandfly vector and some observations on the mechanism of transmission. **Memórias do Instituto Oswaldo Cruz** 82: 421–424.

- Lainson, R. & Shaw, J.J. 1968. Leishmaniasis in Brazil: I. Observations on enzootic rodent leishmaniasis – Incrimination of *Lutzomyia flaviscutellata* (Mangabeira) as the vector in the lower Amazonian Basin. **Transactions of the Royal Society of Tropical Medicine and Hygiene** **62**: 385–395.
- Lima, L.C.R., Marzochi, M.C.A. & Sabroza, P.C. 1981. Flebotomíneos em área de ocorrência de leishmaniose tegumentar no bairro de Campo Grande, Rio de Janeiro, Brasil. **Revista Brasileira de Malariologia e Doenças Tropicais** **33**: 64–74.
- Lima, L.C., Marzochi, M.C.A., Sabroza, P.C. & Souza, M.A. 1988. Observações sobre a leishmaniose tegumentar, cinco anos após profilaxia. **Revista de Saúde Pública** **22**: 73–77.
- Lutz, A. & Neiva, A. 1912. Contribuição para o conhecimento das espécies do gênero *Phlebotomus* existentes no Brasil. **Memórias do Instituto Oswaldo Cruz** **4**: 84–95.
- Mangabeira Filho, O. 1941. Segunda Contribuição ao Estudo dos *Flebotomus*. *Flebotomus edwardsi* n. sp. (Diptera: Psychodidae). **Memórias do Instituto Oswaldo Cruz** **36**: 201–217.
- Mangabeira Filho, O. 1942a. Sétima Contribuição ao Estudo dos *Flebotomus* (Diptera: Psychodidae). Descrição dos machos de 24 novas espécies. **Memórias do Instituto Oswaldo Cruz** **37**: 111–218.
- Mangabeira Filho, O. 1942b. Oitava Contribuição ao Estudo dos *Flebotomus* (Diptera: Psychodidae). *Flebotomus (Brumptomyia) avellari* Costa Lima, 1932. **Memórias do Instituto Oswaldo Cruz** **37**: 225–261.
- Martins, A.V., Godoy Jr., T.L. & Silva, J.E. 1962a. Nota sobre os flebotomos de Petrópolis, estado do Rio de Janeiro, com a descrição de uma nova espécie (Diptera, Psychodidae). **Revista Brasileira de Biologia** **22**: 55–60.
- Martins, A.V., Godoy Junior, T.L. & Silva, J.E. 1962b. Uma nova espécie de flebotomo dos Estados do Rio de Janeiro e Espírito Santo – *Lutzomyia gasparviannai* n. sp. (Diptera, Psychodidae). **Revista do Instituto de Medicina Tropical de São Paulo** **4**: 85–90.
- Martins, A.V. & Silva, J.E. 1968. *Barrettomyia* n. subg., com a descrição de uma espécie nova e da fêmea de *Lutzomyia (Barrettomyia) costalimai* (Mangabeira, 1942). **Boletim do Museu de História Natural (Zoologia)** **3**: 1–15.
- Martins, A.V., Williams, P. & Falcão, A.L. 1978. **American Sand Flies (Diptera: Psychodidae, Phlebotominae)**. Rio de Janeiro, Academia Brasileira de Ciências, 195 p.
- Marzochi, M.C.A., Fagundes, A., Andrade, M.V., Souza, M.B., Madeira, M.F., Mouta-Confort, E., Schubach, A.O. & Marzochi, K.B.F. 2009. Visceral leishmaniasis in Rio de Janeiro, Brazil: eco-epidemiological aspects and control. **Revista da Sociedade Brasileira de Medicina Tropical** **42**: 570–580.
- Marzochi, M. C. A., Sabroza, P. C., Toledo, L. M., Marzochi, K. B. F., Tramontano, N.C. & Rangel Filho, F.B. 1985. Leishmaniose visceral na cidade do Rio de Janeiro – Brasil. **Cadernos de Saúde Pública** **1**: 5–17.
- Meneses, C.R.V., Azevedo, A.C.R., Costa, S.M., Costa, W.A. & Rangel, E.F. 2002. Ecology of American cutaneous leishmaniasis in the state of Rio de Janeiro, Brazil. **Journal of Vector Ecology** **27**: 207–214.
- Meneses, C.R.V., Cupolillo, E., Monteiro, F. & Rangel, E.F. 2005. Microgeographical variation among male populations of the sandfly, *Lutzomyia (Nyssomyia) intermedia*, from an endemic area of American cutaneous leishmaniasis in the state of Rio de Janeiro, Brazil. **Medical and Veterinary Entomology** **19**: 38–47.
- Missawa, N.A. & Maciel, G.B.M.L. 2007. List of species in the genus *Lutzomyia*, França, 1924 (Psychodidae, Phlebotominae) from the State of Mato Grosso. **Revista da Sociedade Brasileira de Medicina Tropical** **40**: 11–14.
- Moutinho, F.F.B., Souza, M.B. & Carvalho, R.W. 2010. Flebotomíneos de las zonas endémicas de leishmaniasis cutánea americana en Paraty, Rio de Janeiro, Brasil. **Revista Colombiana de Entomología** **36**: 82–85.
- Nery-Guimarães, F. 1955. Estudo de um foco de leishmaniose mucocutânea na Baixada Fluminense (Estado do Rio de Janeiro). **Memórias do Instituto Oswaldo Cruz** **53**: 1–11.
- Nery-Guimarães, F. & F.M. Bustamante. 1954. A aplicação domiciliar de DDT como base da profilaxia das leishmanioses. Estudo de um foco de leishmaniose mucocutânea cinco anos depois da aspersão periódica com aquê inseticida. **Revista Brasileira de Malariologia e Doenças Tropicais** **6**: 127–130.
- Novo, S.P.C., Souza, M.B., Villanova, C.B., Meródio, J.C. & Meira, A.M. 2013. Survey of sandfly vectors of leishmaniasis in Marambaia Island, municipality of Mangaratiba, State of Rio de Janeiro, Brazil. **Revista da Sociedade Brasileira de Medicina Tropical** **46**: 231–233.
- Oliveira, S.M., Afonso, R.C.H., Dias, C.M.G. & Brazil, R.P. 1994. Description of a new species of sand fly *Lutzomyia (Pressatia) mamedei* n.sp. (Diptera: Psychodidae) from Rio de Janeiro, Brazil. **Memórias do Instituto Oswaldo Cruz** **89**: 319–320.
- Oliveira, S.M.P., Afonso, R.C.H., Dias, C.M.G. & Brazil, R.P. 1995. Estudo da Fauna de Flebotomíneos (Diptera: Psychodidae) em Santa Cruz, Município do Rio de Janeiro, Brasil. **Revista Brasileira de Entomologia** **39**: 547–551.
- Oliveira-Neto, M.P., Mattos, M.S., Perez, M.A., Da-Cruz, A.M., Fernandes, O., Moreira, J., Gonçalves-Costa, S.C., Brahin, L.R., Menezes, C.R. & Pirmez, C. 2000. American tegumentary leishmaniasis (ATL) in Rio de Janeiro State, Brazil: main clinical and epidemiologic characteristics. **International Journal of Dermatology** **39**: 506–514.
- Oliveira-Neto, M.P., Pirmez, C., Rangel, E., Schubach, A. & Grimaldi Jr., G. 1988. An outbreak of american cutaneous leishmaniasis (*Leishmania braziliensis braziliensis*) in a periurban area of Rio de Janeiro City, Brazil: clinical and epidemiological studies. **Memórias do Instituto Oswaldo Cruz** **83**: 427–435.
- Passos, V.M.A., Falcão, A.L., Marzochi, M.C.A., Gontijo, C.M.F., Dias, E.S., Barbosa-Santos, E.G.O., Guerra, H.L. & Katz, N. 1993. Epidemiological aspects of American cutaneous leishmaniasis in a periurban area of the metropolitan region of Belo Horizonte, Minas Gerais, Brazil. **Memórias do Instituto Oswaldo Cruz** **88**: 103–110.
- Pita-Pereira, D., Alves, C.R., Souza, M.B., Brazil, R.P., Bertho, A.L., Figueiredo, A.B. & Britto, C.C. 2005. Identification of naturally infected *Lutzomyia intermedia* and *Lutzomyia migonei* with *Leishmania (Viannia) braziliensis* in Rio de Janeiro (Brazil) revealed by a PCR multiplex non-isotopic hybridisation assay. **Transactions of the Royal Society of Tropical Medicine and Hygiene** **99**: 905–913.
- Pita-Pereira, D., Souza, G.D., Pereira, T.A., Zwetsch, A., Britto, C. & Rangel, E.F. 2011. *Lutzomyia (Pintomyia) fischeri* (Diptera: Psychodidae: Phlebotominae), a probable vector of American cutaneous leishmaniasis: Detection of natural infection by *Leishmania (Viannia)* DNA in specimens from the municipality of Porto Alegre (RS), Brazil, using multiplex PCR assay. **Acta Tropica** **120**: 273–275.
- Pugedo, H., Barata, R.A., França-Silva, J.C., Silva, J.C. & Dias, E.S. 2005. HP: um modelo aprimorado de armadilha luminosa de sucção para a captura de pequenos insetos. **Revista da Sociedade Brasileira de Medicina Tropical** **38**: 70–72.
- Rangel, E.F., Azevedo, A.C.R., Andrade, C.A., Souza, N.A. & Wermelinger, E.D. 1990. Studies on sandfly fauna (Diptera: Psychodidae) in a foci of cutaneous leishmaniasis in Mesquita, Rio de Janeiro State, Brazil. **Memórias do Instituto Oswaldo Cruz** **85**: 39–45.
- Rangel, E.F., Barbosa, A.F., Andrade, C.A., Souza, N.A. & Wermelinger, E.D. 1992. Development of *Leishmania (Viannia) braziliensis* Viannia, 1991 in *Lutzomyia intermedia* (Lutz & Neiva, 1912) (Diptera: Psychodidae) under experimental conditions. **Memórias do Instituto Oswaldo Cruz** **87**: 235–238.
- Rangel, E.F. & Lainson, R. 2009. Proven and putative vectors of American cutaneous leishmaniasis in Brazil: aspects of their biology and vectorial competence. **Memórias do Instituto Oswaldo Cruz** **104**: 937–954.
- Rangel, E.F., Souza, N.A., Wermelinger, E.D., Azevedo, A.C.R., Barbosa, A.F. & Andrade, C.A. 1986. Flebotomos de Vargem Grande, foco de leishmaniose tegumentar no estado do Rio de Janeiro. **Memórias do Instituto Oswaldo Cruz** **81**: 347–349.
- Rangel, E.F., Souza, N.A., Wermelinger, E.D. & Barbosa, A.F. 1984. Infecção natural de *Lutzomyia intermedia* Lutz & Neiva, 1912, em área endêmica de leishmaniose tegumentar no estado do Rio de Janeiro. **Memórias do Instituto Oswaldo Cruz** **79**: 395–396.

- Rangel, E.F. & Vilela, M.L. 2008. *Lutzomyia longipalpis* (Diptera, Psychodidae, Phlebotominae) and urbanization of visceral leishmaniasis in Brazil. **Cadernos de Saúde Pública** **24**: 2948–2952.
- Rendeiro, V. 2007. Flebotomíneos (Diptera: Phlebotominae) em área de foco ativo de leishmaniose tegumentar, Angra dos Reis, orla marítima do estado do Rio de Janeiro, Brasil. Monograph, Fundação Oswaldo Cruz, Instituto Oswaldo Cruz, 47 p.
- Rezende, H.R., Sessa, P.A., Ferreira, A.L., Santos, C.B., Leite, G.R. & Falqueto, A. 2009. Efeitos da implantação da Usina Hidrelétrica de Rosal, Rio Itabapoana, Estados do Espírito Santo e Rio de Janeiro, sobre anofelinos, planorbídeos e flebotomíneos. **Revista da Sociedade Brasileira de Medicina Tropical** **42**: 160–164.
- Rocha, L.S., Falqueto, A., Santos, C.B., Ferreira, A.L., Graça, G.C., Grimaldi Jr., G. & Cupolillo, E. 2010. Survey of natural infection by *Leishmania* in sand fly species collected in southeastern Brazil. **Transactions of the Royal Society of Tropical Medicine and Hygiene** **104**: 461–466.
- Rodrigues, A.A.F., Barbosa, V.A., Andrade Filho, J.D. & Brazil, R.P. 2013. The sandfly fauna (Diptera: Psychodidae: Phlebotominae) of the Parque Estadual da Serra da Tiririca, Rio de Janeiro, Brazil. **Memórias do Instituto Oswaldo Cruz** **108**: 943–946.
- Salazar, H.C., Pinto, F.P., Gouveia, L.R., Bacha, P.C. & Salgueiro, P.F. 1979. Leishmaniose visceral (Relato de um caso autóctone na cidade do Rio de Janeiro). **Revista Médica** **8**: 19–20.
- Santana, A.L.F. 2003. Estudos sobre a fauna flebotomínica (Diptera: Psychodidae: Phlebotominae) e avaliação das condições de risco de transmissão de leishmaniose tegumentar americana no bairro de Vila Guimarães, município de Nova Iguaçu, Rio de Janeiro. Senior thesis, Fundação Técnico-Educacional Souza Marques, 40 p.
- Santos, G.P.L. 1998. Estudo da população canina e da fauna flebotomínica em áreas de leishmaniose tegumentar no município de Paracambi, estado do Rio de Janeiro, uma abordagem epidemiológica. M.Sc. Dissertation, Universidade Federal Rural do Rio de Janeiro, Instituto de Biologia, 199 p.
- Shaw, J.J. & Lainson, R. 1968. Leishmaniasis in Brazil: II. Observations on enzootic rodent leishmaniasis in the lower Amazon region – the feeding habits of the vector, *Lutzomyia flaviscutellata*, in reference to man, rodents and other animals. **Transactions of the Royal Society of Tropical Medicine and Hygiene** **62**: 396–405.
- Shaw, J.J., Lainson, R. & Ward, R.D. 1972. Leishmaniasis in Brazil. VII. Further observations on the feeding habitats of *Lutzomyia flaviscutellata* (Mangabeira) with particular reference to its biting habits at different heights. **Transactions of the Royal Society of Tropical Medicine and Hygiene** **66**: 718–723.
- Shimabukuro, P.H.F., Silva, T.R.R., Fonseca, F.O.R., Baton, L.A. & Galati, E.A.B. 2010. Geographical distribution of American cutaneous leishmaniasis and its phlebotomine vectors (Diptera: Psychodidae) in the state of São Paulo, Brazil. **Parasites & Vectors** **3**: 121.
- Silva, O.S. & Grunewald, J. 1999. Contribution to the sand fly fauna (Diptera: Phlebotominae) of Rio Grande do Sul, Brazil and *Leishmania (Viania)* infections. **Memórias do Instituto Oswaldo Cruz** **94**: 579–582.
- Souza, M.A., Sabroza, P.C., Marzochi, M.C.A., Coutinho, S.G. & Souza, W.J.S. 1981. Leishmaniose visceral no Rio de Janeiro. 1 – Flebotomíneos da área de procedência de caso humano autóctone. **Memórias do Instituto Oswaldo Cruz** **76**: 161–168.
- Souza, M.B., Cardoso, P.G., Sanavria, A., Marzochi, M.C.A., Carvalho, R.W., Ribeiro, P.C., Ponte, C.S., Meira, A.M. & Meródio, J.C. 2003a. Fauna flebotomínica do município de Bom Jardim, região serrana do Estado do Rio de Janeiro, Brasil. **Revista Brasileira de Parasitologia Veterinária** **12**: 150–153.
- Souza, M.B., Carvalho, R.W., Machado, R.N.M. & Wermelinger, E.D. 2009. Flebotomíneos de áreas com notificações de casos autóctones de leishmaniose visceral canina e leishmaniose tegumentar americana em Angra dos Reis, Rio de Janeiro, Brasil. **Revista Brasileira de Entomologia** **53**: 147–150.
- Souza, M.B., Marzochi, M.C.A., Carvalho, R.W., Ribeiro, P.C., Pontes, C.S., Caetano, J.M. & Meira, A.M. 2003b. Ausência da *Lutzomyia longipalpis* em algumas áreas de ocorrência de leishmaniose visceral no Município do Rio de Janeiro. **Cadernos de Saúde Pública** **19**: 1881–1885.
- Souza, M.B., Marzochi, M.C.A., Luz, J.R.P., Carvalho, R.W., Santos, G.P.L., Ponte, C.S. & Meira, A.M. 2000. Estudo da fauna flebotomínica de zona periurbana do Município do Rio de Janeiro, Brasil, com leishmanioses tegumentar e visceral. **Entomologia y Vectores** **7**: 355–365.
- Souza, N.A., Andrade-Coelho, C.A., Peixoto, A.A. & Rangel, E.F. 2005a. Nocturnal activity rhythms of *Lutzomyia intermedia* and *Lutzomyia whitmani* (Diptera: Psychodidae) in a transmission area of American cutaneous leishmaniasis in Rio de Janeiro State, Brazil. **Journal of Medical Entomology** **42**: 986–992.
- Souza, N.A., Andrade-Coelho, C.A., Silva, V.C., Peixoto, A.A. & Rangel, E.F. 2005b. Moonlight and blood-feeding behaviour of *Lutzomyia intermedia* and *Lutzomyia whitmani* (Diptera: Psychodidae: Phlebotominae), vectors of American cutaneous leishmaniasis in Brazil. **Memórias do Instituto Oswaldo Cruz** **100**: 39–42.
- Souza, N.A., Andrade-Coelho, C.A., Vilela, M.L., Peixoto, A.A. & Rangel, E.F. 2002. Seasonality of *Lutzomyia intermedia* and *Lutzomyia whitmani* (Diptera: Psychodidae: Phlebotominae), occurring sympatrically in area of cutaneous leishmaniasis in the State of Rio de Janeiro, Brazil. **Memórias do Instituto Oswaldo Cruz** **97**: 759–765.
- Souza, N.A., Andrade-Coelho, C.A., Vilela, M.L. & Rangel, E.F. 2001. The Phlebotominae sand fly (Diptera: Psychodidae) fauna of two atlantic rain forest reserves in the State of Rio de Janeiro, Brazil. **Memórias do Instituto Oswaldo Cruz** **96**: 319–324.
- Sudia, W.D. & Chamberlain, R.W. 1962. Battery operated light trap, an improved model. **Mosquito News** **22**: 126–129.
- Tolezano, J.E., Araujo, M.F.L., Balanco, J.M.F., Valentim, A.M. & Barca, M.L. 1988. *Leishmania* sp. isolated from blood heart of *Akodon* sp. (Rodentia, Cricetidae) caught in Iguape City, São Paulo State, Brazil. **Memórias do Instituto Oswaldo Cruz** **83 (Supl. 1)**: 38.
- Tolezano, J.E., Uliana, S.R.B., Taniguchi, H.H., Araújo, M.F.L., Barbosa, J.A.R., Barbosa, J.E.R., Floeter-Winter, L.M. & Shaw, J.J. 2007. The first records of *Leishmania (Leishmania) amazonensis* in dogs (*Canis familiaris*) diagnosed clinically as having canine visceral leishmaniasis from Araçatuba County, São Paulo State, Brazil. **Veterinary Parasitology** **149**: 280–284.
- Ward, R.D., Lainson, R. & Shaw, J.J. 1977. Experimental transmissions of *Leishmania mexicana amazonensis* Lainson and Shaw, between hamsters by the bite of *Lutzomyia flaviscutellata* (Mangabeira). **Transactions of the Royal Society of Tropical Medicine and Hygiene** **71**: 265–266.
- Werneck, G.L. 2008. Forum: geographic spread and urbanization of visceral leishmaniasis in Brazil. Introduction. **Cadernos de Saúde Pública** **24**: 2937–2940.
- Ximenes, M.F.F.M., Castellón, E.G., Souza, M.F., Freitas, R.A., Pearson, R.D., Wilson, M. E. & Jerônimo, S.M. B. 2000. Distribution of phlebotomine sand flies (Diptera: Psychodidae) in the State of Rio Grande do Norte, Brazil. **Journal of Medical Entomology** **37**: 162–169.
- Young, D.G. & Duncan, M.A. 1994. Guide to the identification and geographic distribution of *Lutzomyia* sandflies in Mexico, the West Indies, Central and South America (Diptera: Psychodidae). **Memoirs of the American Entomological Institute** **54**: 1–881.