

Differential Survival Benefit of Universal HAART Access in Brazil: A Nation-Wide Comparison of Injecting Drug Users Versus Men Who Have Sex With Men

Monica Malta, PhD,* Francisco I. Bastos, PhD,† Cosme M. F. P. da Silva, PhD,‡
Gerson Fernando Mendes Pereira, MD,§ Francisca F. A. Lucena, BS,§
Maria G. P. Fonseca, PhD,|| and Steffanie A. Strathdee, PhD¶

Objective: Brazil accounts for ~70% of injection drug users (IDUs) receiving highly active antiretroviral therapy (HAART) in low-income/middle-income countries. We evaluated the impact of HAART availability/access on AIDS-related mortality among IDUs versus men who have sex with men (MSM).

Design: Nation-wide analysis on Brazilian IDU and MSM diagnosed with AIDS in 2000–2006.

Methods: Four national information systems were linked, and Cox regression was used to assess impact of HAART availability/access on differential AIDS-related mortality.

Results: Among 28,426 patients, 6777 died during 87,792 person-years of follow-up. Compared with MSM, IDU were significantly less likely to be receiving HAART, to have ever had determinations for CD4 or viral load. After controlling for confounders, IDU had a significantly higher risk of death (adjusted hazard ratio: 1.94; 95% confidence interval: 1.84 to 2.05). Among the subset that had at least 1 CD4 and viral load determination, higher risk of death among IDU persisted (hazard ratio: 1.82; 95% confidence interval: 1.58 to 2.11). Nonwhite ethnicity significantly increased this risk, whereas prompt HAART uptake after AIDS diagnosis reduced the risk of death. After

controlling for spatially correlated survival data, AIDS-related mortality remained higher in IDU than in MSM.

Conclusions: Despite free/universal HAART access, differential AIDS-related mortality exists in Brazil. Efforts are needed to identify and eliminate these health disparities.

Key Words: AIDS, drug user, HAART, HIV, survival

(*J Acquir Immune Defic Syndr* 2009;52:629–635)

INTRODUCTION

Highly active antiretroviral therapy (HAART) significantly improves the prognosis of HIV-infected persons by reducing HIV viral load, increasing CD4⁺ cell levels, and delaying progression to AIDS, ultimately reducing mortality rates.¹ Because reduced HIV viral load also seems to be important for reducing HIV transmission,² increasing availability and adherence to HAART has also gained attention as a potential HIV prevention strategy.³

However, inequalities in health outcomes among people living with HIV/AIDS (PLWHA) continue to be reported in high-, middle-, and low-income countries such diverse as the United States, Brazil, and Uganda.^{4–9} A high proportion of AIDS deaths in the developed world are due to poor access to HAART among disadvantaged/marginalized populations.^{10,11}

Disparities in HIV-related mortality might be due to differential access to HAART and retention in treatment among specific subpopulations, such as drug users.^{12,13} Compared with other populations living with HIV/AIDS, injection drug users (IDUs) usually have lower utilization and adherence to HAART and are more likely to experience virologic failure, contributing to a rapid disease progression.^{14–16} Studies in the United States indicate that IDU tend to initiate HAART at a more advanced stage of HIV infection compared with other populations.^{15,17–19} However, in the United States, health insurance is a major barrier to care and may explain many of these associations. The active use of illicit drugs, and limited mental health care and substance abuse management (especially methadone substitution therapy), and constant incarceration/detention of drug users may also explain delays or interruptions in HAART use among IDUs.^{20–22}

Received for publication December 16, 2008; accepted June 8, 2009.

From the *Social Science Department, Sergio Arouca School of Public Health (DCS/ENSP), Oswaldo Cruz Foundation, Rio de Janeiro, Brazil; †Health Information Department, Center for Scientific and Technological Information (DIS/CICT), Oswaldo Cruz Foundation, Rio de Janeiro, Brazil; ‡Department of Epidemiology and Quantitative Methods, Sergio Arouca School of Public Health (DEMQS/ENSP), Oswaldo Cruz Foundation, Rio de Janeiro, Brazil; §Surveillance Unit, Brazilian National STD/AIDS Program, Brasilia, Brazil; ||Evandro Chagas Clinical Research Institute (IPEC), Oswaldo Cruz Foundation, Rio de Janeiro, Brazil; and ¶Division of International Health and Cross Cultural Medicine, Department of Family and Preventive Medicine at University of California, San Diego (UCSD) School of Medicine, San Diego, CA.

Dr. Strathdee acknowledges support from the Fogarty International Center, grant R25-TW007500. Dr. Malta acknowledges support from the CICAAD/NIDA Competitive Research Award Fund and the University of California Center for AIDS Research (NIAID 5 P30 AI 036214).

Part of this data were presented at the XVII International AIDS Conference, August 3–8, 2008, Mexico City, Mexico.

Correspondence to: Monica Malta, PhD, Oswaldo Cruz Foundation, Rua Leopoldo Bulhoes, 1480—room 905, Manguinhos, Rio de Janeiro, RJ 21041-210, Brazil (e-mail: momalta@cict.fiocruz.br).

Copyright © 2009 by Lippincott Williams & Wilkins

Brazil was the first middle-income country to provide full access to HAART, laboratory monitoring, and clinical care at no cost at the point of health care delivery to any eligible patient, since 1996.²³ As of June 2008, approximately 190,000 patients were receiving HAART in Brazil, making it the most comprehensive HIV treatment initiative implemented thus far in a middle-income country, worldwide.^{24,25} Globally, Brazil provides treatment and care to approximately 70% of IDUs receiving HAART, which is the largest number of HIV+ IDU outside high-income countries.¹³

Despite being one of the first countries to implement free and universal access to HAART, no nation-wide evaluation has been conducted using longitudinal information of all PLWHA receiving HIV treatment and care. A recent small study analyzed data from 170 patients (68 IDUs) from Brazil, aiming to compare the utilization of HIV-related health care by IDU and other populations.²⁶ According to this study, IDUs were less likely to receive antiretroviral (ARV) prescriptions and requests for CD4 lymphocyte and viral load counts compared with non-IDU. Health care utilization increased over time in the non-IDU group, parallel to the implementation of the Brazilian health policy of universal access to HIV treatment, but this favorable trend was not observed among IDUs.

Herein, we report differences in survival from AIDS diagnosis by transmission risk category, within the unique Brazilian setting. This study evaluated all patients receiving treatment in the country between 2000 and 2006, therefore avoiding selection bias present in other studies that included partial subsets of the country's population living with HIV/AIDS.

METHODS

This study utilized 4 databanks comprising different longitudinal information of all PLWHA under treatment and care through the Brazilian public health system. These databanks contain the core information of Brazil's surveillance system and are specified as follows: sociodemographic information on AIDS cases (Reported AIDS Cases System [SINAN]); data from exams conducted in public laboratories, particularly TCD4⁺/TCD8 lymphocyte counting and HIV viral load (Laboratory Exams Control System [SISCEL]), information about monthly ARV refills and therapeutic regimen changes over time (AIDS Medications Control System [SICLOM]), and the date and cause/s of death (National Mortality System [SIM]). Data from the entire population of PLWHA with diagnosis between 2000 and 2006, whose transmission category was injecting drug use or homo/bisexual contact, were extracted from those databanks and merged.

Databank Linkage

In Brazil, although private health insurance covers costs with laboratorial exams, accredited physicians, and hospitals, it does not cover costs with medications. Therefore, the number of PLWHA not receiving ARVs through the public health system is negligible. Affluent PLWHA tend to be notified on SICLOM and SINAN databanks, although are rarely found on SISCEL (ie, they use their private insurance to reimburse them for exams performed at private laboratories).

On the other hand, PLWHA from low socioeconomic strata have less access to successive laboratory follow-up and ARV refills. Therefore, those patients tend to be more efficiently and rapidly included on SINAN-AIDS and SIM databanks than on SISCEL and SICLOM.

Because differential information is found in each databank, comprehensive analyses must use data from all databanks. As a first step, we standardized the different databanks to have exactly the same variable names, lengths, and format throughout all databanks. An identification key was created for each patient, therefore permitting his unique identification in the different databanks.

The National AIDS Program is in charge of the management of 3 of the above-mentioned databanks (SINAN-AIDS, SISCEL, and SICLOM). The merging of such databanks originated a new databank, comprising sociodemographic information and information on exposure category (SINAN-AIDS), successive laboratorial exams (SISCEL), and monthly refill of ARV medication and ARV therapeutic regimens switches (SICLOM).

In a subsequent step, we performed the linkage of this merged databank with information from the National Mortality System (SIM). SIM identifies each death through the patient full name, his mother's name, and cause(s) of death but lacks alphanumeric identifiers. Therefore, we linked the merged AIDS databank with SIM using Recklink 3.0 software,²⁷ which is based on probabilistic record linkage.^{28,29}

The above linkage yielded a comprehensive databank with information on PLWHA under treatment through the Brazilian public health system, aged 18 years or older and with a confirmed AIDS diagnosis. For this analysis, participants were included if they were diagnosed (medical assessment of AIDS) between January 1, 2000, and August 31, 2006, and if their most probable route of HIV infection was IDU or male homosexual contact. Patients whose most probable route of HIV infection was heterosexual contact were not included because we aimed to analyze differences in survival from AIDS diagnosis between a population known to have higher rates of initiation and adherence to HAART men who have sex with men (MSM) with a population known to have the lowest rates of initiating HAART, worldwide: IDUs. Females were excluded on the analysis because they corresponded to less than 3% of the IDU AIDS cases.

The final databank comprised the following covariates: date of birth, most probable route of HIV infection, ethnicity, date of AIDS diagnosis, dates of initiation of HAART, CD4 counts and viral load values in successive visits (with the corresponding dates), and cause(s) and date of death.

Statistical Analyses

The primary endpoint was mortality from AIDS-related causes during the follow-up period. Survival was calculated as the time elapsed from date of AIDS diagnosis until the date of AIDS-related death (or censoring). All other deaths were censored on the date of death, and individuals who stayed alive were censored at the end of data collection period (August 31, 2006). Because analyses were based on secondary data, we did not have access to information on clinical visits; therefore, we were not able to calculate losses to follow-up.

Kaplan–Meier curves were fitted to compare probabilities of survival according to selected covariates using the log-rank test. Cox proportional hazard regression modeling was used to examine covariates associated with survival among the following: age at AIDS diagnosis, HIV exposure category (IDU vs. MSM), first CD4 lymphocyte count, HAART uptake, first HIV RNA viral load exam, and ethnicity. The likelihood ratio test was used to select variables to be entered in the Cox models, adjusting for potential confounders and testing for effect modification. The assumption of proportional hazards was evaluated through the examination of Schoenfeld residuals.³⁰

Hazard rates are strongly influenced by selection effects operating in the population (eg, higher availability of referral centers in a given locality), and individuals surviving up to a certain time will on average be less frail than the original population, therefore, unobserved individual heterogeneity (or frailty) was also taken into account.^{31–34}

With 8.5 million square kilometers and 185 million inhabitants, Brazil is the largest and most populous country in Latin America and faces deep health and socioeconomic differences within each region. In an attempt to account for the heterogeneity between and within different Brazilian regions and localities, analyses were repeated with the introduction of a random effect term to assess the potential association between survival times within a cluster—state or municipality of residency—using gamma-distributed frailty.³⁵

Analyses were conducted with the entire population, and with a subgroup of patients who received at least 1 CD4 count determination and 1 HIV-1 RNA viral load determination, to evaluate the existence of differential survival patterns among patients who sought earlier diagnosis and treatment.

Analyses were performed in *R*.³⁶ To estimate confidence intervals for Cox proportional hazard models, robust methods were used. Maximum penalized likelihood estimation was used to estimate frailty models.

RESULTS

Characteristics of the Patients

Of the 28,426 patients included in the study, 43% were IDU, and the overall mean age at AIDS diagnosis was 34.8 years (SD: 8.5). Ethnicity and age were similar comparing IDU and MSM. Although all patients had a confirmed AIDS diagnosis, only 28.3% were actually receiving HAART in the beginning of the study period (Table 1).

The overall median survival after AIDS diagnosis was 2.45 years (interquartile range: 2.09–2.86). During the follow-up period, 6777 (23.8%) patients were known to have died from AIDS-related deaths. The proportion of deaths was 2.4 times higher among IDUs than among MSM (33.1% vs. 16.8%; *P* < 0.0001) (Table 1). Patients who accessed accredited health units had better survival rates compared with those who did not receive ARVs. Compared with MSM,

TABLE 1. Sociodemographic and Clinical Characteristics of Patients Included on the Study, According to Transmission Category (n = 28,426)

	Total	Transmission Category	
		Male Homosexual Contact	Injecting Drug Use
Subjects (n, %)	28,426	16,195 (57.0)	12,231 (43.0)
Age at diagnosis, mean ± SD (range)	34.8 ± 8.5 (18–89)	35.3 ± 9.1 (18–89)	34.2 ± 7.4 (18–81)
Ethnicity			
White	10,433 (36.7)	5620 (34.7)	4813 (39.4)
Mulatto (mixed white and black)	3915 (13.8)	2625 (16.2)	1290 (10.5)
Black	1657 (5.8)	838 (5.2)	819 (6.7)
Others (Asian, indigenous)	118 (0.4)	75 (0.5)	43 (0.4)
Unspecified	12,303 (43.3)	7037 (43.5)	5266 (43.1)
HAART uptake (n, %)			
Never received HAART	20,395 (71.7)	11,138 (68.8)	9257 (75.7)
Received (or is still under) HAART	8031 (28.3)	5057 (31.2)	2974 (24.3)
Deaths [†]	6777 (23.8)	2727 (16.8)	4050 (33.1)
Have ever done at least one CD4 exam			
No	13,822 (48.6)	6984 (43.1)	6838 (55.9)
Yes	14,604 (51.4)	9,211 (56.9)	5,393 (44.1)
CD4 lymphocytes (first exam available), mean ± SD (range)‡	297.4 ± 213.4 (1–1778)	309.2 ± 217.2 (1–1758)	277.3 ± 205.2 (1–1778)
Have ever done at least 1 HIV-1 RNA viral load exam			
No	16,424 (57.8)	8775 (54.2)	7649 (62.5)
Yes	12,002 (42.2)	7420 (45.8)	4582 (37.5)
HIV RNA in plasma, log ₁₀ copies/mL (first exam available), mean ± SD (range)§	4.01 ± 1.17 (1.70–6.85)	4.05 ± 1.16 (1.70–6.85)	3.94 ± 1.18 (1.70–6.80)

[†]All causes of death.

[‡]Among those who have done at least one CD4 exam.

[§]Among those who have done at least 1 Viral load exam.

IDUs were significantly less likely to be receiving HAART at recruitment (24.3% vs. 31.2%; $P < 0.001$), less likely to have ever received at least 1 CD4 count (44.1% vs. 56.9%; $P < 0.001$), and were less likely to have ever had at least 1 HIV-1 RNA viral load determination (62.5% vs. 54.2%; $P < 0.001$).

Among those who had conducted at least 1 CD4 and HIV-1 RNA viral load exam ($n = 12,002$), IDUs had lower mean CD4 count (277.3 vs. 309.2; $P < 0.001$) but had similar HIV-1 RNA viral load counts: 3.94 vs. 4.05 \log_{10} copies per milliliter (compared with MSM) (Table 1).

In Kaplan–Meier analyses stratified by HIV-1 RNA viral load on baseline, IDUs had significantly lower survival since AIDS diagnosis, when compared with MSM ($P < 0.001$ for each comparison). Survival because AIDS diagnosis was lower among those who had never had an HIV-1 RNA viral load determination, followed by those with first HIV-1 RNA test $>5.00 \log_{10}$ copies per milliliter, those with results between 4.00 and 5.00 \log_{10} copies per milliliter, and patients with HIV-1 RNA below 4.00 \log_{10} copies per milliliter, and survival among IDUs was lower than among MSM for all viral loads strata (Fig. 1). Patients who did not have at least 1 CD4 determination during the study period had the worst survival after AIDS diagnosis, followed by those with CD4 counts bellow 200 cells per cubic millimeter, and those with CD4 counts higher than 200 cells per cubic millimeter.

Predictors of Survival

In univariate analysis, exposure category was a strong predictor of survival: risk of death for IDU was roughly 2 times higher than that of MSM. Predictors of longer survival included HAART uptake and CD4 counts >350 cells per cubic millimeter at diagnosis. Patients with an HIV RNA viral load $>5 \log_{10}$ copies per milliliter at diagnosis had a higher risk of death, and nonwhite patients (Table 2).

In multivariate analysis, the increased risk of death observed in IDU compared with MSM persisted. As expected,

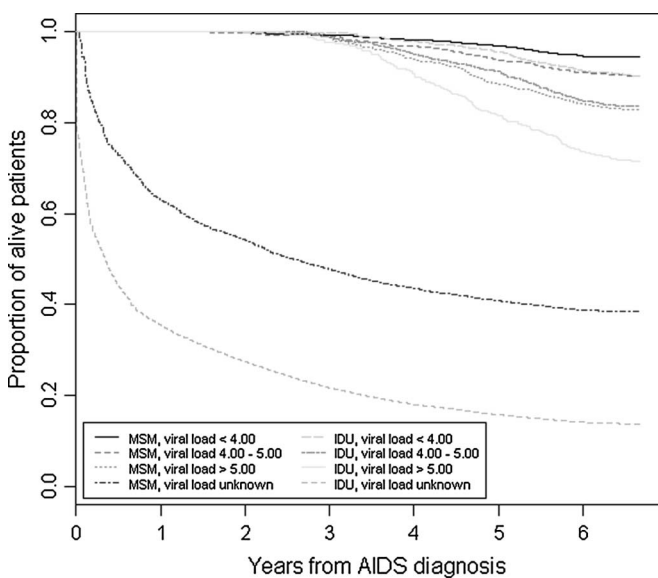


FIGURE 1. Time from AIDS to death by transmission category stratified by HIV 1 RNA (\log_{10} copies per milliliter).

TABLE 2. Hazard Ratios of Mortality According to Baseline Variables Among IDU and MSM Diagnosed With AIDS, Brazil, 2000–2006

Predictor	Unadjusted HR (95%CI)	Adjusted HR (95%CI)*
Exposure category		
MSM	1.00	1.00
IDU	1.96 (1.86 to 2.06)†	1.77 (1.68 to 1.86)†
Age (per year of increase)	1.02 (1.01 to 1.02)†	1.02 (1.02 to 1.03)†
Ethnicity		
White	1.00	1.00
Nonwhite	1.32 (1.23 to 1.41)‡	1.39 (1.30 to 1.49)†
Unknown	0.63 (0.59 to 0.67)†	0.64 (0.60 to 0.68)†
HAART uptake after AIDS diagnosis		
No	1.00	1.00
Yes	0.14 (0.13 to 0.16)†	0.52 (0.46 to 0.58)†
CD4 cell count at diagnosis ($\times 10^6/L$)		
<200	1.00	1.00
200–350	0.27 (0.23 to 0.31)‡	0.31 (0.26 to 0.37)†
>350	0.24 (0.20 to 0.27)†	0.30 (0.26 to 0.35)†
Unknown	3.11 (2.86 to 3.37)†	2.23 (1.99 to 2.50)†
HIV-1 RNA (\log_{10} copies/mL)		
<4.00	1.00	1.00
4.00–5.00	1.91 (1.64 to 2.22)‡	1.48 (1.27 to 1.72)‡
>5.00	3.77 (3.25 to 4.37)†	2.44 (2.10 to 2.84)†
Unknown	7.29 (6.52 to 8.16)†	1.67 (1.46 to 1.92)‡

*Cox proportional hazards model adjusted for all variables listed in the table.

† $P = 0.0000$.

‡ $P < 0.001$.

HR (95% CI), hazard ratio (95% confidence interval).

biological predictors such as higher CD4 cell counts and lower viral load remained a strong predictor of survival, and HAART uptake (Table 2). Results were similar when restricted to the subsample of patients who have conducted at least 1 CD4 determination and 1 HIV-1 RNA viral load determination (Table 3). However, caution should be exercised in generalizing these findings because the subsample accounted for only 40% of the overall sample.

Upon multivariate Cox frailty regression that accounted for a random effect due to the place of residence (Table 4), the increased risk of death observed in IDU compared with MSM remained higher than the estimates found in our multivariate model. Both CD4 cell counts and viral load remained as significant predictors of survival and HAART uptake, and non-white participants remained having a higher risk of death. As expected, older participants had a slightly higher risk of death. The same patterns were observed on multivariate Cox frailty regression, accounting for a random effect due to the municipality of residence, although with a slightly smaller variance.

The estimated frailty variance was significantly different from zero on both analyses, suggesting that the risk of death after AIDS diagnosis was heterogeneous among subjects living in different states and municipalities (Table 4). Greater frailty effects were found in larger states located in the tropical rain forest region and in states located in the northeast, Brazil’s poorest region. On the other hand, industrialized areas from

TABLE 3. Hazard Ratios of Mortality According to Baseline Variables Among IDU and MSM Diagnosed With AIDS Who have Conducted at Least 1 CD4 Count and 1 HIV-1 RNA Viral Load Determination, Brazil, 2000–2006 (n = 11,340)

Predictor	Unadjusted HR (95%CI)	Adjusted HR (95%CI)*
Exposure category		
MSM	1.00	1.00
IDU	1.87 (1.62 to 2.16)†	1.82 (1.58 to 2.11)‡
Age (per year of increase)	1.02 (1.01 to 1.02)‡	1.02 (1.01 to 1.02)‡
Ethnicity		
White	1.00	1.00
Nonwhite	1.39 (1.16 to 1.65)‡	1.32 (1.10 to 1.57)§
Unknown	0.80 (0.67 to 0.95)§	0.99 (0.83 to 1.17)
HAART uptake after AIDS diagnosis		
No	1.00	1.00
Yes	0.42 (0.36 to 0.48)†	0.46 (0.39 to 0.54)†
CD4 cell count at diagnosis (×10 ⁶ /L)		
<200	1.00	1.00
200–350	0.32 (0.26 to 0.38)†	0.36 (0.30 to 0.44)†
>350	0.32 (0.26 to 0.38)†	0.41 (0.34 to 0.49)†
Unknown	NA	NA
HIV-1 RNA (log ₁₀ copies/mL)		
<4.00	1.00	1.00
4.00–5.00	1.61 (1.35 to 1.92)‡	1.36 (1.13 to 1.63)‡
>5.00	2.82 (2.37 to 3.35)†	2.09 (1.75 to 2.51)‡
Unknown	NA	NA

*Cox proportional hazards model adjusted for all variables listed in the table.

†P = 0.0000.

‡P < 0.001.

§P ≤ 0.01.

HR (95% CI), hazard ratio (95% confidence interval).

TABLE 4. Hazard Ratios of Mortality According to Baseline Variables Among IDU and MSM Diagnosed With AIDS, Adjusted by State or Municipality Frailty Effect, Brazil, 2000–2006

Predictor	Frailty: State of Residence HR (95%CI)	Frailty: Municipality of Residence HR (95%CI)
Exposure category		
MSM	1.00	1.00
IDU	1.94 (1.84 to 2.05)*	1.87 (1.77 to 1.98)*
Age (per year of increase)	1.02 (1.02 to 1.03)*	1.02 (1.02 to 1.03)*
Ethnicity		
White	1.00	1.00
Nonwhite	1.29 (1.20 to 1.38)*	1.34 (1.25 to 1.45)*
Unknown	0.56 (0.52 to 0.59)*	0.56 (0.52 to 0.59)*
HAART uptake after AIDS diagnosis		
No	1.00	1.00
Yes	0.50 (0.44 to 0.56)*	0.48 (0.42 to 0.53)*
CD4 cell count at diagnosis (×10 ⁶ /L)		
<200	1.00	1.00
200–350	0.31 (0.26 to 0.36)*	0.30 (0.26 to 0.35)*
>350	0.30 (0.26 to 0.36)*	0.30 (0.26 to 0.35)*
Unknown	2.39 (2.13 to 2.68)*	2.65 (2.35 to 2.99)*
HIV-1 RNA (log ₁₀ copies/mL)		
<4.00	1.00	1.00
4.00–5.00	1.44 (1.23 to 1.67)*	1.47 (1.26 to 1.72)*
>5.00	2.39 (2.05 to 2.77)†	2.46 (2.11 to 2.87)*
Unknown	1.67 (1.46 to 1.91)*	1.71 (1.49 to 1.96)*
Estimated frailty variance	0.57*	0.50*

*P = 0.0000.

†P ≤ 0.0001.

HR (95% CI), hazard ratio (95% confidence interval).

the southern and southeastern regions accounted for the smallest frailty effect.

DISCUSSION

This is the first study in Brazil to conduct survival analyses with a large and representative population of PLWHA using data from all Brazilian AIDS surveillance databanks. MSM were selected as the comparison group because several studies have demonstrated the increased survival and better access to health care among MSM, particularly when compared with IDU, a highly marginalized population.^{37–39} Previous survival analyses conducted with Brazilian AIDS National Data found a substantial increase in survival time over the years, particularly among patients diagnosed after 1996, when free and universal access was instituted in Brazil.⁴⁰ The present study extended these earlier findings by analyzing for the first time data from all patients with a confirmed AIDS diagnosis after HAART became widely available in the country, with specific analyses for different exposure categories (IDUs and MSM).

This study uncovered a significant increase in survival after AIDS diagnosis among patients belonging to both MSM and IDU exposure categories: the overall median survival was 2.45 years for those patients diagnosed in the late post-

HAART era (after 2000). In a previous study conducted with national data, the median survival times after AIDS diagnosis were 5 months for cases diagnosed in the 1980s and 18 months for those diagnosed in 1995.⁴⁰ The increased survival we observed underscores the dramatic benefit of providing universal access to HAART to both MSM and IDUs that have been reported by others^{41,42} and emphasizes the need for treatment rollout in developing countries.

However, our analysis also showed that deep inequalities remain, even in the context of free and universal access to HAART in Brazil. IDUs living with AIDS were less likely to receive HAART, had lower CD4 counts and higher HIV-1 viral loads when presenting to health care facilities, and subsequently had higher mortality rates compared with MSM. Even for patients diagnosed after 2000, when HAART and correspondent monitoring were available even in Brazil's most remote corners, IDUs still had a higher mortality rate: almost one and a half times higher than MSM, after adjusting for confounders. Even after restricting our analysis to patients who had received at least 1 CD4 count and 1 HIV-1 RNA viral load determination, IDU remained with higher mortality rates. Our findings suggest that substantial reductions in time to AIDS and death during the HAART era do not apply equally to IDUs, when compared with MSM and that unequal access to care is unlikely to fully explain the disparities in mortality rates.

The disparities we observed may be attributed to key problems already identified among this population: lower overall uptake of HAART,¹³ late presentation into care, lack of key laboratory and monitoring for a large proportion of IDU, and initiation of HAART at more advanced stages of disease.²⁰ The higher mortality rate we observed among IDUs has already been described in a smaller Brazilian study by Cardoso et al⁴³ and in high-income countries with universal access to HAART.^{37,44} Our study extends findings by Cardoso et al,⁴³ by evaluating all IDUs receiving HIV treatment and care through public health facilities in the country rather than a convenience sample of HIV-positive IDUs.

In the present study, having received HAART was also associated with a clear survival advantage after AIDS diagnosis. However, we cannot rule out selection bias due to differential indication of treatment, as those patients who are prescribed HAART might be those with a greater a priori probability of survival. Additional modeling analyses are needed to separate these entangled effects.

This study is highly representative in terms of its broad geographic scope; however, its external validity might be limited by the fact that an unmeasurable fraction of people living with AIDS may not access the network of accredited health units due to costs associated with traveling or other marginal costs (eg, losses secondary to unexpected work leaves or the need to care of young children).

Another limitation of our study is the unavailability of information on other covariates that may influence health and survival and which may vary over time, such as active drug use and engagement in drug addiction treatment. We were unable to examine other structural factors, such as access to private health insurance (around 30% of PLWHA in Brazil), quality of care, or health-related behavior (eg, HAART adherence) that may account for these disparities on an individual and/or at population level. Differences outcomes might result from biases and/or confounders not accounted for in our model.

Around 40%–50% of our sample had never had a CD4 count and/or an HIV viral load determination performed through the public health system. Although a proportion of these patients might be obtaining their exams through private laboratories, the Kaplan–Meier curves for those with unknown initial CD4 or HIV viral load were significantly lower than that for those with available results, which reinforces the notion that an important percentage of those patients with unknown information might not receive any care.

Perhaps the greatest limitation of our analysis is the lack of information on treatment course and clinical events, such as the type of initial ART regimen and changes in therapeutic regimens over time. Recent studies have found that better immunological, virological, and clinical outcomes are associated with nonnucleoside reverse transcriptase inhibitor regimens instead of unboosted protease inhibitor regimens or regimens containing boosted protease inhibitors.^{45–47} Information on treatment interruptions due to the development of medication side effects⁴⁸ or the development of a concurrent illness was also not available.

Our analysis attempted to account for the heterogeneity between and within different Brazilian regions and localities. As expected, this analysis suggests higher mortality risks for

patients living in larger semi-urban and rural areas and/or in the poorest regions of Brazil. In those regions, AIDS mortality might be influenced by structural factors related to the place of residence, beyond individual level factors (eg, less availability of specialized services, great distances from residence to AIDS services). This analysis suggests the need to include the assessment of structural variables and/or to conduct multilevel analyses in future studies. Even after these adjustments, the analyses followed the same general trend of a significantly increased risk of death among IDUs, when compared to MSM.

Among the patients who access Brazil's network of more than 600 ARV dispensing units, the use of HAART for HIV-positive drug users remains a complex public health problem. Issues of delayed AIDS diagnoses, late entry into treatment, and lower HAART uptake need to be simultaneously addressed. Because it has been established that IDUs can attain similar adherence levels to HAART compared with other populations,^{21,22} efforts are needed to improve early engagement of IDUs in comprehensive HIV/AIDS treatment and care.

ACKNOWLEDGMENTS

The authors would like to thank the Brazilian National STD/AIDS Program for authorizing our access to their nationwide datasets.

REFERENCES

1. Egger M, May M, Chene G, et al. Prognosis of HIV-1-infected patients starting highly active antiretroviral therapy: a collaborative analysis of prospective studies. *Lancet*. 2002;360:119–129.
2. Quinn TC, Wawer MJ, Sewankambo N, et al. Viral load and heterosexual transmission of human immunodeficiency virus type 1. Rakai Project Study Group. *N Engl J Med*. 2000;342:921–929.
3. Montaner JS, Hogg R, Wood E, et al. The case for expanding access to highly active antiretroviral therapy to curb the growth of the HIV epidemic. *Lancet*. 2006;368:531–536.
4. Levine RS, Briggs NC, Kilbourne BS, et al. Black-White mortality from HIV in the United States before and after introduction of highly active antiretroviral therapy in 1996. *Am J Public Health*. 2007;97:1884–1892.
5. Harper S, Lynch J. Highly active antiretroviral therapy and socioeconomic inequalities in AIDS mortality in Spain. *Eur J Public Health*. 2007;17:231.
6. Dray-Spira R, Gueguen A, Ravaud JF, et al. Socioeconomic differences in the impact of HIV infection on workforce participation in France in the era of highly active antiretroviral therapy. *Am J Public Health*. 2007;97:552–558.
7. Braga P, Cardoso MR, Segurado AC. Gender differences in survival in an HIV/AIDS cohort from Sao Paulo, Brazil. *AIDS Patient Care STDS*. 2007;21:321–328.
8. Hacker MA, Petersen ML, Enriquez M, et al. Highly active antiretroviral therapy in Brazil: the challenge of universal access in a context of social inequality. *Rev Panam Salud Publica*. 2004;16:78–83.
9. Kiguba R, Byakika-Tusiime J, Karamagi C, et al. Discontinuation and modification of highly active antiretroviral therapy in HIV-infected Ugandans: prevalence and associated factors. *J Acquir Immune Defic Syndr*. 2007;45:218–223.
10. Wood E, Hogg RS, Yip B, et al. Effect of medication adherence on survival of HIV infected adults who start highly active antiretroviral therapy when the CD4 cell count is 0.200 to 0.350 × 10⁹ cells/L. *Ann Intern Med*. 2003;139:810–816.
11. Wood E, Hogg RS, Yip B, et al. Is there a baseline CD4 cell count that precludes a survival response to modern antiretroviral therapy? *AIDS*. 2003;17:711–720.

12. Fein O. The influence of social class on health status. American and British research on health inequalities. *J Gen Intern Med.* 1995;10:577–586.
13. Aceijas C, Oppenheimer E, Stimson GV, et al. Antiretroviral treatment for injecting DU in developing and transitional countries 1 year before the end of the “Treating 3 million by 2005. Making it happen. The WHO strategy” (“3 by 5”). *Addiction.* 2006;101:1246–1253.
14. Palepu A, Tyndall M, Yip B, et al. Impaired virologic response to highly active antiretroviral therapy associated with ongoing injection drug use. *J Acquir Immune Defic Syndr.* 2003;32:522–526.
15. Celentano DD, Galai N, Sethi AK, et al. Time to initiating highly active antiretroviral therapy among HIV-infected injection DU. *AIDS.* 2001;15:1707–1715.
16. Poundstone KE, Chaisson RE, Moore RD. Differences in HIV disease progression by injection drug use and by sex in the era of highly active antiretroviral therapy. *AIDS.* 2001;15:1115–1123.
17. Wang C, Vlahov D, Galai N, et al. Mortality in HIV-seropositive versus seronegative persons in the era of highly active antiretroviral therapy: implications for when to initiate therapy. *J Infect Dis.* 2004;190:1046–1054.
18. Bassetti S, Battegay M, Furrer H, et al. Why is highly active antiretroviral therapy (HAART) not prescribed or discontinued? Swiss HIV cohort study. *J Acquir Immune Defic Syndr.* 1999;21:114–119.
19. Mocroft A, Madge S, Johnson AM, et al. A comparison of exposure groups in the EuroSIDA study: starting highly active antiretroviral therapy (HAART), response to HAART, and survival. *J Acquir Immune Defic Syndr.* 1999;22:369–378.
20. Vlahov D, Celentano DD. Access to highly active antiretroviral therapy for injection DU: adherence, resistance, and death. *Cad Saude Publica.* 2006;22:705–718.
21. Malta M, Strathdee SA, Magnanini MM, et al. Adherence to antiretroviral therapy for human immunodeficiency virus/acquired immune deficiency syndrome among drug users: a systematic review. *Addiction.* 2008;103:1242–1257.
22. Malta M, Magnanini MM, Strathdee SA, et al. Adherence to antiretroviral therapy among HIV-infected drug users: a meta-analysis. *AIDS Behav.* 2008;1–17.
23. Bastos FI, Kerrigan D, Malta M, et al. Treatment for HIV/AIDS in Brazil: strengths, challenges, and opportunities for operations research. *AIDScience.* 2001;1. Available at: <http://aidsscience.org/Articles/aidsscience012.asp>. Accessed November 12, 2008. [serial online].
24. Simao M. Drug pricing policies and challenges: lessons from Brazil [THSY0102]. Presented at: XVII International AIDS Conference; August 2–8, 2008, Mexico City, Mexico.
25. Nunn AS, Fonseca EM, Bastos FI, et al. Evolution of antiretroviral drug costs in Brazil in the context of free and universal access to AIDS treatment. *PLoS Med.* 2007;4:e305.
26. Melo AC, Caiaffa WT, Cesar CC, et al. Utilization of HIV/AIDS treatment services: comparing injecting drug users and other clients. *Cad Saude Publica.* 2006;22:803–813.
27. Camargo KR Jr, Coeli CM. Reclink: an application for database linkage implementing the probabilistic record linkage method. *Cad Saude Publica.* 2000;16:439–447.
28. Cook LJ, Olson LM, Dean JM. Probabilistic record linkage: relationships between file sizes, identifiers and match weights. *Methods Inf Med.* 2001;40:196–203.
29. Grannis SJ, Overhage JM, Hui S, et al. Analysis of a probabilistic record linkage technique without human review. *AMIA Annu Symp Proc.* 2003;2003:259–263.
30. Schoenfeld D. Partial residuals for the proportional hazards regression model. *Biometrika.* 1982;69:239–241.
31. Clayton DG. A model for association in bivariate life tables and its application in epidemiological studies of familial tendency in chronic disease incidence. *Biometrika.* 1978;65:141–151.
32. Hougaard P. *Analysis of Multivariate Survival Data.* New York, NY: Springer; 2000.
33. Aalen OO. Effects of frailty in survival analysis. *Stat Methods Med Res.* 1994;3:227–243.
34. Carvalho MS, Andreozzi VL, Codeço CT, et al. *Survival Analysis: Theory and Health Applications.* [In Portuguese]. Rio de Janeiro, Brazil: Editora Fiocruz; 2005.
35. Naskar M, Das K, Ibrahim JG. A semiparametric mixture model for analyzing clustered competing risks data. *Biometrics.* 2005;61:729–737.
36. R Core Development Team [computer software] Version 2.8.0. Vienna, Austria: R Foundation for Statistical Computing; 2004.
37. Rodríguez-Arenas MA, Jarrín I, del Amo J, et al. Delay in the initiation of HAART, poorer virological response, and higher mortality among HIV-infected injecting drug users in Spain. *AIDS Res Hum Retroviruses.* 2006;22:715–723.
38. Blades R, Li K, Kerr T, et al. Contribution of HIV to mortality among injection drug users in the era of HAART. *J Acquir Immune Defic Syndr.* 2007;46:655–656.
39. Kirk GD, Vlahov D. Improving survival among HIV-infected injection drug users: how should we define success? *Clin Infect Dis.* 2007;45:377–380.
40. Marins JR, Jamal LF, Chen SY, et al. Dramatic improvement in survival among adult Brazilian AIDS patients. *AIDS.* 2003;17:1675–1682.
41. Smit C, Geskus R, Walker S, et al. Effective therapy has altered the spectrum of cause-specific mortality following HIV seroconversion. *AIDS.* 2006;20:741–749.
42. Pérez-Hoyos S, del Amo J, Muga R, et al. Effectiveness of highly active antiretroviral therapy in Spanish cohorts of HIV seroconverters: differences by transmission category. *AIDS.* 2003;17:353–359.
43. Cardoso MN, Caiaffa WT, Mingoti SA, and Projeto AJUDE-Brasil II. AIDS incidence and mortality in injecting drug users: the AJUDE-Brasil II. Project. *Cad Saude Publica.* 2006;22:827–837.
44. Wood E, Kerr T, Hogg RS, et al. Impact of HIV testing on uptake of HIV therapy among antiretroviral naïve HIV-infected injection drug users. *Drug Alcohol Rev.* 2006;25:451–454.
45. Gupta R, Hill A, Sawyer AW, et al. Emergence of drug resistance in HIV type 1-infected patients after receipt of first-line highly active antiretroviral therapy: a systematic review of clinical trials. *Clin Infect Dis.* 2008;47:712–722.
46. Lima VD, Gill VS, Yip B, et al. Increased resilience to the development of drug resistance with modern boosted protease inhibitor-based highly active antiretroviral therapy. *J Infect Dis.* 2008;198:51–58.
47. Bangsberg DR. Less than 95% adherence to nonnucleoside reverse-transcriptase inhibitor therapy can lead to viral suppression. *Clin Infect Dis.* 2006;43:939–941.
48. Pádua CA, César CC, Bonolo PF, et al. High incidence of adverse reactions to initial antiretroviral therapy in Brazil. *Braz J Med Biol Res.* 2006;39:495–505.