

Journal of the International Association of Physicians in AIDS Care (JIAPAC)

<http://jia.sagepub.com/>

A Comparison of Sonographic Assessments and Clinical Questionnaire in the Diagnosis of HIV-Associated Lipodystrophy

Dario José Hart Pontes Signorini, Ana Maria Schmidt de Oliveira Netto, Sergio Gabbay, Michelle Carreira Miranda Monteiro, Dario Hart Signorini, Marion de Fátima Castro de Andrade, Francisco I. Bastos and Cláudia Torres Codeço
Journal of the International Association of Physicians in AIDS Care (JIAPAC) published online 26 April 2011
DOI: 10.1177/1545109711399660

The online version of this article can be found at:
<http://jia.sagepub.com/content/early/2011/04/26/1545109711399660>

A more recent version of this article was published on - Dec 12, 2011

Published by:



<http://www.sagepublications.com>

On behalf of:



International Association
of Physicians in AIDS Care

[International Association of Physicians in AIDS Care](http://www.jiapac.org)

Additional services and information for *Journal of the International Association of Physicians in AIDS Care (JIAPAC)* can be found at:

Email Alerts: <http://jia.sagepub.com/cgi/alerts>

Subscriptions: <http://jia.sagepub.com/subscriptions>

Reprints: <http://www.sagepub.com/journalsReprints.nav>

Permissions: <http://www.sagepub.com/journalsPermissions.nav>

Version of Record - Dec 12, 2011

>> [OnlineFirst Version of Record](#) - Apr 26, 2011

[What is This?](#)

Downloaded from jia.sagepub.com at CAPES on March 13, 2012

A Comparison of Sonographic Assessments and Clinical Questionnaire in the Diagnosis of HIV-Associated Lipodystrophy

Journal of the International
Association of Physicians in AIDS Care
000(00) 1-6
© The Author(s) 2011
Reprints and permission:
sagepub.com/journalsPermissions.nav
DOI: 10.1177/1545109711399660
http://jiapac.sagepub.com


Dario José Hart Pontes Signorini, MPH, MD¹,
Ana Maria Schmidt de Oliveira Netto, MD², Sergio Gabbay, MD²,
Michelle Carreira Miranda Monteiro, MD¹,
Dario Hart Signorini¹, Marion de Fátima Castro de Andrade, MD¹,
Francisco I. Bastos³, and Cláudia Torres Codeço, PhD⁴

Abstract

The study evaluated the use of sonographic measurements as an alternative to assessments based on clinical or other imaging techniques for the diagnosis of body-fat abnormalities. The study enrolled 179 HIV-infected patients, 81 (45.3%) of them diagnosed as lipodystrophy (LD)-positive based on a clinical standard questionnaire. Association between clinical LD and sonographic measurements of face, right upper limb, subcutaneous abdomen, and visceral compartments was evaluated by multiple logistic regression. The predicted probability of the logistic model was 0.64, corresponding to a maximum sensitivity of 69.1% (58%-79%), a specificity of 94.9% (88%-98%), and to positive and negative predictive values of 92% (82%-97%) and 79% (70%-86%), respectively. Kappa measure of concordance was 65% (54%-77%). Low sensitivity poses a problem for the use of sonography to detect LD in the clinical routine as a single exam, speaking in favor of the combined use of clinical and sonographic measurements over time.

Keywords

HIV-associated lipodystrophy syndrome, anti-HIV agents, ROC curve, ultrasonography, logistic models, sensitivity and specificity

Introduction

HIV-associated lipodystrophy syndrome (LD) includes changes in the body shape and metabolic disorders associated with either the progression of HIV infection itself or the very clinical management of HIV disease with different antiretroviral medicines.¹⁻³ Brazil is in a unique situation respecting HIV management and care in general, and in the diagnosis and management of LD, in particular, due to its 14-year-long experience with the large-scale use of the highly active antiretroviral therapy (HAART). HAART is provided to any Brazilian citizen at no cost at the point of delivery as mandated by the federal legislation approved in 1996. As a middle-income country, with a large public health system and over 180 000 patients under HAART, Brazil has been challenged by the increasing costs of ARV medicines.^{4,5} In this context, the assessment of relatively simple and cheap technologies to be used in the proper management of patients under HAART constitutes a top priority.

LD is characterized by lipid and glucose metabolism alterations including hypercholesterolemia, hypertriglyceridemia, insulin resistance, and diabetes mellitus, together with altered body-fat distribution. One typical fat redistribution pattern is

the loss of subcutaneous fat in the face, limbs, abdomen, and buttocks while preserving the lean tissue (lipoatrophy). Another one is the combined enlargement of visceral, dorsocervical, and breast fat depots (lipohypertrophy). A combination of lipoatrophy and lipohypertrophy features has been also described.^{6,7} LD is routinely diagnosed either by physician's physical examination or by patient's self-report of body change, and these strategies have been regarded as valid in the context of epidemiological studies.⁸⁻¹⁰ However, subjective

¹ Hospital Universitário Gaffrée e Guinle, Universidade Federal do Estado do Rio de Janeiro (UNIRIO), Clínica Médica B, Rua Mariz e Barros, Tijuca, Rio de Janeiro, Brazil

² Instituto Brasileiro de Ultra-Sonografia, Tijuca, Rio de Janeiro, Brazil

³ Instituto de Comunicação e Informação Científica e Tecnológica em Saúde (CICT), Fundação Oswaldo Cruz (Fiocruz), João Aprígio, Brazil

⁴ Programa de Computação Científica, Fundação Oswaldo Cruz, Rio de Janeiro, Brazil

Corresponding Author:

Dario José Hart Pontes Signorini, Hospital Universitário Gaffrée e Guinle, Universidade Federal do Estado do Rio de Janeiro (UNIRIO), Clínica Médica B, Rua Mariz e Barros, 775, Tijuca, Rio de Janeiro, Brazil
Email: dariohart@terra.com.br

perceptions of body change are not always consistent with the findings of imaging techniques, such as computed tomography (CT) and dual energy X-ray absorptiometry (DEXA), both regarded as the gold standard for diagnosing HIV-associated LD.¹¹⁻¹³

More recently, sonography started to be used as an alternative to the reference approaches mentioned before. The putative advantages of sonography include its availability, harmlessness, noninvasiveness, low cost, and high acceptability by patients. Such characteristics may be especially relevant in resource-poor contexts, with high caseloads, since other methods may be unacceptably expensive, require specialized well-trained staff, and a good infrastructure. Its use has been expanding in different clinical settings, in the context of the permanent need to develop and fully implement practical, cheap, and objective diagnostic procedures for LD.¹⁴⁻¹⁸

The goal of this study was to assess the level of association between sonographic measures of body fat in the facial, abdominal, arm, and visceral compartments, and the outcome of a self-evaluation of LD status in a population of HIV-infected individuals under follow-up in a large outpatient unit in Rio de Janeiro, Brazil.

Methods

All participants assessed by the study were HIV-infected patients recruited during their periodic visit to the outpatient clinic in state-owned hospital in Rio de Janeiro city, between November 2006 and October 2009. They were eligible if they were receiving antiretroviral therapy (ART) and were aged 18 years or more.

A physician examined all participants' body surface of interest and then asked them to fill out a questionnaire¹⁰ blinded to his/her evaluation where they reported putative alterations in their body shape, such as loss of subcutaneous fat in the face, limbs and buttocks, and/or gain of truncal and/or abdominal fat.

The diagnosis of LD-HIV relied on the presence of at least 1 readily noticeable sign tandem with another mild sign of the altered body fat compartment as mentioned before, the agreement between physician's and participants' self-report evaluations concerning the body fat compartments examined, and in the absence of any signs of AIDS defining illnesses in the 30 days before their appointments. Abdominal obesity was disregarded as a sign of LD-defining case.

The documents summarizing the findings of the doctor's and participants' assessments were kept in a safe place by the principal investigator and cross-compared with the sonographic findings only after the completion of previous assessments.

Sonography

Sonographic measurements (SA-8000 EX device, Medison Co. Ltd) were performed by a single well-trained and experienced operator who was blind to the patients' medical data. Two repeated assessments were taken of each body-fat

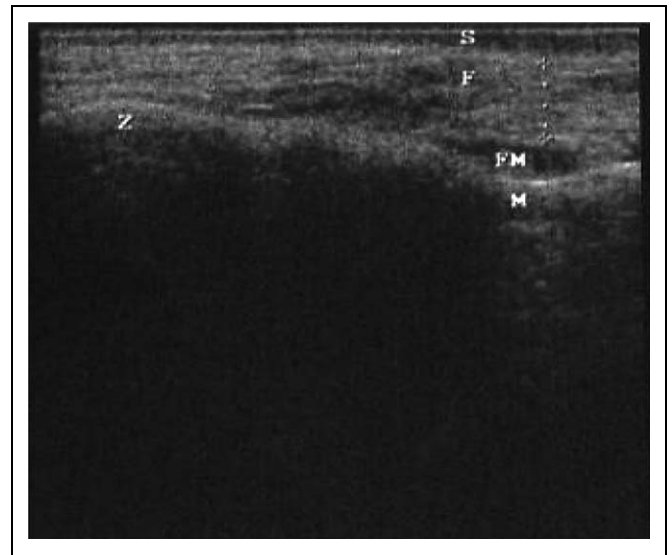


Figure 1. Assessment of face subcutaneous fat thickness. Transverse scan (10 MHz) of the most prominent part of the zygomatic bone, from the inner layer of the skin to the outer fascia of the facial musculature. S indicates skin; F, subcutaneous fat tissue; FM, facial muscle; M, malar bone; Z, zygomatic bone; M, maxilla.

compartments (BFCs; face, right upper limb, subcutaneous abdomen and visceral compartments) and the average value was entered into a standard case report form. Sonographic device calibrations had the following features: frame average = 2, edge enhanced = 0, dynamic range 105%, reject level = 2, view area = wide, tissue = normal, trapezoid = off, apex = up, frame rate = fast, and power = 80. The average elapsed time between the self-report diagnostic and sonographic assessment was 3 days.

Measurements of fat thickness were taken with a high-frequency (10 MHz) linear transducer, transversally and gently positioned on a perpendicular angle over the body surface while the patient was kept laid in the supine position without a pillow. For positioning, 3 anatomic reference points were chosen according to Martinez et al's study description.¹⁴ At the malar region, on the most prominent part of the zygomatic bone, facial fat thickness was measured from the inner layer of the skin to the outer fascia of the superficial facial musculature (Figure 1). At the upper arm region, the middle third of the right arm was placed in prone position and aligned with the body. Once the image of the humerus and biceps muscle was visualized together on the screen, the image was frozen and the subcutaneous fat thickness was measured from the inner layer of the skin to the outer fascia of the biceps (Figure 2). At the umbilical region, right above the umbilicus, fat thickness was measured from the inner layer of the skin to the upper surface of the rectus abdominis muscle, on the middle of the linea alba area, with patient holding breath (Figure 3). Visceral fat thickness was assessed at the umbilical region, with a low-frequency (3.5 MHz) transducer placed in perpendicular angle with the body surface and transversally positioned. Measurement was taken from the inner (posterior) surface of the rectus abdominis

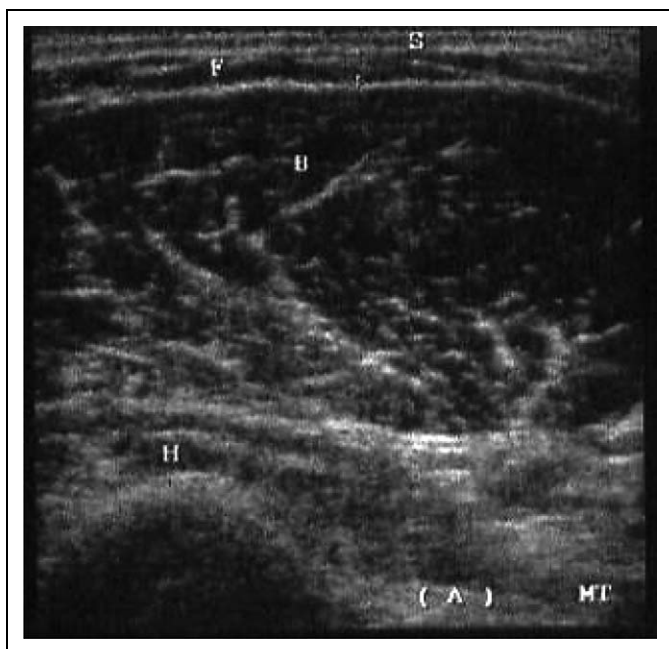


Figure 2. Assessment of upper arm subcutaneous fat thickness. Transverse scan (10 MHz) of the middle third of the right arm, from the inner layer of the skin to the outer fascia of the biceps. S indicates skin; F, subcutaneous fat tissue; B, biceps muscle; H, humerus; MT, middle third of the right arm; (A), arm.

muscle to the posterior wall of the abdominal aorta artery, right above its bifurcation according to Radominski et al's report¹⁹ (Figure 4).

All the patients gave their written consent for the assessment of their BFCs and the questionnaire, and the research protocol was approved by the Hospital's Ethics Committee.

Statistical Analysis

Association between self-reported LD and sonographic measurements was evaluated by multiple logistic regression. The variables gender and body mass index (BMI) were also included in the model as key covariates and potential confounders. Statistical significance was determined as a *P* value of <.05. The best fit and more parsimonious model was used to calculate the expected probability of LD from the sonographic measurements. Receiver operating characteristic (ROC) curves were used to examine the value that best discriminated between participants with and without self-reported LD. The expected probability of LD with the greatest sensitivity on ROC curve was chosen to determine an appropriate cutoff point for LD diagnostic. The cases with higher or equal probabilities than that of the cutoff point were considered with LD; otherwise they were considered LD-negative group.

The Cohen's kappa measured agreement between the predicted LD diagnostic based on the multiple logistic model and that formed from the self-report questionnaire.

The statistical analysis was performed with the help of the open source statistical package R, version 2.9.1.²⁰

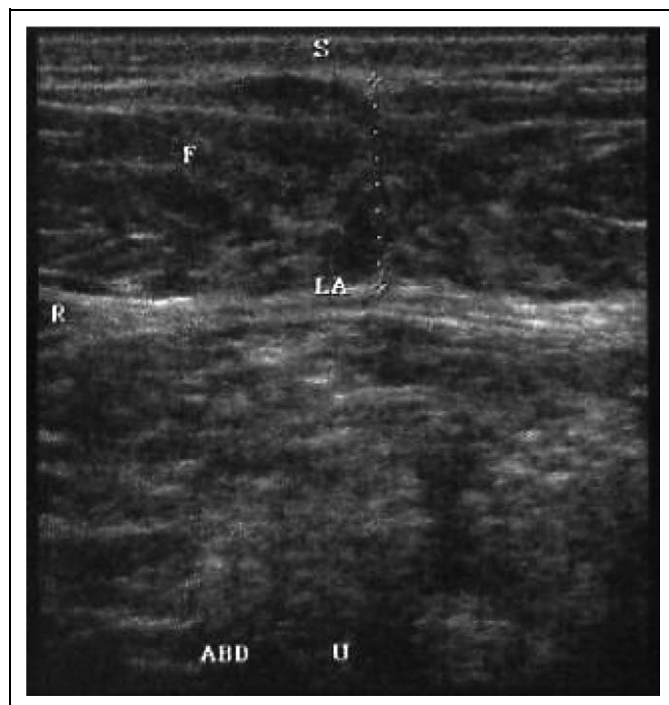


Figure 3. Assessment of abdominal subcutaneous fat thickness. Transverse scan (10 MHz) of the abdomen, from the inner layer of the skin to the upper surface of the rectus abdominis muscle. S indicates skin; F, subcutaneous fat tissue; LA, linea alba; R, rectus abdominis muscle; ABD, abdomen; U, above umbilicus.

Results

The study population was composed by 179 HIV-infected participants, of these, 81 (45.3%) reported symptoms of lipodystrophy, whereas 98 (54.7%) did not. The sample mean age was

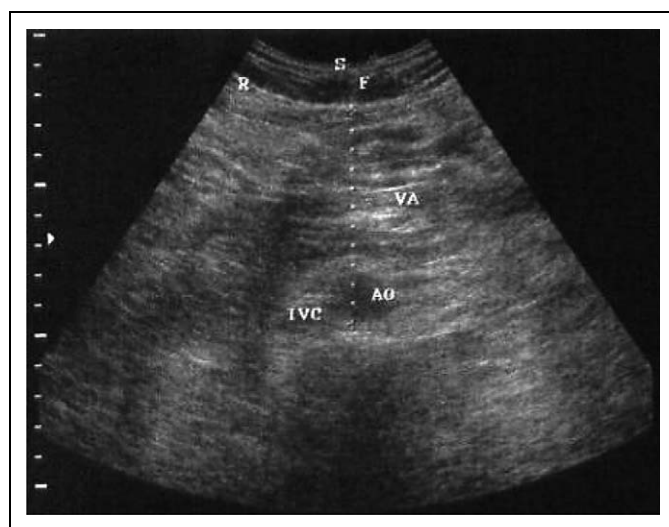


Figure 4. Assessment of visceral adipose tissue thickness. Transverse scan (3.5 MHz) from the inner (posterior) surface of the rectus abdominis muscle to the posterior wall of the abdominal aorta artery. S indicates skin; F, subcutaneous fat tissue; R, rectus abdominis muscle; VA, visceral adiposity; AO, aorta; IVC, inferior vena cava.

42 years (range of 23-77). The mean age of the LD group (49 years) was significantly higher than the mean age of the LD negative group (37 years; t test = -8.7 , $df = 177$, $P < .0001$). Most interviewees were male (72.1%), with 50 (27.9%) women, corresponding to a sex ratio of approximately 2.6:1.0 (Table 1).

The mean (\pm SD) duration of exposure to ART for participants with and without LD was 116 ± 49 and 7 ± 4 months, respectively (T test = -26.1 , $df = 176$, $P < .0001$). The body mass index (BMI) in LD-negative (25.7 ± 3.7) and LD-positive patients (23.7 ± 4.4) was significantly different (T test = 3.35 , $df = 177$, $P < .01$). The LD group consisted of 2 subgroups: 40 patients with lipoatrophy and 41 patients with a combination of lipoatrophy and lipohypertrophy features (no case of lipohypertrophy alone was observed).

The fat thickness of facial, upper limb, and subcutaneous abdomen compartments were lower in participants of the LD group than in those of the LD-negative group. Conversely, the visceral adiposity of the former group was greater than of the latter group (Table 1).

The multiple logistic model included all sonographic variables, plus gender and BMI (Table 2). The facial (odds ratio .64 [.44-.94], $P = .02$), subcutaneous abdomen (odds ratio .92 [.87-.98], $P = .01$), visceral (odds ratio 1.2 [1.10-1.22], $P = .02$) body compartment measurements were all predictive of LD. The single exception among the sonographic assessments was the upper limb fat thickness (odds ratio 0.70 [0.49-1.02], $P = .06$), that was only marginally significant and was kept in the final model.

Linearity, the main assumption of logistic regression models, was assessed by visual inspection of partial residual plots.²¹ Based on this approach, 3 influential points were excluded from the modeling process in order to meet the linearity assumption. The points excluded had the following values (sample distribution (median [25th-75th percentiles])): 1° case Face: 7.75 (3.27 [2.5-4.1]), 2° case: upper limb: 17.80 (1.50 [1.60-2.7]) and 3° case: subcutaneous abdomen: 48.55 (13.20 [6.1-20]).

Receiver operating characteristic curves showed a predicted probability of 0.64, corresponding to a cutoff point with maximum sensitivity of 69.1% (95%CI: 58%-79%) and a corresponding specificity of 94.9% (95%CI: 88%-98%) for the diagnostic of LD. Additionally, that cutoff point had respectively positive and negative predictive values in identifying cases of LD equal to 92% (95%CI: 82-97%) and 79% (95%CI: 70-86%).

The fitted multiple logistic model diagnosed LD in 61 (34%) out of 179 participants. The percentage of corrected classified cases and Kappa coefficients were 83% and 65% (CI95% 54%-77%), respectively (Table 3).

Discussion

It is estimated that 33.4 million people live with HIV in the world, of those more than 95% live in low- to middle-income countries, where approximately 4 million people are receiving ART.²² Despite a substantial increase in survival time and

Table 1. Demographic, Clinical, and Sonographic Characteristics of Patients According to the (Self-Reported) Diagnosis of Lipodystrophy

Variables	Lipodystrophy	Non-LD ^a	P Value ^c
	n = 81 (n \pm sd ^b)	n = 98 (n \pm sd)	
Age (years \pm SD)	37 \pm 9	49 \pm 10	<.0001
Male/female	55/26	74/24	
Duration of ARV therapy (mo)	114 \pm 40	7 \pm 4	<.0001
BMI (kg/m ²)	23.6 \pm 4.4	25.7 \pm 3.7	<.0001
Lipoatrophy	40 (49.4%)	–	–
Mixed pattern	41 (50.6%)	–	–
Lipohypertrophy	–	–	–
Facial ^d	2.9 \pm 1.4	3.5 \pm 1	.001
Upper limb ^d	1.5 \pm 1.5	2.3 \pm 1.8	.001
Subcutaneous abdomen ^d	11 \pm 9.2	17 \pm 9.3	<.0001
Visceral adiposity ^d	50 \pm 15.5	42 \pm 11.5	<.0001

Abbreviation: BMI, body mass index.

^a With no lipodystrophy.

^b Number plus/minus standard deviation.

^c T test P value.

^d (mm).

Table 2. Multiple Logistic Regression Model on the Association between Self-Reported Lipodystrophy and Sonographic Measurements of Body Fat Compartments Combined with Body Mass Index and Gender

Variables ^a	Crude OR (95% CI)	Adj. OR (95% CI)	P Value
Face	.65 (.5-0.85)	.64 (.44-.94)	.02
Arm	.72 (.58-0.89)	.70 (.49-1.02)	.06
Abdomen	.92 (.89-0.96)	.92 (.87-.98)	.01
Visceral	1.05 (1.02-1.07)	1.2 (1.10-1.22)	.002
Gender ^b	1.46 (.76-2.81)	23.6 (6.2-89.7)	<.0001
BMI	.88 (.81-.95)	.80 (.68-.95)	<.0001

Abbreviations: Adj. OR, adjusted OR; BMI, body mass index; OR, odds ratio; CI95%, confidence interval.

^a Sonographic variables were mm.

^b Male is the reference category.

Table 3. Agreement between Lipodystrophy (LD) Diagnoses Derived from Multiple Logistic Model and Self-Report Questionnaire^a

LD ^a (Logistic Regression Sonography)	LD (Self-Report Questionnaire)	
	LD	Non-LD
LD	56	5
Non-LD ^b	25	93

Abbreviation: LD, lipodystrophy.

^a Kappa: 0.65-IC95%: (0.54-0.77).

^b With no lipodystrophy.

quality of life associated with combined ART, a prolonged treatment has been difficult to sustain because of problems with adherence and toxic effects.^{23,24}

In the clinical practice, clinicians usually rely on patients' self-report, besides their own evaluation (subjective

information), for diagnosing LD due to its considerable advantages, such as low cost and high flexibility of design (questionnaire suit individual language abilities).²⁵ Recently, an objective case definition of lipodystrophy, which included 10 clinical, metabolic, and body composition variables, which was assessed by DEXA, was developed with 80% accuracy to diagnose lipodystrophy. However, the complexity of this method, which is based on sophisticated metabolic tests and DEXA, has restricted its use in clinical settings in most health facilities.²⁶ In our understanding, the sonographic technique could present an intermediate option between the high cost, less widely available high-tech methods and the low cost, widely available, and highly subjective self-report methods.

Alike other authors that have reported similar correlation between subjective perceptions and sonography in the subcutaneous and visceral body fat compartments,^{15,17,18,27} our study estimated a kappa statistic of substantial agreement between the findings obtained by sonographic measurements and clinical LD. Thinner facial fat compartment, upper arm, and subcutaneous abdomen fat as well as thicker visceral adiposity were associated with clinical LD, as well as sex and BMI.

With a cutoff of 0.64 in the ROC curve, the logistic model showed moderate sensitivity and high specificity. These results suggest that the adopted cutoff point was more specific than a sensitive marker of LD. Consequently, there are patients with clinical LD and negative sonographic-based test whose sonographic measurements are compatible with those from the LD-negative group. One potential explanation for the low sensitivity of sonography, in comparison to self-report, is that in the latter method, patients compare their current shape with an image of themselves retrieved from their memories. In reverse, we had just 1 sonographic measurement that could neither be compared nor discriminated concerning a loss or a gain of fat in the examined body areas, over time.

Low sensitivity poses a problem for the use of sonography to detect LD on the clinical ground as single examination, but this difficulty could be overcome if physicians included it in their clinical routine in a combination of clinical and sonographic measurements, over time, in parallel or in series, which would improve the accuracy of diagnostic tests. This approach, for instance, has been done to study the surrogate markers of immunodeficiency and metabolic alterations in HIV-infected patients.¹⁵

Other studies, using ROC curves to compute the accuracy of the sonography assessment, found specific, separate cutoffs for each one of the body compartments involved in the definition of LD.^{14,16-18} These studies also support the use of sonography to assess body fat compartments in HIV-infected persons. Since they did not fit a model to compute ROC curves, we cannot compare the accuracy of these tests with our results.

One advantage of sonography, mentioned in the literature, is its low variability (less than 5%) in measuring subcutaneous fat thickness, especially if examinations are carried out by the same operator.^{14,15} Furthermore, sonography allows measurements in different fat compartments, such as the visceral and subcutaneous abdomen (pinched belly) fat contents, which is not feasible in subjective diagnostic methods.^{2,12,28}

Padilla (2007)¹⁷ and Martinez et al (2006),²⁷ comparing CT and DEXA and sonography, reported statistical correlations between those methods in assessing fat lipodystrophy in the upper arm and subcutaneous abdomen. In the latter compartment, Spearman rank coefficient test correlations varied from 0.64 to 0.84, whereas in the former, these correlations were weak, but significant and ranked from .34 (P value $\leq .05$) to .40 (P value = .001).^{17,27} Likewise, concerning the visceral adiposity, the sonography was accurate on assessing visceral fat thickness when compared with CT ($r = .84$).¹⁷

In the literature, results are contradictory regarding the sonographic assessment of the facial compartment; some authors found a good accuracy compared with clinical methods.^{14,29,30} On the other hand, study of Carey et al³¹ reported no significant correlation between the malar region assessed by sonography and other body regions assessed by different assessment methods, as CT and DEXA. However, Martinez et al²⁷ argued against these findings, attributing their negative result to ambiguities in the study design assessed subcutaneous compartments at different sites using 2 distinct techniques, for example malar fat assessed by sonography with mid-thigh subcutaneous fat by CT, when it would be more reasonable to study the same sites with both techniques instead of studying different sites with each technique.

Moreover, other studies^{27,30} that argued for sonography pointed out that this method has been less used than CT or DEXA for the measurement of regional body fat in HIV-infected patients and still present problems in terms of standardization of the sonographic assessment of the facial compartment. Gulizia et al,³⁰ in a correspondence to the editor, proposed that technical difficulties regarding standardization might be one possible reason for the fact that Carey and collaborators³¹ did not find a correlation between gold standard methods and sonography. Finally, they all concluded that sonography should not be disregarded before proving its usefulness or not on quantifying body fat compartments; on what, we completely agree.

Limitations of our work include the impossibility to detect fat changes in the body fat compartments over time.

We believe that with proper standardization, this technique will be able to help physicians to make early diagnosis of LD and take decisions over replacing antiretroviral agents associated with LD, by other ones with an improved side-effect profile.

Declaration of Conflicting Interests

The author(s) declared no conflicts of interest with respect to the authorship and/or publication of this article.

Funding

The author(s) received no financial support for the research and/or authorship of this article.

References

1. Moreno S, Miralles C, Negro E, et al. Disorders of body fat distribution in HIV-1-infected patients. *AIDS Rev.* 2009;11(3): 126-134.

2. Santos CP, Felipe YX, Braga PE, Ramos D, Lima RO, Segurado AC. Self-perception of body changes in persons living with HIV/AIDS: prevalence and associated factors. *AIDS (Lond, Engl)*. 2005;19(suppl 4):S14-S21.
3. Monnerat BZ, Cerutti Junior C, Canicali SC, Motta TR. Clinical and biochemical evaluation of HIV-related lipodystrophy in an ambulatory population from the Hospital Universitario Cassiano Antonio de Moraes, Vitoria, ES, Brazil. *Braz J Infect Dis*. 2008;12(4):364-368.
4. Nunn AS, Fonseca EM, Bastos FI, Gruskin S, Salomon JA. Evolution of antiretroviral drug costs in Brazil in the context of free and universal access to AIDS treatment. *PLoS Med*. 2007;4(11):e305.
5. Nunn AS, da Fonseca EM, Bastos FI, Gruskin S. AIDS treatment in Brazil: impacts and challenges. *Health Aff (Millwood)*. 2009;28(4):1103-1113.
6. Viraben R, Aquilina C. Indinavir-associated lipodystrophy. *AIDS (Lond, Engl)*. 1998;12(6):F37-F39.
7. Galli M, Cozzi-Lepri A, Ridolfo AL, et al. Incidence of adipose tissue alterations in first-line antiretroviral therapy: the LipolCoNa Study. *Arch Intern Med*. 2002;162(22):2621-2628.
8. Weaver TW, Kushi LH, McGovern PG, et al. Validation study of self-reported measures of fat distribution. *Int J Obes Relat Metab Disord*. 1996;20(7):644-650.
9. Engelson ES, Kotler DP, Tan Y, et al. Fat distribution in HIV-infected patients reporting truncal enlargement quantified by whole-body magnetic resonance imaging. *Am J Clin Nutr*. 1999;69(6):1162-1169.
10. Lichtenstein KA, Ward DJ, Moorman AC, et al. Clinical assessment of HIV-associated lipodystrophy in an ambulatory population. *AIDS (Lond, Engl)*. 2001;15(11):1389-1398.
11. Grunfeld C. Basic science and metabolic disturbances. In: *Program and Abstracts of the XIV International AIDS Conference*. Barcelona, Spain; 2002.
12. Bacchetti P, Gripshover B, Grunfeld C, et al. Fat distribution in men with HIV infection. *J Acquir Immune Defic Syndr*. 2005;40(2):121-131.
13. Tien PC, Benson C, Zolopa AR, Sidney S, Osmond D, Grunfeld C. The study of fat redistribution and metabolic change in HIV infection (FRAM): methods, design, and sample characteristics. *Am J Epidemiol*. 2006;163(9):860-869.
14. Martinez E, Bianchi L, Garcia-Viejo MA, Bru C, Gatell JM. Sonographic assessment of regional fat in HIV-1-infected people. *Lancet*. 2000;356(9239):1412-1413.
15. Asensi V, Martin-Roces E, Collazos J, et al. Association between physical and echographic fat thickness assessments and a lipodystrophy grading scale in lipodystrophic HIV patients: practical implications. *AIDS Res Hum Retroviruses*. 2006;22(9):830-836.
16. Guimaraes MM, de Oliveira AR, Jr., Penido MG, et al. Ultrasonographic measurement of intra-abdominal fat thickness in HIV-infected patients treated or not with antiretroviral drugs and its correlation to lipid and glycemic profiles. *Ann Nutr Metab*. 2007;51(1):35-41.
17. Padilla S, Gallego JA, Masia M, Ardoy F, Hernandez I, Gutierrez F. Ultrasonography and anthropometry for measuring regional body fat in HIV-infected patients. *Curr HIV Res*. 2007;5(5):459-466.
18. Grima PF, Chiavaroli R, Grima P. Ultrasonographic assessment of lipodystrophy in HIV-1-infected patients. *Radiol Med*. 2009;114(1):141-151.
19. Radominski RB, Vezozzo DP, Cerri GG, Halpern A. O uso da ultrasonografia na avaliação da distribuição de gordura abdominal. *Arquivos Brasileiros de Endocrinologia Metabologia*. 2000;44(1):5-12.
20. Team RDC. *R: A Language and Environment for Statistical Computing*. 2.9.1 ed. Vienna, Austria: R Foundation for Statistical Computing; 2009.
21. Fox J. Diagnosing problems in linear and generalized linear models. In: Publications S, ed. *An R and S-Plus Companion to Applied Regression*. Thousand Oaks, CA; 2002:192-201.
22. AIDS epidemic update 2009. 2009. http://data.unaids.org/pub/Report/2009/JC1700_Epi_Update_2009_en.pdf. Accessed May 16, 2010.
23. Effect of sociodemographic, clinical-prophylactic and therapeutic procedures on survival of AIDS patients assisted in a Brazilian outpatient clinic. 2005. http://www.scielo.br/scielo.php?script=sci_arttext&pid=S1415-790X2005000300007&lng=pt&nrm=iso. Accessed May 21, 2010.
24. Villarroya F, Domingo P, Giralt M. Drug-induced lipotoxicity: lipodystrophy associated with HIV-1 infection and antiretroviral treatment. *Biochim Biophys Acta*. 2010;1801(3):392-399.
25. Chesney MA. Factors affecting adherence to antiretroviral therapy. *Clin Infect Dis*. 2000;30(suppl 2):S171-S176.
26. Carr A, Emery S, Law M, Puls R, Lundgren JD, Powderly WG. An objective case definition of lipodystrophy in HIV-infected adults: a case-control study. *Lancet*. 2003;361(9359):726-735.
27. Martinez E, Milinkovic A, Bianchi L, Gatell JM. Considerations about the value of sonography for the measurement of regional body fat. *AIDS (Lond, Engl)*. 2006;20(17):465-466.
28. Carr A, Samaras K, Thorisdottir A, Kaufmann GR, Chisholm DJ, Cooper DA. Diagnosis, prediction, and natural course of HIV-1 protease-inhibitor-associated lipodystrophy, hyperlipidaemia, and diabetes mellitus: a cohort study. *Lancet*. 1999;353(9170):2093-2099.
29. Asensi V, Martin-Roces E, Carton J, et al. Perirenal fat diameter measured by echography could be an early predictor of lipodystrophy in HIV type 1- infected patients receiving highly active antiretroviral therapy. *Clin Infect Dis*. 2004;39(2):240-247.
30. Gulizia R, Vercelli A, Gervasoni C, et al. Controversy concerning role of ultrasonographic lipodystrophy assessments in HIV patients. *AIDS (Lond, Engl)*. 2006;20(5):789-790.
31. Carey D, Wand H, Martin A, et al. Evaluation of ultrasound for assessing facial lipodystrophy in a randomized, placebo-controlled trial. *AIDS (Lond, Engl)*. 2005;19(12):1325-1327.