

Atazanavir inhibits SARS-CoV-2 replication and pro-inflammatory cytokine production

Natalia Fintelman-Rodrigues^{1,8#}, Carolina Q. Sacramento^{1,8#}, Carlyle Ribeiro Lima^{8,#}, Franklin Souza da Silva^{2,8}, André C. Ferreira^{1,3,8}, Mayara Mattos^{1,8}, Caroline S. de Freitas^{1,8}, Vinicius Cardoso Soares¹, Suelen da Silva Gomes Dias¹, Jairo R. Temerozo⁴, Milene Miranda⁵, Aline R. Matos⁵, Fernando A. Bozza^{6,7}, Nicolas Carels⁸, Carlos Roberto Alves², Marilda M. Siqueira⁵, Patrícia T. Bozza¹, Thiago Moreno L. Souza^{1,8,*}

- These authors contributed equally to this work

1 – Laboratório de Imunofarmacologia, Instituto Oswaldo Cruz (IOC), Fundação Oswaldo Cruz (Fiocruz), Rio de Janeiro, RJ, Brazil.

2 – Laboratório de Biologia Molecular e Doenças Endêmicas, IOC, Fiocruz, Rio de Janeiro, RJ, Brazil.

3 – Universidade Iguaçu, Nova Iguaçu, RJ, Brazil.

4 – Laboratório de Pesquisas em Timo, IOC, Fiocruz, Rio de Janeiro, RJ, Brazil.

5 – Laboratório de Vírus Respiratório e do Sarampo, IOC, Fiocruz, Rio de Janeiro, RJ, Brazil.

7 – Instituto Nacional de Infectologia Evandro Chagas, Fiocruz, Rio de Janeiro, RJ, Brazil

8 – Instituto D'or de Pesquisa e Ensino, Rio de Janeiro, RJ, Brazil

6 - National Institute for Science and Technology on Innovation in Diseases of Neglected Populations (INCT/IDNP), Center for Technological Development in Health (CDTS), Fiocruz, Rio de Janeiro, RJ, Brazil.

***Correspondence footnote:**

Thiago Moreno L. Souza, PhD

Fundação Oswaldo Cruz (Fiocruz)
Centro de Desenvolvimento Tecnológico em Saúde (CDTS)
Instituto Oswaldo Cruz (IOC)
Pavilhão Osório de Almeida, sala 16
Av. Brasil 4365, Manguinhos, Rio de Janeiro - RJ, Brasil, CEP 21060340
Tel.: +55 21 2562-1311
Email: tmoreno@cdts.fiocruz.br

Abstract

Severe acute respiratory syndrome coronavirus 2 (SARS-CoV-2) is the etiological agent of the ongoing pandemic of 2019 CoV disease (COVID-19), which is already responsible for far more deaths than were reported during the previous public health emergencies of international concern provoked by two related pathogenic coronaviruses (CoVs) from 2002 and 2012. The identification of any clinically approved drug that could be repurposed to combat COVID-19 would allow the rapid implementation of potentially life-saving procedures to complement social distancing and isolation protocols. The major protease (Mpro) of SARS-CoV-2 is considered a promising target for drug interventions, based on results from related CoVs with lopinavir (LPV) an HIV protease inhibitor, that that can inhibit the Mpro of 2002 SARS-CoV. However, limited evidence exists for other clinically approved anti-retroviral protease inhibitors that may bind more efficiently to Mpro from SARS-CoV-2 and block its replication. Of high interest is atazanavir (ATV) due to its documented bioavailability within the respiratory tract, which motivated our evaluation on its ability to impair SARS-CoV-2 replication through a series of *in vitro* experiments. A molecular dynamic analysis showed that ATV could dock in the active site of SARS-CoV-2 Mpro with greater strength than LPV and occupied the substrate cleft on the active side of the protease throughout the entire molecular dynamic analysis. In a cell-free protease assay, ATV was determined to block Mpro activity at a concentration of 10 μ M. Next, a series of assays with *in vitro* models of virus infection/replications were performed using three cell types, Vero cells, a human pulmonary epithelial cell line and primary human monocytes, which confirmed that ATV could inhibit SARS-CoV-2 replication, alone or in combination with ritonavir (RTV). In addition, the virus-induced levels of IL-6 and TNF- α were reduced in the presence of these drugs, which performed better than chloroquine, a compound recognized for its anti-viral and anti-inflammatory activities. Together, our data strongly suggest that ATV and ATV/RTV should be considered among the candidate repurposed drugs undergoing clinical trials in the fight against COVID-19.

1) Introduction

Coronaviruses (CoVs) are single-stranded positive sense RNA viruses with large enveloped nucleocapsids that are able to infect a range of hosts including both animals and humans¹. Although a number of human CoV are known to circulate seasonally, two highly pathogenic variants emerged in the 21st century that cause life-threatening infection, the severe acute respiratory syndrome (SARS-CoV) and middle-east respiratory syndrome (MERS-CoV)². At the end of 2019, a novel variant of SARS-CoV (SARS-CoV-2) appeared in the citizens of the City of Wuhan, China that is believed to have spilled over to humans from animal reservoirs, most likely bats and/or pangolins³. The novel 2019 CoV is phylogenetically closer to SARS-CoV (from the 2002 outbreak) than MERS-CoV (from 2012 outbreak)^{2,3}. Both SARS- and MERS-CoV raised international public health concerns with rates of mortality of 10 and 35%, respectively^{4,5}. Soon after its discovery, the contemporary SARS-CoV-2 became a pandemic threat, with the number of confirmed infections ramping up globally⁶. To date, SARS-CoV-2 is responsible for 10 times more deaths than the total sum from SARS- and MERS-CoV, with more casualties daily that are continue to scale up⁶.

Currently, the most effective response to the SARS-CoV-2 pandemic has been self-quarantining and social distancing to avoid contact between infected and uninfected individuals that can flatten the virus dissemination curve, which aim to reduce the burden on medical resources to prevent loss of service for those with the highest need. While these social actions can disrupt virus transmission rates, they are not expected to reduce the absolute number of infected individuals. Furthermore, these strategies are also provoking a severe reduction in global economic activity⁷. To effectively combat the impact of SARS-CoV-2 on infected individuals, and society as a whole, it is essential to identify antiviral drugs for immediate use, as well as develop new drugs and a vaccine for long-term solutions to the disease associated with SARS-CoV-2 (COVID-19).

Repurposing of clinically approved drugs is the fastest pathway towards an effective response to a pandemic outbreak⁸. Some of the most promising antiviral candidates against SARS-CoV-2 have been under investigation since the outbreak of SARS-CoV in 2002. Building on this continuous investigation, an unprecedented effort to run a global clinical trial, called SOLIDARITY, is ongoing under the auspicious of the World Health Organization (WHO) and the United Nations (UN)⁹. This mega trial has been

putting forward lopinavir (LPV)/ritonavir (RTV), in combination or not with interferon- β (IFN- β), chloroquine (CQ) and remdesivir to treat COVID-19⁹. LPV, RTV and remdesivir target viral enzymes, while the actions of CQ and IFN- β target host cells.

The most successful antiviral drugs often directly target viral enzymes¹⁰. For CoVs, its major protease (Mpro) has been a promising drug target for almost two decades, starting with early studies on 2002 SARS-CoV that showed this enzyme to be inhibited by LPV/RTV, inhibitors of HIV protease¹¹. Mpro is required during the CoV replication cycle to process viral polyprotein¹². Highly pathogenic CoVs contain two open reading frames, ORF1a and ORF1b, that are translated by host ribosomes into their two respective viral polyproteins, pp1a and pp1ab. ORF1a encodes two cysteine proteases, the papain-like protease (PLpro) and Mpro. While PLpro cuts the polyprotein at three sites, Mpro is responsible for cleavage at 11 another locations that, together, produce the 16 nonstructural proteins.

In a combined therapy of LPV with RTV, LPV is included as the principle antiviral compound and RTV as an inhibitor cytochrome p450¹³. Although RTV can also display weak anti-protease activity, at current therapeutic dosages its activity enhances the plasmatic concentration of the main antiviral compound by its ability to block drug metabolism. However, in an open-label clinical trial using LPV/RTV against COVID-19, their combination showed a limited benefit for treated patients¹⁴. In the early 2000s, another contemporary antiretroviral protease inhibitor, atazanavir (ATV), replaced LPV/RTV due to fewer side effects for the patients^{15,16}. Contemporarily, *in silico* evidence suggested that other HIV protease inhibitors would target SARS-CoV-2 Mpro better than LPV or RTV, that included ATV¹⁷. Importantly, ATV has been described to reach the lungs after intravenous administration^{18,19}. Moreover, a proposed secondary use of ATV to treat pulmonary fibrosis suggested that this drug could functionally reach the lungs¹⁹.

The seriousness of COVID19 and the need for an immediate intervention, along with this series of observations with LPV, RTV and ATV, motivated us to evaluate the susceptibility of SARS-CoV-2 to ATV. Since ATV is available as a clinical treatment alone or in combination with RTV, both therapies were studied here, which for the first time describes that SARS-CoV-2 Mpro is a target for ATV. Further, ATV alone or withRTV could inhibit viral replication in cell culture models of infection that also prevented the release of a cytokine storm-associated mediators. Our timely data

highlights an additional therapeutic approach against COVID-19 that should be considered for clinical trials.

2) Results

2.1) ATV docks into SARS-CoV-2 Mpro more spontaneously and stably than LPV

The targeting of the enzyme Mpro from SARS-CoV-2 by both ATV and LPV was evaluated by molecular modeling using a representative structure (PDB:6LU7). As shown in Figure 1, ATV occupied the S1* and S1 regions, whereas LPV occupied S1* and S2 regions with calculated free energy scores for LPV and ATV of -59.87 and -65.49 Kcal/mol, respectively. The more spontaneous binding of ATV, suggested by its lower energy score, may be related to its projected ability to form hydrogen bonds with the amino acid residues Asn142, His164, and Glu166 in Mpro, whereas the binding of LPV depends on hydrophobic interactions (Figure 2).

A molecular dynamic analysis revealed that the root-mean-square deviation (RMSD) for the SARS-CoV-2 Mpro backbone presented different conformations in complex with ATV or LPV (Figure S1). LPV was initially at a 3.8 Å distance from the catalytic residue Cys145 (Figure S2A and S3A), which after conformational changes extended to a distance equivalent to 7.17 Å (Figure 3A and 4A) that is projected to most likely limit the extent of its antiviral inhibition. Another critical residue, His41, was satisfactorily at a distance of 2.89 Å from bound LPV (Figure 3A and 4A). While ATV did not interact with His41 or Cys145 (Figure S2B and S3B), its position remained stable within the active site independent of conformational changes displayed by the enzyme (Figure 3B and 4B). The steric occupation of the cleft in the enzymatic active site by ATV, which blocks the residues of the catalytic amino acids, can be explained by its stronger interactions with Mpro, compared to LPV, through multiple hydrogen bonds during stationary docking and molecular dynamics (Tables S1-S3).

2.2) ATV inhibits SARS-CoV-2 Mpro enzymatic activity

Next, we evaluated whether ATV could inhibit SARS-CoV-2 Mpro activity by partially purifying the enzyme in cellular fractions obtained from SARS-CoV-2-infected cells and performing zymographic profiles. To assure that the proteinase profiles were not dependent on cellular enzymes, similar fractions of mock-infected cells were also

prepared for comparison. The results from cysteine proteinase zymographic profiles in gelatinolytic gels revealed a cellular related band of approximately 70 kDa under both conditions (Figure 5, lanes Nil). This activity was blocked by the drug E-64, an epoxide that acts as an irreversible inhibitor of cysteine proteases (Figure 5, lanes E-64). In the infected cells, a region of activity was observed between 31 and 38 kDa that was not present in the mock fraction. This zone of molecular weight is consistent with expected size of SARS-CoV-2 Mpro as was the inhibition of activity in this region by exposure of the gels to 10 μ M of ATV, which did not affect the cellular cysteine proteinase at 70 kDa (Figure 5, lanes ATV). Further confirmation of the presence and activity of SARS-CoV-2 Mpro in fractions from infected cells was obtained by treatment with RTV, which inhibited activity in the molecular range of 31-38 kDa without a change in the 70 kDa region (Figure 5, lanes RTV). These data are consistent with predictions from the molecular modeling and dynamic analyses that suggested that ATV could bind and target the enzymatic activity of the Mpro encode by the novel 2019 CoV.

2.3) SARS-CoV-2 is susceptible to ATV in different cell types

We extended our investigation to the inhibition of SARS-CoV-2 replication by ATV using a range of different cellular systems. Vero cells are a well-known model system that produce high virus titers and display visual cytopathic effects to viral infections. ATV alone, or in combination with RTV, inhibited infectious virus production and SARS-CoV RNA levels in Vero cells (Figure 6A and B, respectively). CQ was used as a positive control because of its inclusion in the SOLIDARITY trial due to its encouraging pre-clinical and clinical results against SARS-CoV-2 replication and COVID-19, respectively^{20,21}. ATV/RTV was the most potent therapy tested; with an EC₅₀ of $0.5 \pm 0.08 \mu$ M. ATV alone and CQ's potencies were $2.0 \pm 0.12 \mu$ M and $1.0 \pm 0.07 \mu$ M, respectively. SARS-CoV-2 susceptibility to CQ is consistent with recent reports in the literature²⁰, validating our analysis. The ATV/RTV, ATV, and CQ cytotoxicity values, CC₅₀, were $280 \pm 3 \mu$ M, $312 \pm 8 \mu$ M and $259 \pm 5 \mu$ M, respectively. Our results indicate that the selectivity index (SI, which represents the ratio between the CC₅₀ and EC₅₀ values) for ATV/RTV, ATV and CQ were 560, 156 and 259, respectively, which shows that ATV/RTV has a high therapeutic potential that was greater than CQ.

Since the results regarding the pharmacologic activity of ATV and ATV/RTV against SARS-CoV-2 replication in Vero cells were promising, we next investigated

whether the proposed drug therapies could inhibit virus replication in a human epithelial pulmonary cell line (A549). ATV alone showed a nearly 10-fold increase in potency for inhibiting SARS-CoV-2 replication in A549 (Figure 6C) compared to Vero cells (Figure 6B). ATV/RTV and CQ were similarly potent in inhibiting virus replication in both cell types (Figure 6B and C). ATV/RTV, ATV and CQ EC_{50} values to inhibit SARS-CoV-2 replication in A549 cells were $0.60 \pm 0.05 \mu\text{M}$, $0.22 \pm 0.02 \mu\text{M}$ and $0.89 \pm 0.02 \mu\text{M}$, respectively. *In vitro* results confirmed the rationale that SARS-CoV-2 would be susceptible to ATV that included cells derived from the respiratory tract.

2.4) ATV prevents cell death and pro-inflammatory cytokine production in SARS-CoV-2-infected monocytes.

Recent reports on the COVID-19 outbreak have implicated that an increase in the levels of lactate dehydrogenase (LDH) and interleukin 6 (IL-6) is associated with mortality²². Viral infection in the respiratory tract often triggers the migration of blood monocytes to orchestrate the transition from innate to adaptive immune responses²³. For these reasons, ATV and ATV/RTV were tested at suboptimal (1 μM) or optimal (10 μM) doses in a SARS-CoV-2-infection model utilizing human primary monocytes.

ATV/RTV and CQ were similarly efficient to inhibit viral replication in the human monocytes (Figure 7A). Virus infection increased cellular mortality by 75%, which was prevented by ATV, at both doses tested, and by ATV/RTV, at 10 μM (Figure 7B). As a control, detergent treatment completely destroyed all cells (Figure 7B). Moreover, we observed that infections by SARS-CoV-2 triggered the expected increase in the IL-6 levels in the culture supernatant, which ranged from 20- to 60-fold depending on the cell donor (Figure 7C, open circles in nil-treated cells). The virus-induced enhancement of IL-6 levels were significantly prevented by treatment with ATV at 10 μM , ATV/RTV at both 1 and 10 μM and CQ at 10 μM (Figure 7C). Another biomarker of uncontrolled pro-inflammatory cytokine response, TNF- α , was up-regulated 40-fold during virus infection (Figure 7D). Only the combination of ATV/RTV could significantly prevent the induction of TNF- α release (Figure 7D). Altogether, our results confirm that ATV and ATV/RTV should not be ignored as an additional therapeutic option against COVID-19.

3) Discussion

In these two decades of the 21st century, the human vulnerability to emerging viral diseases has been notable²⁴. The emergence of infectious disease highlights the undeniable fact that existing countermeasures are inefficient to prevent virus spill over and diseases outbreak. Preclinical data on the susceptibility of an emerging virus to clinically approved drugs can allow for the rapid mobilization of resources towards clinical trials⁸. This approach proved feasible for combating the Zika, yellow fever and chikungunya outbreaks experienced in Brazil over the past 5 years, when our group demonstrated that sofosbuvir, a blockbuster drug against hepatitis C, could represent a compassionate countermeasure against these diseases²⁵⁻²⁹.

Currently, the rate of SARS-CoV-2 dissemination has become one of the most rapidly evolving pandemics known in modern times with the number of cases and deaths doubling every week and the peak of the pandemic has yet to arrive⁶. The existence of several ongoing clinical trials against COVID-19 reinforces the suggestion that drug repurposing represents the fastest approach to identify therapies to emerging infectious disease⁸. The WHO/UN, under the auspicious of the SOLIDARITY trial, have highlighted the most promising anti-CoV drugs, such as LPV/RTV with or without interferon- β , CQ and remdesivir³⁰. Here, we provide preclinical evidence that another HIV protease inhibitor, ATV, can inhibit the activity of a critical protease of SARS-CoV-2, Mpro, and that this inhibition can extend to a disruption of viral replication as well as the release of cytokine storm-associated mediators associated with viral infection. The results suggest that the performance of ATV could be better than LPV and strongly support that inclusion of ATV-based therapies in clinical trials for COVID-19 either alone, in combination with RTV or both.

Kaletra[®] is an LPV/RTV formulation from Abbot Laboratories that was approved by Food and Drug Administration (FDA) in 2000 and was evaluated for use in the treatment during the SARS-CoV outbreak in 2002 and again for MERS-CoV. Its continued evaluation with the SARS-CoV-2 outbreak is a logical choice due to the conservation of the Mpro among these highly pathogenic viruses^{31,32}. Nevertheless, information on the susceptibility of SARS-CoV-2 to other antiviral protease inhibitors that have been approved since 2003 has been scarce.

ATV was approved in 2003, and become a wider prescribed drug among HIV-infected individuals, than LPV, including for critically ill patients¹⁶. ATV shows a safer profile than LPV in both short- and long-term therapeutic regimens^{15,33}. ATV has a

documented bioavailability to reach the respiratory tract^{18,34}, which lead to its proposed use against pulmonary fibrosis¹⁹. However, it is not currently under consideration for clinical trials against COVID-19.

The potencies of LPV and LPV/RTV against CoV are from 10 to 8 μ M, respectively³². Based on our data, ATV and ATV/RTV are at least 10 times more potent. The ATV and ATV/RTV *in vitro* potencies are comparable to other small molecule inhibitors of the SARS-CoV-2, such as remdesivir and CQ²⁰. The improved potency of ATV, in comparison to LPV, may be at least in part due to its multiple hydrogen bond driven interactions within the Mpro active site. Other investigators have also recognized a wider range of interactions of ATV and Mpro compared to LPV^{17,35}, although none provided functional evidence through phenotypic assays as presented here. Neither ATV nor LPV displayed any interactions with the catalytic dyad of Cys145 and His41 at the start of the molecular dynamic simulations. However, important interactions were observed at its end, such as LPV-His41 and ATV-Glu166. Glu166 is one of the residues that promotes the opening of Mpro for its substrate to interact with the active site^{36,37}.

LPV/RTV was the first line of defense for early patients with COVID-19³¹. In patients with severe COVID-19, the open-labeled clinical trial with LPV/RTV revealed that treated patients had 5% less deaths and better clinical improvement than controls¹⁴. Throughout the course of this study, LPV/RTV-treated patients continued to shed SARS-CoV-2 at the same magnitude and duration of the control group¹⁴, limiting the enthusiasm on the part of the medical and scientific community for this therapeutic option. In this context, ATV and/or ATV/RTV should not be ignored in the treatment of this novel respiratory disease. Indeed, our results demonstrate that the potency of ATV and ATV/RTV potency against SARS-CoV-2 in A549 cells is likely to be consistent with their bioavailability in the lungs in experimental models^{18,34}.

Highly pathogenic respiratory viruses, such as influenza A virus, have been associated with a cytokine storm that describes an uncontrolled pro-inflammatory cytokine response^{38,39}. Cytokine storms also seem to be highly relevant for pathogenic human CoVs⁴⁰. Contemporary investigations on SARS-CoV-2 strongly suggest the involvement of cytokine storm with disease severity²². COVID-19 mortality is associated with enhanced IL-6 levels and consistent cell death, as measured by LDH

release²². We showed that ATV and ATV/RTV decreased IL-6 release in SARS-CoV-2-infected human primary monocytes. Moreover, we also included in our analysis TNF- α , another hallmark of inflammation during respiratory virus infections^{22,41}. Our results revealed that cellular mortality and cytokine storm-associated mediators were reduced after treatment with the repurposed antiretroviral drugs used in this study.

Among the most promising anti-SARS-CoV-2 drugs, CQ, IFN- β and LPV displayed a higher toxic profile than ATV. Moreover, ATV and ATV/RTV have *in vitro* antiviral potencies comparable to CQ and remdesivir, which were superior to LPV/RTV. In summary, our study highlights a new option among clinically approved drugs that should be considered in ongoing clinical trials for an effective treatment for COVID-19.

Material and Methods

4.1. Reagents.

The antiviral ATV, ATV/RTV and CQ were received as donations from Instituto de Tecnologia de Fármacos (Farmanguinhos, Fiocruz). ATV/RTV was prepared in the proportion of 3:1 as the pharmaceutical pills are composed of 300 mg ATV and 100 mg RTV daily. ELISA assays were purchased from R&D Bioscience. All small molecule inhibitors were dissolved in 100% dimethylsulfoxide (DMSO) and subsequently diluted at least 10⁴-fold in culture or reaction medium before each assay. The final DMSO concentrations showed no cytotoxicity. The materials for cell culture were purchased from Thermo Scientific Life Sciences (Grand Island, NY), unless otherwise mentioned.

Triton X-100 (TX-100), 3-[(3-Cholamidopropyl)dimethylammonio]-1-propanesulfonate hydrate (CHAPS), 1,2,3-Propanetriol (glycerol), bovine serum albumin (BSA), Phosphate-buffered saline (PBS), N-benzyloxycarbonyl-L-phenylalanyl-L-arginine 7-amino-4-methylcoumarin (Z-FR-AMC; $\epsilon = 1.78 \times 10^4 \text{ M}^{-1} \text{ cm}^{-1}$), dithiothreitol (DTT) and trans-epoxysuccinyl-L-leucylamido(4-guanidino)butane (E-64) were purchased from Sigma Aldrich Chemical Co. (St. Louis, MO, USA). HiTrap Q FF anion exchange chromatography column (HiTrap Q FF) was purchase from GE Healthcare Life Sciences. Micro-bicinchoninic acid (BCA) protein assay kit was purchased from Pierce Chemical Co. (Appleton, WI). All other reagents were of analytical grade or better.

4.2. Cells and Virus

African green monkey kidney (Vero, subtype E6) and A549 (human lung epithelial cells) cells were cultured in high glucose DMEM with 10% fetal bovine serum (FBS; HyClone, Logan, Utah), 100 U/mL penicillin and 100 µg/mL streptomycin (Pen/Strep; ThermoFisher) at 37 °C in a humidified atmosphere with 5% CO₂.

Human monocyte-derived macrophages (MDMs) were obtained through plastic adherence of peripheral blood mononuclear cells (PBMCs). In brief, PBMCs were obtained from buffy coat preparations of healthy donors by density gradient centrifugation (Ficoll-Paque, GE Healthcare). PBMCs (2.0×10^6 cells) were plated onto 48-well plates (NalgeNunc) in RPMI-1640 without serum for 2 to 4 h. Non-adherent cells were removed and the remaining monocytes were maintained in DMEM with 5% human serum (HS; Millipore) and penicillin/streptomycin. The purity of human monocytes was above 95%, as determined by flow cytometric analysis (FACSscan; Becton Dickinson) using anti-CD3 (BD Biosciences) and anti-CD16 (Southern Biotech) monoclonal antibodies.

SARS-CoV-2 was prepared in Vero E6 cells from an isolate contained on a nasopharyngeal swab obtained from a confirmed case in Rio de Janeiro, Brazil. Viral experiments were performed after a single passage in a cell culture in a 150 cm² flasks with DMEM plus 2% FBS. Observations for cytopathic effects were performed daily and peaked 4 to 5 days after infection. All procedures related to virus culture were handled in a biosafety level 3 (BSL3) multiuser facility according to WHO guidelines. Virus titers were determined as the tissue culture infectious dose at 50% (TCID₅₀/mL). Virus stocks were kept in - 80 °C ultralow freezers.

The virus strain was sequenced to confirm the virus identity and its complete genome is publicly deposited (<https://nextstrain.org/ncov>: Brazil/RJ-314/2020 or GISAID EPI ISL #414045).

4.3. Cytotoxicity assay

Monolayers of 1.5×10^4 Vero cells in 96-well plates were treated for 3 days with various concentrations (semi-log dilutions from 1000 to 10 µM) of ATV, ATV/RTV or CQ. Then, 5 mg/ml 2,3-bis-(2-methoxy-4-nitro-5-sulphophenyl)-2H-tetrazolium-5-carboxanilide (XTT) in DMEM was added to the cells in the presence of 0.01% of N-methyl dibenzopyrazine methyl sulfate (PMS). After incubating for 4 h at 37 °C, the plates were measured in a spectrophotometer at 492 nm and 620 nm. The 50% cytotoxic

concentration (CC_{50}) was calculated by a non-linear regression analysis of the dose–response curves.

4.4. Yield-reduction assay

Cells were infected with a multiplicity of infection (MOI) of 0.01. Vero or A549 cells were infected at densities of 5×10^5 cells/well. Human primary monocytes were infected at density of $2-8 \times 10^5$ cells/well, depending on the endogenous characteristic of the cell donor. Infections were performed in 48-well plates for 2h at 37 °C. The cells were washed, and various concentrations of compounds were added to DMEM with 2% FBS. After 48h, supernatants were collected and harvested virus was quantified by real time RT-PCR and infectious titers by $TCID_{50}/mL$. A variable slope non-linear regression analysis of the dose-response curves was performed to calculate the concentration at which each drug inhibited the virus production by 50% (EC_{50}).

4.5. Virus titration

Monolayers of Vero cells (2×10^4 cell/well) in 96-well plates were infected with a log-based dilution of supernatants containing SARS-CoV-2 for 1h at 37°C. Cells were washed, fresh medium added with 2% FBS and 3 to 5 days post infection the cytopathic effect was scored in at least 10 replicates per dilution by independent readers. The reader was blind with respect to source of the supernatant. A Reed and Muench scoring method was employed to determine $TCID_{50}/mL$ ⁴².

4.6. Molecular detection of virus RNA levels.

The total RNA from a culture was extracted using QIAamp Viral RNA (Qiagen®), according to manufacturer’s instructions. Quantitative RT-PCR was performed using QuantiTect Probe RT-PCR Kit (Quiagen®) in an ABI PRISM 7500 Sequence Detection System (Applied Biosystems). Amplifications were carried out in 25 μ L reaction mixtures containing 2 \times reaction mix buffer, 50 μ M of each primer, 10 μ M of probe, and 5 μ L of RNA template. Primers, probes, and cycling conditions recommended by the Centers for Disease Control and Prevention (CDC) protocol were used to detect the SARS-CoV-2⁴³. The standard curve method was employed for virus quantification. For reference to the cell amounts used, the housekeeping gene RNase P was amplified. The Ct values for this target were compared to those obtained to different cell amounts, 10^7 to 10^2 , for calibration.

4.7. Measurements Inflammatory Mediators and cell death marker

The levels of TNF- α , IL-6 and LDH were quantified in the monocyte supernatants from infected and uninfected cells. ELISA for TNF- α and IL-6 required 100 μ L of supernatants to be exposed to capture antibody in 96-well plates. After a 2h incubation period at room temperature (RT), the detection antibody was added. Plates were incubated for another 2h at RT. Streptavidin-HRP and its substrate were added, incubated for 20 minutes and the optical density was determined using a microplate reader set to 450 nm.

Extracellular lactate dehydrogenase (LDH) was quantified using Doles[®] kit according to manufacturer's instructions. Supernatant was centrifuged at 5,000 rpm for 1 minute, to remove cellular debris. A total of 25 μ L of supernatant was placed into 96-well plates and incubated with 5 μ L of ferric alum and 100 μ L of LDH substrate for 3 minutes at 37 °C. Nicotinamide adenine dinucleotide (NAD, oxidized form) was added followed by the addition of a stabilizing solution. After a 10 min incubation, plates were measured in a spectrophotometer at 492 nm.

4.8. Molecular docking

ATV (PubChem CID: 148192) and LPV (PubChem CID: 92727) were used as inhibitors of the SARS-CoV-2 Mpro. ATV and LPV were prepared using the Generalized Amber Force Field (GAFF) and their charges were obtained using the AM1-BCC loading scheme^{44,45}.

Molecular docking experiments were performed with DOCK 6.9⁴⁶ for identifying the binding site of the Mpro. SARS-CoV-2 Mpro structure was obtained from Protein Data Bank (RCSB PDB, <http://www.rcsb.org>), under the accession code #6LU7⁴⁷. The active site region was identified by using a complexed peptide (N-[(5-methylisoxazol-3-yl)carbonyl]alanyl-l-valyl-n~1~-(1r,2z)-4-(benzyloxy)-4-oxo-1-[[3r)-2-oxopyrrolidin-3-yl]methyl}but-2-enyl)-l-leucinamide) as a guide. The creation of the DOCK 6.9 input files for docking was performed using Chimera 1.14⁴⁸.

The docking of ligands was performed in a box of 10 Å edges with its mass center matching that of the complexed peptide. Each scan produced 20 conformations for each ligand with the best score being used for molecular dynamics simulations.

4.9. Molecular dynamics

Since the tertiary structure (3D) of the SARS-CoV-2 Mpro is a homodimer, we focused the molecular dynamics only one chain, henceforward chain A. Molecular dynamics calculations were performed using NAMD 2.9⁴⁹ and Charmm27* force field⁵⁰ at pH 7, i.e., with deprotonated Glu and Asp, protonated Arg and Lys, and neutral His with a protonated Ne atom. This all-atom force field has been able to fold properly many soluble proteins⁵¹⁻⁵³. The soluble proteins were centered in a cubic box of TIP3P water molecules⁵⁴; the box extended 1.2 nm outside the protein on its four lateral sides, and the appropriate numbers of Na⁺ and Cl⁻ ions were added to ensure system neutralization. The electrostatic interactions were calculated using the Particle Mesh Ewald method and a cutoff of 1.2 nm⁵⁵. The same cutoff of 1.2 nm was used for the Van der Waals interactions. The non-bonded pair lists were updated every 10 fs. In what follows, the analysis is based on MD simulation of 100 ns at 310 K.

4.10. Protein extraction

Protein extracts containing SARS-CoV-2 Mpro activity were obtained from Vero cell monolayers at 25 cm² flasks that were infected for 1h with an MOI of 0.1 at 37 °C and 5% CO₂. After 1 or 2 days of infection, the supernatant was harvested and monolayers were washed 3 times with sterile cold PBS (pH 7.2). Next, cells were suspended into 1 mL of lysis buffer (100 mM Tris-HCl (pH 8.0), 150 mM NaCl, 10% glycerol and 0.6% Triton X-100) and kept at 4 °C. The soluble protein fraction was isolated as the supernatant after centrifugation (100,000 x g, 30 min, 4 °C) and stored at -20°C until further use. The protein concentrations of the samples were determined using the BCA protein assay kit.

4.11. Zymographic assays

Proteinases were assayed after electrophoresis on 10% SDS-PAGE with 0.1% copolymerized gelatin⁵⁶. Briefly, the gels were loaded per slot with 12 µg of soluble proteins dissolved in Laemmli's buffer, and following electrophoresis at a constant voltage of 200 V at 4°C, they were soaked for 1 h at 25 °C in washing buffer (0.1 mM sodium acetate buffer (pH 5.5) containing 2.5% TX-100). Proteinase activity was detected by incubating (16 h at 37 °C) the gels in reaction buffer (0.1 mM sodium acetate buffer pH 5.5 containing 1.0 mM DTT), in the presence and absence of same concentration of 10 µM of E-64, ATV, RTV or the ATV/RTV combination. Hydrolysis of gelatin was visualized by staining the gels with amido black 0.2%⁵⁷.

4.12. Statistical analysis

The assays were performed blinded by one professional, codified and then read by another professional. All experiments were carried out at least three independent times, including a minimum of two technical replicates in each assay. The dose-response curves used to calculate EC₅₀ and CC₅₀ values were generated by variable slope plot from Prism GraphPad software 8.0. The equations to fit the best curve were generated based on R² values ≥ 0.9 . Student's T-test was used to access statistically significant *P* values <0.05 . The statistical analyses specific to each software program used in the bioinformatics analysis are described above.

Author contributions

Experimental execution and analysis – NFR, CQS, CRL, FSS, ACF, MM, ARM, CSF, VCS, SSGD, MM, AM

Data analysis, manuscript preparation and revision – NFR, CQS, ACF, CSF, CRL, FSS, CRA, FAB, MMS, PTB, TMLS

Conceptualized the experiments – NFR, CQS, TMLS

Study coordination – TMLS

Manuscript preparation and revision – PTB, TMLS

Acknowledgments

Thanks are due to Dr. Carmen Beatriz Wagner Giacoia Gripp for assessments related to BSL3 facility. This work was supported by Conselho Nacional de Desenvolvimento Científico e Tecnológico (CNPq), Fundação de Amparo à Pesquisa do Estado do Rio de Janeiro (FAPERJ). This study was financed in part by the Coordenação de Aperfeiçoamento de Pessoal de Nível Superior - Brasil (CAPES) - Finance Code 001. Funding was also provided by CNPq, CAPES and FAPERJ through the National Institutes of Science and Technology Program (INCT) to Carlos Morel (INCT-IDPN). Thanks are due to Oswaldo Cruz Foundation/FIOCRUZ under the auspicious of Inova program. The funding sponsors had no role in the design of the study; in the collection, analyses, or interpretation of data; in the writing of the manuscript, and in the decision to publish the results.

The authors declare no competing financial interests.

References

1. Masters, P. S. The molecular biology of coronaviruses. *Adv. Virus Res.* **66**, 193–292 (2006).
2. Cui, J., Li, F. & Shi, Z.-L. Origin and evolution of pathogenic coronaviruses. *Nat. Rev. Microbiol.* **17**, 181–192 (2019).
3. Lam, T. T.-Y. *et al.* Identifying SARS-CoV-2 related coronaviruses in Malayan pangolins. *Nature* (2020) doi:10.1038/s41586-020-2169-0.
4. WHO | Middle East respiratory syndrome coronavirus (MERS-CoV). *WHO* <http://www.who.int/emergencies/mers-cov/en/> (2020).
5. WHO | Severe Acute Respiratory Syndrome (SARS). *WHO* <https://www.who.int/csr/sars/en/> (2020).
6. Dong, E., Du, H. & Gardner, L. An interactive web-based dashboard to track COVID-19 in real time. *Lancet Infect. Dis.* **0**, (2020).
7. Romer, P. & Garber, A. M. Opinion | Will Our Economy Die From Coronavirus? *The New York Times* (2020).
8. Harrison, C. Coronavirus puts drug repurposing on the fast track. *Nat. Biotechnol.* (2020) doi:10.1038/d41587-020-00003-1.
9. Organization, W. H. WHO R&D Blueprint: informal consultation on prioritization of candidate therapeutic agents for use in novel coronavirus 2019 infection, Geneva, Switzerland, 24 January 2020. (2020).
10. De Clercq, E. & Li, G. Approved Antiviral Drugs over the Past 50 Years. *Clin Microbiol Rev* **29**, 695–747 (2016).
11. Wu, C.-Y. *et al.* Small molecules targeting severe acute respiratory syndrome human coronavirus. *Proc. Natl. Acad. Sci. U. S. A.* **101**, 10012–10017 (2004).
12. Fehr, A. R. & Perlman, S. Coronaviruses: an overview of their replication and pathogenesis. *Methods Mol. Biol. Clifton NJ* **1282**, 1–23 (2015).
13. Gong, Y. *et al.* Pharmacokinetics and pharmacodynamics of cytochrome P450 inhibitors for HIV treatment. *Expert Opin. Drug Metab. Toxicol.* **15**, 417–427 (2019).
14. Cao, B. *et al.* A Trial of Lopinavir-Ritonavir in Adults Hospitalized with Severe Covid-19. *N. Engl. J. Med.* (2020) doi:10.1056/NEJMoa2001282.

15. Stanley, T. L. *et al.* Effects of Switching from Lopinavir/ritonavir to Atazanavir/ritonavir on Muscle Glucose Uptake and Visceral Fat in HIV Infected Patients. *AIDS Lond. Engl.* **23**, 1349–1357 (2009).
16. Gibert, C. L. Treatment Guidelines for the Use of Antiretroviral Agents in HIV-Infected Adults and Adolescents: An Update. *Fed. Pract.* **33**, 31S-36S (2016).
17. Dayer, M. R. Old Drugs for Newly Emerging Viral Disease, COVID-19: Bioinformatic Prospective. 16.
18. Gautam, N. *et al.* Preclinical pharmacokinetics and tissue distribution of long-acting nanoformulated antiretroviral therapy. *Antimicrob. Agents Chemother.* **57**, 3110–3120 (2013).
19. Song, S. *et al.* Protective Effect of Atazanavir Sulphate Against Pulmonary Fibrosis In Vivo and In Vitro. *Basic Clin. Pharmacol. Toxicol.* **122**, 199–207 (2018).
20. Wang, M. *et al.* Remdesivir and chloroquine effectively inhibit the recently emerged novel coronavirus (2019-nCoV) in vitro. *Cell Res.* **30**, 269–271 (2020).
21. Gautret, P. *et al.* Hydroxychloroquine and azithromycin as a treatment of COVID-19: results of an open-label non-randomized clinical trial. *Int. J. Antimicrob. Agents* 105949 (2020) doi:10.1016/j.ijantimicag.2020.105949.
22. Zhou, F. *et al.* Clinical course and risk factors for mortality of adult inpatients with COVID-19 in Wuhan, China: a retrospective cohort study. *The Lancet* **395**, 1054–1062 (2020).
23. Newton, A. H., Cardani, A. & Braciale, T. J. The host immune response in respiratory virus infection: balancing virus clearance and immunopathology. *Semin. Immunopathol.* **38**, 471–482 (2016).
24. Solomon, T., Baylis, M. & Brown, D. Zika virus and neurological disease—approaches to the unknown. *Lancet Infect Dis* **16**, 402–4 (2016).
25. de Freitas, C. S. *et al.* Yellow fever virus is susceptible to sofosbuvir both in vitro and in vivo. *PLoS Negl Trop Dis* **13**, e0007072 (2019).
26. Ferreira, A. C. *et al.* Beyond members of the Flaviviridae family, sofosbuvir also inhibits chikungunya virus replication. *Antimicrob Agents Chemother* (2018) doi:10.1128/aac.01389-18.
27. Ferreira, A. C. *et al.* Sofosbuvir protects Zika virus-infected mice from mortality, preventing short- and long-term sequelae. *Sci. Rep.* **7**, 9409 (2017).
28. Sacramento, C. Q. *et al.* The clinically approved antiviral drug sofosbuvir inhibits Zika virus replication. *Sci Rep* **7**, 40920 (2017).

29. Figueiredo-Mello, C. *et al.* Efficacy of sofosbuvir as treatment for yellow fever: protocol for a randomised controlled trial in Brazil (SOFFA study). *BMJ Open* **9**, e027207 (2019).
30. UN health chief announces global ‘solidarity trial’ to jumpstart search for COVID-19 treatment. *UN News* <https://news.un.org/en/story/2020/03/1059722> (2020).
31. Jin, Y.-H. *et al.* A rapid advice guideline for the diagnosis and treatment of 2019 novel coronavirus (2019-nCoV) infected pneumonia (standard version). *Mil. Med. Res.* **7**, 4 (2020).
32. Sheahan, T. P. *et al.* Comparative therapeutic efficacy of remdesivir and combination lopinavir, ritonavir, and interferon beta against MERS-CoV. *Nat. Commun.* **11**, 1–14 (2020).
33. Lv, Z., Chu, Y. & Wang, Y. HIV protease inhibitors: a review of molecular selectivity and toxicity. *HIVAIDS Auckl. NZ* **7**, 95–104 (2015).
34. Huang, J. *et al.* UPLC-MS/MS quantification of nanoformulated ritonavir, indinavir, atazanavir, and efavirenz in mouse serum and tissues. *J. Chromatogr. B Analyt. Technol. Biomed. Life. Sci.* **879**, 2332–2338 (2011).
35. Beck, B. R., Shin, B., Choi, Y., Park, S. & Kang, K. Predicting commercially available antiviral drugs that may act on the novel coronavirus (2019-nCoV), Wuhan, China through a drug-target interaction deep learning model. *bioRxiv* 2020.01.31.929547 (2020) doi:10.1101/2020.01.31.929547.
36. Yang, H. *et al.* The crystal structures of severe acute respiratory syndrome virus main protease and its complex with an inhibitor. *Proc. Natl. Acad. Sci. U. S. A.* **100**, 13190–13195 (2003).
37. Macchiagodena, M., Pagliai, M. & Procacci, P. Inhibition of the Main Protease 3CL-pro of the Coronavirus Disease 19 via Structure-Based Ligand Design and Molecular Modeling. (2020).
38. Gao, R. *et al.* Cytokine and chemokine profiles in lung tissues from fatal cases of 2009 pandemic influenza A (H1N1): role of the host immune response in pathogenesis. *Am J Pathol* **183**, 1258–68 (2013).
39. Peschke, T., Bender, A., Nain, M. & Gerns, D. Role of macrophage cytokines in influenza A virus infections. *Immunobiology* **189**, 340–55 (1993).

40. Channappanavar, R. & Perlman, S. Pathogenic human coronavirus infections: causes and consequences of cytokine storm and immunopathology. *Semin. Immunopathol.* **39**, 529–539 (2017).
41. Monteerarat, Y. *et al.* Induction of TNF-alpha in human macrophages by avian and human influenza viruses. *Arch Virol* **155**, 1273–9 (2010).
42. Reed, H., L. J. ., & Muench. A simple method of estimating fifty percent endpoints. *Am J Hyg.* (1938).
43. CDC. Coronavirus Disease 2019 (COVID-19). *Centers for Disease Control and Prevention* <https://www.cdc.gov/coronavirus/2019-ncov/lab/rt-pcr-panel-primer-probes.html> (2020).
44. Jakalian, A., Jack, D. B. & Bayly, C. I. Fast, efficient generation of high-quality atomic charges. AM1-BCC model: II. Parameterization and validation. *J. Comput. Chem.* **23**, 1623–1641 (2002).
45. Wang, J., Wolf, R. M., Caldwell, J. W., Kollman, P. A. & Case, D. A. Development and testing of a general amber force field. *J. Comput. Chem.* **25**, 1157–1174 (2004).
46. Allen, W. J. *et al.* DOCK 6: Impact of new features and current docking performance. *J. Comput. Chem.* **36**, 1132–1156 (2015).
47. Jin, Z. *et al.* Structure-based drug design, virtual screening and high-throughput screening rapidly identify antiviral leads targeting COVID-19. *bioRxiv* 2020.02.26.964882 (2020) doi:10.1101/2020.02.26.964882.
48. Pettersen, E. F. *et al.* UCSF Chimera--a visualization system for exploratory research and analysis. *J. Comput. Chem.* **25**, 1605–1612 (2004).
49. Phillips, J. C. *et al.* Scalable molecular dynamics with NAMD. *J. Comput. Chem.* **26**, 1781–1802 (2005).
50. MacKerell, A. D., Banavali, N. & Foloppe, N. Development and current status of the CHARMM force field for nucleic acids. *Biopolymers* **56**, 257–265 (2000).
51. Zhang, T., Nguyen, P. H., Nasica-Labouze, J., Mu, Y. & Derreumaux, P. Folding Atomistic Proteins in Explicit Solvent Using Simulated Tempering. *J. Phys. Chem. B* **119**, 6941–6951 (2015).
52. Hoang Viet, M., Derreumaux, P. & Nguyen, P. H. Communication: Multiple atomistic force fields in a single enhanced sampling simulation. *J. Chem. Phys.* **143**, 021101 (2015).

53. Lindorff-Larsen, K., Piana, S., Dror, R. O. & Shaw, D. E. How fast-folding proteins fold. *Science* **334**, 517–520 (2011).
54. Jorgensen, W. L., Chandrasekhar, J., Madura, J. D., Impey, R. W. & Klein, M. L. Comparison of simple potential functions for simulating liquid water. (1998) doi:1.445869.
55. Darden, T., York, D. & Pedersen, L. Particle mesh Ewald: An N·log(N) method for Ewald sums in large systems. *J. Chem. Phys.* **98**, 10089–10092 (1993).
56. Heussen, C. & Dowdle, E. B. Electrophoretic analysis of plasminogen activators in polyacrylamide gels containing sodium dodecyl sulfate and copolymerized substrates. *Anal. Biochem.* **102**, 196–202 (1980).
57. Alves, C. R., Marzochi, M. C. & Giovanni-de-Simone, S. Heterogeneity of cysteine proteinases in *Leishmania braziliensis* and *Leishmania major*. *Braz. J. Med. Biol. Res. Rev. Bras. Pesqui. Medicas E Biol.* **26**, 167–171 (1993).

Legend for the Figures

Figure 1. The active site of SARS-CoV-2 Mpro in the absence and presence of the inhibitors. A representative structure of Mpro (PDB:6LU7) was color coded to show the electrostatic potential of residues in the active site for negative (blue) and positive (red) charges. Panel A, the cavities of ligand interaction designated S1*, S1 and S2 in the absence of inhibitors. Panel B, placement of LPV (cyan) docked in the S1* and S2 regions of the active site. Panel C, placement of ATV (orange) docked in the S1* and S1 regions of the active site.

Figure 2. Binding profile of antiretroviral drugs onto SARS-CoV-2 Mpro. Two-dimensional (2D) representations of the interactions of LPV (A) and ATV (B) in the Mpro active site based on a molecular docking analysis. Two hydrogen bonds are predicted between ATV and Mpro.

Figure 3. Final positions of ATV and LPV on Mpro at the end of a molecular dynamic simulation. Representative images of the molecular dynamics after 100 ns of simulation. LPV (A) and ATV (B) are positioned in the Mpro active site at the end of 100 ns simulation.

Figure 4. Position profile of ATV and LPV during molecular dynamics. Two-dimensional (2D) representation of the interactions of LPV (A) and ATV (B) in the Mpro active site at the end of 100 ns molecular dynamic simulation.

Figure 5. Inhibition of proteinase activity through an analysis of gelatinolytic activity. Vero cells were mock treated or infected with SARS-CoV-2 at an MOI of 0.1 for 48h before lysis and preparation of a cellular fraction. Fractions containing 12 µg of total protein separated by electrophoresis followed by cutting the gels into their individual lanes that were incubated in 10 mM sodium acetate buffer (pH 5.5) in the absence (Nil) or presence of 10 µM of E-64, ATV or RTV. Gelatinolytic bands indicative of enzymatic activity were revealed by negative staining with amide black solution. Molecular mass markers are indicated (kDa).

Figure 6. The antiviral activity of ATV and ATV/RTV against SARS-CoV-2. Vero (A and B) or A549 (C) cells were infected with SARS-CoV-2 at the MOI of 0.01 and exposed to indicated concentrations of the drugs. After 2 days, the viral replication in the culture supernatant was measured by TCID₅₀/mL (A) or RT-PCR (B and C). The data represent means ± SEM of three independent experiments.

Figure 7. ATV and ATV/RTV impairs SARS-CoV-2 replication, cell death and cytokine storm in human primary monocytes. Human primary monocytes were infected at the indicated MOI of 0.01 and treated with indicated concentration of the compounds. After 24h, virus replication (A) and LDH release (B) as well as the levels of IL-6 (C) and TNF-α (D) were measured in the culture supernatant. The data represent means ± SEM of experiments with cells from at least three healthy donors. Differences with $P < 0.05$ are indicated (*), when compared to untreated cells (nil).

Figure 1

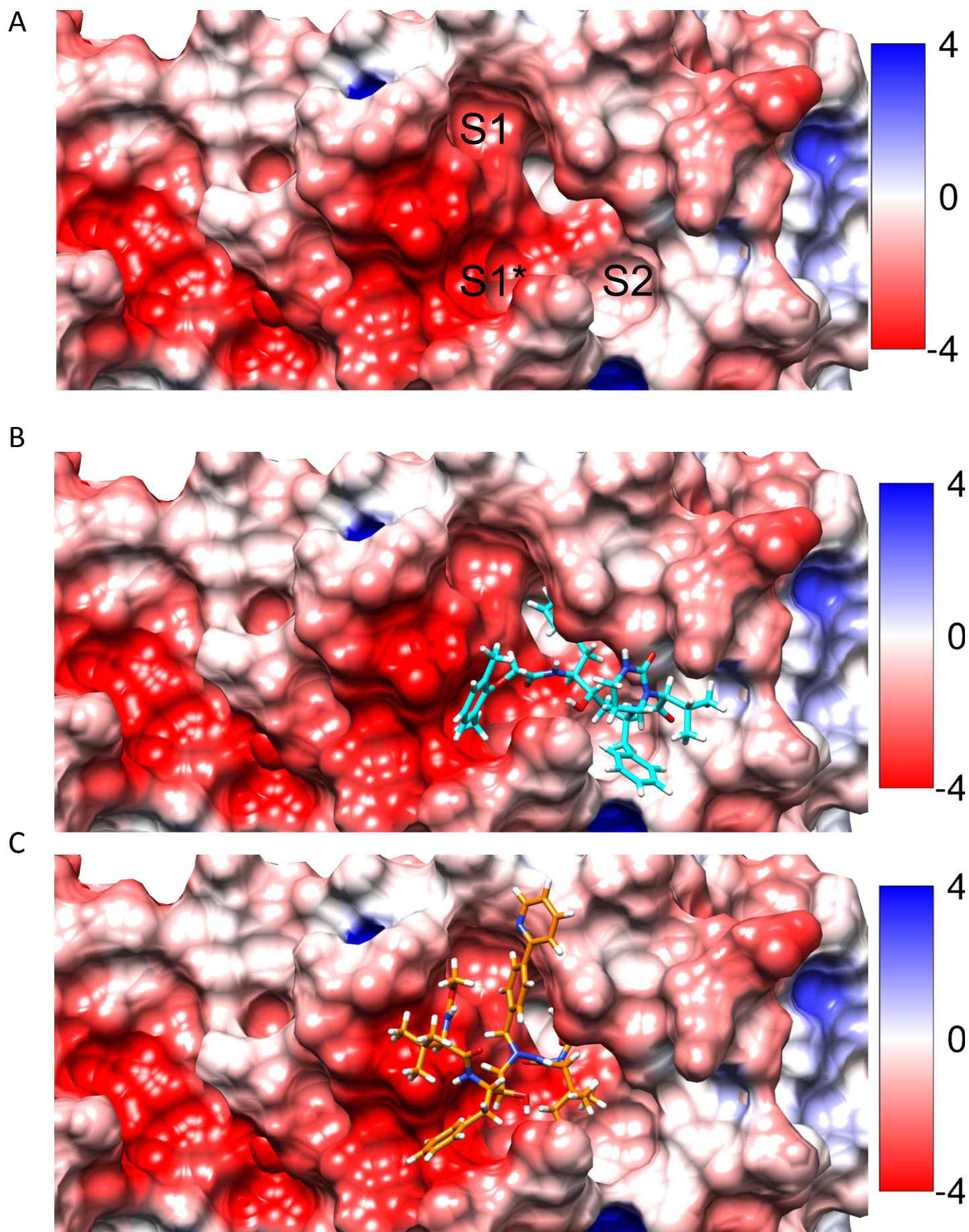


Figure 2

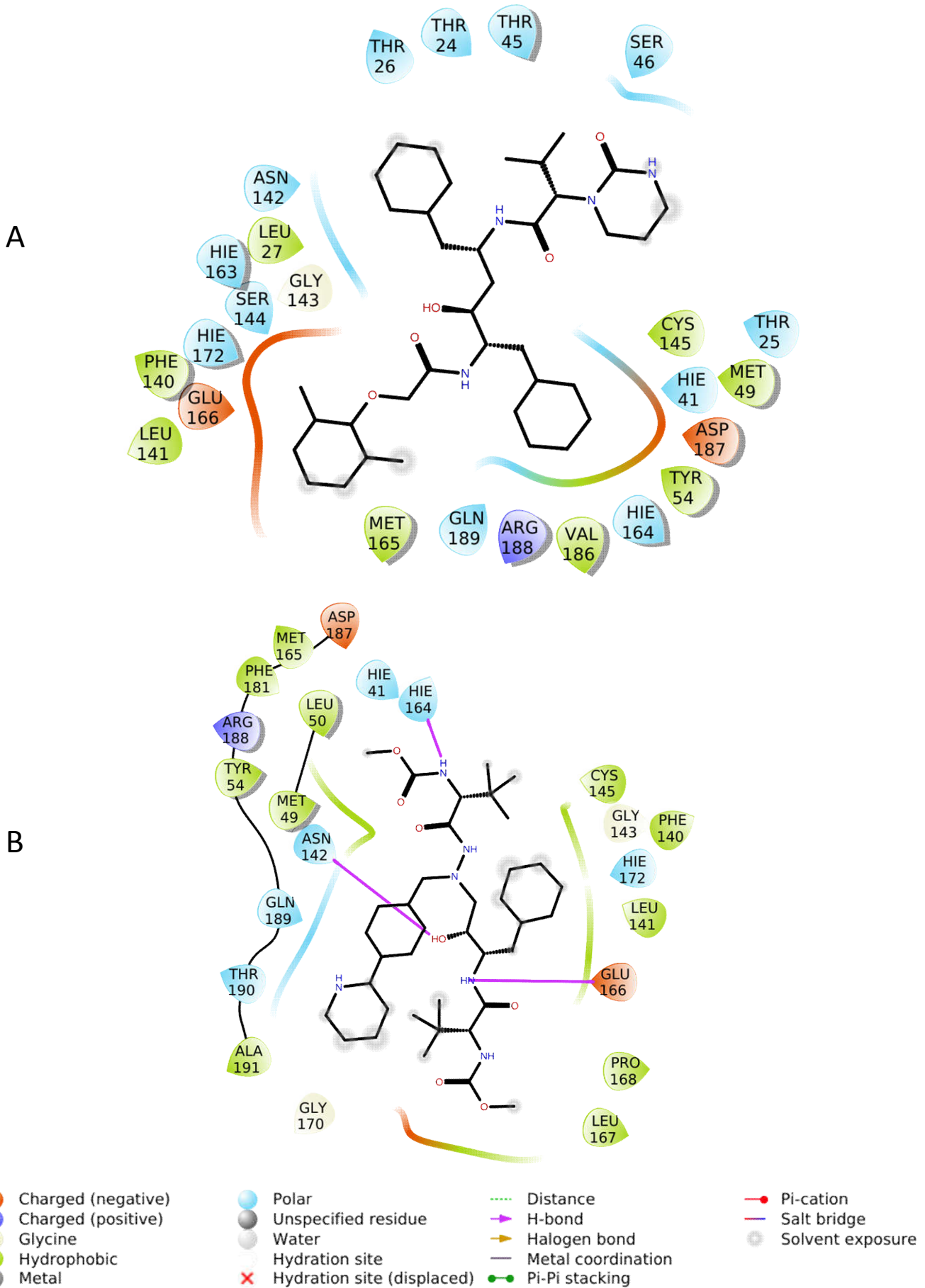
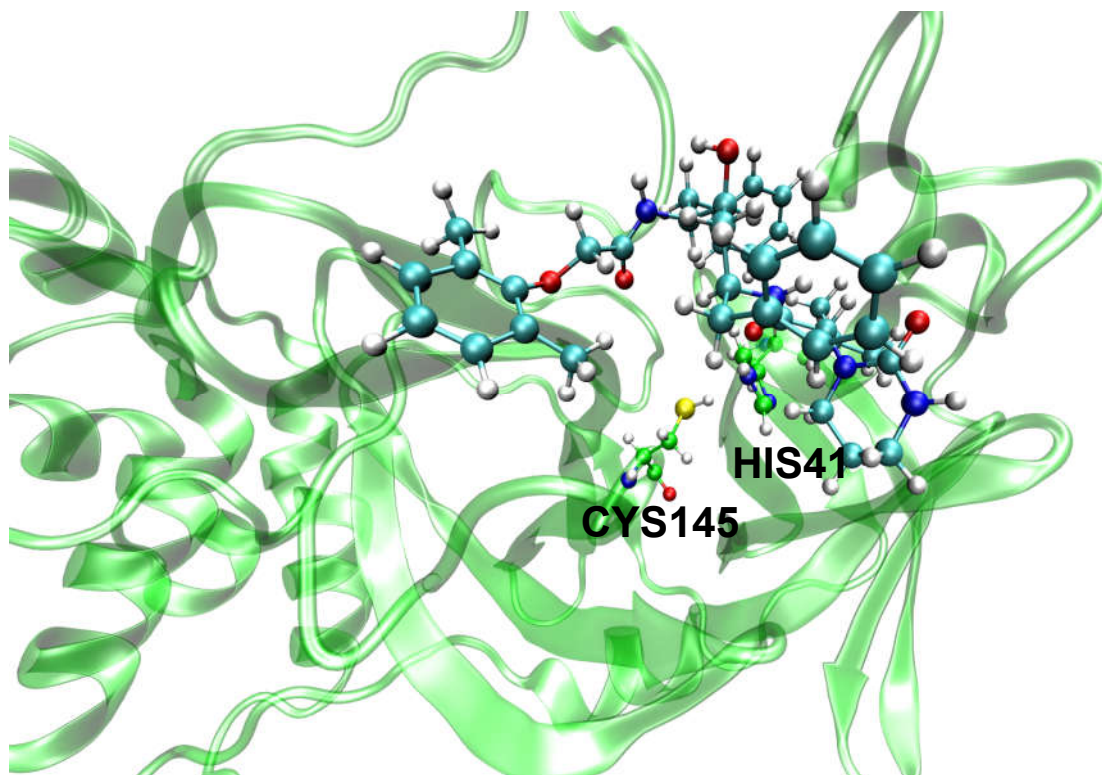


Figure 3

A



B

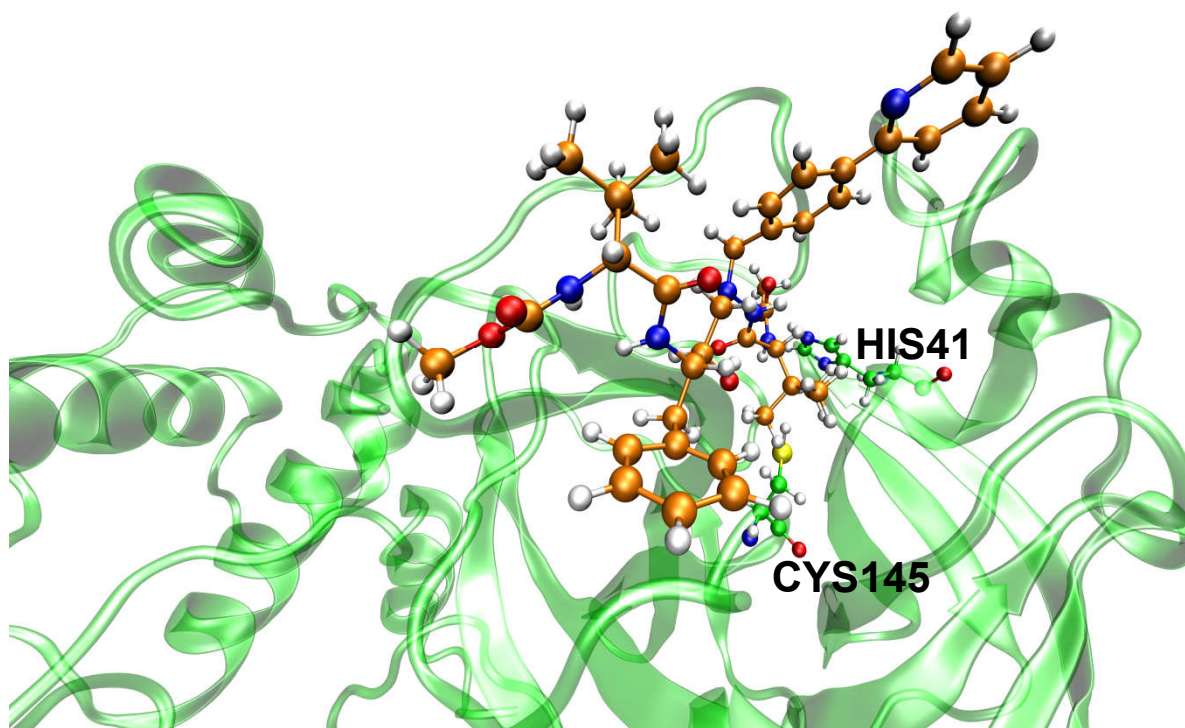
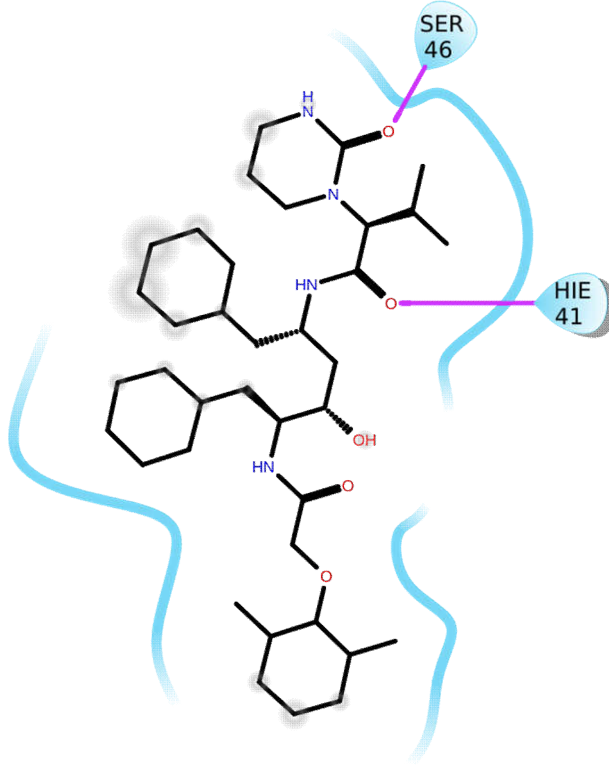
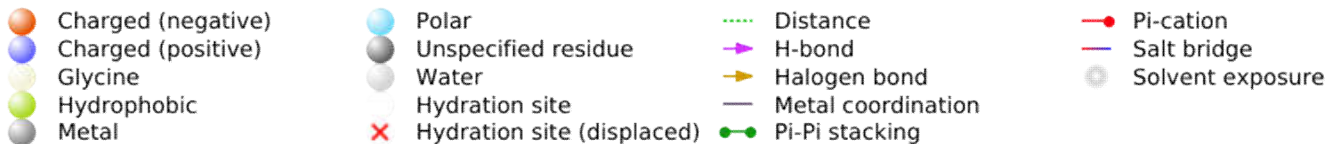
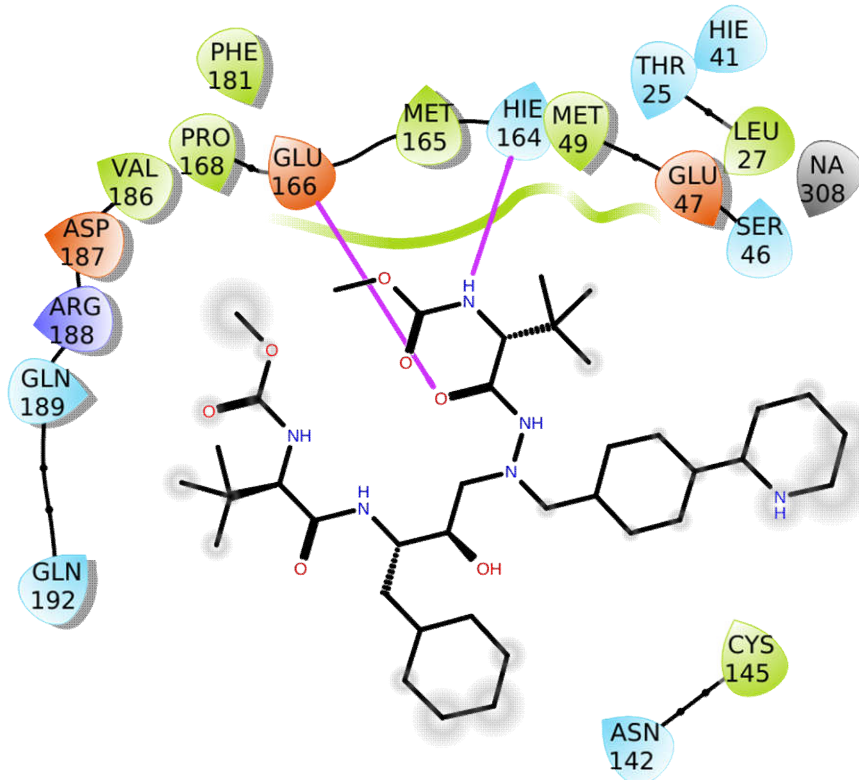


Figure 4

A)



B)



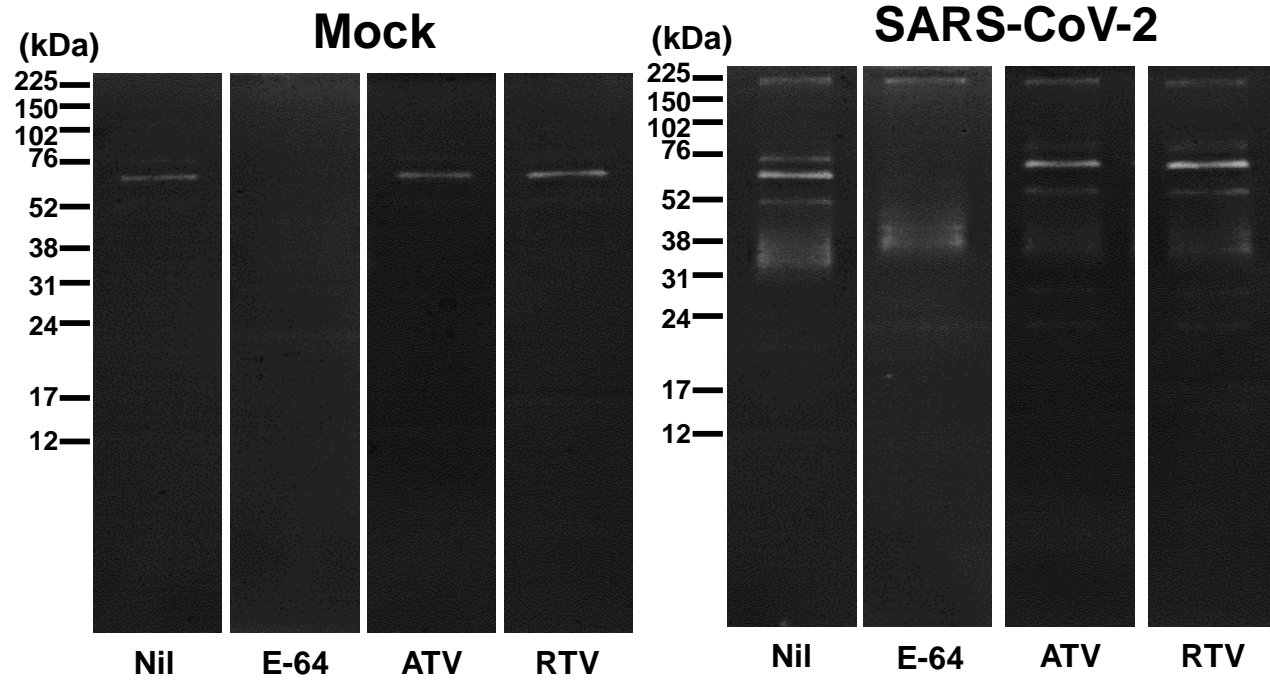


Figure 6

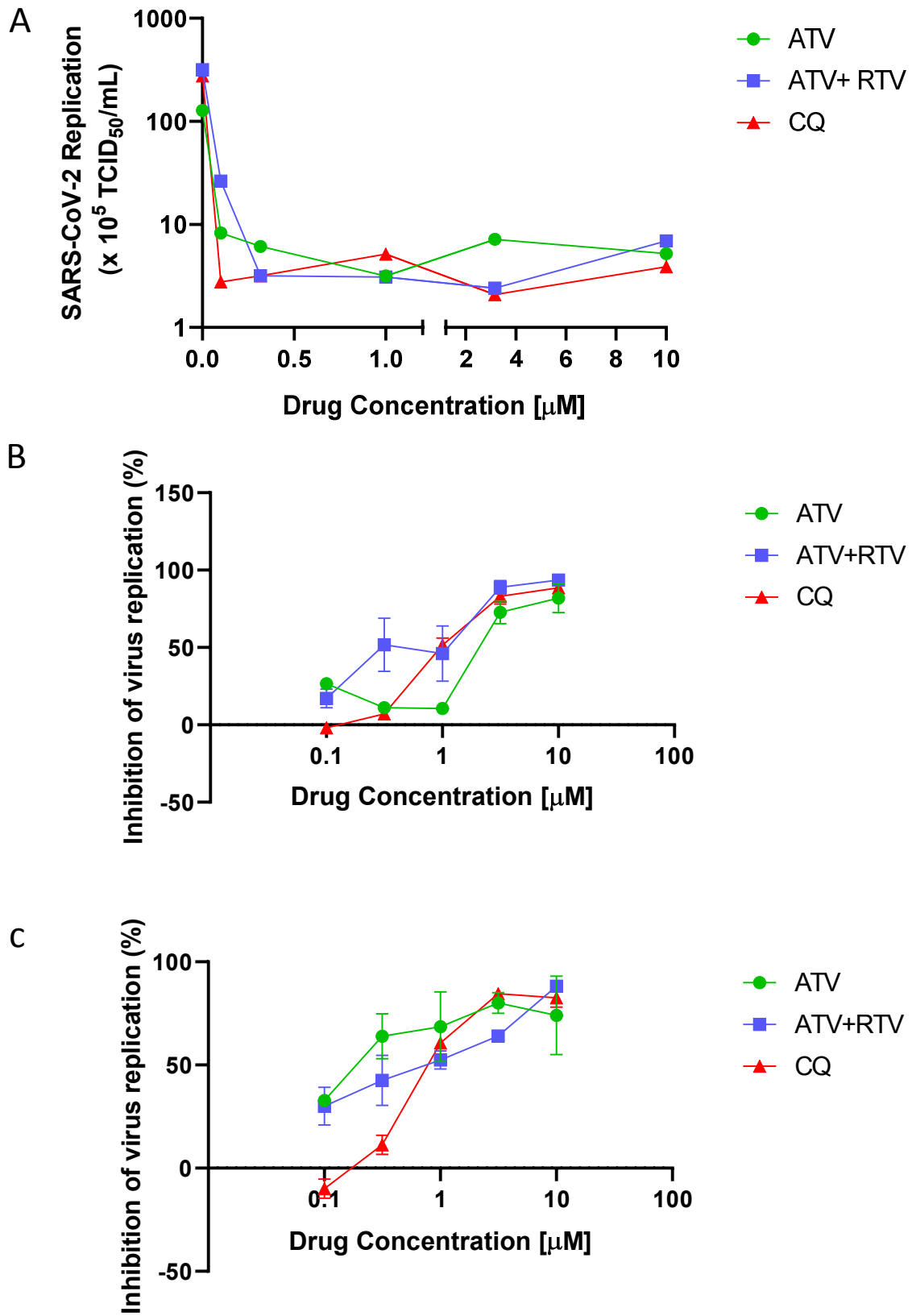


Figure 7

