

Interactions between malnutrition, soil-transmitted helminthiasis and poverty among children living in periurban communities in Maranhao State, Northeastern Brazil

Mayron Morais Almeida ^{1,2}, Kerla Joeline Lima Monteiro ², Polyanna Araújo Alves Bacelar ^{1,2}, Jéssica Pereira dos Santos ^{1,2}, Simone Patrícia Carneiro de Freitas ², Brenda Bulsara Costa Evangelista ², Daniella Nobre Leal ², Denilson de Araújo e Silva ², Aline Borges Cardoso ², Elaine Ferreira do Nascimento ^{2,4}, Antonio Henrique Almeida de Moraes Neto ³, Filipe Anibal Carvalho-Costa ^{1,2}

ABSTRACT

Poverty, malnutrition and neglected tropical diseases such as soil-transmitted helminthiasis (STHs) interact in a multi-causal feedback network. This study aimed to assess the relationships between STHs, income and nutritional status of children in impoverished communities in the city of Caxias, Maranhao State, Northeastern Brazil. A cross-sectional survey (n=259 children) was carried out with the collection of fecal samples and assessment of sociodemographic, anthropometric, dietary and sanitation data. Hookworm infection and ascariasis presented prevalence rates of 14.3% and 9.3%, respectively. The logistic regression analysis showed that hookworm infection was more frequent in males (odds ratio [OR]=3.43; 95% confidence interval [CI]=1.45-8.08), children aged 11-15 years old (OR=3.72; 95% CI=1.19-11.62), children living in poor families (OR=2.44; 95% CI=1.04-5.68) and those living in rented houses (OR=5.74; 95% CI=1.91-17.25). Concerning ascariasis, living in the Caldeiroes community (OR=0.01; 95% CI=0-0.17) and belonging to the 11-15 years age group (OR=0.21; 95% CI=0.04-1.02) were protection factors. Poor children have a significantly lower frequency of consumption of meat, milk, vegetables, tubers and fruits than not poor children. The frequent consumption of meat, milk and tubers was associated with significant higher values in the parameter height-for-age, whereas the consumption of meat and milk positively influenced the weight-for-age. The frequencies of stunting, underweight and wasting were 8.1%, 4.9% and 2.9%, respectively. The multivariate model demonstrated that stunting was significantly associated with economic poverty (OR=2.82; 95% CI=1.03-7.70) and low weight was associated with male sex (OR=6.43; 95% CI=1.35-30.68). In conclusion, the study describes the interactions between the dimensions of development represented by income, STHs and nutritional status revealing the importance of raising income levels to improve the living conditions of families in impoverished communities in Northeastern Brazil.

KEYWORDS: Malnutrition. Soil-transmitted helminthiasis. Poverty. Northeastern Brazil. Childhood infections.

INTRODUCTION

The United Nations defined seventeen Sustainable Development Goals (SDGs) to be achieved by 2030. Among the SDGs are the reduction by at least half the proportion of people living in poverty, ending all forms of malnutrition and ending epidemics

¹Fundação Oswaldo Cruz, Instituto Oswaldo Cruz, Laboratório de Epidemiologia e Sistemática Molecular, Rio de Janeiro, Rio de Janeiro, Brazil

²Escritório Técnico Regional Fiocruz Piauí, Teresina, Piauí, Brazil

³Fundação Oswaldo Cruz, Instituto Oswaldo Cruz, Laboratório de Inovações em Terapias, Ensino e Bioprodutos, Rio de Janeiro, Rio de Janeiro, Brazil

⁴Universidade Federal do Piauí, Coordenação do Programa de Pós-Graduação em Políticas Públicas, Teresina, Piauí, Brazil

Correspondence to: Filipe Anibal Carvalho-Costa
Fundação Oswaldo Cruz, Instituto Oswaldo Cruz, Laboratório de Epidemiologia e Sistemática Molecular, Av. Brasil, 4365, CEP 21040-360, Rio de Janeiro, RJ, Brazil

E-mail: carvalhocosta70@hotmail.com

Received: 24 June 2020

Accepted: 1 September 2020

of waterborne and neglected tropical diseases¹. These three goals interact in a multi-causal feedback network.

Soil-transmitted helminthiasis (STHs) are conditions with clear socio-environmental determinants, whose prevalence is high in scenarios of economic poverty and inadequate sanitation^{2,3}. The prevalence rates of STHs in Brazil have shown a downward trend, following the social development achieved by the country in the last decades⁴⁻⁶. STHs are caused by hookworms (*Necator americanus* and *Ancylostoma duodenale*), *Ascaris lumbricoides*, *Trichuris trichiura* and *Strongyloides stercoralis*. Depending on parasitic loads, hookworms are associated with varying degrees of iron deficiency anemia⁷, *A. lumbricoides* can cause intestinal obstruction, *T. trichiura* is associated with dysentery and rectal prolapse and *S. stercoralis* can cause severe intestinal infection, sometimes with systemic dissemination. While hookworm and *S. stercoralis* transmission is more frequently percutaneous, *A. lumbricoides* and *T. trichiura* are orally transmitted. This may be associated with different dynamics and risk factors, with hookworms and *S. stercoralis* being more associated with the inadequate destination of feces in the peridomestic environment and *A. lumbricoides* and *T. trichiura* more dependent on inadequate supply of clean water and consumption of clean food⁸. However, it should be considered that hookworms can also be transmitted orally and their transmission is influenced by the contamination of water and food.

The regular use of anthelmintics such as albendazole and mebendazole has been the main measure to control STHs, aiming to control parasitic loads and reduce transmission. In Brazil, this policy was made official with the National Campaign for Leprosy, Schistosomiasis, STHs and Trachoma⁹. A comprehensive national survey of STHs found prevalence rates of hookworm, ascariasis and tricuriasis of 4.5%, 8.3% and 5.9%, respectively, in the Northeast region. In Maranhao State, these rates were 15.8%, 17.5% and 5.8%, respectively, showing that STHs are still endemic in the State¹⁰.

The proportion of the population living in poverty in Brazil was reduced to 49% in 2000 and 34% in 2010. In 2020, the proportion was 56% in the Northeast, 53% in the North, 26% in the Midwest, 24% in the Southeast and 19% in the South¹¹. The poverty rate fell from 26.5% in 2017 to 25.3% in 2018, still higher than in 2012 when the pre-recession rate was 22.8%. In Brazil, the proportion of chronic malnutrition characterized by low height in boys and girls was reduced, respectively, from 29.3% and 26.7% in 1975 to 7.2% and 6.3% in 2009¹². The prevalence of weight deficit in boys and girls was reduced, respectively, from 5.7% and 5.4% to 4.3% and 3.9% in the same period¹².

Some studies have attempted to assess the impact of STHs on the nutritional status of children, showing conflicting results, since some point to the relative parasite-host balance and others suggest damage to physical and cognitive development¹³⁻¹⁶. The lack of control of confounding factors, such as income and differences in access to food, may explain these differences. The multiplicity of possibilities for interaction between income, diseases and nutritional status has been assessed through qualitative approaches¹⁷⁻¹⁹. This study aimed to assess the relationships between STHs, income and nutritional status of children in impoverished communities in the city of Caxias, Maranhao State, Northeastern Brazil.

MATERIALS AND METHODS

Description of the studied area

The study was carried out in the municipality of Caxias, Maranhao State, located in Northeastern Brazil (04°51'32"S and 43°21'21"W), with an area of 5,196.771 km² and 155,129 inhabitants. The municipality of Caxias is located in the Eastern region of Maranhao State, at an altitude of 66 meters. The climate is semi-humid tropical, with a minimum temperature of 22.4 °C, a maximum of 32.6 °C and an annual average of 26.8 °C. The climate of the municipality region, according to the Köppen classification, is tropical (AW') with a rainy period from January to June, with monthly averages greater than 216.6 mm and a dry period from July to December. The municipality of Caxias has a transition vegetation between the Mata de Cocais area, the pre-Amazon and the Cerrado. The municipality has a human development index (HDI) of 0.624, only 26.5% of houses have adequate sanitation and 2.8% of public roads are paved²⁰. About 76% of the population lives in the urban area, and the proportion of people living in poverty in the municipality is 58%. Livestock, plant extraction, permanent and temporary crops, government transfers and public employment are major sources of funds for the population. The study was carried out in the impoverished periurban communities Caldeiros and Bacuri, located on the outskirts of the municipality (Figure 1).

Study design, sample size and recruitment

A cross-sectional survey was carried out in the studied communities, which were visited by the researchers between December 2019 and January 2020. The researchers carried out home visits with the community health agents. The visits aimed to recruit participants, distribute plastic containers without preservatives for the collection of fecal samples and assess sociodemographic, anthropometric, dietary and

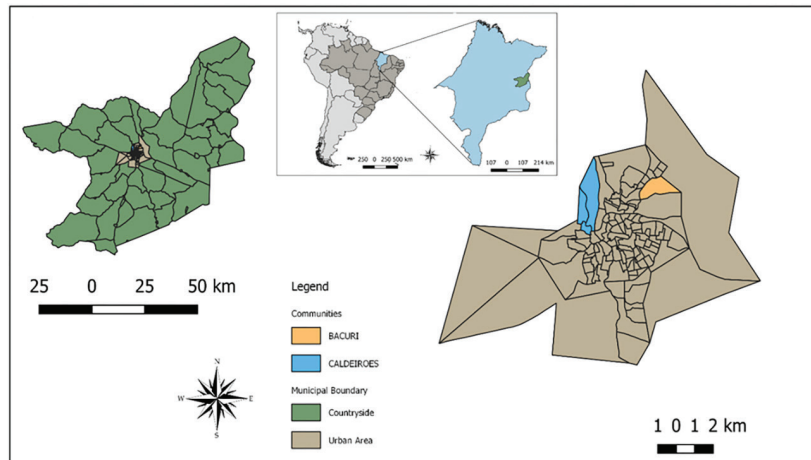


Figure 1 - Location map of the communities of Bacuri and Caldeiroes, in the municipality of Caxias, Maranhao State, Northeastern Brazil.

sanitation data through personal interviews; 139 families/houses (90 in Caldeiroes and 49 in Bacuri) were visited and fecal samples from 259 children were collected. The sample size was calculated taking into account a population of approximately 1000 children in the two communities, an expected frequency of 10% of intestinal parasites, an acceptable margin of error of 3% and a confidence level of 95%. The questionnaires were applied to each child, individually. Data were collected in two stages, the first in Caldeiroes and the second in Bacuri, with sociodemographic information and anthropometric measurements collected simultaneously in each community. All children in the defined age group, who lived in the communities of Bacuri and Caldeiroes were considered eligible for the study. Children with chronic clinical conditions that could influence the nutritional status were excluded.

Geospatial analysis of soil-transmitted helminthiasis

The households were georeferenced with a GPS at the time of the visits. The program QGIS was used (version 2.18.28, QGIS Development Team, QGIS Geographic Information System, Open Source Geospatial Foundation, Boston, MA, USA), raster module, heat map; 200 m and 100 m radius were used to analyze the spatial distribution of hookworms and *A. lumbricoides*, respectively.

Anthropometry

Weight and height were obtained in children aged 2 to 15 years²¹. Weight was measured using a digital floor scale. The standing height was measured with a tape perfectly aligned to a straight surface. The upper mid arm circumference was measured with a tape, as recommended²². With these values, the z-scores of the anthropometric

indicators height for age (HAZ), weight for age (WAZ) and weight for height (WHZ) were calculated, using the NutStat module of the Epi Info 2000 Version 3.5.2 program (Centers for Disease Control and Prevention, Atlanta, USA). Short stature for age, low weight for age and short stature for weight were defined by values equal to or less than -2 for HAZ, WAZ and WHZ, respectively. Severe stunting was defined by a value below -3 for HAZ²³. Although there is some variation in weight throughout the day, for logistical reasons the children's weights were obtained at different times, in the morning and in the afternoon.

Parasitological techniques

For all children whose caregivers agreed to participate in the research, a container without preservatives for collecting on the fecal sample was made available. The samples were sent to the Fiocruz Piaui laboratory. Samples were initially analyzed using the Lutz's technique followed by a flotation technique, the Willis-Mollay method. For the detection of *S. stercoralis*, the Rugai's method was used²⁴⁻²⁶. For all hookworm-positive samples, the Harada-Mori technique²⁷ was also performed in order to detect and differentiate larvae of *S. stercoralis* and the hookworms *N. americanus* and *A. duodenale*. The results of the exams were given to those responsible for the children and those who were infected, were treated with anti-helminthics (for STHs) and/or secnidazole (for pathogenic protozoa).

Qualitative assessment of food consumption

Those responsible for the children answered questions about the consumption patterns of different food groups. Responses on the consumption of meat, milk, eggs, cereals, tubers, legumes and processed foods were categorized as

occasional (when consumption was sporadic or less than 3 times a week) or regular (when consumption was equal to or greater than three times a week).

Assessment of family income

Those responsible for the children were asked about all sources of family income, adding the values and dividing them by the number of family members, to calculate the monthly family income per capita. Poverty was defined when this value was below R\$132, which corresponds to 26 USD (considering the exchange rate of 1 USD = R\$ 5). This is the value that defines the greatest vulnerability of families and is used by the Ministry of Social Development to include them in government programs to supplement income.

Statistical analysis

In order to assess factors associated with STHs, crude and adjusted (logistic regression model) odds ratios were calculated in the different subgroups defined by sociodemographic characteristics. Regarding the qualitative data on food consumption, the frequencies of regular consumption of distinct foods were compared between poor and not poor children using the Fisher's exact test. The means of anthropometric parameters HAZ, WAZ and WHZ were compared between children with regular or sporadic consumption of different types of food, using the Student's *t* test. Variables associated with the presence of stunting and low weight were assessed using bi- and multivariate models by logistic regression. The statistical significance was set at $p < 0.05$ for bi- and multivariate analyses.

Ethics

This study was approved by the Research Ethics Committee of the University Center for Science and Technology of Maranhão (UniFacema), license N° 16368319.0.0000.5248. Informed consents from all individuals were obtained. For children and adolescents <18 years old, the consent form was completed by the legal guardians. Children and adolescents also provided an assent form.

RESULTS

Prevalence, distribution and factors associated with soil-transmitted helminthiasis

In the studied communities, hookworm and *A. lumbricoides* infections were detected, with prevalence rates of 14.3% (37/259) and 9.3% (24/259), respectively.

The detection frequencies of *Enterobius vermicularis*, *Hymenolepis nana* and *T. trichiura* eggs were 5% ($n = 13$), 3.5% ($n = 9$) and zero, respectively. The prevalence of intestinal strongyloidiasis was 2.3% (5/222) as 37 fecal samples had insufficient volume to perform the Rugai's technique. The multivariate model by logistic regression demonstrated that the positivity rate for hookworms was significantly higher in males, children aged 11-15 years old, children living in poor families and in rented houses. Concerning ascariasis, living in the Caldeiros community and the 11-15 years age group were protection factors (Table 1). The maps in Figure 2 show the hot spots of hookworm and *A. lumbricoides* infections.

Income, access to different types of foods and nutritional status of studied children

Among the 259 children included in the study, 126 (48.6%) belonged to families with an income below R\$ 132 (26 USD), while 133 (51.4%) belonged to families with an income above this value. The proportion of children that belonged to families receiving a supplementary income from the government (Bolsa Familia Program) was 202/259 (78%). The proportion of children benefited by the Bolsa Familia Program was 103/126 (82%) in children classified as poor and 98/133 (74%) in not poor children. As shown in Table 2, poor children have a significantly lower frequency of consumption of meat, milk, vegetables, tubers and fruits than not poor children. However, the frequency of consumption of eggs, cereals, processed foods, sausages and pasta was not influenced by the income. The mean values of HAZ, WAZ and WHZ were -0.44 ± 1.10 , -0.45 ± 1.04 and -0.27 ± 1.18 , respectively. Frequent consumption of meat, milk and tubers was associated with significant higher values in the nutritional parameter HAZ, whereas meat and milk positively influenced WAZ, as shown in Table 3.

Interactions between malnutrition, income and soil-transmitted helminthiasis

The frequencies of stunting, underweight and wasting were 8.1% (21/259), 4.9% ($n = 11/259$) and 2.9% (5/173), respectively. As presented in Table 4, the multivariate model by logistic regression demonstrated that stunting was significantly associated with economic poverty and low weight with male sex.

DISCUSSION

The results of this study demonstrated the interplay between STHs, income and nutritional status in children

Table 1 - Distribution and factors associated with *Ascaris lumbricoides* and hookworm infections in 259 children in the municipality of Caxias, Maranhao State, Brazil, 2020.

	<i>Ascaris lumbricoides</i>					Hookworms				
	Positive/ tested (% positive)	Crude OR (95% CI)	p-value	Adjusted OR (95% CI)	p-value	Positive/ tested (% positive)	Crude OR (95% CI)	p-value	Adjusted OR (95% CI)	p-value
Community										
Caldeiroes	1/158 (0.6)	0.02 (0-0.16)		0.01 (0.001-0.17)	0.001	24/158 (15.2)	1.21 (0.58-2.50)	0.371	0.48 (0.18-1.28)	0.145
Bacuri	23/101 (22.8)	1	< 0.001	1		13/101 (12.9)	1		1	
Age group (years)										
0-5	9/78 (11.5)	1		1		6/78 (7.7)	1		1	
6-10	13/107 (12.1)	1.06 (0.42-2.62)	0.544	1.42 (0.48-4.23)	0.518	13/107 (12.1)	1.65 (0.60-4.57)	0.231	1.72 (0.58-5.05)	0.323
11-15	2/74 (2.7)	0.21 (0.04-1.02)	0.034	0.28 (0.05-1.63)	0.160	18/74 (24.3)	3.85 (1.43-10.35)	0.006	3.72 (1.19-11.62)	0.023
Sex										
Male	12/122 (9.8)	1.13 (0.49-2.63)	0.831	1.56 (0.56-4.33)	0.391	26/122 (21.3)	3.10 (1.46-6.58)	0.001	3.43 (1.45-8.08)	0.004
Female	12/137 (8.8)	1		1		11/137 (8)	1		1	
Poverty										
Yes	10/126 (7.9)	0.73 (0.31-1.71)	0.525	0.62 (0.21-1.86)	0.400	27/126 (21.4)	3.35 (1.54-7.26)	0.001	2.44 (1.04-5.68)	0.038
No	14/133 (10.5)	1		1		10/133 (7.5)	1		1	
Open evacuation										
Yes	12/90 (13.3)	2.01 (0.86-4.68)	0.116	21.18 (0.83-538.68)	0.064	17/90 (18.9)	1.73 (0.85-3.50)	0.088	0.92 (0.13-6.41)	0.935
No	12/169 (7.1)	1		1		20/169 (11.8)	1		1	
House status										
Own house	22/229 (9.6)	1		1		27/229 (11.8)	1		1	
Rented house	2/30 (6.7)	0.67 (0.14-3.01)	0.454	5.55 (0.50-61.58)	0.162	10/30 (33.3)	3.74 (1.58-8.82)	0.003	5.74 (1.91-17.25)	0.002
Presence of latrine										
Yes	13/174 (7.5)	1		1		21/174 (12.1)	0.67 (0.32-1.40)	0.195	0.78 (0.11-5.55)	0.807
No	11/83 (13.3)	1.89 (0.80-4.42)	0.105	18.35 (0.68-488.62)	0.082	14/83 (16.9)	1		1	
Albendazol in the last 6 months										
Yes	4/48 (8.3)	0.84 (0.27-2.58)	1.000	0.67 (0.17-2.59)	0.572	5/48 (10.4)	0.65 (0.23-1.77)	0.278	1.12 (0.36-3.53)	0.835
No	20/205 (9.8)	1		1		31/205 (15.1)	1		1	

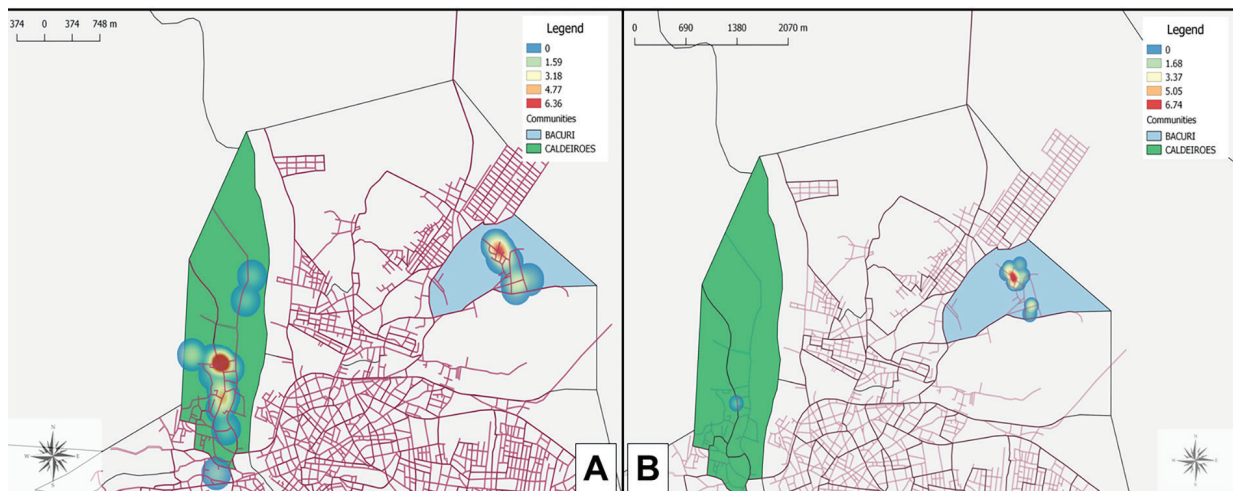


Figure 2 - Kernell maps showing the geospatial distribution and hot zones of hookworm infections (A) and *Ascaris lumbricoides* (B) in the communities of Bacuri and Caldeiroes, city of Caxias, Maranhao State.

Table 2 - Patterns of consumption of different foods according to the family income group in 259 children in the municipality of Caxias, Maranhao State, Brazil, 2020.

	Per capita monthly family income		p-value
	Poverty (n=126) Number of children with regular consumption (%)	Non-poverty (n=133) Number of children with regular consumption (%)	
Food			
Meat	59 (46.8)	110 (82.7)	< 0.001
Milk	66 (52.4)	96 (72.2)	< 0.001
Eggs	69 (54.8)	76 (57.1)	0.397
Cereals	122 (96.8)	131 (98.5)	0.316
Tubers	17 (13.5)	40 (30.1)	< 0.001
Legumes	35 (27.8)	61 (45.9)	0.002
Processed foods	24 (19)	26 (19.5)	0.522
Sausages	47 (37.3)	47 (35.5)	0.420
Fruits	50 (40)	81 (60)	< 0.001
Pasta	86 (68.3)	96 (72.2)	0.289

Table 3 - Comparison of means of anthropometric parameters in 259 children with different consumption patterns of different foods in the municipality of Caxias, Maranhao State, Brazil, 2020.

Food	HAZ (mean±SD)			WAZ (mean±SD)			WHZ (mean±SD)		
	Occasional consumption	Frequent consumption	p-value	Occasional consumption	Frequent consumption	p-value	Occasional consumption	Frequent consumption	p-value
Meat	-0.86±1.07	-0.22±1.04	<0.001	-0.72±1.01	-0.30±1.03	0.002	-0.36±1.12	-0.22±1.21	0.450
Milk	-0.66±1.13	-0.31±1.07	0.011	-0.62±0.34	-0.34±1.03	0.037	-0.39±1.13	-0.19±1.21	0.288
Eggs	-0.38±1.08	-0.71±1.13	0.455	-0.39±1.06	-0.49±1.03	0.435	-0.26±1.29	-0.27±1.09	0.954
Cereals	-0.13±1.54	-0.45±1.09	0.494	-0.79±1.02	-0.44±1.05	0.428	-0.81±1.17	-0.25±1.18	0.257
Tubers	-0.52±1.05	-0.15±1.23	0.025	-0.48±1.01	-0.34±1.15	0.377	-0.23±1.21	-0.41±1.08	0.420
Legumes	-0.43±1.07	-0.45±1.16	0.901	-0.50±0.97	-0.37±1.16	0.340	-0.44±0.98	0.02±1.43	0.011
Processed foods	-0.43±1.14	-0.50±0.95	0.667	-0.45±1.02	-0.43±1.14	0.866	-0.28±1.17	-0.24±1.22	0.857
Sausages	-0.40±1.04	-0.52±1.21	0.396	-0.45±0.95	-0.44±1.20	0.908	-0.33±1.08	-0.16±1.08	0.373
Fruits	-0.53±1.10	-0.36±1.11	0.214	-0.41±1.06	-0.49±1.03	0.556	-0.24±1.06	-0.29±1.28	0.786
Pasta	-0.53±1.02	-0.40±1.14	0.408	-0.55±0.99	-0.41±1.06	0.312	-0.29±1.13	-0.26±1.20	0.876

living in poor communities in Maranhao State, Brazil. Data showed that poverty is associated with a higher frequency of hookworm infection, a lower consumption of foods with higher protein content, such as meat and milk and higher frequency of chronic malnutrition characterized by stunting.

Regarding hookworm infections, the prevalence was significantly higher in children with lower income, living in rented houses. Hookworm was also more frequent in male adolescents, suggesting a greater exposure to contaminated soil in this group. These

associations were not observed for ascariasis, which, on the contrary, was more frequent among pre-school and school children. Infection with *A. lumbricoides* was more frequent in the Bacuri community, showing a more focal spatial pattern. For this study, we did not employ sensitive parasitological techniques for the microscopic identification of enteric protozoa. Failure to assess the correlation of *Giardia duodenalis* infection with poverty and nutritional status is therefore a limitation of this study, as this parasite is able to reduce the absorption of nutrients in the small intestine²⁸.

Table 4 - Factors associated with malnutrition in 259 children in the municipality of Caxias, Maranhao State, Brazil, 2020.

	Stunting					Low weight				
	Stunted/ evaluated (% positive)	Crude OR (95% CI)	p-value	Adjusted OR (95% CI)	p-value	Low weight/ evaluated (% positive)	Crude OR (95% CI)	p-value	Adjusted OR (95% CI)	p-value
Age group (years)										
0-5	7/78 (9)	1		1		1/78 (1.3)	1		1	
6-10	6/107 (5.6)	0.60 (0.19-1.86)	0.397	0.56 (0.18-1.80)	0.337	6/107 (5.6)	4.57 (0.53-38.78)	0.240	5.12 (0.58-44.57)	0.138
11-15	8/74 (10.8)	1.22 (0.42-3.57)	0.789	0.95 (0.30-2.97)	0.935	4/74 (5.4)	4.40 (0.48-40.31)	0.200	5.86 (0.61-55.85)	0.124
Sex										
Male	13/122 (10.7)	1		1		9/122 (7.4)	5.37 (1.13-25.39)	0.018	1	
Female	8/137 (5.8)	0.52 (0.20-1.30)	0.176	0.53 (0.20-1.38)	0.195	2/137 (1.5)	1		0.14 (0.03-0.69)	0.016
Hookworm infection										
Yes	4/37 (10.8)	1.46 (0.46-4.61)	0.354	0.96 (0.27-3.40)	0.956	0/37 (0)	undefined		undefined	-
No	17/222 (7.7)	1		1		11/211 (5)				
<i>Ascaris lumbricoides</i> infection										
Yes	1/24 (4.2)	0.46 (0.05-3.64)	0.397	0.52 (0.06-4.29)	0.549	1/24 (4.2)	0.97 (0.11-7.98)	0.664	1.31 (0.14-12.06)	0.810
No	20/235 (8.5)	1		1		10/225 (4.3)	1		1	
Poverty										
Yes	15/126 (11.9)	2.86 (1.07-7.62)	0.024	2.74 (1.00-7.53)	0.049	7/126 (5.6)	1.89 (0.54-6.49)	0.239	2.27 (0.62-8.32)	0.213
No	6/127 (4.5)	1		1		4/133 (3)	1		1	

According to the last STHs National Survey, Maranhao State reached the highest prevalence of hookworm in Brazil, which in the age group between 7 and 17 years reached a rate of 18.2% in boys and 13.3% in girls¹⁰. This rate is more than twice as high as that of Para State, the second State with the highest prevalence of hookworm infections¹⁰. It is important to note that some studied families still practice open defecation, which is a determining factor for the perpetuation of hookworm transmission^{29,30}. Regarding *A. lumbricoides* infection, Maranhão presents the second highest prevalence rate (19% in boys and 16% in girls), slightly below Amazonas State¹⁰. *S. stercoralis* infections were observed in the communities, which is a relevant fact, since the STHs national survey does not use, for operational reasons, Rugai or Baerman-Moraes techniques, so that the prevalence rates of strongyloidiasis are unknown in several areas. Moreover, it is noteworthy that *S. stercoralis* is not targeted by MDA campaigns, it is not sensitive to albendazole, being ivermectin and thiabendazole the most effective drugs for treatment.

Almost half of the studied population had an income below 26 USD per month. The assessment of differences in the consumption patterns of distinct foods in children with different income levels revealed that poor children consumed foods such as meat and milk less frequently. In addition, the lowest consumption frequencies of these foods were associated with lower values in the anthropometric parameters HAZ and WAZ. It has been demonstrated

that chronic malnutrition has distal determinants defined by political and economic backgrounds, and proximal determinants, such as low protein diet and infectious diseases³¹. As has been shown, low values in the height-age indicator are strongly determined by the characteristics of the diet, which in turn are influenced by the income³¹. The multicentric Malnutrition and Enteric Disease Study (MAL-ED) demonstrated the influence of the percentage of energy obtained from protein in the children's diet on the anthropometric parameter HAZ and consequently on the prevalence of stunting. In the present study, it was clear that income determines the frequency of eating protein foods such as meat and milk. The micro regional differences in the nutritional status of children in different income groups have been demonstrated in Gambia and Bangladesh^{32,33}. In Ghana and Nepal, increased dietary diversity has been able to increase the nutritional status of children in rural communities^{34,35}.

CONCLUSION

The study points to the importance of raising income levels to improve the living conditions of families in impoverished communities in Northeastern Brazil.

CONFLICT OF INTERESTS

The authors declare that there is no conflict of interests.

FINANCIAL SUPPORT

This study was supported by grants from *Fundação de Amparo à Pesquisa e ao Desenvolvimento Científico e Tecnológico do Maranhão* (FAPEMA: BM-01949/19), *Coordenação de Aperfeiçoamento de Pessoal de Nível Superior* (CAPES), and Instituto Oswaldo Cruz (FIOCRUZ).

REFERENCES

1. United Nations. Transforming our world: the 2030 agenda for sustainable development. [cited 2020 Sep 2]. Available from: <https://sustainabledevelopment.un.org/content/documents/21252030%20Agenda%20for%20Sustainable%20Development%20web.pdf>
2. Weatherhead JE, Hotez PJ, Mejia R. The global state of helminth control and elimination in children. *Pediatr Clin North Am*. 2017;64:867-77.
3. Lo NC, Addiss DG, Hotez PJ, King CH, Stothard JR, Evans DS, et al. A call to strengthen the global strategy against schistosomiasis and soil-transmitted helminthiasis: the time is now. *Lancet Infect Dis*. 2017;17:e64-9.
4. Martins-Melo FR, Ramos AN, Alencar CH, Lima MS, Heukelbach J. Epidemiology of soil-transmitted helminthiasis-related mortality in Brazil. *Parasitology*. 2017;144:669-79.
5. Chammartin F, Guimarães LH, Scholte RG, Bavia ME, Utzinger J, Vounatsou P. Spatio-temporal distribution of soil-transmitted helminth infections in Brazil. *Parasit Vectors*. 2014;7:440.
6. Casavechia MT, Lonardoni MV, Venazzi EA, Campanerut-Sá PA, Benália HR, Mattiello MF, et al. Prevalence and predictors associated with intestinal infections by protozoa and helminths in southern Brazil. *Parasitol Res*. 2016;115:2321-9.
7. Casmo V, Augusto G, Nala R, Sabonete A, Carvalho-Costa FA. The effect of hookworm infection and urinary schistosomiasis on blood hemoglobin concentration of schoolchildren living in northern Mozambique. *Rev Inst Med Trop Sao Paulo*. 2014;56:219-24.
8. Echazú A, Bonanno D, Juarez M, Cajal SP, Heredia V, Caropresi S, et al. Effect of poor access to water and sanitation as risk factors for soil-transmitted helminth infection: selectiveness by the infective route. *PLoS Negl Trop Dis*. 2015;30:e0004111.
9. Pan American Health Organization. Brazil: innovation in the fight against NIDs. [cited 2020 Sep 2]. Available from: https://www.paho.org/hq/index.php?option=com_content&view=article&id=15434:brasil-innovacion-en-la-lucha-contra-las-enfermedades-desatendidas&Itemid=72543&lang=en
10. Katz N, Coelho PM, coordenadores. Inquérito nacional de prevalência da esquistossomose mansoni e geo-helminthoses (INPEG): relatório final. Belo Horizonte: 2016. [cited 2020 Sep 2]. Available from: <http://www.saude.ba.gov.br/wp-content/uploads/2018/03/RELATÓRIO-FINAL-INQUÉRITO-PREVALÊNCIA-ESQUISTOSSOMOSE-2016.pdf>
11. Brasil. Instituto Brasileiro de Geografia e Estatística. Censo demográfico 2010: características da população e dos domicílios: resultados do universo. Rio de Janeiro: IBGE; 2011. [cited 2020 Sep 2]. Available from: https://biblioteca.ibge.gov.br/visualizacao/periodicos/93/cd_2010_caracteristicas_populacao_domicilios.pdf
12. Brasil. Instituto Brasileiro de Geografia e Estatística. Pesquisa de orçamentos familiares 2008-2009: antropometria e estado nutricional de crianças, adolescentes e adultos no Brasil. Rio de Janeiro: IBGE; 2010. [cited 2020 Sep 2]. Available from: <https://biblioteca.ibge.gov.br/visualizacao/livros/liv45419.pdf>
13. Owada K, Lau CL, Leonardo L, Clements AC, Yakob L, Nielsen M, et al. Spatial distribution and populations at risk of *A. lumbricoides* and *T. trichiura* co-infections and infection intensity classes: an ecological study. *Parasit Vectors*. 2018;11:535.
14. Molla E, Mamo H. Soil-transmitted helminth infections, anemia and undernutrition among schoolchildren in Yirgachefee, South Ethiopia. *BMC Res Notes*. 2018;11:585.
15. Blouin B, Casapia M, Joseph L, Gyorkos TW. A longitudinal cohort study of soil-transmitted helminth infections during the second year of life and associations with reduced long-term cognitive and verbal abilities. *PLoS Negl Trop Dis*. 2018;12:e0006688.
16. Moncayo AL, Lovato R, Cooper PJ. Soil-transmitted helminth infections and nutritional status in Ecuador: findings from a national survey and implications for control strategies. *BMJ Open*. 2018;8:e021319.
17. Mogre V, Yakubu A, Fuseini M, Amalba A, Aguree S. Nurses' knowledge and attitudes regarding malnutrition in children and its management in Ghana. *Curationis*. 2017;40:1618.
18. Oduor FO, Boedecker J, Kennedy G, Mituki-Mungirira D, Termote C. Caregivers' nutritional knowledge and attitudes mediate seasonal shifts in children's diets. *Matern Child Nutr*. 2019;15:e12633.
19. Kajjura RB, Veldman FJ, Kassier SM. Effect of nutrition education on knowledge, complementary feeding, and hygiene practices of mothers with moderate acutely malnourished children in Uganda. *Food Nutr Bull*. 2019;40:221-30.
20. Brasil. Instituto Brasileiro de Geografia e Estatística. Censo demográfico 2010: características gerais da população, religião e pessoas com deficiência. Rio de Janeiro: IBGE; 2012. [cited 2020 Sep 2]. Available from: https://biblioteca.ibge.gov.br/visualizacao/periodicos/94/cd_2010_religiao_deficiencia.pdf
21. Monteiro KJ, Reis ER, Nunes BC, Jaeger LH, Calegar DA, Santos JP, et al. Focal persistence of soil-transmitted helminthiasis in impoverished areas in the State of Piauí, Northeastern Brazil. *Rev Inst Med Trop Sao Paulo*. 2018;60:e24.

22. Brasil. Ministério da Saúde. Secretaria de Atenção à Saúde. Departamento de Atenção Básica. Orientações para a coleta e análise de dados antropométricos em serviços de saúde. Brasília: Ministério da Saúde; 2011. [cited 2020 Sep 2]. Available from: http://bvsm.s.saude.gov.br/bvs/publicacoes/orientacoes_coleta_analise_dados_antropometricos.pdf
23. Carvalho-Costa FA, Gonçalves AQ, Lassance SL, Silva Neto LM, Salmazo CA, Bóia MN. Giardia lamblia and other intestinal parasitic infections and their relationships with nutritional status in children in Brazilian Amazon. *Rev Inst Med Trop Sao. Paulo.* 2007;49:147-53.
24. Lutz A. O Schistosomum mansoni e a schistosomatose segundo observações, feitas no Brazil. *Mem Instituto Oswaldo Cruz.* 1919;11:121-55.
25. Willis HH. A simple levitation method for the detection of hookworm ova. *Med J Australia.* 1921;2:375-6.
26. Rugain E, Mattos T, Brisola AP. Nova técnica para isolar larvas de nematídeos das fezes - modificação do método de Baermann. *Rev Instituto Adolfo Lutz.* 1954;14:5-8.
27. Harada Y, Mori O. A new method for culturing hookworm. *Yonago Acta Med.* 1955;1:177-9.
28. Coronato-Nunes B, Calegar DA, Monteiro KJ, Hubert-Jaeger L, Reis ER, Xavier SC, et al. Giardia intestinalis infection associated with malnutrition in children living in northeastern Brazil. *J Infect Dev Ctries.* 2017;11:563-70.
29. Black RE, Victora CG, Walker SP, Bhutta ZA, Christian P, de Onis M, et al. Maternal and child undernutrition and overweight in low-income and middle-income countries. *Lancet.* 2013;382:427-51.
30. Hürlimann E, Silué KD, Zouzou F, Ouattara M, Schmidlin T, Yapi RB, et al. Effect of an integrated intervention package of preventive chemotherapy, community-led total sanitation and health education on the prevalence of helminth and intestinal protozoa infections in Côte d'Ivoire. *Parasit Vectors.* 2018;11:115.
31. Strunz EC, Addiss DG, Stocks ME, Ogden S, Utzinger J, Freeman MC. Water, sanitation, hygiene, and soil-transmitted helminth infection: a systematic review and meta-analysis. *PLoS Med.* 2014;11:e1001620.
32. Hussein M, Darboe MK, Moore SE, Nabwera HM, Prentice AM. Thresholds of socio-economic and environmental conditions necessary to escape from childhood malnutrition: a natural experiment in rural Gambia. *BMC Med.* 2018;16:199.
33. Mohsena M, Mascie-Taylor CG, Goto R. Association between socio-economic status and childhood undernutrition in Bangladesh; a comparison of possession score and poverty index. *Public Health Nutr.* 2010;13:1498-504.
34. Marquis GS, Colecraft EK, Kanlisi R, Aidam BA, Atuobi-Yeboah A, Pinto C, et al. An agriculture-nutrition intervention improved children's diet and growth in a randomized trial in Ghana. *Matern Child Nutr.* 2018;14 Suppl 3:e12677.
35. Sreeramareddy CT, Ramakrishnareddy N, Subramaniam M. Association between household food access insecurity and nutritional status indicators among children aged <5 years in Nepal: results from a national, cross-sectional household survey. *Public Health Nutr.* 2015;18:2906-14.
36. Lopes AF, Frota MT, Leone C, Szarfarc SC. Perfil nutricional de crianças no estado do Maranhão. *Rev Bras Epidemiol.* 2019;22:e190008.