

A NEW SPECIES OF *BOETTCHERISCA*  
ROHDENDORF, 1937 FROM FORMOSA (*Diptera*,  
*Sarcophagidae*) \*

STEPHEN H. KIRNER \*\*  
U.S. Naval Medical Research,  
San Francisco, Cal., U.S.A.

e

H. DE SOUZA LOPES  
Instituto Oswaldo Cruz,  
Rio de Janeiro, Brasil

(With 9 text-figures)

***Boettcherisca formosensis* sp. n.**

Differs from *B. septentrionalis* Rohdendorf, 1937 by the shape of the apical plate of the paraphallus and by the presence of strong spines on the apex of the *forcipes superiores*. The female of *B. septentrionalis* Rohd. has the first genital tergite entire (KANO, 1951), *B. formosensis* sp. n. presents two plates united dorsally, by a membrane, representing this sclerite.

*B. formosensis* sp. n. is generally larger and darker and appears to be less attracted to habitations than *B. peregrina* Desv., in Formosa.

Male: Length 10 to 13 mm.

Head yellowish silvery pollinose, sometimes silvery (small specimen). Front about 0,18 of width of head. Ocellar bristle little differentiated from surrounding hairs which are well developed. Parafacialia with small bristles in one row, near the eye. Parafrontalia with black pile. There are 11 to 13 frontal bristles reaching the level of the middle of the second antennal segment. Antenna gray, second segment blackish, about 0,3 as long as third, the latter reaching about 0,84 of the distance. Facialia with hairs on the lower third. Arista plumose on the basal three thirds. Back of head with two rows of black hairs in addition to the post-ocular cilia, remaining hairs white.

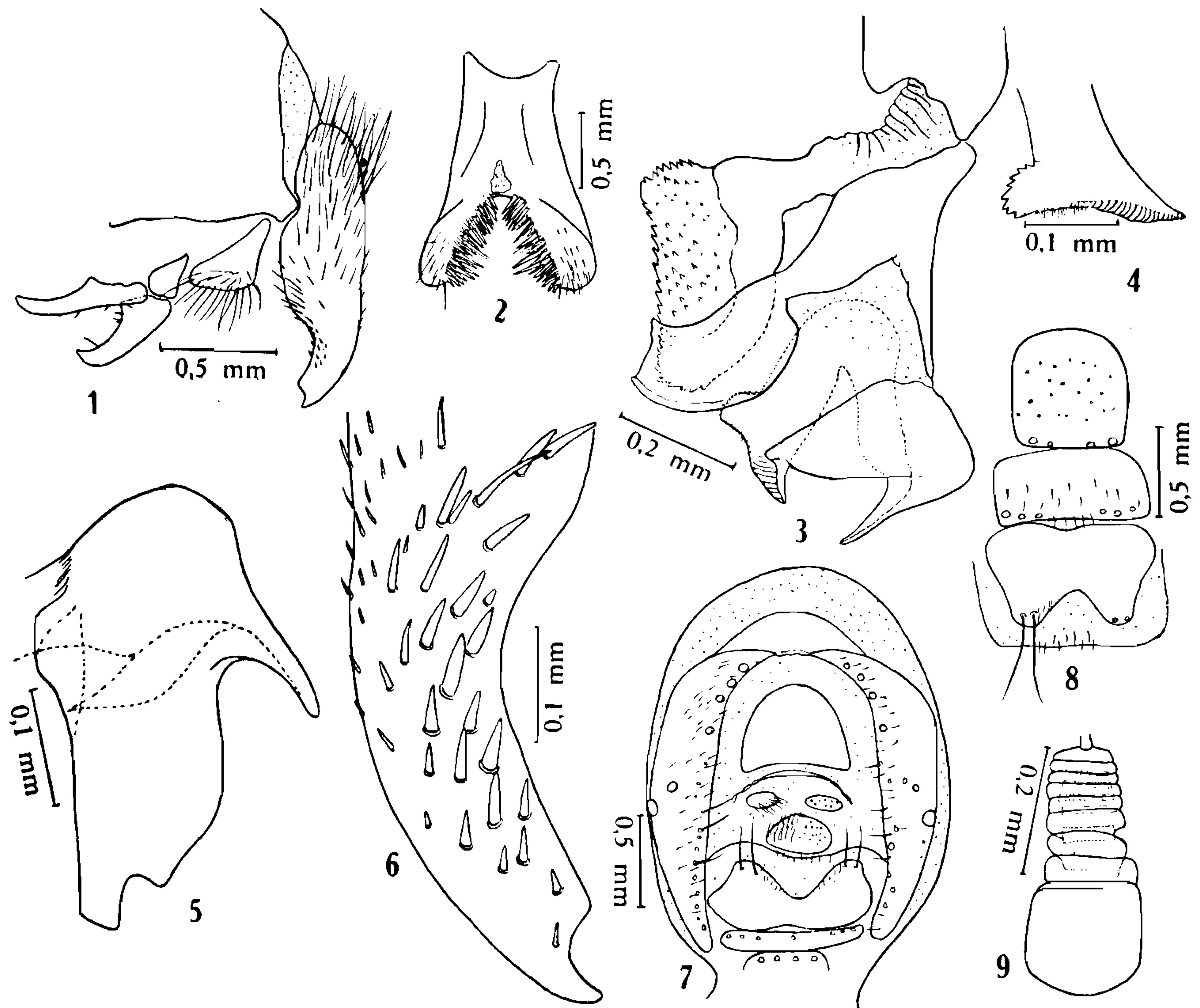
Thorax gray. Three supra-alar postsutural bristles and two presuturals; five postsutural dorsocentral bristles, only two posterior ones developed and five presutural; acrostichal bristles slightly differentiated, one strong prescutellar; scutellum with three pairs of marginal bristles, the anterior one small, apical and pre-apical bristles

---

\* Received for publication September 30, 1960.

\*\* Dead October 20, 1958.

well developed. Three sternopleural bristles at the same level. Hypopleural bristles seven to eleven. Propleura with black pile on the middle.



*Boettcherisca formosensis* sp. n. — Fig. 1: Male genitalia; fig. 2: fifth sternite of male; fig. 3: apical segment of penis; fig. 4: apex of glans; fig. 5: apical plate of *paraphallus*; fig. 6: apex of *forcipes superiores*; fig. 7: female genitalia; fig. 8: female genital sternites; fig. 9: spermatheca.

Abdomen gray, a pair of median marginal bristles on the fourth tergite. Sternites I to IV with black hairs which are more dense on the second sternite, fifth sternite with black spines (fig. 2). Genital segments black, second reddish on the sides, sometimes entirely reddish black, with long delicate hairs. *Forcipes superiores* black with curved apex where are some strong spines; *f. inferiores* almost triangular, yellowish; *f. interiores* and *palpi genitalium* reddish black. Penis bearing *ventralia* similar to those of *B. septentrionalis* Rohd. but with apical plate only poorly chitinized, the basal lobe large, not linear.

Legs black; hind femur with two series of strong bristles on the anterior side. Mid-tibia with one long preapical ventral bristle; hind tibia with a preapical ventral bristle in addition to three or four small

ones. Segments of costal vein as follows: II:50, III:35, IV:66, V:26, VI:6. Costal spine not differentiated.

Female: Length 12 mm.

Front about 0,3 of width of head. Ocellar bristles well developed. Second antennal segment 0,35 as long as third, the latter reaching about 0,85 of distance to vibrissae. Parafacialia about 0,4 of distance between vibrissae. Apical scutellar bristles absent. Tergite 6 plus 7 represented by two plates with a membrane between them. There is the usual trapezoidal well chitinized plate between the posterior margins of the first genital tergite. Genital sternites as in *B. peregrina* Desvoidy. Spermatheca with strongly annulated proximal part.

Holotype a male from 20 km Taipei-Taokian Road, 500 ft., 19-VI-1958; allotype a female, paratypes two males from Chang Chun Brdg, Tatun Shan, 1200 ft., 2-VII-1958, Formosa, all collected by S. H. Kirner (Col. I.O.C. 8517, 8567).

#### REFERENCES

- KANO, R., 1951, Notes on the flies of medical importance in Japan (part IV). Flies of Hachigo area. *Jap. J. Exp. Med.*, 21: 223-227, 11 figs.
- LOPES, H. S., 1937, *Insects of Micronesia* 13 (2). Diptera Sarcophagidae: 15-49, 14 figs.
- ROHDENDORF, B. B., 1937, *Faune de l'URSS*. Insectes Diptères, 19 (1): 1-500, 535 figs.